

Product datasheet for **RG208477**

HEATR2 (DNAAF5) (NM_017802) Human Tagged ORF Clone

Product data:

Product Type:	Expression Plasmids
Product Name:	HEATR2 (DNAAF5) (NM_017802) Human Tagged ORF Clone
Tag:	TurboGFP
Symbol:	HEATR2
Synonyms:	CILD18; HEATR2
Mammalian Cell Selection:	Neomycin
Vector:	pCMV6-AC-GFP (PS100010)
E. coli Selection:	Ampicillin (100 ug/mL)



[View online »](#)

ORF Nucleotide Sequence:

>RG208477 representing NM_017802
 Red=Cloning site Blue=ORF Green=Tags(s)

TTTTGTAATACGACTCACTATAGGGCGGCCGGAATTCGTCGACTGGATCCGGTACCGAGGAGATCTGCC
 GCC**CGGATCGCC**

ATGGCGCGCTGGGGGTGGCGGAGGCCGTGGCGGCCACACCCGGCTGAGGGGGCCGAGACGGCTGAGG
 CGGTGGAGCTGAGCCGCGCCCTGAGCCGCTGCTGCCGGGGTGGAGGCCGACAGCAAGCCGGGCCGGCG
 GCGCGCCTTGGAGGCCCTGCGGCGCGCTGGAGGAGCCAGGCCCTGCCGCCACCCACCGCTTCCAG
 GGCCCTGGGCGCGCTACTGCTGCCGCGCTTGTGCGCTGCCTGAGCGACCCCGCCGAGGGCTGCCGCG
 CGCTGGCAGTGCACCTGCTGGATCTGGGCTGCGCCGCGCGCGGCCACGCGATGCCCTGCCGCGCT
 GCTGCCCGCTCGCCGCGCTGGCCGGCCACGTGCCCGCGCGCCCGCCGAGGCCCTGTGAGGAG
 CTGCGCTGGCGCTTGTGACGCTGCTGGGCTGGCCGTGGACCTGTGCGGCGCGCGCTCGCCGCCACC
 TGGACGACGCTCTGCGCGCGCTGCGCTGCTCCCTGCTCGACCCCTCGCCGCGTGGCCCGGAGAGCTG
 CAGCTGCGCCCGCCCTGGCGCAGGCCACGCCAGACACTTCCACATGCAGTCGGAGTCTCTGATCGGG
 CCCTGATGCAGACCATCTCCACACGACTGGAAGTCCGTGTGGCCGCCATTGAAGCCACAGGCGCAG
 TGATCCATTTTGGCAACGGGAAGTCCGTGGACGACGTGCTTCCATTTTGTCTACGCGACTGTTTATGA
 CGTCCCGCAGGTCCGGCGGGCGGTGGCCTCCGTGGTGGGCGGCTGGCTGCTGTGTCTGCGTGACCGTTAC
 TCCTTCTTCCACAAGCTCATCCCTCTGCTGCTCAGTAGCCTCAACGACGAGGTGCCTGAGGTGAGGCAGC
 TGGCTGCCAGCCTCTGGGAGGACGTTGGCTGCACTGGCAGAAGGAGAATGAGGAGGACCTGAAGGACAA
 GCTGGACTTTGCCCTCCACCCACCCATTACCCTCCACATGAGCGCCGCCCTGTGCTGGGCTGCCGG
 GAGCTCGTCTTCCAGAACCTCTCAAGATCCTCCCTGCCCTGTGCCACGACATCACCGCCGAGGAGTGG
 GGACCCGAGTGAAGTCGGCACAGCTGCTCCAGTGTCTGCTGCTGATGCCGAGGACCACGCCAGCGCA
 CCTGGAGGTCTCCTCCGACCCCTGTCCAGGCCCTGCACCGACGAGGAGGACGCGTGGTCCAAAGTTGT
 ACCAGATCTGCAGAGCTCGTCCGGACGTTTGTACGCCCTGAGGTGTTTCTGAAGCTGATCTTATCGACGC
 TGAAGAAGACGCCCTCTGCCTCCGGCCTCATGGTGTGGCTCCGCCATGCGGGGTTGCCCCGAGAAGC
 CCTCCAGCCGACCTGGCAGCCATCGCCACAGAGCTGGCACAGGCCACATCTGCCAGGCATCTGAAAAC
 GACCTCTACCTGGAGCGCTGCTGCTGTGTGTGCAGGCTCTGGTGTCTGTGTGCATGAGGACTGTGGCG
 TGGCCAGCCTGCAGCTCTGGACGTGCTGCTGACAATAGTGGCCCTCGCAGGTGCTACCGGCTGAGGGA
 CAAGGCACAGGAGACGATGGACTACTGGCCATGGTGGAGGGTGTGAGCAGCTGCCAGGACCTCTACCGC
 AAGCACATTGGTCCCCTCCTGGAGCGGGTGACCGCTCGCACCTTACTGGACCGCACACTCGCCGGAGC
 TCCTGCAGTTCAGTGTCATCGTGCACAGTCAGGCCCTGCCCTGGGAGAAGCCCTGCCACAGCTCGTGCC
 CACGCTGAGGGCCTGTCTGCAGCCCTCCAAGACCCGAGATGCGCCTGAAGCTGTTCTCCATCCTGTCC
 ACCGTGCTGCTCAGAGCCACGGACACCATAACTCCCAGGGGAGTTTCCAGCTACCTCGAGACGGTGA
 CAAAGGACATCTGGCCCCAATCTGCAGTGGCATGCGGGGAGGACAGCCGCGGCCATCCGACGGCTGC
 CGTGTCTGCCTCTGGGCGCTCACACGAGCGAGGTCTGTGCGCAGAGCAGATACGGGACGTGCAGGAA
 AACTGATGCCCCAGGTCTGACCACCTGGAGGAGGATTCGAAGATGACGCGACTGATCTCATGCCGTA
 TTATCAACACGTTCTTAAAAACCTCGGGCGCATGACGGATCCAGAGAACTCATCAGGATTTATCCTGA
 ACTCTTAAAACGCTAGATGACGTGTCCAACGATGTGAGGATGGCAGCCGCTCCACCTTGGTCACTGG
 CTGCAGTGTGCAAGGGTGCCAACGCAAAATCCTACTATCAGAGCAGTGTCCAGTACCTGTACCGAGAGT
 TGCTGTTTACCTTACGATCCAGAGAGGGCCATCCAGGATGCAATTTTAGAGGTCTCAAAGAGGGCAG
 CGGGCTGTTCCAGATCTCCTGGTGGGAGGACGGAGGCCGTATCCACAAGCACCGCTCGGCCACCTAC
 TGCGAGCAGCTCTGCAGCATGTGCAGGCCGTGCCAGCCACACAG

ACGCGTACGCGGGCCGCTCGAG - GFP Tag - GTTTAA

Protein Sequence: >RG208477 representing NM_017802
 Red=Cloning site Green=Tags(s)

```

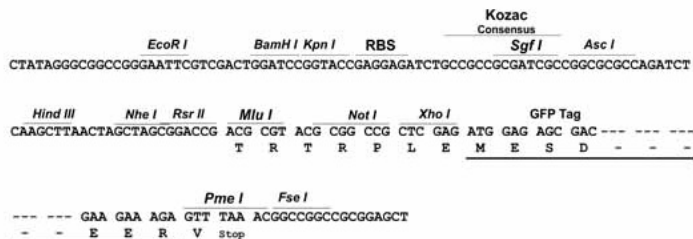
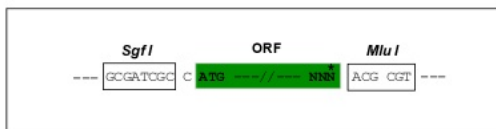
MAALGVAEAVAAPHPAEGAETA EAVELSRALSRLLPGLEADSKPGRRRALEALRRALEEPGPAADPTAFQ
GPWARLLLPRLLRCLSDPAEGCRALAVHLLDLGLRRAARPRDALPRLLPALAAARLAGHVPARRPPEACEE
LRLALVQLLGLAVDLCGAALAPHLDDALRALRCSLLDPFAAVRRESCSCAAALAQATPDHFHMQSESLIG
PLMQTISHQHWKVRVAAIEATGAVIHFGNGKSVDDVLSHFAQRLFDDVPQVRRAVASVVGWLLCLRDRY
SFFHKLIPLLLSSLNDEVPEVRQLAASLWEDVGLQWQKENEEDLKDKLDFAPPTPPHYPPHERRPVLGCR
ELVFRNLSKILPALCHDITDWVVGTRVKSQQLLPVLLLHAEDHATQHLEVVLRTLFQACTDEEAADVQSC
TRSAELVGTFSPEVFLKILSTLKKTPSASGLMVLASAMRGCPREALQPHLAAIATELAQAHCQASEN
DLYLERLLL CVQALVSVCHEDCGVASLQLLDVLLTIVALAGATGLRDKAQETMDSLAMVEGVSSCQDLYR
KHIGPLLERVTASHLDWTAHSPPELLQFSVIVAQSGPALGEALPHVVPTLRAQLQPSQDPQMRKLF S ILS
TVLLRATDTINSQGQFPSYLETVTKDILAPNLQWHAGRTAAAI RTAAVSCLWALT S SEVLSAEQIRDVQE
TLMPQVLT TLEEDSKMTRLISCR IINTFLKTSGGMTDPEKLIRIYPELLKRLDDVSNDVRMAAAS TLVTW
LQCVKGANAKSYYSVQYLYRELLVHLDDPERAIQDAILEVLKEGSGLFPDLLVRETEAVIHKHRSATY
CEQLLQHVQAVPATQ
  
```

TRTRPLE - GFP Tag - V

Restriction Sites: Sgfl-Mlul

Cloning Scheme:

Cloning sites used for ORF Shutting:

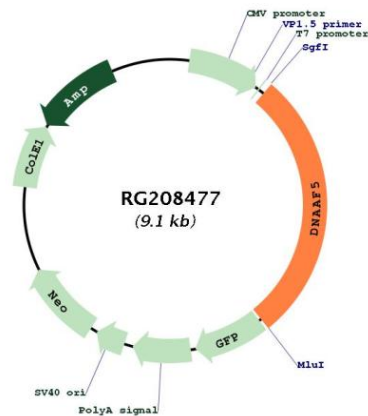

ACCN: NM_017802

ORF Size: 2565 bp

OTI Disclaimer: Due to the inherent nature of this plasmid, standard methods to replicate additional amounts of DNA in *E. coli* are highly likely to result in mutations and/or rearrangements. Therefore, OriGene does not guarantee the capability to replicate this plasmid DNA. Additional amounts of DNA can be purchased from OriGene with batch-specific, full-sequence verification at a reduced cost. Please contact our customer care team at custsupport@origene.com or by calling 301.340.3188 option 3 for pricing and delivery.

The molecular sequence of this clone aligns with the gene accession number as a point of reference only. However, individual transcript sequences of the same gene can differ through naturally occurring variations (e.g. polymorphisms), each with its own valid existence. This clone is substantially in agreement with the reference, but a complete review of all prevailing variants is recommended prior to use. [More info](#)

OTI Annotation:	This clone was engineered to express the complete ORF with an expression tag. Expression varies depending on the nature of the gene.
Components:	The ORF clone is ion-exchange column purified and shipped in a 2D barcoded Matrix tube containing 10ug of transfection-ready, dried plasmid DNA (reconstitute with 100 ul of water).
Reconstitution Method:	<ol style="list-style-type: none"> 1. Centrifuge at 5,000xg for 5min. 2. Carefully open the tube and add 100ul of sterile water to dissolve the DNA. 3. Close the tube and incubate for 10 minutes at room temperature. 4. Briefly vortex the tube and then do a quick spin (less than 5000xg) to concentrate the liquid at the bottom. 5. Store the suspended plasmid at -20°C. The DNA is stable for at least one year from date of shipping when stored at -20°C.
RefSeq:	<u>NM_017802.2, NP_060272.2</u>
RefSeq Size:	3507 bp
RefSeq ORF:	2568 bp
Locus ID:	54919
UniProt ID:	<u>Q86Y56</u>
Cytogenetics:	7p22.3
Gene Summary:	The protein encoded by this gene is essential for the preassembly or stability of axonemal dynein arms, and is found only in organisms with motile cilia and flagella. Mutations in this gene are associated with primary ciliary dyskinesia-18, a disorder characterized by abnormalities of motile cilia. Alternatively spliced transcript variants have been found for this gene. [provided by RefSeq, Feb 2013]

Product images:


Circular map for RG208477