

## Product datasheet for **RG208455**

### PTPLB (HACD2) (NM\_198402) Human Tagged ORF Clone

#### Product data:

Product Type:	Expression Plasmids
Product Name:	PTPLB (HACD2) (NM_198402) Human Tagged ORF Clone
Tag:	TurboGFP
Symbol:	PTPLB
Synonyms:	PTPLB
Mammalian Cell Selection:	Neomycin
Vector:	pCMV6-AC-GFP (PS100010)
E. coli Selection:	Ampicillin (100 ug/mL)
ORF Nucleotide Sequence:	>RG208455 representing NM_198402 Red=Cloning site Blue=ORF Green=Tags(s)

TTTTGTAATACGACTCACTATAGGGCGGCCGGAATTCGTCGACTGGATCCGGTACCGAGGAGATCTGCC  
GCC**CGATCGCC**

ATGGCGGCAGTGGCGGCGACTGCAGCAGCGAAGGGGAATGGGGCGGCGGTGGCAGGGCCGGGGCCGGGG  
ACGCCAGCGGCACGCGGAAGAAGAAGGGCCCGGGCCCTGGCCACGGCGTACCTGGTCATCTACAATGT  
GGTGATGACAGCCGGTGGCTGGTTATAGCGGTTGGTCTGGTCCGAGCATACCTGGCTAAGGGTAGCTAC  
CATAGCCTTTATTATTCAATTGAAAAGCCTTTGAAATTTCTTCAAACCTGGAGCCTTATTGGAGATTTTAC  
ATTGTGCTATAGGAATTGTTCCATCTTCTGTTGCTCCTGACTTCTTCCAGGTGATGTCAAGAGTTTTTCT  
AATATGGGCAGTAACACATAGCGTCAAAGAGGTACAGAGTGAAGACAGTGTCTCCTGTTTGTATTGCA  
TGGACGATCACGAAATCATCCGTTACTCCTTTTATACATTCACTATTAACCATCTGCCTTACCTCA  
TCAAATGGGCCAGGTACACACTTTTCAATTGTGCTGTACCCAATGGGAGTGTGAGGAGAACTGCTCACAAT  
ATATGCAGCTCTGCCCTTGTGACAGAAGCTGGCCTATATTCCATCAGTTTACCCAACAAATACAATTTCT  
TCTTTTGACTACTATGCATTCTGATTCTAATAATGATCTCTACATTCCAATTTTTCCCGATTAAT  
TCCACATGATACACCAGAGAAGAAGATCCTTTCTCATACTGAAGAACAACAAGAAATTTGAA

**ACGCGT**ACGCGGCCGCTCGAG - GFP Tag - GTTTAA



[View online »](#)

**Protein Sequence:** >RG208455 representing NM\_198402  
 Red=Cloning site Green=Tags(s)

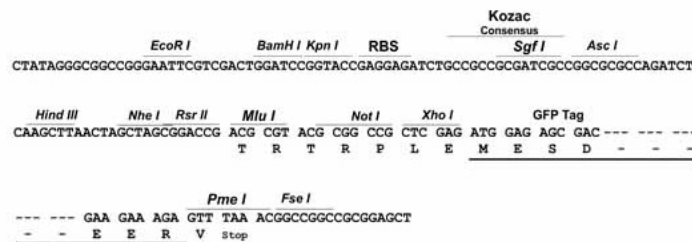
MAAVAATAAAKNGGGGGGRAGAGDASGTRKKKGPGLATAYLVIYNNVMTAGWLVIAGLVRAYLAKGSY  
 HSLYYISIEKPLKFFQTGALLEILHCAIGIVPSSVLTSTFQVMSRVFLIWAVTHSVKEVQSEDSVLLFVIA  
 WTITEIIRYSFYTFSLNLHLPYLKWARVTLFIVLYPMGVSGELLTIYAALPFVRQAGLYSISLPNKYNF  
 SFDYYAFLILIMISYIPIFPQLYFHMIHQRRKILSHTEEHKKFE

TRTRPLE - GFP Tag - V

**Restriction Sites:** SgfI-MluI

**Cloning Scheme:**

Cloning sites used for ORF Shutting:



**ACCN:** NM\_198402

**ORF Size:** 762 bp

**OTI Disclaimer:** The molecular sequence of this clone aligns with the gene accession number as a point of reference only. However, individual transcript sequences of the same gene can differ through naturally occurring variations (e.g. polymorphisms), each with its own valid existence. This clone is substantially in agreement with the reference, but a complete review of all prevailing variants is recommended prior to use. [More info](#)

**OTI Annotation:** This clone was engineered to express the complete ORF with an expression tag. Expression varies depending on the nature of the gene.

**Components:** The ORF clone is ion-exchange column purified and shipped in a 2D barcoded Matrix tube containing 10ug of transfection-ready, dried plasmid DNA (reconstitute with 100 ul of water).

**Reconstitution Method:**

1. Centrifuge at 5,000xg for 5min.
2. Carefully open the tube and add 100ul of sterile water to dissolve the DNA.
3. Close the tube and incubate for 10 minutes at room temperature.
4. Briefly vortex the tube and then do a quick spin (less than 5000xg) to concentrate the liquid at the bottom.
5. Store the suspended plasmid at -20°C. The DNA is stable for at least one year from date of shipping when stored at -20°C.

**RefSeq:** [NM\\_198402.5](#)

**RefSeq Size:** 4296 bp

**RefSeq ORF:** 765 bp

**Locus ID:** 201562

**UniProt ID:** [Q6Y1H2](#)

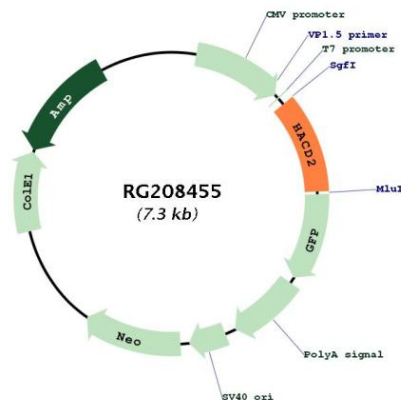
**Cytogenetics:** 3q21.1

**Protein Families:** Druggable Genome, Phosphatase, Transmembrane

**Protein Pathways:** Biosynthesis of unsaturated fatty acids

**Gene Summary:** The protein encoded by this gene can catalyze the third step (dehydration) in the conversion of long chain fatty acids to very long chain fatty acids. The encoded protein localizes to the endoplasmic reticulum membrane. [provided by RefSeq, Jul 2016]

## Product images:



Circular map for RG208455