

Product datasheet for **RG208424**

CBX7 (NM_175709) Human Tagged ORF Clone

Product data:

Product Type: Expression Plasmids
Product Name: CBX7 (NM_175709) Human Tagged ORF Clone
Tag: TurboGFP
Symbol: CBX7
Mammalian Cell Selection: Neomycin
Vector: pCMV6-AC-GFP (PS100010)
E. coli Selection: Ampicillin (100 ug/mL)
ORF Nucleotide Sequence: >RG208424 representing NM_175709
 Red=Cloning site Blue=ORF Green=Tags(s)

TTTTGTAATACGACTCACTATAGGGCGGCCGGAATTCGTCGACTGGATCCGGTACCGAGGAGATCTGCC
 GCC**CGATCGCC**

ATGGAGCTGTCAGCCATCGGCGAGCAGGTGTTCCCGTGGAGAGCATCCGGAAGAAGCGCGTGCGGAAGG
 GTAAGTGCAGTATCTGGTGAAGTGAAAGGATGGCCCCAAAGTACAGCACGTGGGAGCCAGAAGAGCA
 CATCTTGGACCCCGCCTCGTCATGGCCTACGAGGAGAAGGAGGAGAGACCGAGCATCGGGGTATAGG
 AAGAGAGGTCCGAAACCCAGGCGGCTTCTGTGCAGCGGCTGTACAGCATGGACCTGCGGAGCTCCACA
 AGGCCAAGGGCAAGGAGAAGCTCTGCTTCCCTGCCACTCGGCAGCGGGAGCCCTGAGGGGGT
 GGTC AAGCGGGGGCACCTGAGCTGGTGGACAAGGGCCCTTGGTGCCACCCTGCCCTTCCCGCTCCGC
 AAGCCCCGAAAGGCCACAAGTACCTGCGGCTCTCGCGCAAGAAGTTCCCGCCCCGCGGGCCCAACCTGG
 AGAGCCACAGCCATCGACGGGAGCTCTTCTGCAGGAGCCACCGCCCCAGACGTCTGCAGGCGGCTGG
 CGAGTGGGAGCCTGCTGCGCAGCCCCCTGAAGAGGAGGCAGATGCCGACCTGGCCGAGGGGCCCCCTCC
 TGGACACCTGCGCTCCCCTCAAGTGAGGTGACCGTGACCGACATCACCGCCAACTCCATCACCCTCACCT
 TCCGCGAGGCCAGCCAGCTGAGGGCTTCTCCGAGACCCAGTGGGAAGTTC

ACGCGTACGCGGCCGCTCGAG - GFP Tag - GTTTAA

Protein Sequence: >RG208424 representing NM_175709
 Red=Cloning site Green=Tags(s)

MELSAIQEVFAVESIRKKRVRKGVKVEYLVKWKGWPPKYSTWEPEEHILDPRLVMAEYEEKEERDRASGYR
 KRGPKRRLLLQRLYSMDLRSSHAKGKEKLCFSLTCPLGSGSPEGVVKAGAPELVKGPLVPTLPFPLR
 KPRKAHKYLRLSRKKFPPRGNLESHSHRRELFLQEPAPDVLQAAGEWEPAAQPPEEEADADLAEGPPP
 WTPALPSSEVTVDITANSITVTFREAQPAEGFFRDRSGKF

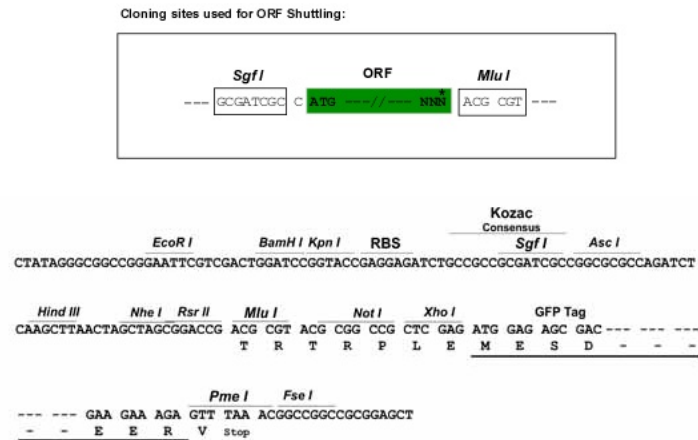
TRTRPLE - GFP Tag - V



[View online »](#)

Restriction Sites: SgfI-MluI

Cloning Scheme:



ACCN: NM_175709

ORF Size: 753 bp

OTI Disclaimer: The molecular sequence of this clone aligns with the gene accession number as a point of reference only. However, individual transcript sequences of the same gene can differ through naturally occurring variations (e.g. polymorphisms), each with its own valid existence. This clone is substantially in agreement with the reference, but a complete review of all prevailing variants is recommended prior to use. [More info](#)

OTI Annotation: This clone was engineered to express the complete ORF with an expression tag. Expression varies depending on the nature of the gene.

Components: The ORF clone is ion-exchange column purified and shipped in a 2D barcoded Matrix tube containing 10ug of transfection-ready, dried plasmid DNA (reconstitute with 100 ul of water).

Reconstitution Method:

1. Centrifuge at 5,000xg for 5min.
2. Carefully open the tube and add 100ul of sterile water to dissolve the DNA.
3. Close the tube and incubate for 10 minutes at room temperature.
4. Briefly vortex the tube and then do a quick spin (less than 5000xg) to concentrate the liquid at the bottom.
5. Store the suspended plasmid at -20°C. The DNA is stable for at least one year from date of shipping when stored at -20°C.

Note: Plasmids are not sterile. For experiments where strict sterility is required, filtration with 0.22um filter is required.

RefSeq: [NM_175709.2](#), [NP_783640.1](#)

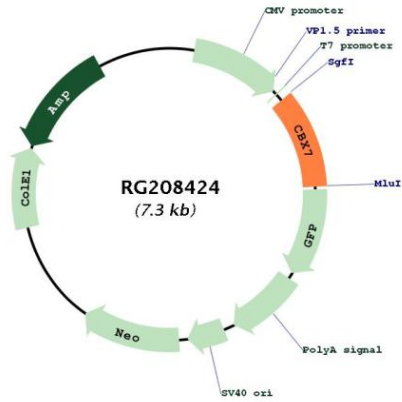
RefSeq Size: 3966 bp

RefSeq ORF: 756 bp

Locus ID: 23492
UniProt ID: [O95931](#)
Cytogenetics: 22q13.1
Gene Summary:

This gene encodes a protein that contains the CHROMO (CHRomatin Organization Modifier) domain. The encoded protein is a component of the Polycomb repressive complex 1 (PRC1), and is thought to control the lifespan of several normal human cells. [provided by RefSeq, Oct 2016]

Product images:



Circular map for RG208424