

Product datasheet for **RG208380**

SPCS3 (NM_021928) Human Tagged ORF Clone

Product data:

Product Type: Expression Plasmids
Product Name: SPCS3 (NM_021928) Human Tagged ORF Clone
Tag: TurboGFP
Symbol: SPCS3
Synonyms: PRO3567; SPC3; SPC22; SPC22/23; SPC23; YLR066W
Mammalian Cell Selection: Neomycin
Vector: pCMV6-AC-GFP (PS100010)
E. coli Selection: Ampicillin (100 ug/mL)
ORF Nucleotide Sequence: >RG208380 representing NM_021928
 Red=Cloning site Blue=ORF Green=Tags(s)

TTTTGTAATACGACTCACTATAGGGCGCCGGAATTCGTCGACTGGATCCGGTACCGAGGAGATCTGCC
 GCC**CGATCGCC**

ATGAACACGGTGTCTCGCGGGCAACTCACTGTTTCGCTTCTCGCTGAGCGTGATGGCGGCTCACCT
 TCGGCTGCTTCATCACCACCGCTTCAAAGACAGGAGCGTCCCGGTGCGGCTGCACGTCTCGGGATCAT
 GCTAAAAAATGTAGAAGATTTCACTGGACCTAGAGAAAGAAGTATCTGGGATTTATCACATTTGATATA
 ACTGCTGATCTAGAGAATATATTTGATTGGAATGTTAAGCAGTTGTTTCTTTATTTATCAGCAGAATATT
 CAACAAAAAATAATGCTCTGAACCAAGTTGTCCTATGGGACAAGATTGTTTTGAGAGGTGATAATCCGAA
 GCTGCTGCTGAAAGATATGAAAACAAAATATTTTTCTTTGACGATGGAAATGGTCTCAAGGAAACAGG
 AATGTCACCTTTGACCCTGTCTTGAAACGTCGTACCAAATGCTGGAATTCTACCTCTTGTGACAGGATCAG
 GACACGTATCTGTCCCATTTCCAGATACATATGAAATAACGAAGATTAT

ACGCGTACGCGGCCGCTCGAG - GFP Tag - GTTTAA

Protein Sequence: >RG208380 representing NM_021928
 Red=Cloning site Green=Tags(s)

MNTVLSRANSLFAFSLSVMAALTFGCFITTAFKDRSVPVRLHVSRIMLKNVEDFTGPRERSDLGFITFDI
 TADLENIFDWNVKQLFLYL SAEYSTKNNALNQVVLWDKIVLRGDNPKLLKDKMKTKYFFDDGNLKGNR
 NVTLTLSWNVVPNAGILPLVTGSGHVSVPFPDYEITKSY

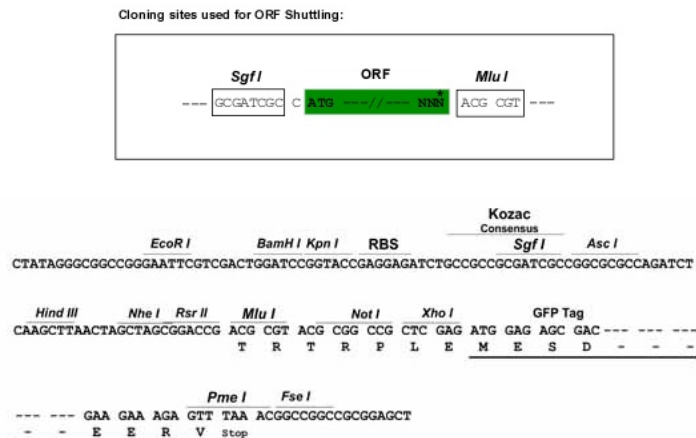
TRTRPLE - GFP Tag - V

Restriction Sites: SgfI-MluI



[View online »](#)

Cloning Scheme:



ACCN: NM_021928

ORF Size: 540 bp

OTI Disclaimer: The molecular sequence of this clone aligns with the gene accession number as a point of reference only. However, individual transcript sequences of the same gene can differ through naturally occurring variations (e.g. polymorphisms), each with its own valid existence. This clone is substantially in agreement with the reference, but a complete review of all prevailing variants is recommended prior to use. [More info](#)

OTI Annotation: This clone was engineered to express the complete ORF with an expression tag. Expression varies depending on the nature of the gene.

Components: The ORF clone is ion-exchange column purified and shipped in a 2D barcoded Matrix tube containing 10ug of transfection-ready, dried plasmid DNA (reconstitute with 100 ul of water).

Reconstitution Method:

1. Centrifuge at 5,000xg for 5min.
2. Carefully open the tube and add 100ul of sterile water to dissolve the DNA.
3. Close the tube and incubate for 10 minutes at room temperature.
4. Briefly vortex the tube and then do a quick spin (less than 5000xg) to concentrate the liquid at the bottom.
5. Store the suspended plasmid at -20°C. The DNA is stable for at least one year from date of shipping when stored at -20°C.

RefSeq: [NM_021928.4](#)

RefSeq Size: 1544 bp

RefSeq ORF: 543 bp

Locus ID: 60559

UniProt ID: [P61009](#)

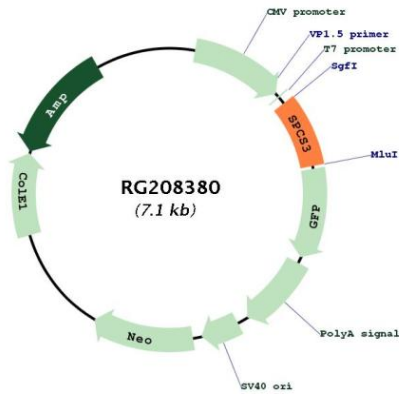
Cytogenetics: 4q34.2

Domains: SPC22

Protein Families: Protease, Transmembrane

Gene Summary: Component of the microsomal signal peptidase complex which removes signal peptides and other N-terminal peptides from nascent proteins as they are translocated into the lumen of the endoplasmic reticulum.[UniProtKB/Swiss-Prot Function]

Product images:



Circular map for RG208380