

Product datasheet for **RG208379**

KCNK12 (NM_022055) Human Tagged ORF Clone

Product data:

Product Type: Expression Plasmids
Product Name: KCNK12 (NM_022055) Human Tagged ORF Clone
Tag: TurboGFP
Symbol: KCNK12
Synonyms: K2p12.1; THIK-2; THIK2
Mammalian Cell Selection: Neomycin
Vector: pCMV6-AC-GFP (PS100010)
E. coli Selection: Ampicillin (100 ug/mL)
ORF Nucleotide Sequence: >RG208379 representing NM_022055
Red=Cloning site **Blue**=ORF **Green**=Tags(s)

TTTTGTAATACGACTCACTATAGGGCGCCGGGAATTCGTCGACTGGATCCGGTACCGAGGAGATCTGCC
GCC**CGATCGCC**

ATGTCCTCCCGCAGCCCCGGCCCCCGCCCGCCGTAGCCGCCGCCCTGCCGCGCCCCTCCTGCTGCT
GCTGCTGCTGCCCGCTTCGCACCTCAACGAGGACACCGCCGCTTCGTGCTGCTGGCGGCTCATCGG
CCTCTACCTGGTGGCGGGTGCACAGTCTTCTCGGCGCTCGAGAGCCCCGGCGAGCGGAGGCGCGGGCG
CGCTGGGGCGCCACGCTGCGCACTTCAGCGCTGCGCACGGCGTGCCGAGCCAGAGCTGCGCGCCTTCC
TCCGGCACTACGAGGCCGCGCTGGCCGCCGGCGTCCGCGCGACGCGCTGCGCCCGCTGGGACTTCCC
CGGCGCCTTCTACTTCGTGGGCACCGTGGTGTCAACCATAGTTTTCGGCATGACCACCCCGCGACGGTG
GGCGGGAAGGCCTTCTCATCGCTACGGGCTGTTCCGGCTGCGCTGGGACCATCCTGTTCTTCAACCTCT
TCTGGAGCGCATCATCTCGCTGCTGGCCTTATCATGCGCGCCTGCCGGAGCGCCAGCTGCGCCCGAG
CGGCTGCTGCCCGCACCTTCCGCCGGCTCCGCGCTCTCGGAGGCCGACAGCCTGGCGGGTGGAAAG
CCCTCGGTGTACCACGTGCTGCTCATCTGGGCTGTTCCGCGTGTGCTGCTGCTGCTGCGCCTCGGCCA
TGTACACCAGCGTGGAGGGCTGGGACTACGTGGACTCGCTCTACTTCTGCTTCTGCTCACCTCAGCACCAT
CGGCTTCGGGGACCTGGTGAACAGCAGCAGCCGCGCTACCGGAACAGGGGCTCTACCGCTGGGCAAC
TTCCTTTCATCTGCTCGGCGTGTGCTGCACTTACTCGCTTTCACGTCATCTCATCTCATCAAG
AGGTGCTCAACTGGATGCTGCGCAAGCTGAGCTGCCGCTGCTGCGCGCGCTGCTGCCCGGCTCCTGGCGC
GCCCTGGCCCGCGCAATGCCATCACCCAGGCTCCCGGCTGCGCCGCCCTGGCCGCGCTCGGCGCC
GACCCCGCGGCCCGACAGCGACGCCAGGGGCCCGCCTCTCGGGCGAGCTCATCTCCATGCGCGACC
TCACGGCTCCAACAAGGTGTGCTGGCGCTGCTGCAGAAGCAGCTGTGCGAGACGGCAACGGCTACCC
GCGCAGCGTGTGCGTCAACACGCGCCAGAACGGCTTCTCGGGCGGCTGGGCGCGCTGGGCATCATGAAC
AACCGGCTGGCCGAGACCAGCGCTCCAGG

ACGCGTACGCGGCCGCTCGAG - GFP Tag - GTTTAA



[View online >](#)

Protein Sequence: >RG208379 representing NM_022055
Red=Cloning site Green=Tags(s)

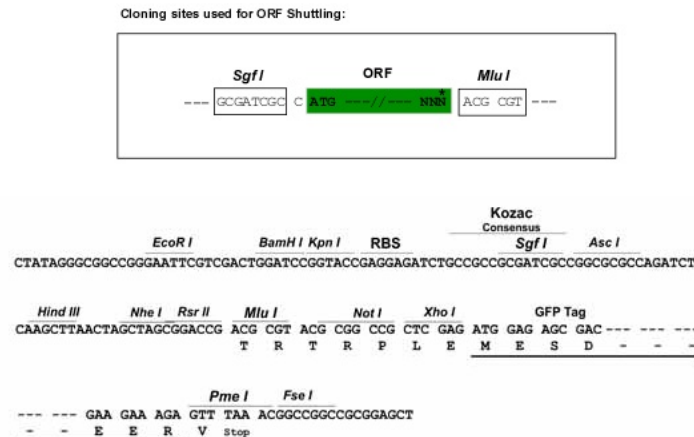
MSSRSRPPPPRRSRRLPRPSCCCCCRRSHLNEDTGRFVLLAALIGLYLVAGATVFSALSPGAEARA
 RWGATLRNFSAAHGVAEPELRAFLRHYEAALAAGVRADALRPRWDFPGAFYFVGTVVSTIGGMTTPATV
 GKKAFLIAYGLFGCAGTILFFNFLFLERIIISLLAFIMRACRERQLRRSGLLPATFRRGSALSEADSLAGWK
 PSVYHVLLILGLFAVLLSCCASAMYTSVEGWYDVSDFYCFVTFSTIGFDLVSSQHAAYRNQGLYRLGN
 FLFILLGVCCIIYSLFNVISILIKQVLNWMRLKLSRCCARCCPAPGAPLARRNAITPGSRLRRRLAALGA
 DPAARDSAEGRRLSGELISMRDLTASNKVSLLALLQKQLSETANGYPRSVCVNTRQNGFSGGVGALGIMN
 NRLAETSASR

TRTRPLE - GFP Tag - V

Restriction Sites:

SgfI-MluI

Cloning Scheme:



ACCN: NM_022055

ORF Size: 1290 bp

OTI Disclaimer: The molecular sequence of this clone aligns with the gene accession number as a point of reference only. However, individual transcript sequences of the same gene can differ through naturally occurring variations (e.g. polymorphisms), each with its own valid existence. This clone is substantially in agreement with the reference, but a complete review of all prevailing variants is recommended prior to use. [More info](#)

OTI Annotation: This clone was engineered to express the complete ORF with an expression tag. Expression varies depending on the nature of the gene.

Components: The ORF clone is ion-exchange column purified and shipped in a 2D barcoded Matrix tube containing 10ug of transfection-ready, dried plasmid DNA (reconstitute with 100 ul of water).

Reconstitution Method:

1. Centrifuge at 5,000xg for 5min.
2. Carefully open the tube and add 100ul of sterile water to dissolve the DNA.
3. Close the tube and incubate for 10 minutes at room temperature.
4. Briefly vortex the tube and then do a quick spin (less than 5000xg) to concentrate the liquid at the bottom.
5. Store the suspended plasmid at -20°C. The DNA is stable for at least one year from date of shipping when stored at -20°C.

RefSeq: [NM_022055.1](#), [NP_071338.1](#)

RefSeq Size: 1449 bp

RefSeq ORF: 1293 bp

Locus ID: 56660

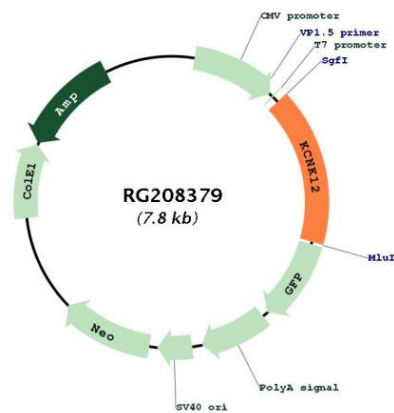
UniProt ID: [Q9HB15](#)

Cytogenetics: 2p16.3

Protein Families: Druggable Genome, Ion Channels: Potassium, Transmembrane

Gene Summary: This gene encodes one of the members of the superfamily of potassium channel proteins containing two pore-forming P domains. The product of this gene has not been shown to be a functional channel, however, it may require other non-pore-forming proteins for activity. [provided by RefSeq, Jul 2008]

Product images:



Circular map for RG208379