

## Product datasheet for **RG208378**

### **RAB17 (NM\_022449) Human Tagged ORF Clone**

#### Product data:

Product Type: Expression Plasmids  
 Product Name: RAB17 (NM\_022449) Human Tagged ORF Clone  
 Tag: TurboGFP  
 Symbol: RAB17  
 Mammalian Cell Selection: Neomycin  
 Vector: pCMV6-AC-GFP (PS100010)  
 E. coli Selection: Ampicillin (100 ug/mL)  
 ORF Nucleotide Sequence: >RG208378 representing NM\_022449  
 Red=Cloning site Blue=ORF Green=Tags(s)

TTTTGTAATACGACTCACTATAGGGCGGCCGGAATTCGTCGACTGGATCCGGTACCGAGGAGATCTGCC  
 GCC**CGATCGCC**

ATGGCACAGGCACACAGGACCCCCAGCCAGGGCTGCCCCAGCCAGCCCCGTGTGTTCAAGCTGGTTC  
 TCCTGGGAAGTGGCTCCGTGGGTAAGTCCAGCTTGGCTCTTCGGTACGTGAAGAACGACTTCAAGAGTAT  
 CCTGCCTACGGTGGGCTGTGCGTTCTTCACAAAGGTGGTGGATGTGGGTGCCACCTCTCTGAAGCTTGAG  
 ATCTGGGACACAGCTGGCCAGGAGAAGTACCACAGCGTCTGCCACCTCTACTTCAGGGGTGCCAACGCTG  
 CGCTTCTGGTGTACGACATCACCAGGAAGGATTCCTTCCCAAGGCTCAGCAGTGGCTGAAGGACCTGGA  
 GGAGGAGCTGCACCCAGGAGAAGTCTGGTGATGCTGGTGGGCAACAAGACGGACCTCAGCCAGGAGCGG  
 GAGGTGACCTTCCAGGAAGGGAAGGAGTTTGCCGACAGCCAGAAGTTGCTGTTTCATGGAACTTCGGCCA  
 AACTGAACCACCAGGTGTCGGAGGTGTTCAATACAGTGGCCCAAGAGCTACTGCAGAGAAGCGACGAGGA  
 GGGCCAGGCTCTACGGGGGATGCAGCTGTGGCTCTGAACAAGGGGCCCGCAGGCGAGGCCAAATGCTGC  
 GCCCAC

**ACGCGT**ACGCGGCCGCTCGAG - GFP Tag - GTTTAA

Protein Sequence: >RG208378 representing NM\_022449  
 Red=Cloning site Green=Tags(s)

MAQAHRTQPRAAPSQPRVFKLVLLGSGVSGKSSLALRYVKNDFKSILPTVGCFFTKVVDVGTSLKLE  
 IWDTAGQEKYHSVCHLYFRGANAALLVYDITRKDSFLKAQQWLKDLEELHPGEVLVMLVGNKTDLSQER  
 EVTFQEGKEFADSQKLLFMETSAKLNHQVSEVFNTVAQELLQRSDEEGQALRGDAVALNKGPRAQAKCC  
 AH

**TRTRPLE** - GFP Tag - V

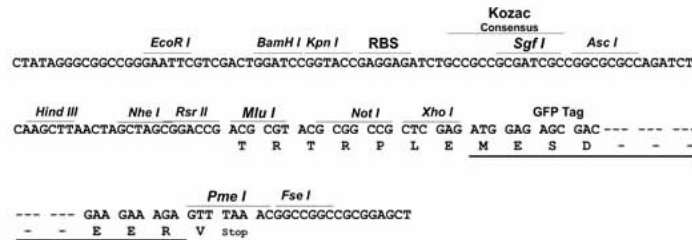
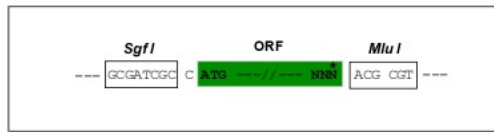


[View online »](#)

Restriction Sites: SgfI-MluI

Cloning Scheme:

Cloning sites used for ORF Shutting:



ACCN: NM\_022449

ORF Size: 636 bp

OTI Disclaimer: The molecular sequence of this clone aligns with the gene accession number as a point of reference only. However, individual transcript sequences of the same gene can differ through naturally occurring variations (e.g. polymorphisms), each with its own valid existence. This clone is substantially in agreement with the reference, but a complete review of all prevailing variants is recommended prior to use. [More info](#)

OTI Annotation: This clone was engineered to express the complete ORF with an expression tag. Expression varies depending on the nature of the gene.

Components: The ORF clone is ion-exchange column purified and shipped in a 2D barcoded Matrix tube containing 10ug of transfection-ready, dried plasmid DNA (reconstitute with 100 ul of water).

Reconstitution Method:

1. Centrifuge at 5,000xg for 5min.
2. Carefully open the tube and add 100ul of sterile water to dissolve the DNA.
3. Close the tube and incubate for 10 minutes at room temperature.
4. Briefly vortex the tube and then do a quick spin (less than 5000xg) to concentrate the liquid at the bottom.
5. Store the suspended plasmid at -20°C. The DNA is stable for at least one year from date of shipping when stored at -20°C.

Note: Plasmids are not sterile. For experiments where strict sterility is required, filtration with 0.22um filter is required.

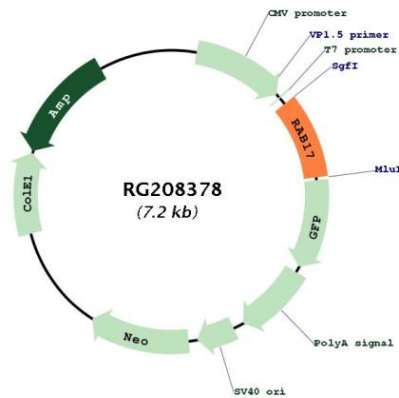
RefSeq: [NM\\_022449.4](#)

RefSeq Size: 1982 bp

RefSeq ORF: 639 bp

**Locus ID:** 64284  
**UniProt ID:** [Q9H0T7](#)  
**Cytogenetics:** 2q37.3  
**Domains:** ras, RAN, RAS, RHO, RAB  
**Protein Families:** Druggable Genome  
**Gene Summary:** The Rab subfamily of small GTPases plays an important role in the regulation of membrane trafficking. RAB17 is an epithelial cell-specific GTPase (Lutcke et al., 1993 [PubMed 8486736]). [supplied by OMIM, Oct 2009]

**Product images:**



Circular map for RG208378