

Product datasheet for **RG208372**

DDB1 (NM_001923) Human Tagged ORF Clone

Product data:

Product Type:	Expression Plasmids
Product Name:	DDB1 (NM_001923) Human Tagged ORF Clone
Tag:	TurboGFP
Symbol:	DDB1
Synonyms:	DDBA; UV-DDB1; XAP1; XPCE; XPE; XPE-BF
Mammalian Cell Selection:	Neomycin
Vector:	pCMV6-AC-GFP (PS100010)
E. coli Selection:	Ampicillin (100 ug/mL)
ORF Nucleotide Sequence:	>RG208372 representing NM_001923 Red=Cloning site Blue=ORF Green=Tags(s)

TTTTGTAATACGACTCACTATAGGGCGCCGGGAATTCGTCGACTGGATCCGGTACCGAGGAGATCTGCC
GCC**CGATCGCC**

ATGTCGTACAACACTACGTGGTAACGGCCAGAAGCCACC GCCGTGAACGGCTGCGTGACCGGACACTTTA
CTTCGGCCGAAGACTTAAACCTGTTGATTGCCAAAAACACGAGATTAGAGATCTATGTGGTCACCGCCGA
GGGGCTTCGGCCCGTCAAAGAGGTGGGCATGTATGGGAAGATTGCCGTCATGGAGCTTTTCAGGCCCAAG
GGGAGAGCAAGGACCTGCTGTTATCTTGACAGCGAAGTACAATGCCTGCATCCTGGAGTATAAACAGA
GTGGCGAGAGCATTGACATCATTACGCGAGCCCATGGCAATGTCCAGGACCGCATTGGCCGCCCTCAGA
GACCGGCATTATTGGCATCATTGACCCTGAGTGCCGGATGATTGGCCTGGTCTCTATGATGGCCTTTTC
AAGGTTATTCCACTAGATCGCGATAATAAAGAAGCTCAAGGCCCTCAACATCCGCCTGGAGGAGCTGCATG
TCATTGATGTCAAGTTCCTATATGGTTGCCAAGCACCTACTATTTGCTTTGTCTACCAGGACCTCAGGG
GCGGCACGTAAAAACCTATGAGGTGTCTCTCCGAGAAAAGGAATCAATAAGGGCCCTTGGAAACAGGAA
AATGTCGAAGCTGAAGCTTCCATGGTGATCGCAGTCCCAGAGCCCTTTGGGGGGCCATCATCATTGGAC
AGGAGTCAATCACCTATCACAATGGTGACAAATACCTGGCTATTGCCCTCCTATCATCAAGCAAAGCAC
GATTGTGTGCCACAATCGAGTGGACCCTAATGGCTCAAGATACCTGCTGGGAGACATGGAAGGCCGGCTC
TTCATGCTGCTTTTGGAGAAGGAGGAACAGATGGATGGCACCCTCAAGGATCCTCCGTGTAGAAC
TCCTTGGAGAGACCTCTATTGCTGAGTGTGACATACCTTGATAATGGTGTGTGTTTGTGGGTCTCG
CCTGGGTGACTCCAGCTTGTGAAGCTCAACGTTGACAGTAATGAACAAGGCTCCTATGTAGTGGCCATG
GAAACCTTTACCAACTTAGGACCCATTGTGATATGTGCGTGGTGGACCTGGAGAGGCAGGGCAGGGGC
AGCTGGTCACTTGTCTGGGGCTTTCAAGGAAGGTTCTTTGCGGATCATCCGGAATGGAATTGGAATCCA
CGAGCATGCCAGCATTGACTTACCAGGCATCAAAGGATTATGGCCACTGCGGTCTGACCCTAATCGTGAG
ACTGATGACACTTTGGTGTCTCTTTTGTGGGCCAGACAAGAGTTCTCATGTTAAATGGAGAGGAGGTAG
AAGAAACCGAAGTATGGTTCGTTGGATGATCAGCAGACTTTCTTCTGTGGCAACGTGGCTCATCAGCA
GCTTATCCAGATCACTTCAGCATCGGTGAGTGGTCTCTCAAGAACCCAAGCTCTGGTCAGTGAATGG



[View online >](#)

AAGGAGCCTCAGGCCAAGAACATCAGTGTGGCCTCCTGCAATAGCAGCCAGGTGGTGGTGGCTGTAGGCA
 GGGCCCTCTACTATCTGCAGATCCATCCTCAGGAGCTCCGGCAGATCAGCCACACAGAGATGGAACATGA
 AGTGGCTTGTGGACATCACCCATTAGGAGACAGCAATGGACTGTCCCCTCTTTGTGCCATTGGCCTC
 TGGACGGACATCTCGGCTCGATCTTGAAGTTGCCCTCTTTGAACTACTGCACAAGGAGATGCTGGGTG
 GAGAGATCATTCTCGTCCATCCTGATGACCACCTTTGAGAGTAGCCATTACCTCCTTTGTGCCTTGGG
 AGATGGAGCGCTTTTCTACTTTGGGCTCAACATTGAGACAGGCTGTTGAGCGACCGTAAGAAGGTGACT
 TTGGCACCCAGCCACCGTATTGAGGACTTTTCTGTTCTTTTCTACCACCAACGCTTTTGTGTTCTG
 ACCGCCCCACTGTCACTATAGCAGCAACCACAAATTGGTCTTCTCAAATGTCAACCTCAAGGAAGTGAA
 CTACATGTGTCCCCTCAATTGAGATGGCTATCCTGACAGCCTGGCGCTGGCCAACAATAGCACCCCTCACC
 ATTGGCACCATCGATGAGATCCAGAAGCTGCACATTTCGCACAGTCCCCTCTATGAGTCTCCAAGGAAGA
 TCTGCTACCAGGAAGTGTCCAGTGTTCGGGGTCTCTCCAGCCGATTGAAGTCCAAGACACGAGTGG
 GGGCAGCAGACCTTGGGCCAGCGCTAGCACCCAGGCTCTGTCCAGCAGTGAAGCTCCAGCAAGCTG
 TTCTCCAGCAGCACTGCTCCTCATGAGACCTCCTTTGGAGAAGAGGTGGAGGTGCACAACCTACTTATCA
 TTGACCAACACACCTTTGAAGTGTTCATGCCACCAGTTTCTGCAGAATGAATATGCCCTCAGTCTGGT
 TTCTGCAAGCTGGGCAAAGACCCCAACTTACTTATTGTGGGCACAGCAATGGTGTATCCTGAAGAG
 GCAGAGCCCAAGCAGGGTCCGATTGTGGTCTTTCAGTATTCGGATGGAAAACACAGACTGTGGCTGAAA
 AGGAAGTGAAAGGGCCGTGACTCTATGGTGAATTTAACGGGAAGCTGTTAGCCAGCATCAATAGCAC
 GGTGCGGCTCTATGAGTGGACAACAGAGAAGGAGCTGCGCACTGAGTGAACCACTACAACAACATCATG
 GCCCTCTACCTGAAGACCAAGGGCGACTTCATCCTGGTGGGCGACCTTATGCGCTCAGTGTCTGCTT
 CCTACAAGCCCATGGAAGGAACTTTGAAGAGATTGCTCGAGACTTTAATCCCACTGGATGAGTGTCTGT
 GAAATCTTGGATGATGACAATTTCTGGGGCTGAAAATGCCTTTAACTGTTTGTGTGTCAAAAGGAT
 AGCGTCCACCACCTGACGAGGAGCGGCAGCACCTCCAGGAGTGGTCTTTCCACCTGGGCGAGTTTG
 TCAATGTCTTTTGCACGGCTCTGTGTAATGCAGAATCTGGGTGAGACTCCACCCCAACAAGGCTC
 GTGCTCTTCGGCAGCGTCAACGGCATGATAGGGCTGGTACCTCACTGTCAAGAGAGCTGGTACAACCTC
 CTGCTGGACATGCAGAATCGACTCAATAAAGTCATCAAAAGTGTGGGAAGATCGAGCACTCCTTCTGGA
 GATCCTTTACACCGAGCGGAAGACAGAACCAGCCACAGGTTTTCATCGACGGTACTTATTGAGAGTTT
 CCTGGATATTAGCCGCCCAAGATGCAGGAGGTGGTGGCAAACCTACAGTATGACGATGGCAGCGGTATG
 AAGCGAGAGGCCACTGCAGACGACCTCATCAAGGTTGTGGAGGAGCTAACTCGGATCCAT

ACGCGTACGCGGCCGCTCGAG – GFP Tag – GTTTAA

Protein Sequence:

>RG208372 representing NM_001923
 Red=Cloning site Green=Tags(s)

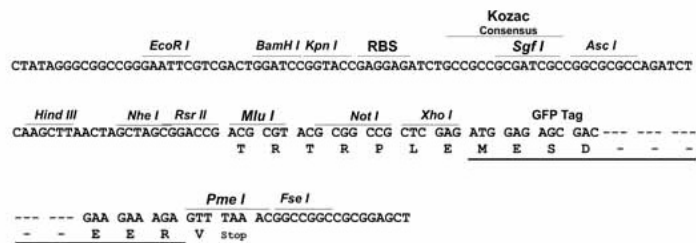
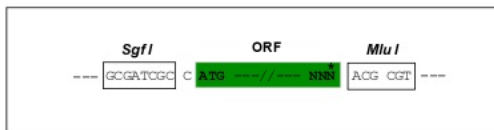
MSYNYVVTAAQKPTAVNGCVTGHFTSAEDLNLLIAKNTRLEIYVVTAEGLRPVKEVGMYGKIAVMELFRPK
 GESKDLLFILAKYNACILEYKQSGESIDITTRAHGNVQDRIGRPSSETGIIGIIDPECRMIGLRLYDGLF
 KVIPLDRDNKELKAFNIRLEELHVIDVKFLYGCQAPTICFVYQDPQGRHVKTIEVSLREKEFNKGPWKQE
 NVEAEASMVIIVPEPFGGAIIGQESITYHNGDKYLAIAPPIIKQSTIVCHNRVDPNGSRYLLGDMEGRL
 FMLLLEKEEQMDGTVTLKDLRVELLGETSIAECLTYLDNGVVFVGSRLGDSQLVKLNVDNSNEQGSYVAM
 ETFTNLGPIVDMCVVDLERQGGQQLVTCGAFKEGSLRIIRNGIGIHEHASIDLPGIKGLWPLRSDPNRE
 TDDTLVLSFVQTRVLMNGEEVEETELMGFVDDQQTFFCGNVAHQQLIQITSASVRLVSQEPKALVSEW
 KEPQAKNISVASCNSSQVVAVGRALYYLQIHPQELRQISHTEMEHEVACLDITPLGDSNGLSPLCAIGL
 WTDISARILKLPSEFELLHKEMLGGEIIPRSILMTTFESSHYLLCALGDGALFYFGLNIETGLLSDRKKVT
 LGTOPTVLRFRSLSTTNVAFACSDRPTVIYSSNHKLVFSNVNLKEVNYMCPLNSDGYPDLSLANNSTLT
 IGTIDEIQKLHIRTVPLYESPRICYQEVSQCFVLSRRIEVQDTSGGTTALRPSASTQALSSSVSSSKL
 FSSSTAPHETSFGEEVEVHNLIIIDQHTFEVLHAHQFLQNEYALSLVSCKLGKDPNTYFIVGTAMVYPEE
 AEPKQGRIVVFQYSDGKLQTVAEKEVKGAVYSMVEFNGLKLLASINSTVRLYEWTTTEKELRTECNHYNNIM
 ALYLKTKGDFILVGDLMRSVLLLAYKPMEGNFEEIARDFNPWNMSAVEILDDDNFLGAENAFNLVFCQKD
 SAATTDEERQHLQEVGLFHLGEFVNVFCHGSLVMQNLGETSTPTQGSVLFGTVNGMIGLVTSLSESWYNL
 LLDMQNRLNKVIKSVGKIEHSFWRFSFHTERKTEPATGFIDGDLIESFLDISRPKMQEVVANLQYDDGSGM
 KREATADDLIKVEELTRIH

TRTRPLE – GFP Tag – V

Restriction Sites: SgfI-MluI

Cloning Scheme:

Cloning sites used for ORF Shuttling:



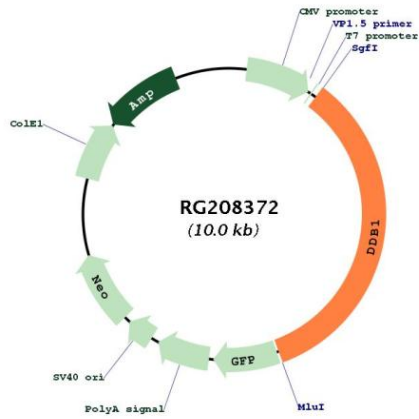
ACCN: NM_001923

ORF Size: 3420 bp

OTI Disclaimer: The molecular sequence of this clone aligns with the gene accession number as a point of reference only. However, individual transcript sequences of the same gene can differ through naturally occurring variations (e.g. polymorphisms), each with its own valid existence. This clone is substantially in agreement with the reference, but a complete review of all prevailing variants is recommended prior to use. [More info](#)

OTI Annotation:	This clone was engineered to express the complete ORF with an expression tag. Expression varies depending on the nature of the gene.
Components:	The ORF clone is ion-exchange column purified and shipped in a 2D barcoded Matrix tube containing 10ug of transfection-ready, dried plasmid DNA (reconstitute with 100 ul of water).
Reconstitution Method:	<ol style="list-style-type: none">1. Centrifuge at 5,000xg for 5min.2. Carefully open the tube and add 100ul of sterile water to dissolve the DNA.3. Close the tube and incubate for 10 minutes at room temperature.4. Briefly vortex the tube and then do a quick spin (less than 5000xg) to concentrate the liquid at the bottom.5. Store the suspended plasmid at -20°C. The DNA is stable for at least one year from date of shipping when stored at -20°C.
RefSeq:	<u>NM_001923.5</u>
RefSeq Size:	4221 bp
RefSeq ORF:	3423 bp
Locus ID:	1642
UniProt ID:	<u>Q16531</u>
Cytogenetics:	11q12.2
Domains:	CPSF_A
Protein Families:	Druggable Genome
Protein Pathways:	Nucleotide excision repair, Ubiquitin mediated proteolysis
Gene Summary:	<p>The protein encoded by this gene is the large subunit (p127) of the heterodimeric DNA damage-binding (DDB) complex while another protein (p48) forms the small subunit. This protein complex functions in nucleotide-excision repair and binds to DNA following UV damage. Defective activity of this complex causes the repair defect in patients with xeroderma pigmentosum complementation group E (XPE) - an autosomal recessive disorder characterized by photosensitivity and early onset of carcinomas. However, it remains for mutation analysis to demonstrate whether the defect in XPE patients is in this gene or the gene encoding the small subunit. In addition, Best vitelliform macular dystrophy is mapped to the same region as this gene on 11q, but no sequence alternations of this gene are demonstrated in Best disease patients. The protein encoded by this gene also functions as an adaptor molecule for the cullin 4 (CUL4) ubiquitin E3 ligase complex by facilitating the binding of substrates to this complex and the ubiquitination of proteins. [provided by RefSeq, May 2012]</p>

Product images:



Circular map for RG208372