

Product datasheet for **RG208361**

PEX6 (NM_000287) Human Tagged ORF Clone

Product data:

Product Type:	Expression Plasmids
Product Name:	PEX6 (NM_000287) Human Tagged ORF Clone
Tag:	TurboGFP
Symbol:	PEX6
Synonyms:	HMLR2; PAF-2; PAF2; PBD4A; PDB4B; PXAAA1
Mammalian Cell Selection:	Neomycin
Vector:	pCMV6-AC-GFP (PS100010)
E. coli Selection:	Ampicillin (100 ug/mL)



[View online »](#)

ORF Nucleotide
Sequence:

>RG208361 representing NM_000287
 Red=Cloning site Blue=ORF Green=Tags(s)

TTTTGTAATACGACTCACTATAGGGCGGCCGGGAATTCGTCGACTGGATCCGGTACCGAGGAGATCTGCC
 GCC**CGGATCGCC**

ATGGCGCTGGCTGTCTTGCGGGTCTGGAGCCCTTCCGACCCGAGACACCCCGTTGGCAGTGTCTGTGC
 CACCCGGGGGCCCGTGGCCGGCGCGGAGCTGGGCCTGGTGTGGCCCTGAGGCCTGCAGGGGAGAGCCC
 GGCAGGGCCGGCCTGCTGGTGGCAGCCCTGGAGGGGCCGGACGCGGGCACCCGAAGAGCAGGGTCCCGGG
 CCGCCGACGACTGTTAGCCGCGCTGCTGCGGCTCCTGGCACTGGGCTCCGGGGCCTGGGTGCGGG
 CGCGGGCGGTGCGGCGGCCCGCGCTAGGTTGGGCACTGCTTGGCACCTCGCTGGGCCTGGGCTCGG
 ACCGCGAGTGGGCGCTGCTGGTGGGCGGGAGAGACCCTCCAGTGCCTGGACCGGGGTGCTGGAG
 ACGCGGCCGGCTTGAAGGGCTGCTGGGCCAGGACTCGGCTGGCTGTGACTGAGCTCCGCGGGCGGG
 CCAGACTGTGCCAGAGTCTGGGACAGCAGTCCGCCCCACCCCGCCCGTGGTGTCTCTTTGCGGT
 TTCTGGCACAGTCCGGCGACTCCAGGGAGTTCTGGGAGGACTGGAGATCACTAGGGGTGAGCCGGAGC
 TGCTCCGTGGCCTTGGCCTCTCCAGGGCGAATGGGTGTGGGTGGCCAGGCCAGAGAGTCATCGAACA
 CTTACAGCCGCACTTGGCTAGGGTGCAGTCTCTAGAACCCTCGCTGGGACCTCTCTGATAGACTGGGACC
 CGGCTCTGGACCGCTGGGAGAGCCCTCGCTGACGGACTGGCGCTTGTCCCTGCCACTTTGGCTTTAAT
 CTTGGCTGTGACCCCTGGAAATGGGAGAGCTCAGAATCAGAGGTACTTGAAGGCTCCATCGCCCTG
 AAGACAAGGAAGCTGCTCATTGCTGCCTGGGCCTCCATTTGCCAGAGAGTTACACATCGAAATGTGTC
 TTCTCCCACTACAGCACTAATGAAATATGACGGTGTCTTTACCGCACTTTTACAGATACCCAGGGTA
 GTCCAGGAAGGGGATGTTCTATGTGCGCAACAATGGCAAGTAGAGATCCTGGAAGGAAGTCCAGAGA
 AACTGCCAGGTGGCGGAAATGTTTTAAAGTGAAGAAAACAGTTGGGGAAGCTCCAGATGGACCAGC
 CAGTGCCTACTTGGCCGACACCACCCATACCTCCTTGTACATGGTGGGTTCTACCCTGAGCCCTGTTCCA
 TGCTCCCTTCCAGAGGAATCCACTCTCTGGAGCAGTTGTCTCCTCCAGGCCTGGAGGCCTTGGTGTCTG
 AACTCTGTGCTGTCTGAAGCCTCGCCTCCAGCCAGGGGGTGGCCTGCTGACAGGAACTAGCAGTGTCT
 TCTACGGGGCCCCCAGGCTGTGGGAAGACCACAGTAGTTGCTGCTGCCTGTAGTACCTTGGGCTCCAC
 TTAAGGAGTGGCCTGCTCCAGCCTCTGTGCAGAAAGTAGTGGGGCTGTGGAGACAAAAGTGCAGGCCA
 TCTTCTCCGGGGCCCGCTTGGCGGCTGCAGTCTGTGCTCAGAGTGTGGACCTTCTGGGCCGGGA
 CCGTGATGGGCTGGGTGAGGATGCCCGTGTGATGGCTGTGCTGCGTACCTCCTCTCAATGAGGACCC
 CTAACAGCTGCCCTCCCTCATGGTTGTGGCCACCACAAGCCGGGCCAGGACCTGCCTGCTGATGTGC
 AGACAGCATTTCCCTCATGAGCTCGAGGTGCCTGCTCTGTGAGAGGGGACGCGGCTCAGCATCCTGCGGG
 CCTCACTGCCACCTTCCCTGGGCCAGGAGGTGAACTTGGCACAGCTAGCACGGCGGTGTGACGGCTTT
 GTGGTAGGGGATCTATGCCCTTCTGACCCACAGCAGCCGGGCAGCCTGCACCAGGATCAAGAAGTCAAG
 GTTTGGCAGGTGGCTTACTGAGGAGGATGAGGGGGAGCTGTGTGCTGCCGGCTTTCCTCTCTGGCTGA
 GGACTTTGGGCAGGCACTGGAGCAACTGCAGACAGCTCACTCCAGGCCGTTGGAGCCCCAAGATCCCC
 TCAGTGTCTGGCATGATGTGGTGGGCTGCAGGAGGTGAAGAAGGAGATCCTGGAGACCATTAGCTCC
 CCCTGGAGCACCTGAGCTACTGAGCCTGGGCTGAGACGCTCAGGCCTTCTGCTCCATGGGCCCCCTGG
 CACCGCAAGACCCTTCTGGCCAAGGCAGTAGCCACTGAGTGCAGCCTTACCTTCTCAGCGTGAAGGGG
 CCAGAGCTCATTAAACATGTATGTGGGCCAAAGTAGGAGAATGTGCGGGAAGTATTTGCCAGGGCCAGGG
 CTGCAGCTCCATGCATTATCTTCTTTGATGAACTGGACTTTTGGCCCCAAGCCGGGGGGAAGTGGAGA
 TTCTGGAGGAGTATGGACAGGGTGGTGTCTCAGCTCCTTGGCAGCTAGATGGGCTGCACAGCACTCAG
 GATGTGTTTGTGATTGGAGCCCAACAGACCAGATCTCCTGGACCCTGCCCTTCTGCGGCTGGCAGAT
 TTGACAAGCTGGTGTGTTGGGGCAAATGAGGACCGGGCCTCCAGCTACGCGTTCTAAGTGCATCAC
 ACGCAAATTAAGCTAGAGCCATCTGTGAGCCTGGTAAACGTGCTAGATTGCTGCCCTCCCAGCTGACG
 GCGCGGACCTTACTCTCTGCTCTGATGCTATGACAGCTGCCCTCAAACGCAGGGTTTACATGACCTGG
 AGGAAGGGCTGGAGCCAGGTAGCTCAGCACTGATGCTCACCATGGAGACTTGTGCAGGCTGCCCGCCG
 GCTGCAACCCCTAGTCAGTGAGCAGGAGTGTCCGGTACAAGCCATCCAGCGCAAGTTTGTCTGCCTGC

AC**GGGCCGCT**CGAG - GFP Tag - GTTTAA

Protein Sequence: >RG208361 representing NM_000287
 Red=Cloning site Green=Tags(s)

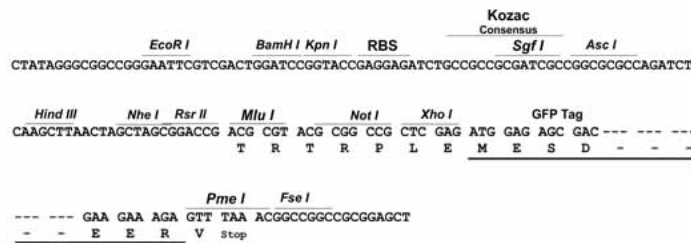
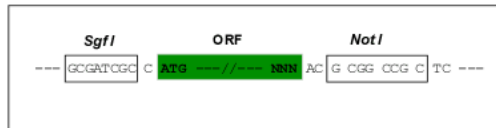
MALAVLRVLEPFPTETPPLAVLLPPGGPWAAELGLVLALRPAGESPAGPALLVAALEGPDAGTEEQGPG
 PPQLLVSRALLRLLALGSGAWVRARAVRRPPALGWALLGTSLGPGLGPRVGPLLVRRETLPVPGPRVLE
 TRPALQGLLPGGTRLAVTELGRARLCPESGDSRRPPPPVSSFAVSGTVRRLLQGVLGGTGDSLGVSR
 CLRGLGLFQGEVWVAQARESSNTSQPHLARVQVLEPRWDLSDRLGPGSGPLGEPLADGLALVPATLAFN
 LGCDPLEMGELRIQRYLEGSIAPEDKGSCSLLPGPPFARELHIEIVSSPHYSTNGNYDGVLYRHFQIPRV
 VQEGDVL CVPTIGQVEILEGSPEKLPWRWEMFFKVKKTVEAPDGPASAYLADTHTHTSLYMGSTLSPVP
 WLPSEESTLWSSLSPGLEALVSELCAVLKPRLQPGGALLTGTSSVLLRGPPEGKTTVVAACSHLGLH
 LLKVPCCSLCAESSGAVETKLQAFSRARRCPAVLLLTAVDLLGRDRDGLGEDARVMAVLRHLLLNEDP
 LNSCPPLMVVATTSRAQDL PADVQTA FPHELEVPALSEGQRLSILRALTAHLPLGQEVNLAQLARRCAGF
 VVGDL YALLTHSSRAACTRIKNSGLAGGLTEDEGELCAAGFPLLAEDFGQALEQLQTAHSQAVGAPKIP
 SVSWHDVGGLEVKKEILETIQLPLEHPELLSLGLRRSGLLLHGPPGTGKTL LAKAVATECSL TFLSVKG
 PELINMYVQGSEENVREVFARARAAAAPCIIFDELDLAPSRGRSGDGGVMDRVVSQLLAELDGLHSTQ
 DVFVIGATNRPDLLDPALLRPGFRDKLVFVGANEDRASQLRVLSAITRKFKLEPSVSLVNVLDCCPPQLT
 GADLYSLCSDAMTAALKRRVHDLEEGLPEGSSALMLTMEDLLQAAARLQPSVSEQELLRKYRIQRKFAAC

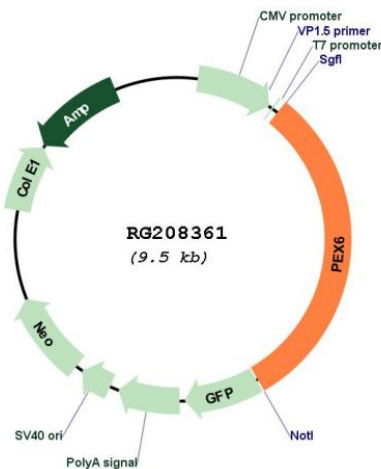
TRPLE - GFP Tag - V

Restriction Sites: SgfI-NotI

Cloning Scheme:

Cloning sites used for ORF Shuttling:



Plasmid Map:


ACCN: NM_000287

ORF Size: 2940 bp

OTI Disclaimer: The molecular sequence of this clone aligns with the gene accession number as a point of reference only. However, individual transcript sequences of the same gene can differ through naturally occurring variations (e.g. polymorphisms), each with its own valid existence. This clone is substantially in agreement with the reference, but a complete review of all prevailing variants is recommended prior to use. [More info](#)

OTI Annotation: This clone was engineered to express the complete ORF with an expression tag. Expression varies depending on the nature of the gene.

Components: The ORF clone is ion-exchange column purified and shipped in a 2D barcoded Matrix tube containing 10ug of transfection-ready, dried plasmid DNA (reconstitute with 100 ul of water).

Reconstitution Method:

1. Centrifuge at 5,000xg for 5min.
2. Carefully open the tube and add 100ul of sterile water to dissolve the DNA.
3. Close the tube and incubate for 10 minutes at room temperature.
4. Briefly vortex the tube and then do a quick spin (less than 5000xg) to concentrate the liquid at the bottom.
5. Store the suspended plasmid at -20°C. The DNA is stable for at least one year from date of shipping when stored at -20°C.

RefSeq: [NM_000287.2](#), [NP_000278.2](#)

RefSeq Size: 3287 bp

RefSeq ORF: 2943 bp

Locus ID: 5190

UniProt ID: [Q13608](#)

Cytogenetics:	6p21.1
Domains:	AAA, AAA
Protein Families:	Druggable Genome
Gene Summary:	<p>This gene encodes a member of the AAA (ATPases associated with diverse cellular activities) family of ATPases. This member is a predominantly cytoplasmic protein, which plays a direct role in peroxisomal protein import and is required for PTS1 (peroxisomal targeting signal 1, a C-terminal tripeptide of the sequence ser-lys-leu) receptor activity. Mutations in this gene cause peroxisome biogenesis disorders of complementation group 4 and complementation group 6. Several transcript variants encoding different isoforms have been found for this gene. [provided by RefSeq, Oct 2015]</p>