

## Product datasheet for **RG208359**

### Protein downstream neighbor of Son (DONSON) (NM\_017613) Human Tagged ORF Clone

#### Product data:

Product Type:	Expression Plasmids
Product Name:	Protein downstream neighbor of Son (DONSON) (NM_017613) Human Tagged ORF Clone
Tag:	TurboGFP
Symbol:	DONSON
Synonyms:	B17; C21orf60; MIMIS; MISSLA
Mammalian Cell Selection:	Neomycin
Vector:	pCMV6-AC-GFP (PS100010)
E. coli Selection:	Ampicillin (100 ug/mL)



[View online »](#)

**ORF Nucleotide Sequence:**

>RG208359 ORF sequence, **codon optimized**.  
 Due to the complexity of NM\_017613, the ORF clone is codon optimized for mammalian Expression.  
 The nucleotide sequence differs from the reference sequence, yet the amino acid sequence remains identical.

Red=Cloning site Blue=ORF Green=Tags(s)

TTTTGTAATACGACTCACTATAGGGCGCCGGGAATTCGTCGACTGGATCCGGTACCGAGGAGATCTGCCGCC**GCGATCGCC**

ATGGCCTTGAGTGTGCCGGTTATAGTCTGGTTTCAGAAAACCCCAAGTCTGTCGACTCCGACGAA  
 AAAGAGCCCGCTCTAGAGGAGCAGCTGCTTCTCCGCCACGGGAATTGACCGAACCTGCTGCTAGGAGGGC  
 CGCACTTGTGCGGGATTGCCACTCAGACCATTCCCTGCCGCCGAGGACGAGGAGGAGTTCTGGAGGA  
 GGGCCTGCCGCTGCCAGAAGAAACCCATTCCGCCGCTTGACAATAGACCCAGAGTTGCCGAGAACCC  
 CGGACGGCCCGCCGAGAACAGCCTGAAGCACCCGTACCCTTCCTGGATTCAAATCAAGAAAACGACCT  
 CCTGTGGGAAGAGAAATTTCCCGAGCGAACTACAGTCACCGAGCTTCCACAAACAAGCCATGTATATTC  
 TCCGAGCCGATATTCCATCTAGCAAGTCAACAGAACTGCCTGTGCGATTGGTCAATTAAGTACTAGCTTC  
 TCTTTACTAGCTCACAGCCTTTTACCTGGGCCGATCACCTTAAAGCACAAGAAGAAGCACAAGGCCTGGT  
 CCAACTGCAGAGCCACAGAGGTGACCCTGCCTAAATCCATCCAAGACCCTAAACTGAGCTCCGAGCTC  
 CGCTGCACCTTCCAACAATCACTGATCTATTGGCTCCACCCCGCTCTTTCTTGGCTTCCACTTTTTCTC  
 GAATTGGCGCCGATCGCAAAATGGCAGGAAAAACATCCCCTTGGAGCAACGATGCCACTTGCAACACGT  
 CCTGATGTCTGATTGGTCTGTATCCTTTACGAGTCTTTATAACCTGCTCAAAACGAAACTGTGTCGGTAT  
 TTCTACGTTTGTACCTATCAGTTTACTGTCCTGTTCCGAGCAGCAGGATTAGCTGGAAGTGACTTAATCA  
 CAGCTCTCATATCTCCAACAACCGAGGTTTAAAGAGAAGCTATGAGAAATGAAGGTATTGAATTTCTCT  
 GCCTTTAATAAAAGAAAGTGCCATAAGAAGGAGACAGCATCTGGAACAAGCTTGGGATATGGGAGGAG  
 CAAGCCATCAGTATGAGGATGAAGAGGAAAGTTTTCTGGCTGGAAGAGATGGGTGTGCAAGATAAAA  
 TTAAGCCAGACATACTTTCTATCAAGCTGCGTAAAGAGAAACATGAAGTACAATGGATCACAGACC  
 TGAATCTGTTGTGTTGGTAAAAGGAATCAACACCTTTACATTGCTCAATTTTTGATTAACCTAAGAGT  
 TTAGTTGCTACCTCAGGTCCACAGGAGGACTTCTCCAACCCTTGTCCCTGTTGCTTCCGAGGTG  
 CCACAATGCAAAATGCTTAAAGCACGGAGTGTGAATGTGAAGACACAAGCTTTTCTGGATACAGAGACCA  
 ATTTAGTTTGGAGATTACAGGTCTATCATGCCTCATTCTCTGCATTCACTGACCATGCTGCTCAAATCT  
 TCACAGAGTGGATCTTTCTGCACTGTATCCACACGAGCCAACTGCTGTATTTAACAATCTGCCTGC  
 AAATGGACAAAGTACTTGATATGGAGGTTGTTCAAGGAGCTTACTAAGTGTGGTTTGACCCCTAACAC  
 TCTGGAGCAACTAGTCAAATACCGTACTTGGGAAATCATCTTTACGGAATGTGGTGTGAGAGACTAC  
 ATTTATAATTGGAGATCC

**ACGCGT**ACGCGGCCGCTCGAG - GFP Tag - GTTTAA

**Protein Sequence:** >RG208359 representing NM\_017613  
 Red=Cloning site Green=Tags(s)

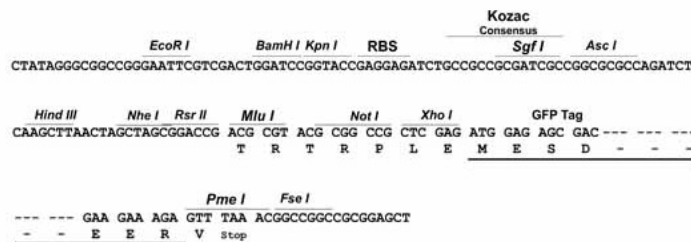
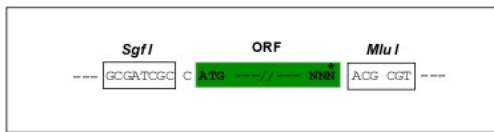
MALSVPGYSPGFRKPPEVVRLRRKRARSRGAAASPPRELTEPAARRAALVAGLPLRPFPAAGGRGGGSGG  
 GPAAARRNPFARLDNRPRVAAEPPDGPAREQPEAPVPFLDSNQENDLLWEEKFPERTTVTELPQTSHVVSF  
 SEPDIPSSKSTELPVDWSIKTRLLFTSSQPF TWADHLKAQEEAQGLVQHCRATEVTLPKSIQDKLSSEL  
 RCTFQQSLIYWLHPALSWLPLFPRIGADRKMAGKTSPWSNDATLQHVLMSDWSVSFTSLYNLLKTKLCPY  
 FYVCTYQFTVLFRAAGLAGSDLITALISPTTRGLREAMRNEGIEFSLPLIKESGHKKETASGTSLYGEE  
 QAI SDEDEEESF SWLEEMGVQDKIKKPDILSIKLRKEKHEVQMDHRPESVVLVKGINTFTLLNFLINSKS  
 LVATSGPQAGLPPTLLSPVAFRGATMQLKARSVNKTQALSGYRDQFSLEITGPIMPHSLHSLTMLLKS  
 SQSGSFSAVLYPHEPTAVFNICLQMDKVL DMEVVHKELTNCGLHPNTLEQLSQIPLL GKSSLRNVVLRDY  
 IYNWRS

TRTRPLE - GFP Tag - V

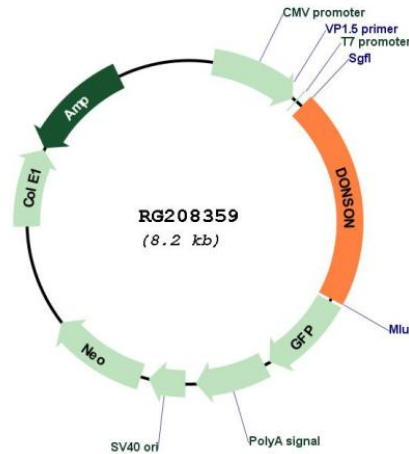
**Restriction Sites:** SgfI-MluI

**Cloning Scheme:**

Cloning sites used for ORF Shutting:



Plasmid Map:



ACCN: NM\_017613

ORF Size: 1698 bp

**OTI Disclaimer:** Due to the inherent nature of this plasmid, standard methods to replicate additional amounts of DNA in E. coli are highly likely to result in mutations and/or rearrangements. Therefore, OriGene does not guarantee the capability to replicate this plasmid DNA. Additional amounts of DNA can be purchased from OriGene with batch-specific, full-sequence verification at a reduced cost. Please contact our customer care team at [custsupport@origene.com](mailto:custsupport@origene.com) or by calling 301.340.3188 option 3 for pricing and delivery.

The molecular sequence of this clone aligns with the gene accession number as a point of reference only. However, individual transcript sequences of the same gene can differ through naturally occurring variations (e.g. polymorphisms), each with its own valid existence. This clone is substantially in agreement with the reference, but a complete review of all prevailing variants is recommended prior to use. [More info](#)

**OTI Annotation:** This clone was engineered to express the complete ORF with an expression tag. Expression varies depending on the nature of the gene.

**Components:** The ORF clone is ion-exchange column purified and shipped in a 2D barcoded Matrix tube containing 10ug of transfection-ready, dried plasmid DNA (reconstitute with 100 ul of water).

**Reconstitution Method:**

1. Centrifuge at 5,000xg for 5min.
2. Carefully open the tube and add 100ul of sterile water to dissolve the DNA.
3. Close the tube and incubate for 10 minutes at room temperature.
4. Briefly vortex the tube and then do a quick spin (less than 5000xg) to concentrate the liquid at the bottom.
5. Store the suspended plasmid at -20°C. The DNA is stable for at least one year from date of shipping when stored at -20°C.

**RefSeq:** [NM\\_017613.2](#), [NP\\_060083.1](#)

**RefSeq Size:** 2500 bp

**RefSeq ORF:** 1701 bp

**Locus ID:** 29980

**UniProt ID:** [Q9NYP3](#)

**Cytogenetics:** 21q22.11

**Gene Summary:** This gene lies downstream of the SON gene and spans 10 kb on chromosome 21. The function of this gene is unknown. [provided by RefSeq, Jul 2008]