

Product datasheet for **RG208335**

Ninjurin 1 (NINJ1) (NM_004148) Human Tagged ORF Clone

Product data:

Product Type: Expression Plasmids
Product Name: Ninjurin 1 (NINJ1) (NM_004148) Human Tagged ORF Clone
Tag: TurboGFP
Symbol: Ninjurin 1
Synonyms: NIN1; NINJURIN
Mammalian Cell Selection: Neomycin
Vector: pCMV6-AC-GFP (PS100010)
E. coli Selection: Ampicillin (100 ug/mL)
ORF Nucleotide Sequence: >RG208335 representing NM_004148.
Blue=ORF Red=Cloning site Green=Tag(s)

```
GCTCGTTTAGTGAACCGTCAGAATTTGTAAACGACTCACTATAGGGCGGCCGGGAATTCGTGACTG
GATCCGGTACCGAGGAGATCTGCCGCCGCGATCGCC
ATGGACTCGGGAACCGAGGAGTACGAGCTCAACGGCGGCCTGCCTCCGGGCACACCCGGCTCCCCGGAC
GCCTCGCCGGCCCGCTGGGGCTGGAGGCACGGGCCATCAACGTGAACATTACGCCAGCAAGAAGAGC
GCAGCCGAGAGCATGCTGGACATCGCGTGTGATGGCCAACGCGTCCCAGCTGAAGGCCGTCGTGGAA
CAGGGCCCGAGCTTCGCCTTCTATGTGCCCTGGTGGTCTCATCTCCATCTCCCTTGTGCTGCAGATC
GGCGTGGGGTGTGCTCATCTTCTTGTCAAGTACGACCTTAACAACCCGGCCAAGCACGCCAAGCTG
GACTTCTCAACAACCTGGCCACGGCCCTGGTGTTCATCATCGTGGTAGTCAACATCTTCATCACGGCC
TTCGGGGTCCAGAAGCCCTTGATGGACATGGCACCCCGAGCAG
AGCGGACCGACGCGTACGCGGCCGCTCGAG - GFP Tag - GTTTAAAC
```

Protein Sequence: >Peptide sequence encoded by RG208335
Blue=ORF Red=Cloning site Green=Tag(s)

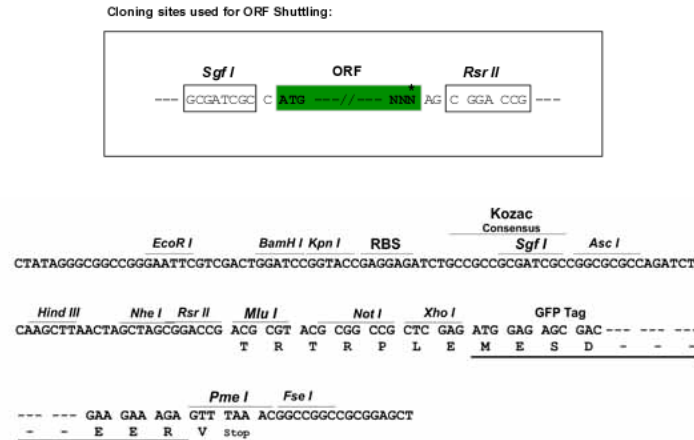
```
MDSGTEEYELNGLPPGTPGSPDASPARWGRHGPINVNHYASKKSAAESMLDIALLMANASQLKAVVE
QGPFSAFYVPLVVLISISLVLQIGVGVLLIFLVKYDLNPAKHAKLDFLNNLATGLVFIIVVNVIFITA
FGVQKPLMDMAPQQ
SGPTRRTRPLEMESDESGLPAMEIECRITGTLNGVEFELVGGEGTPEQGRMTNKMKSTKGALTFSPYLL
SHVMGYGFYHFGTYPSGYENPFLHAINNGGYTNTRIEKYEDGGVLHVFSYRYEAGRVIGDFKVMGTGF
PEDSVIFTDKIIRSNAIVEHLHPMGDNDLDGSFTRTFLRDGGYSSVVDSHMHFKSAIHPSILQNGGP
MFAFRRVEEDHSNTELGIVEYQHAFKTPDADAGEERV
```

Restriction Sites: Sgfl-RsrII



[View online »](#)

Cloning Scheme:



ACCN: NM_004148

ORF Size: 456 bp

OTI Disclaimer: The molecular sequence of this clone aligns with the gene accession number as a point of reference only. However, individual transcript sequences of the same gene can differ through naturally occurring variations (e.g. polymorphisms), each with its own valid existence. This clone is substantially in agreement with the reference, but a complete review of all prevailing variants is recommended prior to use. [More info](#)

OTI Annotation: This clone was engineered to express the complete ORF with an expression tag. Expression varies depending on the nature of the gene.

Components: The ORF clone is ion-exchange column purified and shipped in a 2D barcoded Matrix tube containing 10ug of transfection-ready, dried plasmid DNA (reconstitute with 100 ul of water).

- Reconstitution Method:
1. Centrifuge at 5,000xg for 5min.
 2. Carefully open the tube and add 100ul of sterile water to dissolve the DNA.
 3. Close the tube and incubate for 10 minutes at room temperature.
 4. Briefly vortex the tube and then do a quick spin (less than 5000xg) to concentrate the liquid at the bottom.
 5. Store the suspended plasmid at -20°C. The DNA is stable for at least one year from date of shipping when stored at -20°C.

RefSeq: [NM_004148.4](#)

RefSeq Size: 1309 bp

RefSeq ORF: 459 bp

Locus ID: 4814

UniProt ID: [Q92982](#)

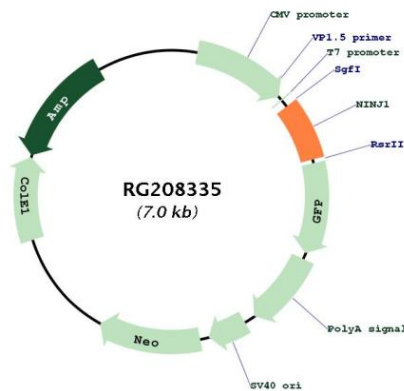
Cytogenetics: 9q22.31

Protein Families: Transmembrane

MW: 16.3 kDa

Gene Summary: The ninjurin protein is upregulated after nerve injury both in dorsal root ganglion neurons and in Schwann cells (Araki and Milbrandt, 1996 [PubMed 8780658]). It demonstrates properties of a homophilic adhesion molecule and promotes neurite outgrowth from primary cultured dorsal root ganglion neurons.[supplied by OMIM, Aug 2009]

Product images:



Circular map for RG208335