

Product datasheet for **RG208322**

SV2A (NM_014849) Human Tagged ORF Clone

Product data:

Product Type:	Expression Plasmids
Product Name:	SV2A (NM_014849) Human Tagged ORF Clone
Tag:	TurboGFP
Symbol:	SV2A
Synonyms:	SV2
Mammalian Cell Selection:	Neomycin
Vector:	pCMV6-AC-GFP (PS100010)
E. coli Selection:	Ampicillin (100 ug/mL)



[View online »](#)

ORF Nucleotide Sequence:

>RG208322 representing NM_014849
 Red=Cloning site Blue=ORF Green=Tags(s)

TTTTGTAATACGACTCACTATAGGGCGGCCGGAATTCGTCGACTGGATCCGGTACCGAGGAGATCTGCC
 GCC**CGGATCGCC**

ATGGAAGAGGGCTTCGAGACCGGGCAGCTTTCATCCGTGGGGCCAAAGACATTGCTAAGGAAGTCAAAA
 AGCATGCGGCCAAGAAGGTGGTGAAGGGCCTGGACAGAGTCCAGGACGAATATCCCGAAGATCGTACTC
 CCGCTTTGAGGAGGAGGATGATGATGATGACTTCCCTGCTCCCAGTGATGGTTATTACCGAGGAGAAGGG
 ACCCAGGATGAGGAGGAAGGTGGTGCATCCAGTATGCTACTGAGGGCCATGACGAGGATGATGAGATCT
 ATGAAGGGGAATATCAGGGCATTCCCGGGCAGAGTCTGGGGCCAAAGGCGAGCGGATGGCAGATGGGGC
 GCCCTGGCTGGAGTAAGGGGGGCTTGGTGTGGGGAGGGTCCCCTGGGGCCGGGGGGAGGCACAA
 CGACGGAAAGAACGAGAAGAAGTGGCCCAACAGTATGAAGCCATCTACGGGAGTGTGGCCACGGCCGCT
 TCCAGTGGACACTGTATTTGTGCTTGGTCTGGCGCTGATGGCTGACGGTGTGGAGTCTTTGTGGTGGG
 CTTCTGCTGCCAGCGTGAGAAAGACATGTGCCTGTCCGACTCCAACAAGGCATGCTAGGCCTCATC
 GTCTACCTGGGCATGATGGTGGGAGCCTTCTCTGGGGAGGTCTGGCTGACCGGCTGGGTCCGAGGCACT
 GTCTGCTCATCTCGCTCTCAGTCAACAGCGTCTTCGCCTTCTTCTCATCTTTTGTCCAGGGTTACGGCAC
 TTTCTCTTCTGCCGCTACTTTCTGGGGTTGGGATTGGAGGGTCCATCCCCATTGTCTTCTCTATTTTC
 TCCGAGTTTCTGGCCAGGAGAAACGAGGGGAGCATTGAGCTGGCTCTGCATGTTTTGGATGATTGGTG
 GCGTGTACGCAGCTGCTATGGCTGGGCCATCATCCCCACTATGGGTGGAGTTTTTCAGATGGGTCTGCT
 CTACCAGTCCACAGCTGGAGGGTCTTCGTCCTCGTCTGCGCCTTCTCTGTGTTTGCATTGGGGCT
 CTGACCACGCAGCCTGAGAGCCCCGTTTCTTCTAGAGAATGAAAGCATGATGAGGCCATGATGAGGCTGGATGGTGC
 TGAAGCAGGTCCATGATACCAACATGCGAGCCAAAGGACATCTGAGCGAGTGTCTCAGTAACCCACAT
 TAAGACGATTCATCAGGAGGATGAATTGATTGAGATCCAGTCCGACACAGGGACCTGGTACCAGCGCTGG
 GGGTCCGGCCCTGAGCCTAGGGGGCAGGTTTGGGGGAATTTCTCTCTCTGTTTTGGTCCCGAATATC
 GGCGCATCACTCTGATGATGATGGGTGTGGTTCACCATGTCATTACAGTACTATGGCCTGACCGTCTG
 GTTCTCTGACATGATCCGCCATCTCCAGGCAGTGGACTACGCATCCCGCACAAAGTGTCCCGGGGAG
 CGCGTAGAGCATGTAACTTTTAACTTACGTTGGAGAATCAGATCCACCGAGGCGGGCAGTACTTCAATG
 ACAAGTTCATTGGGCTGCGGCTCAAGTCAAGTGCCTTTGAGGATCCCTGTTTGAAGAGTGTATTTTGA
 GGATGTACATCCAGCAACACGTTTTTCCGCAACTGCACATTCATCAACTGTGTCTATAAAGTACTGAC
 CTGTTTCGAGTACAAGTTTGTGAACAGCCGTCTGATAAACAGTACATTCCTGCACAACAAGGAGGGCTGCC
 CGCTAGACGTGACAGGGACGGGCGAAGGTGCCTACATGGTATACTTTGTGAGCTTCTGGGGACACTGGC
 AGTGCTTCTGGGAATATCGTGTCTGCCCTGCTCATGGACAAGATCGGCAGGCTCAGAATGCTTGTGTC
 TCCAGCGTGTGCTGTGCTCTCTGCTTCTTCTGCTTTTTGGGAACAGTGAAGTCCGGCCATGATCGCTC
 TGCTCTGCCTTTTTGGCGGGTCAAGTTCATCCTGGAATGCGCTGGACGTGTTGACTGTTGAAGTCTA
 CCCCTCAGACAAGAGGACCACAGCTTTTGGCTTCTGAATGCCCTGTGTAAGCTGGCAGCTGTGCTGGGG
 ATCAGCATCTTACATCTTCTGGGAATCACCAAGGCTGCACCCATCTCTTTCCTCAGCTGCCCTTG
 CCCTTGGCAGCTCTTGGCCCTGAAGCTGCCTGAGACCCGGGGCAGGTGCTGCAG

ACGCGTACGCGGCCGCTCGAG - GFP Tag - GTTTAA

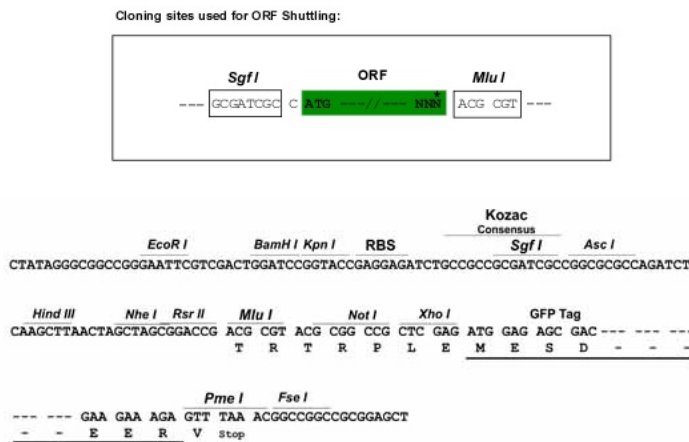
Protein Sequence: >RG208322 representing NM_014849
 Red=Cloning site Green=Tags(s)

MEEGFRDRAAFIRGAKDIAKEVKKHAAKVVKGLDRVQDEYSRRSYSRFEEEDDDDDFPAPSDGYRGEQ
 TQDEEEGASSDATEGHDEDEIYEGEYQGIIPRAESGGKGERMADGAPLAGVRGGLSDGEGPPGGRGEAQ
 RRKEREELAQQYEAILRECGHGRFQWTL YFVLGLALMADGVEFVVGFLVPSAEKDMCLSDSNKMLGLI
 VYLGMVGAFLWGGLADRLGRRQCLLISLSVNSVFAFFSSVFQGYGTFLFCRLLSGVIGGSIPIVFSYF
 SEFLAQEKRGEHLSWLCMFWMIGGVYAAAMAWAIIPHYGWSFQMGSAQYFHSWRVFLVCAFPVFAIGA
 LTTQPEsprffLENGKHDEAWMLKQVHDTNMRAGKHPERVFSVTHIKTIHQEDELIEIQSDTGTWYQRW
 GVRALSLGGQVWGNFLSCFGPEYRRITLMMGVWFTMSFSYYGLTVWFPDMIRHLQAVDYASRTKVFPGE
 RVEHVTNFNTLENQIHRGGQYFNDKFIGLRLKSVSFEDSLFEECYFEDVTSNTFFRNCTFINTVFYNTD
 LFEYKFNVSRLINSTFLHNKEGCPLDVTGTGEGAYMVYVVSFLGTLAVLPGNIVSALLMDKIGRLMLAG
 SSVMSCVSCFFLSFGNSESAMIALLCFFGGVSIASWNALDVLTVELYPDKRTTAFGLNALCKLAAVLG
 ISIFTSFVGITKAAPILFASAALALGSSLALKLPETRGQVLQ

TRTRPLE - GFP Tag - V

Restriction Sites: SgfI-MluI

Cloning Scheme:



ACCN: NM_014849

ORF Size: 2226 bp

OTI Disclaimer: The molecular sequence of this clone aligns with the gene accession number as a point of reference only. However, individual transcript sequences of the same gene can differ through naturally occurring variations (e.g. polymorphisms), each with its own valid existence. This clone is substantially in agreement with the reference, but a complete review of all prevailing variants is recommended prior to use. [More info](#)

OTI Annotation: This clone was engineered to express the complete ORF with an expression tag. Expression varies depending on the nature of the gene.

Components: The ORF clone is ion-exchange column purified and shipped in a 2D barcoded Matrix tube containing 10ug of transfection-ready, dried plasmid DNA (reconstitute with 100 ul of water).

Reconstitution Method:

1. Centrifuge at 5,000xg for 5min.
2. Carefully open the tube and add 100ul of sterile water to dissolve the DNA.
3. Close the tube and incubate for 10 minutes at room temperature.
4. Briefly vortex the tube and then do a quick spin (less than 5000xg) to concentrate the liquid at the bottom.
5. Store the suspended plasmid at -20°C. The DNA is stable for at least one year from date of shipping when stored at -20°C.

RefSeq: [NM_014849.5](#)

RefSeq Size: 4066 bp

RefSeq ORF: 2229 bp

Locus ID: 9900

UniProt ID: [Q7L0J3](#)

Cytogenetics: 1q21.2

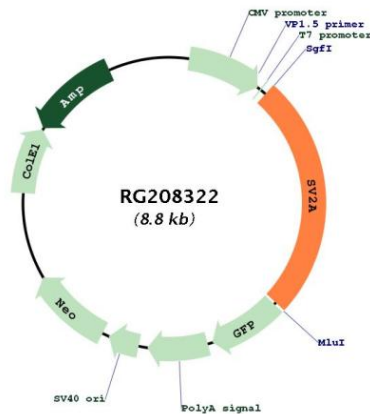
Domains: sugar_tr

Protein Families: Secreted Protein, Transmembrane

Protein Pathways: ECM-receptor interaction

Gene Summary: The protein encoded by this gene is one of three related synaptic vesicle proteins. The encoded protein may interact with synaptotagmin to enhance low frequency neurotransmission in quiescent neurons. [provided by RefSeq, Jun 2016]

Product images:



Circular map for RG208322