

Product datasheet for **RG208305**

GGA1 (NM_001001560) Human Tagged ORF Clone

Product data:

Product Type:	Expression Plasmids
Product Name:	GGA1 (NM_001001560) Human Tagged ORF Clone
Tag:	TurboGFP
Symbol:	GGA1
Mammalian Cell Selection:	Neomycin
Vector:	pCMV6-AC-GFP (PS100010)
E. coli Selection:	Ampicillin (100 ug/mL)



[View online »](#)

ORF Nucleotide Sequence:

>RG208305 representing NM_001001560
 Red=Cloning site Blue=ORF Green=Tags(s)

TTTTGTAATACGACTCACTATAGGGCGGCCGGAATTCGTCGACTGGATCCGGTACCGAGGAGATCTGCC
 GCC**GCGATCGCC**

ATGGAGCCCGCATGGAGCCGAGACTCTGGAGGCGCAATCAATAGAGCCACGAACCCCTGAACAAGG
 AGCTCGACTGGGCCAGCATCAACGGCTTCTGCGAGCAGCTCAACGAGACTTTGAGGGGCCCTCCACTCGC
 CACCCGGCTGCTGGCCACAAGATCCAGTCCCCACAGGAGTGGGAGGCGATCCAGGCCTTACCGGTGCTG
 GAAACATGCATGAAGAGCTGCGCAAGCGTTCCACGACGAAGTGGGCAAGTTCCGCTTTCTCAACGAGC
 TCATCAAGGTCGTCTCCCAAGTATCTGGGCTCTCGGACATCGGAGAAGGTGAAGAACAAGATCTTGA
 GCTCCTTACAGCTGGACAGTGGCCTGCCGAGGAGGTGAAAATCGCAGAGGCCACCAGATGCTAAAG
 AAGCAGGGGATTGTAAGTCCGACCCCAAGCTTCCAGATGACACTACCTTCCCCTTCTCCTCCACGGC
 CGAAGAATGTGATCTTTGAAGATGAGGAGAAATCCAAGATGCTGGCCCGCCTGCTGAAGAGCTCCCATCC
 CGAAGACCTCCGCGCAGCCAATAAGCTCATCAAAGAGATGGTGCAGGAGGACCAGAAGCGGATGGAGAAG
 ATCTCGAAGAGGGTGAATGCCATCGAGGAGGTGAACAACAATGTGAAACTGCTCACGGAGATGGTATGA
 GCCACAGCCAGGGCGGCCGAGCAGCTGGCAGCAGCGAGGACCTCATGAAGGAACTGTACCAGCGCTGTGA
 GCGGATGCGGCCACGCTCTTCCGACTGGCGAGTGACACAGAGGACAATGATGAGGCCTTAGGCCTCAGT
 GACCCACACCCCTTACGGCCCAAGCCTGGATGGTACCGGATGGAACAGCTTCCAGTCGTCCGATGCCA
 CTGAGCCCCCAGCCCCTGCTCTGGCCCAGGCCCCAGTATGGAAGCCGACCCCCAGCGCAGACATCCCT
 GCCAGCAAGCAGCGGTCTGGACGACCTAGACCTCCTGGGAAGACCCTCCTGCAGCAGTCGCTGCCCCCG
 GAATCCAGCAAGTGGGTGGGAGAAGCAGCAGCAACCCCGGCTCACACTCCGGGACCTGCAGAATA
 AGAGCAGCAGCTGCAGCTCCCCAGCTCCAGCGCCACCAGCCTTCCACACCGTGTCCCAGAGCCCCC
 CAGGCCTCCGAGCAGCCCGTACCAACCGAGCTCTCACTGGCCAGCATCACTGTGCCCTGGAGTCCATC
 AAACCCAGCAACATCCTGCCCGTACTGTGTATGACCAGCACGGCTTCCGCATCCTCTTCCATTTTGCC
 GGGACCCACTGCCAGGGCGCTCCGACGTGCTGGTGGTGGTTCCATGCTGAGCACCGCCCCCAGCC
 CATCCGCAACATCGTGTCCAGTCAGCTGTCCCAAGGTTATGAAGGTGAAGCTGCAGCCACCCTCGGGC
 ACGGAGCTGCCAGCTTTAAACCCATCGTCCACCCTCAGCAATCACCCAGGTCTGCTGCTTGCCAACC
 CCCAGAAGGAGAAGTTCCGCTCCGCTACAAGCTCACCTTACCATGGGTGACCAGACTACAACGAGAT
 GGGGGATGTGGACCAGTCCCCCACCCTGAAACCTGGGGTAGCCTC

ACGCGTACGCGGCCGCTCGAG - GFP Tag - GTTTAA

Protein Sequence:

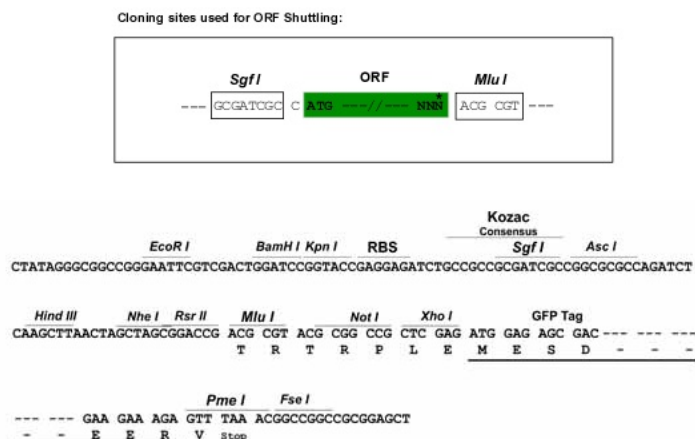
>RG208305 representing NM_001001560
 Red=Cloning site Green=Tags(s)

MEPAMEPETLEARINRATNPLNKELDWASINGFCEQLNEDFEGPPLATRLLAHKIQSPQEWAIQALTVL
 ETCMKSCGKRFHDEVGKFRFLNELIKVVSPKYLGSRTSEKVKNKILELLYSWTVGLPEEVKIAEAYQMLK
 KQGIKSDPKLPDDTTFFLPPRPKNVIFEDEEKSKMLARLLKSSHPEDLRAANKLIKEMVQEDQKRMEK
 ISKRVAIEEVNNVKKLLTEMVMSHSQGGAAAGSSEDLMKELYQRCERMPTLFRLASDTEDEALGLS
 DPTPPSGPSLDGTGWNFSQSSDATEPPAPALAQPSMESRPPAQTSLPASSGLDDLGLKTLQQLSPP
 ESQQVRWEKQPTPRLTLRDLQNKSSSSPSSSATSLLHTVSPEPPRPQPVPTELASITVPLESI
 KPSNILPVTYDQHFRIILFHFARDPLPGRSDLVVVVSMSTAPQPIRNIIVFQSAVPKVMKVLQPPSG
 TELPAFNPIVHPSAITQVLLLANPQKEKVRRLRYKLFTMGDQTYNEMGDVDQFPPPETWGS

TRTRPLE - GFP Tag - V

Restriction Sites:

Sgfl-MluI

Cloning Scheme:


ACCN: NM_001001560

ORF Size: 1656 bp

OTI Disclaimer: The molecular sequence of this clone aligns with the gene accession number as a point of reference only. However, individual transcript sequences of the same gene can differ through naturally occurring variations (e.g. polymorphisms), each with its own valid existence. This clone is substantially in agreement with the reference, but a complete review of all prevailing variants is recommended prior to use. [More info](#)

OTI Annotation: This clone was engineered to express the complete ORF with an expression tag. Expression varies depending on the nature of the gene.

Components: The ORF clone is ion-exchange column purified and shipped in a 2D barcoded Matrix tube containing 10ug of transfection-ready, dried plasmid DNA (reconstitute with 100 ul of water).

Reconstitution Method:

1. Centrifuge at 5,000xg for 5min.
2. Carefully open the tube and add 100ul of sterile water to dissolve the DNA.
3. Close the tube and incubate for 10 minutes at room temperature.
4. Briefly vortex the tube and then do a quick spin (less than 5000xg) to concentrate the liquid at the bottom.
5. Store the suspended plasmid at -20°C. The DNA is stable for at least one year from date of shipping when stored at -20°C.

RefSeq: [NM_001001560.2](#), [NP_001001560.1](#)

RefSeq Size: 2898 bp

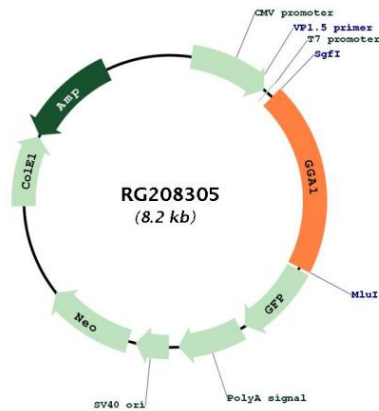
RefSeq ORF: 1659 bp

Locus ID: 26088

UniProt ID: [Q9UJY5](#)

Cytogenetics:	22q13.1
Protein Families:	Druggable Genome
Protein Pathways:	Lysosome
Gene Summary:	This gene encodes a member of the Golgi-localized, gamma adaptin ear-containing, ARF-binding (GGA) protein family. Members of this family are ubiquitous coat proteins that regulate the trafficking of proteins between the trans-Golgi network and the lysosome. These proteins share an amino-terminal VHS domain which mediates sorting of the mannose 6-phosphate receptors at the trans-Golgi network. They also contain a carboxy-terminal region with homology to the ear domain of gamma-adaptins. Multiple alternatively spliced transcript variants encoding different isoforms have been found for this gene. [provided by RefSeq, Jul 2008]

Product images:



Circular map for RG208305