

## Product datasheet for **RG208303**

### CRLF1 (NM\_004750) Human Tagged ORF Clone

#### Product data:

Product Type:	Expression Plasmids
Product Name:	CRLF1 (NM_004750) Human Tagged ORF Clone
Tag:	TurboGFP
Symbol:	CRLF1
Synonyms:	CISS; CISS1; CLF; CLF-1; NR6; zcytor5
Mammalian Cell Selection:	Neomycin
Vector:	pCMV6-AC-GFP (PS100010)
E. coli Selection:	Ampicillin (100 ug/mL)
ORF Nucleotide Sequence:	>RG208303 representing NM_004750 Red=Cloning site Blue=ORF Green=Tags(s)

TTTTGTAATACGACTCACTATAGGGCGGCCGGAATTCGTCGACTGGATCCGGTACCGAGGAGATCTGCC  
GCC**CGATCGCC**

ATGCCCGCCGCCCGGGGCCCGCCCAATCCGCGCGGGCCGCCCGTTGCTGCCCTGCTGC  
TGCTGCTCTCGCTCCTCGGGCGCCGAGCCGGATCAGGAGCCACACAGCTGTGATCAGTCCCCAGGA  
TCCACGCTTCTCATCGGCTCCTCCCTGCTGGCCACCTGCTCAGTGCACGGAGACCACCAGGAGCCACC  
GCCGAGGGCCTCTACTGGACCTCAACGGGCGCCGCTGCCCTGAGCTCTCCCGTGTACTCAACGCT  
CCACCTTGGCTCTGGCCCTGGCCAACTCAATGGGTCCAGGCAGCGGTGGGGGACAACCTCGTGTGCCA  
CGCCCGTGACGGCAGCATCCTGGCTGGCTCCTGCCTCTATGTTGGCTGCCCCAGAGAAACCCGTAAC  
ATCAGCTGCTGGTCCAAGAACATGAAGGACTTGACCTGCCGCTGGACGCCAGGGGCCACGGGGAGACCT  
TCCTCCACACCAACTACTCCCTCAAGTACAAGCTTAGGTGGTATGGCCAGGACAACACATGTGAGGAGTA  
CCACACAGTGGGGCCCCACTCCTGCCACATCCCAAGGACCTGGCTCTCTTTACGCCCTATGAGATCTGG  
GTGGAGGCCACCAACCGCTGGGCTCTGCCCGTCCGATGTAAGTACTCAGCTGGATATCCTGGATGTGGTGA  
CCACGGACCCCGCCGACGTGCACGTGAGCCGCTCGGGGCTGGAGGACAGCTGAGCGTGCCTG  
GGTGTCCGACCCCGCCCAAGGATTTCTCTTTCAAGCCAAATACCAGATCCGCTACCGAGTGGAGGAC  
AGTGTGGACTGGAAGGTGGTGGACGATGTGAGCAACCAGACCTCCTGCCGCTGGCGCCCTGAAACCCG  
GCACCGTACTTTCGTGCAAGTGCCTGCAACCCCTTTGGCATCTATGGCTCCAAGAAAGCCGGGATCTG  
GAGTGAGTGGAGCCACCCACAGCCGCTCCACTCCCCGAGTGAAGCGCCGGGCCGGGGCGGGGGCG  
TGCGAACC CGGGGGGAGAGCCGAGCTCGGGCCGGTGCGGCGGAGCTCAAGCAGTTCCTGGGCTGGC  
TCAAGAAGCAGCGTACTGCTCCAACCTCAGCTTCCGCTCTACGACCAGTGGCGAGCCTGGATGCAGAA  
GTCGCACAAGACCCGCAACCAGGACGAGGGGATCTGCCCTCGGGCAGACGGGGCACGGCGAGAGTCTCT  
GCCAGA

AGCGGACCGACGCGTACGCGGCCGCTCGAG - GFP Tag - GTTTAA



[View online »](#)

**Protein Sequence:** >RG208303 representing NM\_004750  
 Red=Cloning site Green=Tags(s)

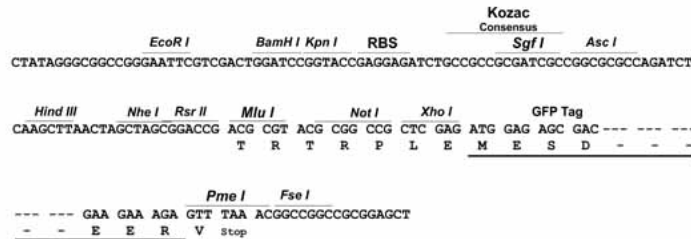
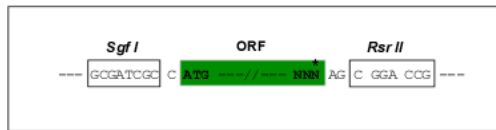
MPAGRRGPAAQSARRPPPLPLLLLLCVLGAPRAGSGAHTAVISPDPTLLIGSSLLATCSVHGDPPGAT  
 AEGLYWTLNGRRLPPELSRVLNASTLALALANLNGSRQSGDNLVCHARDGSILAGSCLYVGLPPEKPVN  
 ISCWSKNMKDLTCRWTPGAHGETFLHTNYSKYLKRWYQDNTCEEYHTVGPHSCHIPKDLALFTPYEIW  
 VEATNRLGSARSDVLTLDILDVVTDDPPDVHVS RVGGLEDQLSVRWVSPALKDFLFQAKYQIRYRVED  
 SVDWKVYDDVSNQTSCLRALGKPGTVYFVQVRCNPFGIYGSKKAGIWEWSHPTAASTPRSERPGGGGA  
 CEPRGGEPSGPRRELKQFLGWLKKHAYCSNLSFRLYDQWRAWMQSHKTRNQDEGILPSGRRGTARGP  
 AR

SGPTRTRRLE - GFP Tag - V

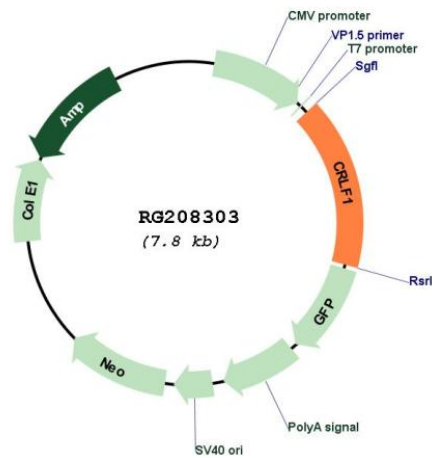
**Restriction Sites:** SgfI-RsrII

**Cloning Scheme:**

Cloning sites used for ORF Shuttling:



**Plasmid Map:**



**ACCN:** NM\_004750

<b>ORF Size:</b>	1266 bp
<b>OTI Disclaimer:</b>	The molecular sequence of this clone aligns with the gene accession number as a point of reference only. However, individual transcript sequences of the same gene can differ through naturally occurring variations (e.g. polymorphisms), each with its own valid existence. This clone is substantially in agreement with the reference, but a complete review of all prevailing variants is recommended prior to use. <a href="#">More info</a>
<b>OTI Annotation:</b>	This clone was engineered to express the complete ORF with an expression tag. Expression varies depending on the nature of the gene.
<b>Components:</b>	The ORF clone is ion-exchange column purified and shipped in a 2D barcoded Matrix tube containing 10ug of transfection-ready, dried plasmid DNA (reconstitute with 100 ul of water).
<b>Reconstitution Method:</b>	<ol style="list-style-type: none"><li>1. Centrifuge at 5,000xg for 5min.</li><li>2. Carefully open the tube and add 100ul of sterile water to dissolve the DNA.</li><li>3. Close the tube and incubate for 10 minutes at room temperature.</li><li>4. Briefly vortex the tube and then do a quick spin (less than 5000xg) to concentrate the liquid at the bottom.</li><li>5. Store the suspended plasmid at -20°C. The DNA is stable for at least one year from date of shipping when stored at -20°C.</li></ol>
<b>RefSeq:</b>	<a href="#">NM_004750.5</a>
<b>RefSeq Size:</b>	1804 bp
<b>RefSeq ORF:</b>	1269 bp
<b>Locus ID:</b>	9244
<b>UniProt ID:</b>	<a href="#">O75462</a>
<b>Cytogenetics:</b>	19p13.11
<b>Protein Families:</b>	Druggable Genome, Secreted Protein
<b>Gene Summary:</b>	This gene encodes a member of the cytokine type I receptor family. The protein forms a secreted complex with cardiotrophin-like cytokine factor 1 and acts on cells expressing ciliary neurotrophic factor receptors. The complex can promote survival of neuronal cells. Mutations in this gene result in Crisponi syndrome and cold-induced sweating syndrome. [provided by RefSeq, Oct 2009]