

Product datasheet for **RG208267**

Clathrin heavy chain (CLTC) (NM_004859) Human Tagged ORF Clone

Product data:

Product Type:	Expression Plasmids
Product Name:	Clathrin heavy chain (CLTC) (NM_004859) Human Tagged ORF Clone
Tag:	TurboGFP
Symbol:	Clathrin heavy chain
Synonyms:	CHC; CHC17; CLH-17; CLTCL2; Hc; MRD56
Mammalian Cell Selection:	Neomycin
Vector:	pCMV6-AC-GFP (PS100010)
E. coli Selection:	Ampicillin (100 ug/mL)
ORF Nucleotide Sequence:	>RG208267 representing NM_004859 Red=Cloning site Blue=ORF Green=Tags(s)

TTTTGTAATACGACTCACTATAGGGCGGCCGGAATTCGTCGACTGGATCCGGTACCGAGGAGATCTGCC
GCC**CGATCGCC**

ATGGCCAGATTCTGCCAATTCGTTTTTCAGGAGCATCTCCAGCTCCAGAACCTGGGTATCAACCCAGCAA
ACATTGGCTTCAGTACCCTGACTATGGAGTCTGACAAATTCATCTGCATTAGAGAAAAAGTAGGAGAGCA
GGCCAGGTGGTAATCATTGATATGAATGACCCAAGTAATCCAATTCGAAGACCAATTTCCAGCAGACAGC
GCCATCATGAATCCAGCTAGCAAAGTAATTGCACTGAAAGCTGGGAAAACCTTTCAGATTTTTAACATTG
AAATGAAAAGTAAAATGAAGGCTCATACCATGACTGATGATGTCACCTTTTGGAAATGGATCTCTTTGAA
TACGGTTGCTCTTGTACGGATAATGCAGTTTATCACTGGAGTATGGAAGGAGAGTCTCAGCCAGTGAAA
ATGTTTGTATCGCCATTCTAGCCTTGCAAGGTGCCAGATTATCAATTACCGTACAGATGCAAAACAAAAGT
GGTTACTTCTGACTGGTATATCTGCACAGCAAAAATCGTGTGGTGGGAGCTATGCAGCTATATTCTGTAGA
TAGGAAAGTGTCTCAGCCATTGAAGGACATGCAGCTAGCTTTGCACAGTTAAGATGGAAGGAAATGCA
GAAGAATCAACGTTATTTTGTTCAGTTCGGGGCAAGCTGGAGGGAAGTTACATATTATTGAAGTTG
GCACACCACCTACAGGGAACAGCCCTTCCAAGAAGGCAGTGGATGTCTTCTTCCAGCAAGCACA
AAATGATTTTCTGTTGCAATGCAGATCAGTGAAGCATGATGTGGTGTCTTGATAACCAAGTATGGT
TATATCCACCTCTATGATCTTGAGACTGGTACCTGCATCTCATGAATAGAATCAGTGGAGAAACAATTT
TTGTTACTGCACCTCATGAAGCCACAGCTGGAATAATTGGAGTAAACAGAAAGGGACAAGTTCTGTCAGT
GTGTGTGGAAGAAGAAAACATAATTCCTTACATACCAATGTTCTACAAAATCCTGATTTGGCTCTGAGA
ATGGCTGTACGTAATAACTTAGCCGGTGTGAAGAACTCTTGCCCGAAATTTAATGCTCTTTTGCC
AGGGAAATTAICTCGGAGGACAGCAAGGTGGCTGCTAATGCACCAAGGGAATTTCTCGTACTCCAGACAC
TATCCGTCGGTTCAGAGTGTCCAGCCAGCCAGGTCAAACCTCTCTACTTCACTTCACTTTGGTATC
CTTTTGGACCAGGACAGCTCAACAAATACGAATCCTTAGAGCTTTGTAGGCCTGTACTTCAGCAAGGGC
GAAAACAGCTTTTGGAGAAATGGTTAAAAGAAGATAAGCTGGAATGTTCTGAAGAACTGGGTGATCTTGT
GAAATCTGTGGACCCTACATTGGCACTTAGTGTGTACCTAAGGGCTAACGTCCCAATAAAGTCATTGAG



[View online >](#)

TGCTTTGCAGAAACAGGTCAAGTCCAAAAGATTGTTTTATATGCTAAAAAAGTTGGATACACTCCAGATT
 GGATATTTCTGCTGAGAAATGTAATGCGAATCAGTCCAGATCAGGGACAGCAGTTTGCCCAAATGTTAGT
 TCAAGATGAAGAGCCTCTTGCTGACATCACACAGATTGTAGATGTCTTTATGGAATACAATCTAATTCAG
 CAGTGTACTGCATTCTTGCTTGATGCTCTGAAGAATAATCGCCCATCTGAAGGTCCTTTACAGACGCGGT
 TACTTGAGATGAACCTTATGCATGCGCCTCAAGTTGCAGATGCTATTCTAGGCAATCAGATGTTACACACA
 TTATGACCGGGCTCATATTGCTCAACTGTGTGAAAAGGCTGGCCTACTGCAGCGTGCATTAGAACAATTC
 ACTGATTTATATGATATAAAACGTGCAGTGGTTCACACCCATCTCTTAACCCCTGAGTGGTTAGTCAACT
 ACTTTGGTTCCTTATCAGTAGAAGACTCCCTAGAATGTCTCAGAGCCATGCTGTCTGCCAACATCCGTCA
 GAATCTGCAGATTTGTGTTCAAGGTTCTCTAAATATCATGAACAACCTGTCAACTCAGTCTCTGATTGAA
 CTTTTTGAATCTTTCAAGAGTTTTGAAGGTCTCTTTATTTTCTGGGATCCATTGTTAACTTTAGCCAGG
 ACCCAGATGTGCACCTTTAAATATATTCAGGCAGCTTGCAAGACTGGGCAAATCAAAGAAGTAGAAAAGAT
 CTGTAGAGAAAGCAACTGCTACGATCCTGAGCGAGTCAAGAAATTTCTTAAGGAAGCAAACTAACAGAT
 CAGCTACCACTTATCATTGTGTGTGATCGATTTGACTTTGTCCATGATTTGGTGTCTATTTATATAGAA
 ATAATCTTCAAAGTATATAGAGATATATGTACAGAAGGTGAATCCAAGTCGACTTCTGTAGTTATTGG
 AGGATTACTTGATGTTGACTGTTCTGAAGATGTCATAAAAACTTGATTCTTGTGTAAGAGGTCAATTC
 TCTACTGATGAGCTTGTGCTGAGGTTGAAAAAGAAACAGATTGAAACTGCTTCTGCCTTGGCTAGAGG
 CCAGAATTCATGAGGGCTGTGAGGAGCCTGCTACTCACAATGCCTTAGCCAAAATCTACATAGACAGTAA
 TAACAACCCGGAGAGATTTCTTCGTGAAAAATCCCTACTATGACAGTCGCGTTGTTGGAAAGTATTGTGAG
 AAGAGAGATCCACATCTGGCCTGTGTGCTTATGAACGTGGCCAAATGTGATCTGGAACCTTATTAATGTTT
 GCAATGAGAATCCCTCTTCAAAGTCTTCTCGCTACCTGGTACGTGAAAGGATCCAGAATTTGGGG
 CAGCGTGTCTGGAAGCAATCCTTACAGGAGACCCCTAATTGACCAGGTTGTACAAACAGCTTTGTCT
 GAGACTCAGGACCCTGAAGAAGTGTGAGTAACTGTAAGGCTTTCATGACTGCAGACCTTCTAATGAAC
 TCATTGAACTGCTGGAGAAAATTTGCTTGAATACTCTGATTCAGTGAACACAGGAATTCGAAAACCT
 CCTTATCCTCACTGCAATTAAGGCTGACCGTACACGTGTTATGGAGTATATTAACCGCCTGGATAATTAT
 GATGCCCCAGATATTGCCAATATCGCCATCAGCAATGAGCTGTTTGAAGAAGCATTGGCCATTTCCGGA
 AATTTGATGTCAATACTTCAGCAGTTCAGGTCTTAATTGAGCATATTGGAACCTGGATCGGGCATATGA
 GTTTGCTGAACGTTGCAATGAACCTGCGGTCTGGAGTCAACTTGCAAAAGCCAGTTGCAGAAAGGAATG
 GTGAAAGAAGCCATTGATTTTATCAAAGCAGATGATCCTTCTCCTACATGGAAGTTGTTCCAGGCTG
 CCAATACTAGTGGAACTGGGAAGAACTGGTGAAGTACTGCAGATGGCCCGTAAAGAAGGCTCGAGAGTC
 CTATGTGGAGACAGAAGTATTCGCACTGGCTAAAACAACCCGCTTGCAGAGTTAGAAGAATTTATC
 AATGGACCAAATATGCTCATATCCAACAAGTTGGTGACCGTTGTTATGATGAAAAATGTATGATGCTG
 CTAAGTTGTTGTACAATAATGTTTCCAATTTTGGACGTTTGGCATCTACCCTGGTTCACCTGGGTGAATA
 TCAGGCAGCTGTTGATGGGGCTAGGAAAGCTAACAGTACTCGAACATGGAAGAGGTTGCTTCCGCTGT
 GTAGATGGGAAAGAATCCGCTCTTGCTCAGATGTGTGGACTTCATATTGTTGTACATGCAGATGAATTAG
 AAGAACTTATCAACTACTATCAGGATCGTGCTATTTTGAAGAGCTGATCACCATGTTGGAAGCAGCACT
 GGGACTTGAGCGAGCTCACATGGGAATGTTTACTGAATTAGCTATTCTATACTCTAAATTAAGCCTCAG
 AAAATGAGGGAGCACCTGGAGCTGTTCTGGTCTAGAGTGAATATCCCAAGGTGCTAAGAGCTGCAGAAC
 AAGCTCATCTTTGGGCAGAACTGGTGTGTTTGTATGACAAGTATGAAGAATATGATAATGCCATAATTC
 CATGATGAATCATCCAAGTATGCTGCAAGAAAGGGCAATTCAGAGATATCATTACCAAGTTGCCAAT
 GTGGAATACTACAGAGCAATACAGTTCTACTTGAATTCAGCCTCTGTTGTTAAATGATTTGCTGA
 TGGTGCTGTCTCCACGGTTGGATCACACTCGTGCAGTCAATTATTTAGCAAGGTTAAACAGCTACCACT
 GGTGAAACCGTATTTGCGTTCAGTTCAGAACCATAAACAATACTGTGAATGAATCATTGAACAATCTT
 TTTATTACAGAAGAAGATTATCAGGCTCTGCAACATCAATAGATGCTTATGACAACCTTTGACAATATCT
 CGCTTGCTCAGCGTTTGGAAAAACATGAACTCATTGAGTTCAGGAGAAATGCTGCTTATCTCTTCAAAGG
 CAACAATCGTGGAAACAGAGTGTAGAGCTGTGCAAGAAAGACAGCCTTACAAGGATGCAATGCAGTAT
 GCTTCTGAATCTAAAGATACTGAATTGGCTGAAGAAGTCTGCAAGTGGTTTTTGCAGGAAGAAAAAGAG
 AGTGCTTTGGAGCTTGTCTGTTTACCTGTTACGATCTTTTAAAGCCAGATGTCGCTTAGAACTGCATG
 GAGGCACAATATCATGGATTTTGCATGCCCTATTTTATCCAGGTCATGAAGGAGTACTTGACAAAGGTG
 GATAAATTAGATGCTTCAGAATCACTGAGAAAAGAAGAACAAGCTACAGAGACACAACCCATTGTTT
 ATGGTCAGCCCCAGTTGATGCTGACAGCAGGACCCAGTGTGCGCTCCCTCCCCAGGCACCTTTTGGTTA
 TGGTTATACCGCACCCCGTATGGACAGCCACAGCCTGGCTTTGGGTACAGCATG

ACGCGTACGCGGCCGCTCGAG - GFP Tag - GTTTAA

Protein Sequence:

>RG208267 representing NM_004859
 Red=Cloning site Green=Tags(s)

MAQILPIRFQHLQLQNLGINPANIGFSTLTMESDKFICIREKVGQAQVVIIDMNDPSNPIRRPISADS
 AIMNPASKVIALKAGKTLQIFNIEMKSKMKAHTMTDDVTFWKWISLNTVALVTDNAVYHWSMEGESQPVK
 MFDHRSSLAGCQIINYRTDAKQKWLTLTGISAQQNRVVGAMQLYSVDRKVSQPIEGHAASFAQFKMEGNA
 EESTLFCFAVRGQAGGKLHIEVGTPTGNQPPFKAVDVFFPPEAQNDFPVAMQISEKHDVVFLITKYG
 YIHLVDLETGTCIYMNRISGETIFVTAPHEATAGIIGVNRKGQVLSVCVEEENIIPYITNVLQNPDLALR
 MAVRNLAGAEELFARKFNALFAQGNYSAAKVAANAPKGI LRTPDTIRRFQSVPAQPGQTSPLLQYFGI
 LLDQGLNKYESLELCPVLLQQGRKQLEKWLKEDKLECEELGDLVKSVDPTLALSVYLRANVPNKVIQ
 CFAETGQVQKIVLYAKKVGYPDWIFLLRNVMRISPDQGGQFAQMLVQDEEPLADITQIVDVFMENLIQ
 QCTAFLDLALKNNRPSGEP LQTRLLEMNLMHAPQVADAILGNQMFTHYDRAHIAQLCEKAGLLQRALEHF
 TDLYDIKRAVVHTHLLNPEWL VNYFGSLSVEDSLECLRAMLSANIRQNLQICVQVASKYHEQLSTQSLIE
 LFESFKSFEGLFYFLGSI VNFSDQDPDVHFYIQAACKTGQI KEVERICRESNCYDPERVKNFLKEAKLTD
 QLPLIIVCDFDFVHDLVLYLRNNLQKYIEIYVQKVNPSRLPVVIGLLD VDCSEDVIKNLILVVRGQF
 STDELVAEVEKRNLKLLL PWLEARIHEGCEEPATHNALAKIYIDSNNNPERFLRENPPYDSRVVGYKCE
 KRDPHLACVAYERGQCDELEINVCNENSLFKLSRYL VRRKDP ELWGSVLLSNPYRRPLIDQVVQTALS
 ETQDPEEVSVTVKAFMTADLPNELIELLEKIVLDNSVFSEHRNLQNL LILTAIKADRTRVMEYINRLDNY
 DAPDIANIAISNELFEEAF AIFRKFDVNTSAVQV LIEHIGNLDRA YEFAERCNEPAVWSQLAKAQLQKGM
 VKEAIDSYIKADDPSSYMEVVQAANTSGNWEELVKYLQMARKKARESYVETELIFALAKTNRLAELEEFI
 NGPNNAHIQQVGDRCYDEKMYDAAKLLYNNVSNFGRLASTLVHLGEYQAAVDGARKANSTRTWKEVCFAC
 YDGKEFRLAQMCGLHIVVHADELEELINYYQDRGYFEELITMLEAALGLERAHMGMFTELA ILYSKFKPQ
 KMREHLELFWSRVNIPKVLRAAEQHLWAEVFLYDKYEEYDNAIITMMNHPTDAWKEGQFKDIITKVAN
 VELYYRAIQFYLEFKPLLLNDLLMVLSPRLDHTRAVNYFSKVKQLPLVKPYLRSVQNHNNKSVNESLNNL
 FITEEDYQALRTSIDAYDNFDNISLAQRLEKHELIEFRRIAAYLFGKNNRWKQSVELCKKDLSYKDAMQY
 ASESKDTELAEELLQWFLQEERECFGACLFTCYDLLRPDVVLETAWRHNIMDFAMPYFIQVMKEYLTKV
 DKLDASESLRKEEEQATETQPIVYGQPQLMLTAGPSVAVPPQAPFGYGYTAPPYGPQPQFGFGYSM

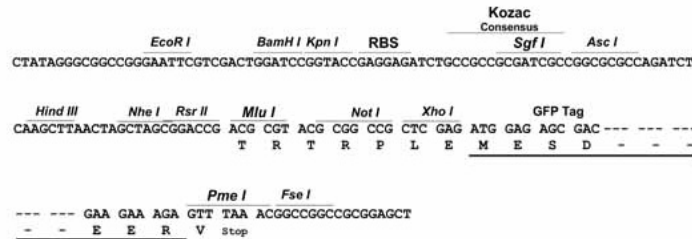
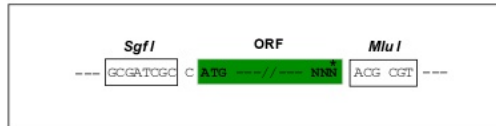
TRTRPLE - GFP Tag - V

Restriction Sites:

Sgfl-MluI

Cloning Scheme:

Cloning sites used for ORF Shutting:

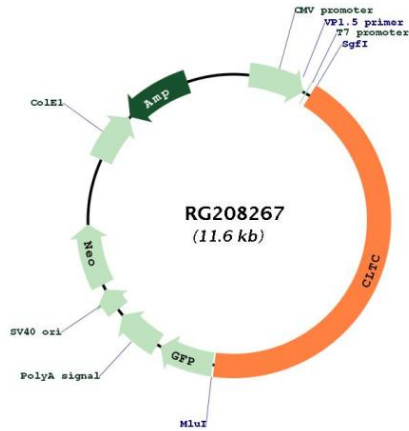


ACCN:

NM_004859

ORF Size:	5025 bp
OTI Disclaimer:	<p>Due to the inherent nature of this plasmid, standard methods to replicate additional amounts of DNA in E. coli are highly likely to result in mutations and/or rearrangements. Therefore, OriGene does not guarantee the capability to replicate this plasmid DNA. Additional amounts of DNA can be purchased from OriGene with batch-specific, full-sequence verification at a reduced cost. Please contact our customer care team at custsupport@origene.com or by calling 301.340.3188 option 3 for pricing and delivery.</p> <p>The molecular sequence of this clone aligns with the gene accession number as a point of reference only. However, individual transcript sequences of the same gene can differ through naturally occurring variations (e.g. polymorphisms), each with its own valid existence. This clone is substantially in agreement with the reference, but a complete review of all prevailing variants is recommended prior to use. More info</p>
OTI Annotation:	This clone was engineered to express the complete ORF with an expression tag. Expression varies depending on the nature of the gene.
Components:	The ORF clone is ion-exchange column purified and shipped in a 2D barcoded Matrix tube containing 10ug of transfection-ready, dried plasmid DNA (reconstitute with 100 ul of water).
Reconstitution Method:	<ol style="list-style-type: none"> 1. Centrifuge at 5,000xg for 5min. 2. Carefully open the tube and add 100ul of sterile water to dissolve the DNA. 3. Close the tube and incubate for 10 minutes at room temperature. 4. Briefly vortex the tube and then do a quick spin (less than 5000xg) to concentrate the liquid at the bottom. 5. Store the suspended plasmid at -20°C. The DNA is stable for at least one year from date of shipping when stored at -20°C.
RefSeq:	NM_004859.4
RefSeq Size:	6541 bp
RefSeq ORF:	5028 bp
Locus ID:	1213
UniProt ID:	Q00610
Cytogenetics:	17q23.1
Domains:	Clathrin, Clathrin_propel
Protein Pathways:	Endocytosis, Huntington's disease, Lysosome
Gene Summary:	<p>Clathrin is a major protein component of the cytoplasmic face of intracellular organelles, called coated vesicles and coated pits. These specialized organelles are involved in the intracellular trafficking of receptors and endocytosis of a variety of macromolecules. The basic subunit of the clathrin coat is composed of three heavy chains and three light chains. [provided by RefSeq, Jul 2008]</p>

Product images:



Circular map for RG208267