

Product datasheet for **RG208239**

GFM1 (NM_024996) Human Tagged ORF Clone

Product data:

Product Type:	Expression Plasmids
Product Name:	GFM1 (NM_024996) Human Tagged ORF Clone
Tag:	TurboGFP
Symbol:	GFM1
Synonyms:	COXPD1; EFG; EFG1; EFGM; EGF1; GFM; hEFG1; mtEF-G1
Mammalian Cell Selection:	Neomycin
Vector:	pCMV6-AC-GFP (PS100010)
E. coli Selection:	Ampicillin (100 ug/mL)



[View online »](#)

**ORF Nucleotide
Sequence:**

>RG208239 representing NM_024996
 Red=Cloning site Blue=ORF Green=Tags(s)

TTTTGTAATACGACTCACTATAGGGCGGCCGGAATTCGTCGACTGGATCCGGTACCGAGGAGATCTGCC
 GCC**CGGATCGCC**

ATGAGACTCCTGGGAGCTGCAGCCGTCGCGGCTCTGGGGCGCGGAAGGGCCCCGCCTCCCTAGGCTGGC
 AGAGGAAGCAGGTTAATTGGAAGCCTGCCGATGGTCTTCATCAGGGGTATTCCCTAATGAAAAATACG
 AAATATTGGAATCTCAGCTCACATTGATTCTGGGAAAACACATTAACAGAACGAGTCCTTTACTACACT
 GGCAGAATTGCAAAGATGCATGAGGTGAAAGTAAAGTGGAGTTGGTGTGTCATGGATTCCATGGAAC
 TAGAGAGACAAAGAGGAATCACTATTCAGTCAGCAGCCACTTACACCATGTGGAAGATGTCAATATTAA
 CATTATAGATACTCCTGGGCATGTGGACTTCACAATAGAAGTGGAAAGGGCCCTGAGAGTGTGGATGGT
 GCAGTCTTGTCTCTGTGCTGTGGAGGGGTACAGTGCCAGACCATGACTGTCAATCGTCAGATGAAGC
 GCTACAACGTTCCGTTTCTAAGTTTATTAACAAATTGGACCGAATGGGCTCCAACCCAGCCAGGGCCCT
 GCAGCAAATGAGGTCTAACTAAATCATAATGCAGCGTTTATGCAGATACCCATGGGTTTGGAGGTAAT
 TTTAAAGGTATTGTAGATCTTATTGAGGAACGAGCCATCTATTTTGATGGAGACTTTGGTCAGATTGTC
 GATATGGTGAGATTCCAGCTGAATTAAGGGCGCGGCCACTGACCACCGCAGGAGCTAATTGAATGTGT
 TGCCAATTCAGATGAACAGCTTGGTGAGATGTTTCTGGAAGAAAAATCCCTCGATTTCTGATTTAAAG
 CTAGCAATTCGAAGAGCTACTCTGAAAAGATCATTTACTCCTGTATTTTGGGAAGCGCCTTGAAGAACA
 AAGGAGTTCAGCCTCTTTTAGATGCTGTTTTAGAATACCTCCCAAATCCATCTGAAGTCCAGAATATGC
 TATTCTCAATAAAGAGGATGACTCAAAAGAGAAAAACAAATCCTAATGAACTCCAGTAGAGACAATTCC
 CACCCATTTGTAGGCCTGGCTTTTAAACTGGAGGTAGGTCGATTTGGACAATTACTTATGTTTCGAGTT
 ATCAGGGAGAGCTAAAGAAGGGTGACACCATCTAACAACAAGGACAAGAAAGAAAGTACGTTTGAACG
 GCTGGCTCGCATGCATGCCGACATGATGGAGGATGTTGAGGAAGTATATGCCGGAGACATCTGTGCATTG
 TTTGGCATTGACTGTGCTAGTGGAGACATTCACAGACAAAGCCAACAGCGGCCTTTCTATGGAGTCAA
 TTCATGTTCTGTCTGTCAATTAAGCAATGAAGCCTTCTAACAAGAACGATCTGGAAAAATTTTC
 AAAAGGTATTGGCAGGTTTACAAGAGAAGATCCCACATTTAAAGTATACTTTGACACTGAGAACAAGAG
 ACAGTTATATCTGGAATGGGAGAATTACACCTGGAATCTATGCTCAGAGGCTGGAAGAGAGATGGCT
 GTCCTTGATCACAGGAAAGCCAAAAGTTGCCTTTGAGAGACCATTACTGCCCTGTCCCGTTTGACTT
 TACACATAAAAAACAATCAGGTGGTGCAGGCCAGTATGGAAAAGTAATAGGTGTCCTGGAGCCTCTGGAC
 CCAGAGGACTACACTAAATTGGAATTTTTCAGATGAAACATTCGGATCAAATATTCCAAGCAGTTTGTGC
 CTGCTGTAGAAAAGGGGTTTTAGATGCCTGCGAGAAGGGCCCTTTTCTGGTCAACAAGCTCTCTGGGCT
 CCGGTTTGTCTGCAAGATGGAGCACACCACATGGTTGATTCTAATGAAATCTCTTTTCATCCGAGCAGGA
 GAAGGTGCTCTTAAACAAGCCTTGGCAAATGCAACATTATGATTTCTTGAACCTATTATGGCTGTGGAAG
 TTGTAGCTCCAAATGAATTTTCAGGGACAAGTAATTGCAGGAATTAACCGACGCCATGGGTAATCACTGG
 GCAAGATGGAGTTGAGGACTATTTTACTGTATGCAGATGTCCCTCTAATGATATGTTTGGTTATTCC
 ACTGAACCTTAGGTCATGCACAGAGGAAAGGGAGAATACACAATGGAGTATAGCAGGTATCAGCCATGTT
 TACCATCCACACAAGAAGACGTCATTAATAAGTATTTGGAAGCTACAGGTCAACTTCTGTAAAAAAGG
 AAAAGCCAAGAAC

AG**CGGACCC**ACGCGTACGCGGCCGCTCGAG - GFP Tag - GTTTAA

Protein Sequence: >RG208239 representing NM_024996
Red=Cloning site Green=Tags(s)

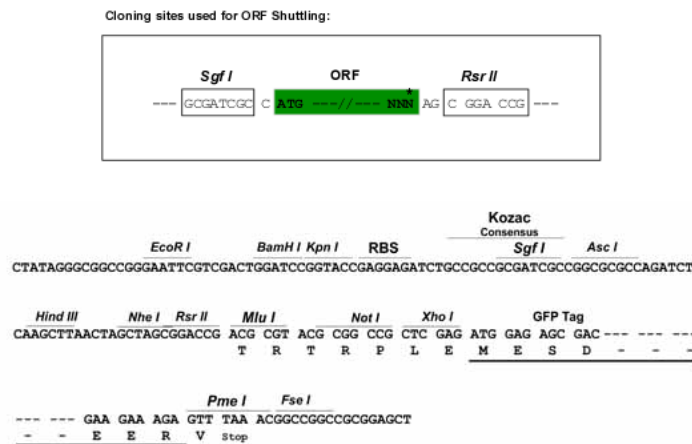
```

MRLLGAAVAALGRGRAPASLGWQRKQVNWKACRWSSSGVIPNEKIRNIGISAHIDSGKTTLTERVLYYT
GRIAKMHEVKGKDGVGAVMDSMELERQGITIQSAATYTMWKDVNINIIDTPGHVDFTIEVERALRVLGDG
AVLVLCAVGGVQCQTMTVNRQMKRYNVPFLTFINKLDRMGSNPARALQQMRSKLNHNAAFMQIPMGLEGN
FKGIVDLIEERAIYFDGDFGQIVRYGEIPAELRAAADHRQELIECVANSDEQLGEMFLEEKIPISIDLK
LAIRRATLKRSTFPVFLGSALKNKGVQPLLDVLEYL PNPSEVQNYAILNKEDDSKEKTKILMNSSRDNS
HPFVGLAFKLEVRFGQLTYVRSYQGELKKGDTIYNTRTRKRVRLQRLARMHADMMEDVEEVYAGDICAL
FGIDCASGDTFTDKANSGLSMESIHPDPVISIAMKPSNKNLLEKFSKGI GRFTREDPTFKVYFDTENKE
TVISGMGELHLEIYAQRLEREYGCPCITGPKVAFRETITAPVPFDFTHKKQSGGAGQYGVIGVLEPLD
PEDYTKLEFSDETFGSNIPKQFVPAVEKGF LDACEKGPLSGHKL SGLRFVLQDGAHHMVSNEISFIRAG
EGALKQALANATLCILEPIMAVEVVPNEFQGGQVIAGINRRHGVI TGDQGVEDYFTLYADVPLNDMFGYS
TELRSCTEGKGEYTMESRYQPCLPSTQEDVINKYLEATGQLPVKKGKAKN
    
```

SGPTRRRLE - GFP Tag - V

Restriction Sites: SgfI-RsrII

Cloning Scheme:



ACCN: NM_024996

ORF Size: 2253 bp

OTI Disclaimer: The molecular sequence of this clone aligns with the gene accession number as a point of reference only. However, individual transcript sequences of the same gene can differ through naturally occurring variations (e.g. polymorphisms), each with its own valid existence. This clone is substantially in agreement with the reference, but a complete review of all prevailing variants is recommended prior to use. [More info](#)

OTI Annotation: This clone was engineered to express the complete ORF with an expression tag. Expression varies depending on the nature of the gene.

Components: The ORF clone is ion-exchange column purified and shipped in a 2D barcoded Matrix tube containing 10ug of transfection-ready, dried plasmid DNA (reconstitute with 100 ul of water).

Reconstitution Method:

1. Centrifuge at 5,000xg for 5min.
2. Carefully open the tube and add 100ul of sterile water to dissolve the DNA.
3. Close the tube and incubate for 10 minutes at room temperature.
4. Briefly vortex the tube and then do a quick spin (less than 5000xg) to concentrate the liquid at the bottom.
5. Store the suspended plasmid at -20°C. The DNA is stable for at least one year from date of shipping when stored at -20°C.

Note: Plasmids are not sterile. For experiments where strict sterility is required, filtration with 0.22um filter is required.

RefSeq: [NM_024996.7](#)

RefSeq Size: 3468 bp

RefSeq ORF: 2256 bp

Locus ID: 85476

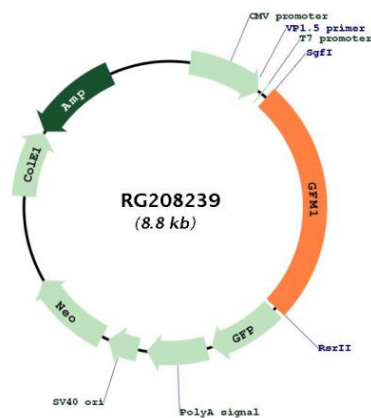
UniProt ID: [Q96RP9](#)

Cytogenetics: 3q25.32

Domains: EFG_C, GTP_EFTU, GTP_EFTU_D2, EFG_IV

Gene Summary: Eukaryotes contain two protein translational systems, one in the cytoplasm and one in the mitochondria. Mitochondrial translation is crucial for maintaining mitochondrial function and mutations in this system lead to a breakdown in the respiratory chain-oxidative phosphorylation system and to impaired maintenance of mitochondrial DNA. This gene encodes one of the mitochondrial translation elongation factors. Its role in the regulation of normal mitochondrial function and in different disease states attributed to mitochondrial dysfunction is not known. [provided by RefSeq, Jul 2008]

Product images:



Circular map for RG208239