

Product datasheet for **RG208192**

DNMT3A (NM_175629) Human Tagged ORF Clone

Product data:

Product Type:	Expression Plasmids
Product Name:	DNMT3A (NM_175629) Human Tagged ORF Clone
Tag:	TurboGFP
Symbol:	DNMT3A
Synonyms:	DNMT3A2; HESJAS; M.HsaIIIA; TBRS
Mammalian Cell Selection:	Neomycin
Vector:	pCMV6-AC-GFP (PS100010)
E. coli Selection:	Ampicillin (100 ug/mL)



[View online »](#)

ORF Nucleotide Sequence:

>RG208192 representing NM_175629.

Blue=ORF Red=Cloning site Green=Tag(s)

```

GCTCGTTTAGTGAACCGTCAGAATTTTGTAAACGACTCACTATAGGGCGGCCGGGAATTCGTGACTG
GATCCGGTACCGAGGAGATCTGCCGCCACGATCGCC
ATGCCCGCCATGCCCTCCAGCGGCCCGGGACACCAGCAGCTCTGCTGCCGAGCGGGAGGAGACCGA
AAGGACGGAGAGGAGCAGGAGGAGCCCGTGGCAAGGAGGAGCGCCAAGAGCCCAGCACCGCACGG
AAGGTGGGGCGGCTGGGAGGAAGCGCAAGCACCCCGGTGAAAGCGGTGACACGCCAAAGACCCCT
GCGGTGATCTCCAAGTCCCCATCCATGGCCCAGGACTCAGGCGCCTCAGAGCTATTACCCAATGGGGAC
TTGGAGAAGCGGAGTGAGCCCCAGCCAGAGGAGGGGAGCCCTGCTGGGGGCAGAAGGGCGGGGCCCA
GCAGAGGGAGAGGGTGCAGCTGAGACCCTGCCTGAAGCCTCAAGAGCAGTGGAAAATGGTGTGCACC
CCCAAGGAGGGCCGAGGAGCCCTGCAGAAGCGGGCAAAGAACAGAAGGAGACCAACATCGAATCCATG
AAAATGGAGGGCTCCCGGGCGGCTGCCGGGTGGCTTGGGTGGGAGTCCAGCCTCCGTACGGGCC
ATGCCGAGGCTCACCTTCCAGGCGGGGACCCCTACTACATCAGCAAGCGCAAGCGGACGAGTGGCTG
GCACGCTGAAAAGGGAGGCTGAGAAGAAAGCCAAAGTCAATGCAGGAATGAATGCTGTGGAAGAAAAC
CAGGGGCCCGGGAGTCTCAGAAGGTGGAGGAGGCCAGCCCTCCTGCTGTGCAGCAGCCACTGACCCC
GCATCCCCCACTGTGGCTACCACGCTGAGCCCGTGGGGTCCGATGCTGGGGACAAGAATGCCACAAA
GCAGGCGATGACGAGCCAGAGTACGAGGACGGCCGGGGCTTTGGCATTGGGGAGCTGGTGTGGGGAAA
CTGCGGGGCTTCTCCTGGTGGCCAGGCCGATTGTGTCTTGGTGGATGACGGGCCGGAGCCGAGCAGCT
GAAGGCACCCGCTGGGTGATGTGGTTCGGAGACGGCAAATTCAGTGGTGTGTGTTGAGAAGCTGATG
CCGCTGAGCTCGTTTTGCAGTGCCTCCACCAGGCCACGTACAACAAGCAGCCATGTACCGCAAAGCC
ATCTACGAGGTCCTGCAGGTGGCCAGCAGCCGCGGGGAAGCTGTTCCCGGTGTGCCACGACAGCGAT
GAGATGACACTGCCAAGGCCGTGGAGGTGCAGAACAAGCCCATGATTGAATGGGCCCTGGGGGCTTC
CAGCCTTCTGGCCCTAAGGGCCTGGAGCCACCAGAAGAAGAGAAGAATCCCTACAAAGAAGTGTACACG
GACATGTGGTGGAACCTGAGGCAGTGCCTACGCCACCTCCACCAGCCAAAAAGCCCGGAAGAGC
ACAGCGGAGAAGCCAAAGGTCAAGGAGATTATTGATGAGCGCACAAAGAGCGGCTGGTGTACGAGGTG
CGGCAGAAGTGCCGAACATTGAGGACATCTGCATCTCCTGTGGGAGCCTCAATGTTACCCTGGAACAC
CCCCTCTCGTTGGAGGAATGTGCCAAACTGCAAGAAGTGTCTTCTGGAGTGTGCGTACCAGTACGAC
GACGACGGCTACCAGTCTACTGCACCATCTGCTGTGGGGCCGTGAGGTGCTCATGTGCCGAAACAAC
AACTGCTGCAGGTGCTTTTTCGTGGAGTGTGTGGACCTCTTGGTGGGGCCGGGGCTGCCAGGCAGCC
ATTAAGGAAGACCCCTGGAAGTGTACATGTGCGGGCACAAAGGTACCTACGGGCTGCTGCGGCGGCGA
GAGGACTGGCCCTCCCGGCTCCAGATGTTCTTCGCTAATAACCACGACCAGGAATTTGACCCTCAAAG
GTTTACCACCTGTCCCAGCTGAGAAGAGGAAGCCCATCCGGGTGCTGTCTCTTTGATGGAATCGCT
ACAGGGCTCCTGGTGTGAAGGACTTGGGCATTGAGTGGACCGTACATTGCCTCGGAGGTGTGTGAG
GACTCCATCACGGTGGGCATGGTGCAGCACAGGGGAAGATCATGTACGTGGGGACGTCGCCAGCGTC
ACACAGAAGCATATCCAGGAGTGGGGCCATTTCGATCTGGTGATTGGGGGAGTCCCTGCAATGACCTC
TCCATCGTCAACCCTGCTCGAAGGGCCTACGAGGGCACTGGCCGGCTCTTCTTTGAGTTCTACCGC
CTCCTGCATGATGCGCGGCCAAGGAGGGAGATGATCGCCCTTCTTCTGGCTCTTTGAGAATGTGGT
GCCATGGGCGTTAGTGACAAGAGGGACATCTCGGATTTCTCGAGTCCAACCCTGTGATGATTGATGCC
AAAGAAGTGTGAGTGCACACAGGGCCCGCTACTTCTGGGGTAACCTTCCCGGTATGAACAGGCCGTTG
GCATCCACTGTGAATGATAAGCTGGAGTGCAGGAGTGTCTGGAGCATGGCAGGATAGCCAAGTTCAGC
AAAGTGGAGACCTACTACGAGGTCAAACCTCCATAAAGCAGGGCAAAGACCAGCATTCTTCTGTCTTC
ATGAATGAGAAAAGAGGACATCTTATGGTGCAGTAAATGGAAAGGGTATTTGGTTTCCAGTCCACTAT
ACTGACGCTCCAACATGAGCCGCTTGGCAGGCAGAGACTGCTGGGCCGGTTCATGGAGCGTGCCAGTC
ATCCGCCACCTTTCGCTCCGCTGAAGGAGTATTTTTCGTGTGTG
ACGCGTACGCGGCCGCTCGAG - GFP Tag - GTTTAAAC
  
```

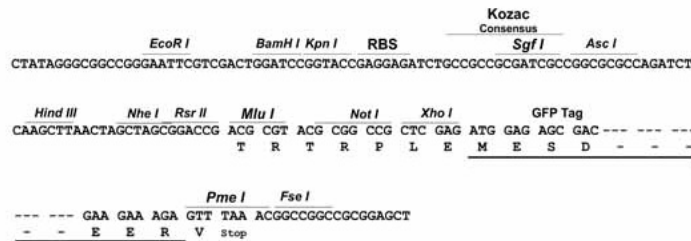
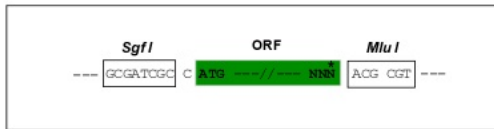
Protein Sequence: >Peptide sequence encoded by RG208192
 Blue=ORF Red=Cloning site Green=Tag(s)

MPAMPSSGPGDTSSSAEREEDRKDGEEQEPRGKEERQEPSTTARKVGRPGRKRKHPVVEGSDTPKDP
 AVISKSPSMAQDSGASELLPNGDLEKRSEPOPEEGSPAGGQKGGAPAEGEGAAETLPEASRAVENGCCT
 PKEGRGAPAEAGKEQKENTIESMKMEGSRGRLRGGLGWESSLRQRPMPRLTFQAGDPYYISKRKRDEWL
 ARWKREAEKKAKVIAGMNAVEENQGPGE SQKVEEASPPAVQPTDPASPTVATTPEPVGSDAGDKNATK
 AGDDEPEYEDGRFGIGELVWGKLRGFSWWPGRIVSWWMTGRSRAAEGTRWMMWFGDKFSVVCVEKLM
 PLSSFCSAFHQATYNKQPMYRKAIYEVLQVASSRAGKLPVCHDSDESDTAKAVEVQNKPMIEWALGGF
 QPSGPKGLEPPEEEKNPYKEYVYDMWVEPEAAAYAPPPAKKPRKSTAEKPKVKEIIDERTRERLYEYV
 RQKCRNIEDICISGSLNVTLEHPLFVGGMCQCNKCFLECAQYQYDDGYQSYCTICCGGREVLGCGNN
 NCCRCFCVEVDLLVGPAAQAAIKEDPWNCYMGHKGTYGLLRREDWPSRLQMFANNHDQEFDPK
 VYPPVPAEKRP IRVLSLFDGIATGLLVLKDLGIQVDRIASEVCEDSITVGMVRHQGKIMYVGDVRSV
 TQKHIQEWGPFDLVIGGSPCNDLSIVNPARKGLYEGTGRLFFEFYRLLHDARPKEGDDRPFFWL FENVV
 AMGVS DKRDISRFLESNPYMIDAKEVSAHRARYFWGNLPGMNRPLASTVNDKLELQECLEHGRIAKFS
 KVRTITTRSNSIKQKQDQHFVPFMNEKEDILWCTEMERVFVGFVHYTDVSNMSRLARQLLGRSWSVPV
 IRHLFAPLKEYFACV
 TRTRPLEMESDESGLPAMEIECRITGTLNGVEFELVGGEGTPEQGRMTNKMSTKGALTFSPYLLSHV
 MGYGFYHFGTYPYSGYENPFLHAINNGGYNTRIEKYEDGGVLHVSFSYRYEAGRVIGDFKVMGTGFPED
 SVIFTDKIIRS NATVEHLHPMGDNDLDGSFTRTFSLRDGGYSSVVD SHMHF KSAIHP SILQNGGPMFA
 FRRVEEDHSNTELGIVEYQHAFKTPDADAGEERV

Restriction Sites: Sgfl-MluI

Cloning Scheme:

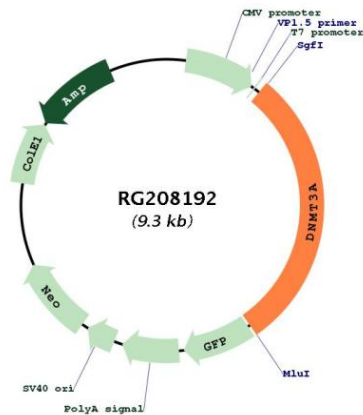
Cloning sites used for ORF Shuttling:



ACCN:	NM_175629
ORF Size:	2736 bp
OTI Disclaimer:	<p>Due to the inherent nature of this plasmid, standard methods to replicate additional amounts of DNA in E. coli are highly likely to result in mutations and/or rearrangements. Therefore, OriGene does not guarantee the capability to replicate this plasmid DNA. Additional amounts of DNA can be purchased from OriGene with batch-specific, full-sequence verification at a reduced cost. Please contact our customer care team at custsupport@origene.com or by calling 301.340.3188 option 3 for pricing and delivery.</p> <p>The molecular sequence of this clone aligns with the gene accession number as a point of reference only. However, individual transcript sequences of the same gene can differ through naturally occurring variations (e.g. polymorphisms), each with its own valid existence. This clone is substantially in agreement with the reference, but a complete review of all prevailing variants is recommended prior to use. More info</p>
OTI Annotation:	This clone was engineered to express the complete ORF with an expression tag. Expression varies depending on the nature of the gene.
Components:	The ORF clone is ion-exchange column purified and shipped in a 2D barcoded Matrix tube containing 10ug of transfection-ready, dried plasmid DNA (reconstitute with 100 ul of water).
Reconstitution Method:	<ol style="list-style-type: none"> 1. Centrifuge at 5,000xg for 5min. 2. Carefully open the tube and add 100ul of sterile water to dissolve the DNA. 3. Close the tube and incubate for 10 minutes at room temperature. 4. Briefly vortex the tube and then do a quick spin (less than 5000xg) to concentrate the liquid at the bottom. 5. Store the suspended plasmid at -20°C. The DNA is stable for at least one year from date of shipping when stored at -20°C.
RefSeq:	NM_175629.2
RefSeq Size:	4395 bp
RefSeq ORF:	2739 bp
Locus ID:	1788
UniProt ID:	Q9Y6K1
Cytogenetics:	2p23.3
Protein Families:	Druggable Genome
Protein Pathways:	Cysteine and methionine metabolism, Metabolic pathways
MW:	101.9 kDa

Gene Summary:

CpG methylation is an epigenetic modification that is important for embryonic development, imprinting, and X-chromosome inactivation. Studies in mice have demonstrated that DNA methylation is required for mammalian development. This gene encodes a DNA methyltransferase that is thought to function in de novo methylation, rather than maintenance methylation. The protein localizes to the cytoplasm and nucleus and its expression is developmentally regulated. [provided by RefSeq, Mar 2016]

Product images:


Circular map for RG208192