

Product datasheet for **RG208185**

ETV6 (NM_001987) Human Tagged ORF Clone

Product data:

Product Type:	Expression Plasmids
Product Name:	ETV6 (NM_001987) Human Tagged ORF Clone
Tag:	TurboGFP
Symbol:	ETV6
Synonyms:	TEL; TEL/ABL; THC5
Mammalian Cell Selection:	Neomycin
Vector:	pCMV6-AC-GFP (PS100010)
E. coli Selection:	Ampicillin (100 ug/mL)



[View online »](#)

ORF Nucleotide Sequence:

>RG208185 representing NM_001987
 Red=Cloning site Blue=ORF Green=Tags(s)

TTTTGTAATACGACTCACTATAGGGCGGCCGGAATTCGTCGACTGGATCCGGTACCGAGGAGATCTGCC
 GCC**GCGATCGCC**

ATGTCTGAGACTCCTGCTCAGTGTAGCATTAAAGCAGGAACGAATTCATATACACCTCCAGAGAGCCCAG
 TGCCGAGTTACGCTTCCTCGACGCCACTTCATGTTCCAGTGCCTCGAGCGCTCAGGATGGAGGAAGACTC
 GATCCGCCTGCCTGCGCACCTGCGCTTGACGCCAATTTACTGGAGCAGGGATGACGTAGCCCACTGGCTC
 AAGTGGGCTGAAAATGAGTTTTCTTAAAGGCCAATTGACAGCAACACGTTTGAATGAATGGCAAAGCTC
 TCCTGCTGCTGACCAAAGAGGACTTTCGCTATCGATCTCCTCATTGAGGTGATGTGCTCTATGAACCTCT
 TCAGCATATTCTGAAGCAGAGGAAACCTCGATTCTTTTTTACCATTCTCCACCCTGGAAACTCTATA
 CACACACAGCCGGAGGTCACTGCATCAGAACCATGAAGAAGATAACTGTGTCCAGAGGACCCCGAGGC
 CATCCGTGGATAATGTGCACCATAACCCCTCCACCATTGAACTGTTGCACCGCTCCAGGTACCTATCAC
 GACAAATCACCGCCTTCTCCTGACCCGAGCAGCGGCCCTCCGGTCCCCCTGGACAACATGATCCGC
 CGCCTCTCCCCGCTGAGAGAGCTCAGGGACCCAGGCCGACCAGGAGAAACAACCACAGGAGTCCCTACC
 CTCTGTGAGTGTCTCCATGGAGAATAACTGCTCCAGCGTCTCCGAGTCCCACCCGAAGCCATCCAG
 CCCCCGGCAGGAGACACGCGTGATCCAGCTGATGCCAGCCCCATCATGCACCTCTGATCTGAACTGAA
 CCCCCGACTCCGTGGATTTCAAACAGTCCAGGCTCTCCGAGGACGGGCTGCATAGGGAAGGGAAGCCCA
 TCAACCTCTCTCATCGGGAAGACCTGGCTTACATGAACCACATCATGGTCTCTGTCTCCCCGCTGAAGA
 GCACGCCATGCCATTGGGAGAAATAGCAGACTGTAGACTGCTTTGGGATTACGTCTATCAGTTGCTTTCT
 GACAGCCGGTACGAAAATTTCATCCGATGGGAGGACAAAGAATCCAAAATATTCCGGATAGTGGATCCCA
 ACGGACTGGCTCGACTGTGGGAAACCATAGAACAACAACAACATGACCTATGAGAAAAATGCCAGAGC
 CCTGCGCCACTACTACAACTAAACATTATCAGGAAGGAGCCAGGACAAAGGCTTTTGTTCAGTTTATG
 AAAACCCAGATGAAATCATGAGTGCCGAACAGACCGTCTGGAGCACCTAGAGTCCCAGGAGCTGGATG
 AACAAATATACCAAGAAGATGAATGC

AG**GCGACCG**ACGCGTACGCGGCCGCTCGAG - GFP Tag - GTTTAA

Protein Sequence:

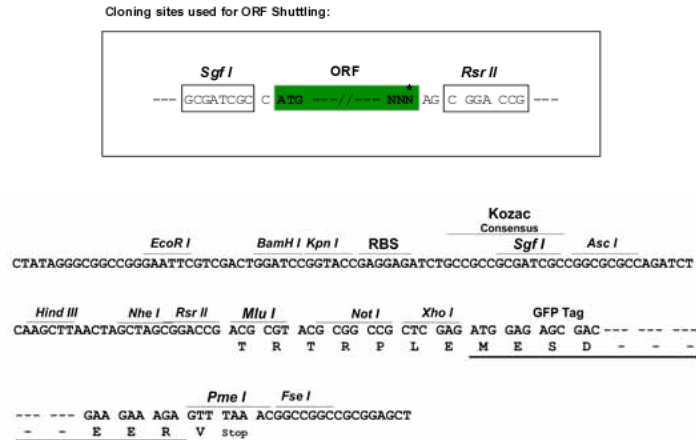
>RG208185 representing NM_001987
 Red=Cloning site Green=Tags(s)

MSETPAQCSIKQERISYTPPEPVPSYASSTPLHVPVPRALRMEEDSIRLPAHLRLQPIYWRDDVAQWL
 KWAENEFSLRPIDSNTFEMNGKALLLLTKEDFRYRSPHSGDVL YELLQHILKQRKPRILFSPFFHPGNSI
 HTQPEVILHQNHEDNCVQRTPRPSVDNVHNPPTIELLHRSRSPITTNHRSPDPEQRPLRSPLDNMIR
 RLSPAERAQGPRPHQENNHQESYPLSVSPMENNHC PASSESHPKPSSPRQESTRVIQLMPSPIMHPLILN
 PRHSVDFKQSRLEDGLHREGKPINLSHREDLAYMNHIMVSVSPPEEHAMPIGRIADCRLLWDYVYQLLS
 DSRYENFIRWEDKESKIFRIVDPNGLARLWGNHKNRTNMTYEKMSRALRHYYKLNIIIRKEPGQRLLFRFM
 KTPDEIMSGRTDRLEHLESQELDEQIYQEDC

SG**P**TRRRLE - GFP Tag - V

Restriction Sites:

SgfI-RsrII

Cloning Scheme:


ACCN: NM_001987

ORF Size: 1356 bp

OTI Disclaimer: Due to the inherent nature of this plasmid, standard methods to replicate additional amounts of DNA in E. coli are highly likely to result in mutations and/or rearrangements. Therefore, OriGene does not guarantee the capability to replicate this plasmid DNA. Additional amounts of DNA can be purchased from OriGene with batch-specific, full-sequence verification at a reduced cost. Please contact our customer care team at custsupport@origene.com or by calling 301.340.3188 option 3 for pricing and delivery.

The molecular sequence of this clone aligns with the gene accession number as a point of reference only. However, individual transcript sequences of the same gene can differ through naturally occurring variations (e.g. polymorphisms), each with its own valid existence. This clone is substantially in agreement with the reference, but a complete review of all prevailing variants is recommended prior to use. [More info](#)

OTI Annotation: This clone was engineered to express the complete ORF with an expression tag. Expression varies depending on the nature of the gene.

Components: The ORF clone is ion-exchange column purified and shipped in a 2D barcoded Matrix tube containing 10ug of transfection-ready, dried plasmid DNA (reconstitute with 100 ul of water).

- Reconstitution Method:**
1. Centrifuge at 5,000xg for 5min.
 2. Carefully open the tube and add 100ul of sterile water to dissolve the DNA.
 3. Close the tube and incubate for 10 minutes at room temperature.
 4. Briefly vortex the tube and then do a quick spin (less than 5000xg) to concentrate the liquid at the bottom.
 5. Store the suspended plasmid at -20°C. The DNA is stable for at least one year from date of shipping when stored at -20°C.

RefSeq: [NM_001987.5](#)

RefSeq Size: 5992 bp

RefSeq ORF: 1359 bp

Locus ID: 2120

UniProt ID: [P41212](#)

Cytogenetics: 12p13.2

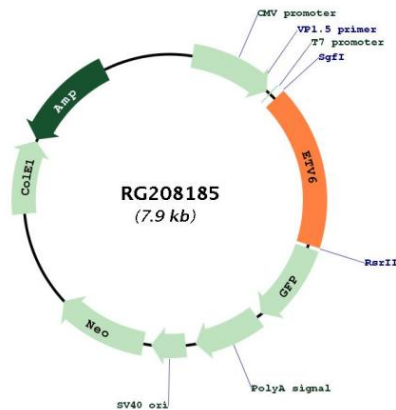
Domains: ETS, SAM_PNT

Protein Families: Druggable Genome, Transcription Factors

Protein Pathways: Dorso-ventral axis formation

Gene Summary: This gene encodes an ETS family transcription factor. The product of this gene contains two functional domains: a N-terminal pointed (PNT) domain that is involved in protein-protein interactions with itself and other proteins, and a C-terminal DNA-binding domain. Gene knockout studies in mice suggest that it is required for hematopoiesis and maintenance of the developing vascular network. This gene is known to be involved in a large number of chromosomal rearrangements associated with leukemia and congenital fibrosarcoma. [provided by RefSeq, Sep 2008]

Product images:



Circular map for RG208185