

Product datasheet for **RG208184**

P2Y8 (P2RY8) (NM_178129) Human Tagged ORF Clone

Product data:

Product Type: Expression Plasmids
Product Name: P2Y8 (P2RY8) (NM_178129) Human Tagged ORF Clone
Tag: TurboGFP
Symbol: P2Y8
Synonyms: P2Y8
Mammalian Cell Selection: Neomycin
Vector: pCMV6-AC-GFP (PS100010)
E. coli Selection: Ampicillin (100 ug/mL)
ORF Nucleotide Sequence: >RG208184 representing NM_178129
 Red=Cloning site Blue=ORF Green=Tags(s)

GACGTTGTATACGACTCCTATAGGGCGGCCGGAATTCGTCGACTGGATCCGGTACCGAGGAGATCTGCC
 GCC**GGCGGCC**

ATGCGAGTCCCGAACAGCACCGGCCCGGACAACGCGACGCTGCAGATGCTGCGGAACCCGGCGATCGCGG
 TGGCCCTGCCGTGGTGTACTCGCTGGTGGCGGGTCCAGCATCCCGGGCAACCTCTTCTCTGTGGGT
 GCTGTGCCGGCGCATGGGGCCAGATCCCCGTCGGTCATCTTCATGATCAACCTGAGCGTCACGGACCTG
 ATGCTGGCCAGCGTGTTCCTTTCCAAATCTACTACCATTGCAACCGCCACCACTGGGTATTCGGGGTGC
 TGCTTTGCAACGTGGTGACCGTGGCCTTTACGCAAACATGTATTCCAGCATCCTCACCATGACCTGTAT
 CAGCGTGGAGCGCTTCTGGGGTCCGTGTACCCGCTCAGCTCCAAGCGCTGGCGCCGCGCTGTTACGCG
 GTGGCCGCGTGTGCAGGGACCTGGCTGTGCTCCTGACCGCCCTGTCCCGCTGGCGCGCACCGATCTCA
 CCTACCCGGTGCACGCCCTGGGCATCATCACCTGCTTCGACGTCCTCAAGTGGACGATGCTCCCCAGCGT
 GGCCATGTGGGCCGTGTTCTCTCACCATCTTCATCCTGCTGTTCTCTCATCCCGTTCGTGATCACCGTG
 GCTTGTACACGGCCACCATCCTCAAGCTGTTGCGCACGGAGGAGGGCGCACGGCCGGGAGCAGCGGAGGC
 GCGCGTGGGCCCTGGCCGCGGTGGTCTTGCTGGCCTTTGTACCTGCTTCGCCCCCAACAACCTTCGTGCT
 CCTGGCGCACATCGTGAGCCGCTGTTCTACGGCAAGAGCTACTACCACGTGTACAAGCTCACGCTGTGT
 CTCAGTGCCTCAACAACCTGTCTGGACCGTGGTGGTTATTACTTTGCGTCCCGGGAATTCAGCTGCGCC
 TCGCGGAATATTTGGGCTGCCGCGGGTGCCAGAGACACCCTGGACACGCGCCGCGAGAGCCTCTTCTC
 CGCCAGGACCACGTCCGTGCGCTCCGAGGCCGGTGGCACCCCTGAAGGGATGGAGGGAGCCACCAGGCC
 GGCTCCAGAGGCAGGAGAGTGTGTTT

ACGCGTACGCGGCCGCTCGAG - GFP Tag - GTTTAA



[View online »](#)

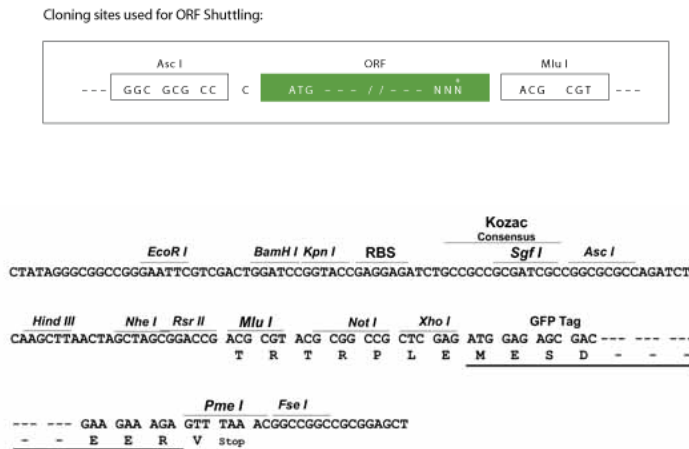
Protein Sequence: >RG208184 representing NM_178129
Red=Cloning site Green=Tags(s)

MQVPNSTGPDNATLQMLRNPAIAVALPVVYSLVAAVSIPGNLFLSLWVLCRRMGPRSPSVIFMINLSVTDL
 MLASVLPFQIYYHCNRHHWVFGVLLCNVVTVAFYANMYSSILTMTCSVERFLGVLVPLSSKRWRRRYYA
 VAACAGTWLLLLTALSPLARTDLTYPVHALGIITCFDVLKWTMLPSVAMWAVFLFTIFILLFLIPFVITV
 ACYTATILKLLRTEEAHGREQRRRAVGLAAVLLAFVTCFAPNNFVLLAHIVSRFLFYGKSYHYVYKLTLC
 LSCLNNCLDPFVYFASREFQLRLREYLGCRRVPRDLDTRRESLFSARTTSVRSEAGAHPEGMEGATRP
 GLQRQESVF

TRTRPLE - GFP Tag - V

Restriction Sites: AscI-MluI

Cloning Scheme:



ACCN: NM_178129

ORF Size: 1077 bp

OTI Disclaimer: The molecular sequence of this clone aligns with the gene accession number as a point of reference only. However, individual transcript sequences of the same gene can differ through naturally occurring variations (e.g. polymorphisms), each with its own valid existence. This clone is substantially in agreement with the reference, but a complete review of all prevailing variants is recommended prior to use. [More info](#)

OTI Annotation: This clone was engineered to express the complete ORF with an expression tag. Expression varies depending on the nature of the gene.

Components: The ORF clone is ion-exchange column purified and shipped in a 2D barcoded Matrix tube containing 10ug of transfection-ready, dried plasmid DNA (reconstitute with 100 ul of water).

Reconstitution Method:

1. Centrifuge at 5,000xg for 5min.
2. Carefully open the tube and add 100ul of sterile water to dissolve the DNA.
3. Close the tube and incubate for 10 minutes at room temperature.
4. Briefly vortex the tube and then do a quick spin (less than 5000xg) to concentrate the liquid at the bottom.
5. Store the suspended plasmid at -20°C. The DNA is stable for at least one year from date of shipping when stored at -20°C.

RefSeq: [NM_178129.5](#)

RefSeq Size: 4208 bp

RefSeq ORF: 1080 bp

Locus ID: 286530

UniProt ID: [Q86VZ1](#)

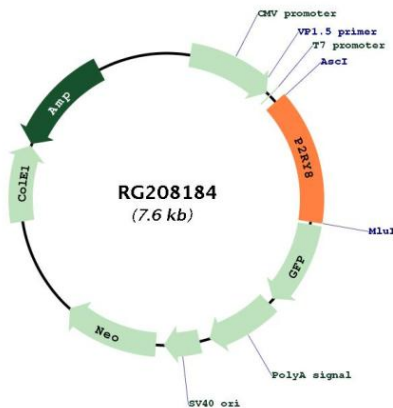
Cytogenetics: X;Y

Protein Families: Druggable Genome, GPCR, Transmembrane

Protein Pathways: Neuroactive ligand-receptor interaction

Gene Summary: The protein encoded by this gene belongs to the family of G-protein coupled receptors, that are preferentially activated by adenosine and uridine nucleotides. This gene is moderately expressed in undifferentiated HL60 cells, and is located on both chromosomes X and Y. [provided by RefSeq, Jul 2008]

Product images:



Circular map for RG208184