

Product datasheet for **RG208178**

SLC6A18 (NM_182632) Human Tagged ORF Clone

Product data:

Product Type:	Expression Plasmids
Product Name:	SLC6A18 (NM_182632) Human Tagged ORF Clone
Tag:	TurboGFP
Symbol:	SLC6A18
Synonyms:	Xtrp2
Mammalian Cell Selection:	Neomycin
Vector:	pCMV6-AC-GFP (PS100010)
E. coli Selection:	Ampicillin (100 ug/mL)



[View online »](#)

ORF Nucleotide Sequence:

>RG208178 representing NM_182632
 Red=Cloning site Blue=ORF Green=Tags(s)

TTTTGTAATACGACTCACTATAGGGCGGCCGGGAATTCGTCGACTGGATCCGGTACCGAGGAGATCTGCC
 GCC**CGGATCGCC**

ATGGCTCATGCCCAAGAACCGACCCGGCCGCTGCGACCTCGGGATGAGAGGCCCAAGTGGGACAACA
 AGGCCAGTACCTCCTGAGCTGCATTGGGTTTGGCGTGGGGTGGGAACATTTGGCGTTCCCATACCT
 GTGCCAGACCTATGGAGGAGGGCTTCTCATCCCTACGTCATCGCGTGGTCTTCGAGGGGATCCCC
 ATTTTCCACGTCGAGCTCGCCATCGGCCAGCGGCTGCGGAAGGGCAGCGTCGCGGTGGACGGCCATCT
 CCCCCTACCTCAGTGGAGTAGGGCTGGGCTGTGTACGCTGTCTTCTGATCAGCCTGTACTACAACAC
 CATCGTGGCGTGGGTGCTGTGTACCTCCTCAACTCCTCCAGCACCCGCTGCCCTGGAGCTCCTGCCCA
 CCGGACCTCAACAGAACAGGTTTGTGGAGGAGTCCAGGGCAGCAGCGCCGTGAGCTACTTCTGGTACC
 GGCAGACTGAACATCACAGCCGACATCAATGACAGTGGCTCCATCCAGTGGTGGCTGCTCATCTGCTT
 GGCAGCCTCCTGGCAGTCGTGTACATGTGTGTCATCAGGGCATTGAGACTACAGGAAGGTGATTTAC
 TTCACAGCTTTGTTCCCTTACCTGGTCTGACCATCTTCTCATCAGAGGGCTGACCCTGCCAGGGGCAA
 CAAAAGGACTCATCTACTTGTCTACTCCCAACATGCACATTCTCCAGAACCCCGGGTGTGGCTGGACGC
 AGCCACCCAGATATTCTTCTCTGTCCCTGGCCTTCGGAGGACACATCGCTTTTGCAAGTTACAACCTCG
 CCCAGGAATGACTGCCAGAAGGATGCGGTGGTCATCGCCCTGGTCAACAGGATGACCTCCCTGTACGCGT
 CCATCGCTGTCTTCTGTCTGGGTTCAAAGCAACTAATGACTACGAGCACTGCCTGGACAGAAAACAT
 CCTCAGCCTCATCAACGACTTTGACTTCCAGAGCAGAGCATCTCCAGGGACGACTACCCAGCCGTCCTC
 ATGCACCTGAACGCCACCTGGCCCAAGAGGGTGGCCAGCTCCCCTGAAGGCCCTGCCTCTGGAAGACT
 TTCTGGATAAGAGTGCCTCGGGCCCGGCTGGCCTTCTGCTGCTTACAGGAGACCGACCTCCACATGCC
 GGGGGCTCCTGTGTGGCCATGCTCTTCTCGGGATGCTGTTACCTTGGGGCTATCGACCATGTTTCGGG
 ACCGTGGAGGCGTTCATCACACCCTGCTGACGCTGGGGTCTGCCTAGATGGTCCCCAAGGAGGCC
 TGACTGGGCTGGTCTGCCTGGTCTGCTTCTCCGCCACCTGCTTACGCTGCAGTCTGGGAACTACTG
 GCTGGAGATTTTCGACAATTTTCCGCTTCCCTGAACCTGCTCATGTTGGCCTTCTCGAGGTTGTGGGT
 GTCGTTTATGTTTATGGAATGAAACGGTCTGCGATGACATTGCGTGGATGACCGGGAGGCGGCCAGCC
 CCTACTGGCGGTGACCTGGAGGTGGTCACTCCCTGCTGCTGACCATCTTGTGGCTTACATCATCT
 CCTGTTCTGGAAGCCACTGAGATACAAGCCTGGAACCCCAAATACGAGCTGTTCCCTCGCGTCAGGAG
 AAGCTTACCCGGGCTGGGCGCGCGCCCTGTGTGCTGCTGCTTGTGCCCGTGTGTGGTCCCGG
 TGCCCGCCTTGCTCAGCTGCTACCCGCGGAGGCGGACGTGGAGGGACAGGGACGCGCCAGACAC
 GGACATGCGCCCGACACGGACACGCGCCAGACACGGACATGCGCCCGACACGGACATGCGC

AG**CGGACCG**ACGCGTACGCGGCCGCTCGAG - GFP Tag - GTTTAA

Protein Sequence:

>RG208178 representing NM_182632
 Red=Cloning site Green=Tags(s)

MAHAPEPDAACDLGDERPKWDNKAQYLLSCIGFAVGLGNIWRFPYLQTYGGGAFLIPYVIALVFEGIP
 IFHVELAIGQLRKGSVGVWTAISPYLSGVGLGCVTLFLISLYNTIVAVWLWYLLNSFQHPLPWSSCP
 PDLNRTGFVEECQSSAVSYFWYRQTLNITADINDSGSIQWLLICLAASWAVVYMCVIRGIETTKVYIY
 FTALFPYLVLTIFLIRGLTLPGATKGLIYLFPMHILQNPVWVLDAAATQIFFSLAFGGHIAFASYSN
 PRNDCQKDAVVIALVNRMTSLYASIAVFSVLGFKATNDYEHCLDRNLSLINDDFPEQSI SRDDYPAVL
 MHLNATWPKRVAQLPLKACLEDLFDKASGPGAFVVF TETDLHMPGAPVWAMLFFGMLFTLGLSTMFG
 TVEAVITPLLDVGLPRWVPKEALTGLVCLVCFLSATCF TLQSGNYWLEIFDNFAASLNLMLAFLEVVG
 VVYVYGMKRFCDIAWMTGRRPSYWRWTWRVVSPLLLTIFVAYIILLFWKPLRYKAWNPYELFSPRQE
 KLYPGWARAACVLLSLLPVLWVVAALAQLLRRRRRTWRDRDARPDTPMRPDTDRPDTMRPDTMR

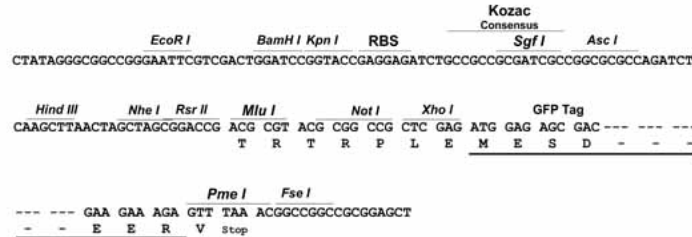
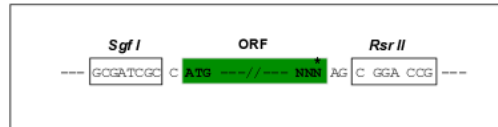
SGP**TRRRLE** - GFP Tag - V

Restriction Sites:

Sgfl-RsrII

Cloning Scheme:

Cloning sites used for ORF Shuttling:


ACCN: NM_182632

ORF Size: 1884 bp

OTI Disclaimer: The molecular sequence of this clone aligns with the gene accession number as a point of reference only. However, individual transcript sequences of the same gene can differ through naturally occurring variations (e.g. polymorphisms), each with its own valid existence. This clone is substantially in agreement with the reference, but a complete review of all prevailing variants is recommended prior to use. [More info](#)

OTI Annotation: This clone was engineered to express the complete ORF with an expression tag. Expression varies depending on the nature of the gene.

Components: The ORF clone is ion-exchange column purified and shipped in a 2D barcoded Matrix tube containing 10ug of transfection-ready, dried plasmid DNA (reconstitute with 100 ul of water).

Reconstitution Method:

1. Centrifuge at 5,000xg for 5min.
2. Carefully open the tube and add 100ul of sterile water to dissolve the DNA.
3. Close the tube and incubate for 10 minutes at room temperature.
4. Briefly vortex the tube and then do a quick spin (less than 5000xg) to concentrate the liquid at the bottom.
5. Store the suspended plasmid at -20°C. The DNA is stable for at least one year from date of shipping when stored at -20°C.

RefSeq: [NM_182632.1](#), [NP_872438.1](#)
RefSeq Size: 2120 bp

RefSeq ORF: 1887 bp

Locus ID: 348932

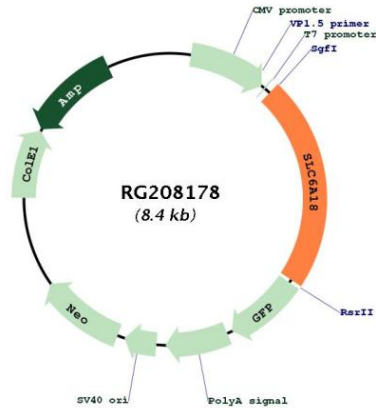
UniProt ID: [Q96N87](#)

Cytogenetics: 5p15.33

Protein Families: Druggable Genome, Transmembrane

Gene Summary: The SLC6 family of proteins, which includes SLC6A18, act as specific transporters for neurotransmitters, amino acids, and osmolytes like betaine, taurine, and creatine. SLC6 proteins are sodium cotransporters that derive the energy for solute transport from the electrochemical gradient for sodium ions (Hoglund et al., 2005 [PubMed 16125675]).[supplied by OMIM, Apr 2010]

Product images:



Circular map for RG208178