

## Product datasheet for **RG208165**

### CCDC78 (NM\_001031737) Human Tagged ORF Clone

#### Product data:

Product Type:	Expression Plasmids
Product Name:	CCDC78 (NM_001031737) Human Tagged ORF Clone
Tag:	TurboGFP
Symbol:	CCDC78
Synonyms:	C16orf25; CNM4; hsCCDC78; JFP10
Mammalian Cell Selection:	Neomycin
Vector:	pCMV6-AC-GFP (PS100010)
E. coli Selection:	Ampicillin (100 ug/mL)
ORF Nucleotide Sequence:	>RG208165 representing NM_001031737 Red=Cloning site Blue=ORF Green=Tags(s)

TTTTGTAATACGACTCACTATAGGGCGGCCGGAATTCGTCGACTGGATCCGGTACCGAGGAGATCTGCC  
GCC**CGATCGCC**

ATGGAGCAGCCAGCCACCACAGGCCCCAGGCTGGACCTCCCTCTCGGCGGGTGGAGAATGTTGTGCTAC  
GAGCCAAGGACTGGCTGCCAGGAGCTCCTGGGGCACCAGTGTGGCCACCAGCTTGGAAAGCAGAGGT  
CCCACCAGATCTAGCGCTCAATAAGGAGCAGCAGCTGCAGATCTCCAAGGAGCTGGTCGACATTCAGATC  
ACAACCCACCACCTACATGAGCAGCATGAGGCTGAAATCTCCAGCTGAAGAGTGAGATCCTTCGGCTGG  
AGAGCCGGTACTGGAGCTGGAGCTGCGAGGAGATGGCACCAGCCAGGGCTGTGCAGTCCCAGTGGAGTC  
TGACCCAGGCATCCCCGGGCAGCAGCCCAAGAGCTCAGACACAAAGCCAGGTGCCTGGACACTCTGAT  
GACCACAGATTCCAGGTGCAGCCCAAGAACCATTGAACCCCGAGAATGAGCAGCACAGGCTGGGGAGCG  
GCCTGCAGGGGAAGTGAAGTGGGCGCTGGAGCATCAGGAGGCCCGGCAGCAGGCACTGGTGACGCGTGT  
GGCAACCTGGGCGGCAGCTGCAGGGAGCCGAGAGGAGGCCAGGGCAGCCGGGCAGCGACTGGCCACA  
CAGGCTGTGGTGTGTGCAGCTGCCAAGGCCAGCTCCGTAGGCAGAGGCTGAAAATGCCCGGCTGCAGC  
TGCAGCTCAAGAACTGAAGGATGAGTACGTCTACGGCTGCAACTGCGCCCGGCAGGCACTGGAGGAC  
CGCAGATGGTGCAGGCCAAGCGCCAGCCACCACGGCCCTCCGGACATTCCTGGAGGCACTCTGGAGGAC  
ATCCGGGCAGCGCACCGCAGCCGTGAGCAGCAGCTGGCCCGGGCTGCCCGCAGTACCACAAGAGGCTGG  
TGGATCTGAGCCGAGGCATGAAGAGCTACTGGTTGCCTACAGGGCACCTGGGAACCCCAAGCTATTTT  
TGACATAGCCAGCTTGGACCTGGAACCATTGCCCGTGCCCTGGTCACTGACTTCAGCCATCGGGAGGAC  
CAGCACGGCGGGCTGGGCACTGCTCTCATCCCCAAAAAGAGACCCGGTGGAGCCTCCAGGGGGGAA  
CATCAGAGCCACAGGGCTGGACGCTGCATCCTGGGCCAGATCCACCAGAAGCTCCGGGACTTCTCCCG  
CAGCACCCAGAGCTGGAACGGGAGCGGGCAGCAGCTGCTGGTCCGGGCCACGATGGCTGAAGAGCAACTTT  
CTGAGCTACAGGAGTACGTGGACCAGCACCTGGGCAGGTACAAGCACGAAATCC

AGCGGACCGACGCTACGCGGCCGCTCGAG - GFP Tag - GTTTAA



[View online »](#)

**Protein Sequence:** >RG208165 representing NM\_001031737  
 Red=Cloning site Green=Tags(s)

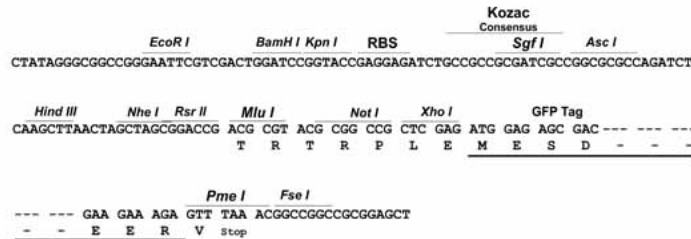
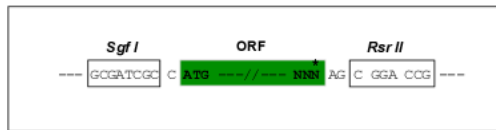
```
MEHAATTGPRPGPPSRRVENVLRKDWLPGAPGGTAVWATSLEAEVPPDLALNKEQQQLQISKELVDIQI
TTHHLHEQHEAEIFQLKSEILRLESRLVLELELRGDGTSQGCAPVVESDPRHPRAAAQELRHAQVPGHSD
DHRFQVQPKNTMNPENEQHRLGSLQGEVKWALEHQEARQQALVTRVATLGRQLQGAREEARAAGQRLAT
QAVVLCSCQQLRQAEAEENARLQLLKKLKDEYVLRQLQHCARQAVEHADGAGQAPATTALRTFLEATLED
IRAAHRSREQLARAARSYHKRLVDLSRRHEELLVAYRAPGNPQAIFDIAASLDLEPLPVPLVTFD SHRED
QHGGPGALLSSPKRPGGASQGGTSEPQGLDAASWAIHQKLRDFSRSTQSWNGSGHSCSWGPRWLKSNF
LSYRSTWTSTWAGTSTKS
```

SGPTRRRLE - GFP Tag - V

**Restriction Sites:** SgfI-RsrII

**Cloning Scheme:**

Cloning sites used for ORF Shuttling:



**ACCN:** NM\_001031737

**ORF Size:** 1314 bp

**OTI Disclaimer:** The molecular sequence of this clone aligns with the gene accession number as a point of reference only. However, individual transcript sequences of the same gene can differ through naturally occurring variations (e.g. polymorphisms), each with its own valid existence. This clone is substantially in agreement with the reference, but a complete review of all prevailing variants is recommended prior to use. [More info](#)

**OTI Annotation:** This clone was engineered to express the complete ORF with an expression tag. Expression varies depending on the nature of the gene.

**Components:** The ORF clone is ion-exchange column purified and shipped in a 2D barcoded Matrix tube containing 10ug of transfection-ready, dried plasmid DNA (reconstitute with 100 ul of water).

**Reconstitution Method:**

1. Centrifuge at 5,000xg for 5min.
2. Carefully open the tube and add 100ul of sterile water to dissolve the DNA.
3. Close the tube and incubate for 10 minutes at room temperature.
4. Briefly vortex the tube and then do a quick spin (less than 5000xg) to concentrate the liquid at the bottom.
5. Store the suspended plasmid at -20°C. The DNA is stable for at least one year from date of shipping when stored at -20°C.

**RefSeq:** [NM\\_001031737.1](#), [NP\\_001026907.1](#)

**RefSeq Size:** 1693 bp

**RefSeq ORF:** 1317 bp

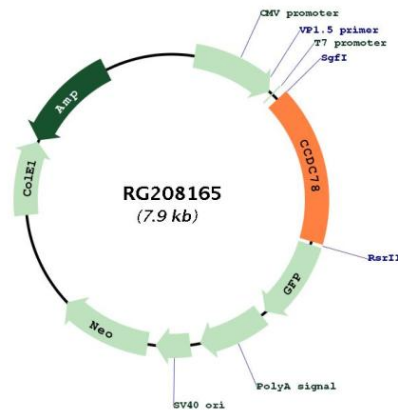
**Locus ID:** 124093

**UniProt ID:** [A2IDD5](#)

**Cytogenetics:** 16p13.3

**Gene Summary:** The product of this gene contains two coiled-coil domains. The function of this gene is currently unknown. [provided by RefSeq, Sep 2012]

## Product images:



Circular map for RG208165