

## Product datasheet for **RG208162**

### MYBPH (NM\_004997) Human Tagged ORF Clone

#### Product data:

Product Type:	Expression Plasmids
Product Name:	MYBPH (NM_004997) Human Tagged ORF Clone
Tag:	TurboGFP
Symbol:	MYBPH
Mammalian Cell Selection:	Neomycin
Vector:	pCMV6-AC-GFP (PS100010)
E. coli Selection:	Ampicillin (100 ug/mL)



[View online »](#)

**ORF Nucleotide Sequence:**

>RG208162 representing NM\_004997  
 Red=Cloning site Blue=ORF Green=Tags(s)

TTTTGTAATACGACTCACTATAGGGCGGCCGGAATTCGTCGACTGGATCCGGTACCGAGGAGATCTGCC  
 GCC**CGGATCGCC**

ATGATGGAACACCTCCGAGGGCCCTGCCTGCAGTCCAGAGGAGACCCGATCTGAATCTGCCAAGG  
 TGCCACAGCAGAGCCTCCCGGAGAAGTGGCAGTATCAGAGTCCACCAGAGAAGAGCAGGTGCCAAGCC  
 GCAGGCCCTGCCACAGGCCCTACAGCCTCCACAGCCACTAAGCCTGCACCCCAAGTGAAGATGTC  
 CCCAGTGGCCACTGCTGCTGACCTGGATGATGTGAGCAGCAGCTCTGTGACTGTGAGCTGGGAGCCCC  
 CAGAGAGGCTGGGAGGCTGGCCCTCCAGGGCTATGTGCTGGAGCTCTGCAGAGAGGGAGCCTCGGAGTG  
 GGTGCCTGTGAGTGGCCGCCATGATGGTGACCCAGCAGACTGTGCGAACCTGGCTCTGGGAGACAAG  
 TTCCTCTGCGCTGTCTGCAGTGAATTCGAGGGGCTGGCCCGCGGCCATGCTGGACCAGCCCATCC  
 ACATCCGAGAGAATTGAGGCCCAAGATCCGTGTCCCGGCCACCTCCGTGAGACCTACATCCGCCA  
 GGTGGGAGAGACGGTCAACTGCAAATCCCCTCCAGGGGAAGCCTAAGCCTCAGGCCACATGGACCCAC  
 AATGGCCATGCCCTGGACAGCCAGCGGGTGGAGCATGCGCACCGGGGACCAGGACTCCATCCTCTTATT  
 GCTCGGCCAGCGCTCCGACTCTGGCCGCTACGAGCTCACTGTGCGCGTGAAGACCTGGAGGCCAAGGC  
 AGTCATTGACATCCTGGTATTGAGAACTGGACCCCCAGCAGCATCAGGCTCCTGGAGCTCTGGGGC  
 TGCAATGCTGCTTTCAGTGGACGCCACCCAGGACACAGGCAACACAGAGCTCCTGGGCTACATGGTGC  
 AGAAGGCAGACAAAAGACAGGGCAATGGTTCACAGTGTGGAGCGCTACCACCAACCACCTGCACCAT  
 CTCTGACCTCATCATCGGCAACTCGTACTCCTCCGGTCTTCTCAGAAAACCTGTGTGGACTCAGCACC  
 TCGGCCACCGTACCAAGGAGCTCGCCACATCCAGAAGGCAGATATTGCTGCCAAACCTAAAGGGTTTA  
 TTGAGCGAGACTTCTCAGAAGCCCCTCATTACCCAGCCCCTGGCTGACCACACCTCCACCCCTGGCTA  
 CAGCACCCAGTTGTTCTGCAAGTCCGAGCTTCCACCAAGCCCAAGATCATCTGGATGAAAAACAAGATG  
 GAGATCCAGGGCAACCCAAATACCGCGCCTCTCTGAGCAAGGCGTCTGCACCCTAGAGATCCGGAAAC  
 CCAGCCCTTTGATTCTGGGGTCTACACATGCAAGGCCATAAATGTGCTGGGGGAGGCATCTGTGGACTG  
 CCGGCTGGAGGTCAAAGCCTCAGCCGCACAC

**ACGCGTACGCGGCCGCTCGAG** - GFP Tag - GTTTAA

**Protein Sequence:**

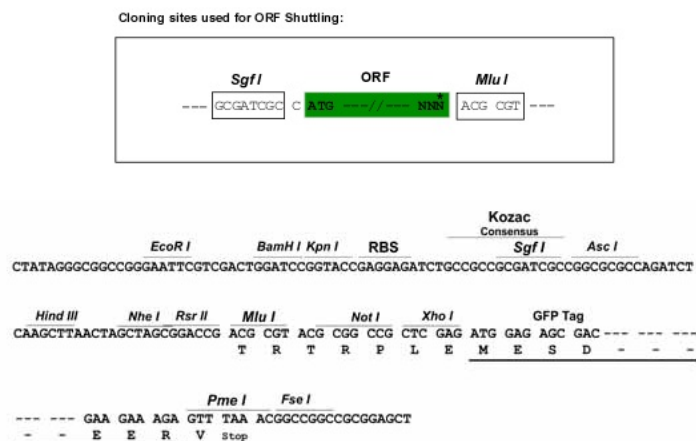
>RG208162 representing NM\_004997  
 Red=Cloning site Green=Tags(s)

MMEKNTSEGPAC SPEETASESAKVPTAEPPEVAVSESTREEQVPKPQAPAPQAPTASTATKPAPPESEDV  
 PSAPLLLTLDDVSSSVTVSWEPPELRLGLQGYVLELCREGASEWVPVSARPMVMTQQTVRNALGDK  
 FLLRVS AVSSAGAGPPAML DQPIHIRENIEAPKIRVPRHLRQTYIRQVGETVNLQIPFQGKPKPQATWTH  
 NGHALDSQRVSMRTGDQDSILFIRSAQRSDSGRYELTVRVEDLEAKAVIDILVIEKPGPPSSIRLLDVWG  
 CNAALQWTPPQDTGNTELLGYMVQKADKKTGWFTVLERVHPTTCTISDLIIGNSYSFRVFSENL CGLST  
 SATVTKELAHIQKADIAAKPKGFIERDFSEAPSF TQPLADHTSTPGYSTQLFCSVRASPKPKIIWMKNKM  
 EIQGNPKYRALSEQGVCTLEIRKPSPFDSGVYTCKAINVLGEASVDCRLEVKASAAH

**TRTRPLE** - GFP Tag - V

**Restriction Sites:**

Sgfl-Mlul

**Cloning Scheme:**


**ACCN:** NM\_004997

**ORF Size:** 1431 bp

**OTI Disclaimer:** The molecular sequence of this clone aligns with the gene accession number as a point of reference only. However, individual transcript sequences of the same gene can differ through naturally occurring variations (e.g. polymorphisms), each with its own valid existence. This clone is substantially in agreement with the reference, but a complete review of all prevailing variants is recommended prior to use. [More info](#)

**OTI Annotation:** This clone was engineered to express the complete ORF with an expression tag. Expression varies depending on the nature of the gene.

**Components:** The ORF clone is ion-exchange column purified and shipped in a 2D barcoded Matrix tube containing 10ug of transfection-ready, dried plasmid DNA (reconstitute with 100 ul of water).

**Reconstitution Method:**

1. Centrifuge at 5,000xg for 5min.
2. Carefully open the tube and add 100ul of sterile water to dissolve the DNA.
3. Close the tube and incubate for 10 minutes at room temperature.
4. Briefly vortex the tube and then do a quick spin (less than 5000xg) to concentrate the liquid at the bottom.
5. Store the suspended plasmid at -20°C. The DNA is stable for at least one year from date of shipping when stored at -20°C.

**RefSeq:** [NM\\_004997.2](#), [NP\\_004988.2](#)

**RefSeq Size:** 1806 bp

**RefSeq ORF:** 1434 bp

**Locus ID:** 4608

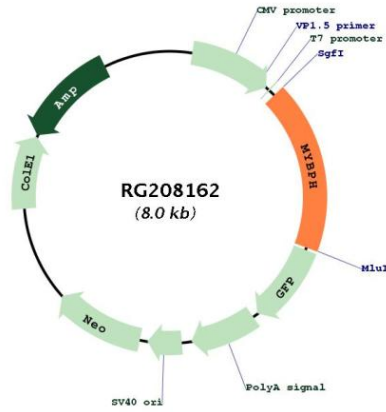
**UniProt ID:** [Q13203](#)

**Cytogenetics:** 1q32.1

Domains: ig, IGc2, IG, FN3

Gene Summary: Binds to myosin; probably involved in interaction with thick myofilaments in the A-band.  
[UniProtKB/Swiss-Prot Function]

**Product images:**



Circular map for RG208162