

Product datasheet for **RG208149**

C22ORF30 (PRR14L) (NM_173566) Human Tagged ORF Clone

Product data:

Product Type: Expression Plasmids
Product Name: C22ORF30 (PRR14L) (NM_173566) Human Tagged ORF Clone
Tag: TurboGFP
Symbol: C22ORF30
Synonyms: C22orf30
Mammalian Cell Selection: Neomycin
Vector: pCMV6-AC-GFP (PS100010)
E. coli Selection: Ampicillin (100 ug/mL)
ORF Nucleotide Sequence: >RG208149 representing NM_173566
 Red=Cloning site Blue=ORF Green=Tags(s)

TTTTGTAATACGACTCACTATAGGGCGGCCGGAATTCGTCGACTGGATCCGGTACCGAGGAGATCTGCC
 GCC**CGCATCGCC**

ATGCAGAGGCTCTTCATGACCCAGTTTACACAGGGCCTGAAAGGGTTACGGTCTCCAGCCTCCATAGCAG
 ACAAGGCTTTCTGTTCTCTGCCCTACTCGGTGGGCAGAGTCTATCCATTTGGAGCCAGCATGGTCCTTC
 TGTCTGCTCCTTCGAAATCTCTTCTTTCATTCCCCTCACTGCAAGCGGCAACCAAGTCTGGGCACCACA
 AGCAGCCACACCATGTTACCATATGTGCCTCTTCCAGGCATGGAAGCTACATATAACACCAGCGGCAGTC
 AGACGAGGCTGGAGCCTCATTCCCTGCCTTGGTACCAAAGTCTTGCTTGGTAGCAGAATCAGCTGTCAG
 CAAGCTCCTGCTTTCAGCCTCTGAGTTCAGGTTTCGTGGATTGGATGAGCTGGATGGTGTGAAAGCAGCA
 TGCCCCCTGCCACAGAGCAGCCCCCAGAACAGAAAGAGGCTGAGCCAGAGAAGAGGCCAAAGAAAGTCT
 CACAGATTCGCATCCGGAAAACCATTCCTAGGCCAGATCCTAATCTTACCCCCATGGGCCTTCTCGACC
 CAAAAGGTTAAAGAAGAAGGAGTTTAGTTTAGAAGAGATATATACCAACAAGAATTATAAATCTCCTCCT
 GCAAACAGGGACCTGGATTCTAGCTGCCCCGAGCACTGACAGCGAAACCGGGCACTTCTGGTATTCGGAT
 ATGCGCAGCGCCAAGCGCAGCCGACCCACTGCTGGCCTCACGCCGTCTGATTGGCTGCAGCTCTCCGGA
 GGGCGGGGCCATCCGAGAAGCTATCCATATTGGAGGAGGCTGCTAGTCCCTTTGCTGGTACCTGCCGGC
 TGGAGAGCGGGGAGGGTCACGTGGTTAAGACTCGCCACGTGGCCGGGCGGGTACTCAAGCCTG

ACGCGTACGCGGCCGCTCGAG - GFP Tag - GTTTAA



[View online »](#)

Protein Sequence: >RG208149 representing NM_173566
Red=Cloning site Green=Tags(s)

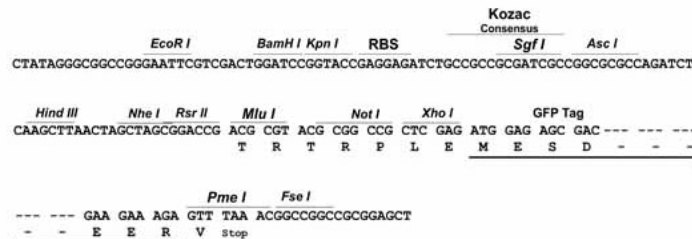
MQRLFMTQFTQGLKGLRSPASIADKVFCSLPYSVGRVLSIWSQHGPSVCSFEISSLHSPHCKRQPSLGTT
 SSHTMLPYVPLPGMEATYNTSGSQTRLEPPFPALVPKSCLVAESAVSKLLL SASEFQVRGLDELGDGKAA
 CPCPQSSPPEQKEAEPEKRPKKVSQIRIRKTI PRPD PNLTPMGLPRPKRLKKKEFSLEEIYTNKNYKSP
 ANRDLDSSCPSTDSETGHFLVFGYAQRQAQPHPLLASRRLIGCSSPEGRGHPRSYPYWRRLLVLWCWYLP
 WRAGRVTWRLATWAGRGDSSL

TRTRPLE - GFP Tag - V

Restriction Sites: SgfI-MluI

Cloning Scheme:

Cloning sites used for ORF Shuttling:



ACCN: NM_173566

ORF Size: 906 bp

OTI Disclaimer: The molecular sequence of this clone aligns with the gene accession number as a point of reference only. However, individual transcript sequences of the same gene can differ through naturally occurring variations (e.g. polymorphisms), each with its own valid existence. This clone is substantially in agreement with the reference, but a complete review of all prevailing variants is recommended prior to use. [More info](#)

OTI Annotation: This clone was engineered to express the complete ORF with an expression tag. Expression varies depending on the nature of the gene.

Components: The ORF clone is ion-exchange column purified and shipped in a 2D barcoded Matrix tube containing 10ug of transfection-ready, dried plasmid DNA (reconstitute with 100 ul of water).

Reconstitution Method:

1. Centrifuge at 5,000xg for 5min.
2. Carefully open the tube and add 100ul of sterile water to dissolve the DNA.
3. Close the tube and incubate for 10 minutes at room temperature.
4. Briefly vortex the tube and then do a quick spin (less than 5000xg) to concentrate the liquid at the bottom.
5. Store the suspended plasmid at -20°C. The DNA is stable for at least one year from date of shipping when stored at -20°C.

Note: Plasmids are not sterile. For experiments where strict sterility is required, filtration with 0.22um filter is required.

RefSeq: [NM_173566.1](#), [NP_775837.1](#)

RefSeq Size: 1872 bp

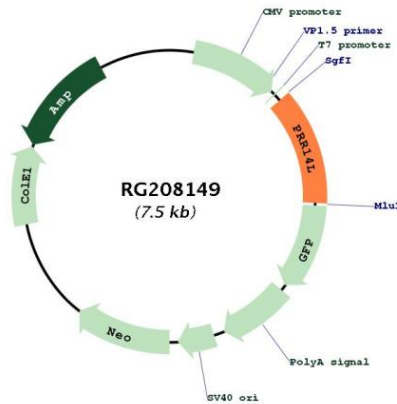
RefSeq ORF: 6456 bp

Locus ID: 253143

UniProt ID: [Q5THK1](#)

Cytogenetics: 22q12.2

Product images:



Circular map for RG208149