

Product datasheet for **RG208142**

C11orf53 (NM_198498) Human Tagged ORF Clone

Product data:

Product Type: Expression Plasmids
Product Name: C11orf53 (NM_198498) Human Tagged ORF Clone
Tag: TurboGFP
Symbol: C11orf53
Mammalian Cell Selection: Neomycin
Vector: pCMV6-AC-GFP (PS100010)
E. coli Selection: Ampicillin (100 ug/mL)
ORF Nucleotide Sequence: >RG208142 representing NM_198498
 Red=Cloning site Blue=ORF Green=Tags(s)

TTTTGTAATACGACTCACTATAGGGCGGCCGGAATTCGTCGACTGGATCCGGTACCGAGGAGATCTGCC
 GCC**CGATCGCC**

ATGCCAGGTTTCGCCGGTCACGTCAGGTTACTACGGTGTGAGAAGATCTTTCTTATCTGACTCAGACTTCC
 ACAACAGTAAACAGTTTTCAAATGACGTCTACACCTCCAGCGTGGGAAGCCGTTTCCCTGTGAGTCCTC
 CGCAGGGCAGAGCCATGCGGCTCTCTGGAGCCCTACTCCCCAGGAGCCCTACGGAGACTACCGGCT
 CCGGCGCTGACGCCAACGCGGGCTCTCTGTTCAGCGCCTCGCCCTACCGCCGCTCTGCCACCGCCCT
 TCCCCGGAGACCCAGCTCACTTCTATTTAGGGACTCATGGGAGCAGACGTTGCCTGACGGTCTCAGCCA
 GCCTGACCCTGTGTCTGCCGATGCCCTGCTGACCTTGCCACCCAGCACGAGTTGCCTCTCCAGCTTGAG
 TCCGGGAGCATCGCCAGCACAGGGCTCAAGCTGGGGTTCATCCCTGGCTGGGGCTCAGTCATACTCGC
 TGCATGCTCTGGAAGATCTGCACCACTCCGGGGTACCCTACCCGCTCCTTACCCCTTACCCCTTT
 CATGACGGTGTCAAATGACCTACCGCCCAAGGTGGGGCCACTCTCCCAGATGAGGAAGCAGACCCGGT
 TCCCTCCATGACCCTTCCCTTGGGTGAAAGAAGATGGGAGTATTGCCTGGGGTTCATATGAATGCCGCA
 GAGCTTAT

ACGCGTACGCGGCCGCTCGAG - GFP Tag - GTTTAA

Protein Sequence: >RG208142 representing NM_198498
 Red=Cloning site Green=Tags(s)

MPGSPVTSGLYGVRRSFLSDSDFHNSKQFSNDVYTSSVGKPFPCCESSAGQSHAALLEPYFPQEPYGDYRP
 PALTPNAGSLFSASPLPPLPPFPDPGPAHFLFRDSWEQTLDPGLSQPDPVSADALLTLPSTSCLSQLE
 SGSIAQHRGSSWSSLAGAQSLSHALEDLHHTPGYPTPPYPFPTFMTVSNLPPKVGPLSPDEEADTG
 SLHDPSPWVKEDGSIWGSYECRRAY

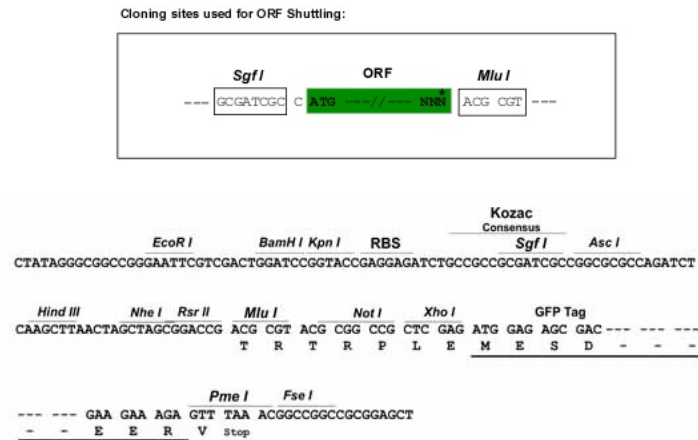
TRTRPLE - GFP Tag - V



[View online »](#)

Restriction Sites: SgfI-MluI

Cloning Scheme:



ACCN: NM_198498

ORF Size: 708 bp

OTI Disclaimer: The molecular sequence of this clone aligns with the gene accession number as a point of reference only. However, individual transcript sequences of the same gene can differ through naturally occurring variations (e.g. polymorphisms), each with its own valid existence. This clone is substantially in agreement with the reference, but a complete review of all prevailing variants is recommended prior to use. [More info](#)

OTI Annotation: This clone was engineered to express the complete ORF with an expression tag. Expression varies depending on the nature of the gene.

Components: The ORF clone is ion-exchange column purified and shipped in a 2D barcoded Matrix tube containing 10ug of transfection-ready, dried plasmid DNA (reconstitute with 100 ul of water).

Reconstitution Method:

1. Centrifuge at 5,000xg for 5min.
2. Carefully open the tube and add 100ul of sterile water to dissolve the DNA.
3. Close the tube and incubate for 10 minutes at room temperature.
4. Briefly vortex the tube and then do a quick spin (less than 5000xg) to concentrate the liquid at the bottom.
5. Store the suspended plasmid at -20°C. The DNA is stable for at least one year from date of shipping when stored at -20°C.

RefSeq: [NM_198498.2](#)

RefSeq Size: 1106 bp

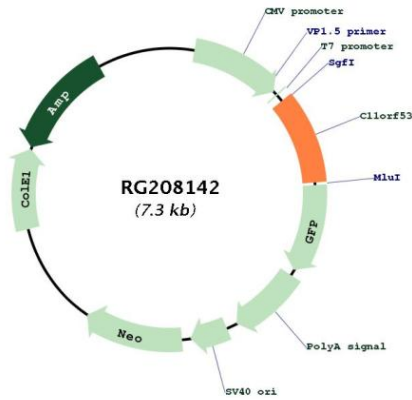
RefSeq ORF: 867 bp

Locus ID: 341032

UniProt ID: [Q8IXP5](#)

Cytogenetics: 11q23.1

Product images:



Circular map for RG208142