

Product datasheet for **RG208140**

ZNF77 (NM_021217) Human Tagged ORF Clone

Product data:

Product Type:	Expression Plasmids
Product Name:	ZNF77 (NM_021217) Human Tagged ORF Clone
Tag:	TurboGFP
Symbol:	ZNF77
Synonyms:	pT1
Mammalian Cell Selection:	Neomycin
Vector:	pCMV6-AC-GFP (PS100010)
E. coli Selection:	Ampicillin (100 ug/mL)



[View online »](#)

ORF Nucleotide Sequence:

>RG208140 representing NM_021217
 Red=Cloning site Blue=ORF Green=Tags(s)

TTTTGTAATACGACTCACTATAGGGCGGCCGGAATTCGTCGACTGGATCCGGTACCGAGGAGATCTGCC
 GCC**CGGATCGCC**

ATGGACTGCGTGATCTTTGAGGAAGTGGCTGTGAACCTCACCCAGAAGAGTGGCATTGCTGGATCATG
 CTCAGAGGAGCCTCTACAGAGATGTGATGCTGGAGACCTGCAGGAACCTTGCCTCCTGGATTGTTACAT
 TTATGTTAGAACCAGTGGATCAAGTTCTCAGAGGGACGTTTTTGGGAATGGAATATCCAATGATGAAGAA
 ATTGTAAGTTTACAGGAAGTATTCTGGTCTATTTTTGGAGAAAATTGGAGATTTGATAACACTGGAG
 ATCAGCACAAAATCCACAGAGGCATCTGAGAAGTCACTGGGGAGACTCTGTGAAAGTAATGAAGGTCA
 TCAATGCGGAGAGACCTTGAAGCAGACTGCGAACCTTCTGTGCACAAGAGTTACCCTACCGAAGCTAAA
 CCCTCTGAGTGCCTAAGTGTGGCAAAGCCTTCGAGAATCGGCAGAGATCTCACACTGGACAGAGACCGT
 GTAAGGAATGTGGCAAGCCTGCAGCTGCCTCTCCTGCCAAAGCCCTCCTATGAAAACGCAGACTGTAGA
 GAAACCCTGTAATTGCCAGGACTCAAGGACAGCATCTGTGACATACGTGAAAAGTCTCAGCAGTAAAAAG
 TCTTATGAATGTGAGAAATGTGGAAAAGCTTTCATTTGTCCTCATCTTTCAGGGGACATGTGAATAGTC
 ATCATGGGCAGAAAACCCATGCATGTAAAGTATGTGGGAAGACCTTTATGTATTACTCCTACCTACACG
 GCACGTAAGAACTCACACAGGAGAGAAAACCTATGAGTGTAAAGAGTGTGGGAAAGCCTTCAGCTGTCCC
 TCGTACTTTTCGAGAACATGTGAGAACACACACTGGAGAGAAAACCGTATGAATGTAAGCATTGTGGAAAAT
 CATTACAGTGTACTCCTCCTTTAGAGATCACGTGAGGACGCACACTGGAGAGAAAACCGTGTGAGTAA
 ACATTGCGGAAAAGCGTTCACTTGTACTCGTCTCTTCGAGAACATGGGAGAACGCACAGTGGAGAGAAA
 CCCTATGAATGTAAGGAATGTGGCAAAGCCTTCAGGTACCCCTCCTCTGCGAGCACACATGAGAATGC
 ACACCGGAGAGAGAAGCCCTATGTGTGCAAGCAGTGTGGGAAGCCCTTCGGATGTCCCACTTACTTTAGAAG
 ACATGTGAAAACACACAGCGGGGTGAAGCCCTATCAATGTAAGAGTGTGGGAAAAGCCTACAGTTTTTCC
 TCCTCCCTTCGAATCCAGTGTGAGACGCATACTGGAGAGAAAGCCCTTTGAGTGTAAAGCATTGTGGGAAAAG
 CCTTCAGTGTCACTCCTCCCTTCGAGAGCATGTGCAACCCACAGCGGAGAGAAAACCGTACGAATGTAA
 TCAATGTGGGAAAAGCCTTCAGCCACGCTCAGTACTTTCAAAGCATGTGAGATCACACAGTGGGGTCAAA
 CCCTACGAATGTACTGAATGTGGGAAAAGCCTACAGTTGTTCTCGTCCCTTCGTGTGCACGTGAGAACGC
 ACTGGAGAGAGACCGTATGAATGCAAGCAGTGTGGGAAAACCTTCAGGTATCTCGCATCGCTTCAAGC
 ACATGTGAGAACACATGTGGAGCG

ACGCGTACGCGGCCGCTCGAG - GFP Tag - GTTTAA

Protein Sequence:

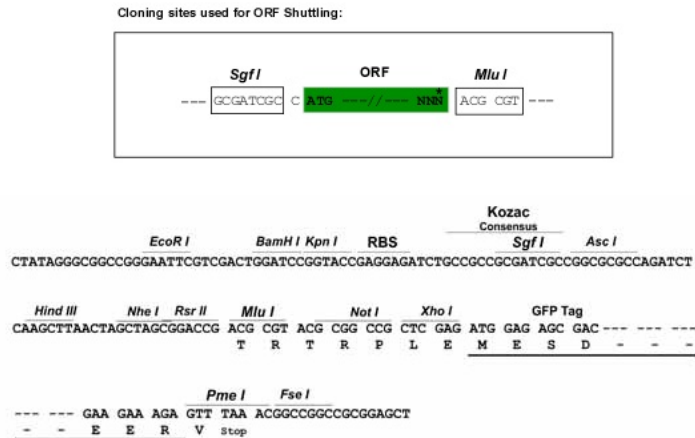
>RG208140 representing NM_021217
 Red=Cloning site Green=Tags(s)

MDCVIFEEVAVNFTPEEWALLDHAQRSLYRDVMLETCRNLASLDCYIYVRTSGSSSQRDVFNNGISNDEE
 IVKFTGSDSWSIFGENWRFDNTGDQHQIPQRHLRSQLGRLCESNEGHQCGETLSQTANLLVHKSYPTEAK
 PSECTKCGKAFENRQSRHTGQRPCKECCGQACSCSLSCQSPPMKTQTVEKPCNCQDSRTASVTYVKSLSK
 SYECQKCGKAFICPSSFRGHVNSHHGQKTHACKVCGKTFMYYSYLTRHVRTHTGEKPYECKECCGKAFSCP
 SYFREVHVRTHTGEKPYECKHCGKSFSCYSSFRDHVRTHTGEKPCQCKHCGKAFTCYSSLREHGRTHSGEK
 PYECKECCGKAFRYPSSLRAHMRMHTGEKPYVCKQCGKAFGCPTYFRRHVKTHSGVKPYQCKECCGKAYSFS
 SSLRIHVRTHTGEKPFECKHCGKAFSCHSSLREHVRTHSGEKPYECNQCGKAFSHAQYFQKHVRSHSGVK
 PYECTECGKAYSCSSSLRVHVRTHTGERPYECKQCGKTFRYLASLQAHVRTHAGA

TRTRPLE - GFP Tag - V

Restriction Sites:

Sgfl-MluI

Cloning Scheme:


ACCN: NM_021217

ORF Size: 1635 bp

OTI Disclaimer: The molecular sequence of this clone aligns with the gene accession number as a point of reference only. However, individual transcript sequences of the same gene can differ through naturally occurring variations (e.g. polymorphisms), each with its own valid existence. This clone is substantially in agreement with the reference, but a complete review of all prevailing variants is recommended prior to use. [More info](#)

OTI Annotation: This clone was engineered to express the complete ORF with an expression tag. Expression varies depending on the nature of the gene.

Components: The ORF clone is ion-exchange column purified and shipped in a 2D barcoded Matrix tube containing 10ug of transfection-ready, dried plasmid DNA (reconstitute with 100 ul of water).

Reconstitution Method:

1. Centrifuge at 5,000xg for 5min.
2. Carefully open the tube and add 100ul of sterile water to dissolve the DNA.
3. Close the tube and incubate for 10 minutes at room temperature.
4. Briefly vortex the tube and then do a quick spin (less than 5000xg) to concentrate the liquid at the bottom.
5. Store the suspended plasmid at -20°C. The DNA is stable for at least one year from date of shipping when stored at -20°C.

RefSeq: [NM_021217.1](#), [NP_067040.1](#)

RefSeq Size: 2057 bp

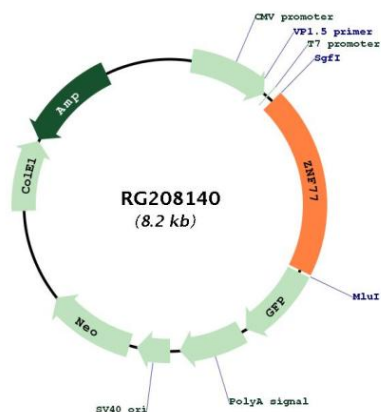
RefSeq ORF: 1638 bp

Locus ID: 58492

UniProt ID: [Q15935](#)

Cytogenetics: 19p13.3
Protein Families: Transcription Factors
Gene Summary: May be involved in transcriptional regulation.[UniProtKB/Swiss-Prot Function]

Product images:



Circular map for RG208140