

## Product datasheet for **RG208132**

### **GPR37L1 (NM\_004767) Human Tagged ORF Clone**

#### **Product data:**

Product Type:	Expression Plasmids
Product Name:	GPR37L1 (NM_004767) Human Tagged ORF Clone
Tag:	TurboGFP
Symbol:	GPR37L1
Synonyms:	ET(B)R-LP-2; ETBR-LP-2; ETBRLP2
Mammalian Cell Selection:	Neomycin
Vector:	pCMV6-AC-GFP (PS100010)
E. coli Selection:	Ampicillin (100 ug/mL)



[View online »](#)

**ORF Nucleotide Sequence:**

>RG208132 representing NM\_004767  
 Red=Cloning site Blue=ORF Green=Tags(s)

TTTTGTAATACGACTCACTATAGGGCGGCCGGAATTCGTCGACTGGATCCGGTACCGAGGAGATCTGCC  
 GCC**GCGATCGCC**

ATGCGGTGGCTGTGGCCCTGGCTGTCTCTCTTGTGCTGATTTTGGCTGTGGGGCTAAGCAGGGTCTCTG  
 GGGGTGCCCCCTGCACCTGGGCAGGCACAGAGCCGAGACCCAGGAGCAGCAGAGCCGATCCAAGAGGGG  
 CACCGAGGATGAGGAGGCCAAGGGCGTGCAGCAGTATGTGCCTGAGGAGTGGGCGGAGTACCCCCGGCC  
 ATTCACCCCTGCTGGCTGCAGCCAACCAAGCCCTTGGTGGCCACCAGCCCTAACCCCGCAGGGATGGGG  
 GCACCCAGACAGTGGGCAGGAAGTGGGGCAATCTGACAGGAGCACCAGGGCAGAGGTACAGATCCA  
 GAACCCCTGTATCCGGTGACCGAGAGCTCTACAGTGCCTATGCCATCATGCTTCTGGCGTGGTGGT  
 TTTGGGTGGCATTGTGGCAACCTGTCGGTCATGTGCATCGTGTGCACAGCTACTACCTGAAGAGTG  
 CCTGGAACCTCATCCTTGCCAGCCTGGCCCTCTGGGATTTCTGGTCTCTTTTTCTGCCTCCCTATTGT  
 CATCTTCAACGAGATACCAAGCAGAGGCTACTGGGTGACGTTTCTTGTGCTGCCGTGCCCTTCATGGAG  
 GTCCTCTCTGGGAGTACGACTTTCAGCCTCTGTGCCCTGGGATTGACCGCTTCCACGTGGCCACCA  
 GCACCCCTGCCAAGGTGAGGCCCATCGAGCGGTGCCAATCCATCCTGGCCAAGTTGGCTGTCATCTGGGT  
 GGGCTCCATGACGCTGGCTGTGCCTGAGCTCCTGCTGTGGCAGCTGGCACAGGAGCTGCCCCACCATG  
 GGCACCCCTGGACTCATGCATCATGAAACCTCAGCCAGCCTGCCCGAGTCCCTGTATTACTGGTGATGA  
 CCTACCAGAACGCCCGCATGTGGTGGTACTTTGGCTGCTACTTCTGCCTGCCATCCTCTTCACAGTCAC  
 CTGCCAGTGGTACATGGCGGGTGCAGGGCCCTCCAGGGAGGAAGTCAGAGTGCAGGGCCAGCAAGCAC  
 GAGCAGTGTGAGAGCCAGCTCAACAGCACCGTGGTGGCCCTGACCGTGGTCTACGCCTTCTGCACCCCTC  
 CAGAGAACGTCTGCAACATCGTGGTGGCTACCTCTCCACCGAGCTGACCCGCCAGACCCCTGGACCTCT  
 GGGCCTCATCAACGAGTCTCCACCTTCTCAAGGGCGCCATCACCCAGTGTGCTCCTTTGCATCTGC  
 AGGCCGCTGGGCCAGGCCTTCTGGACTGCTGCTGCTGCTGCTGCTGAGGAGTGCAGGGGGGCTTCGG  
 AGGCCTCTGCTGCCAATGGGTGGACAACAAGCTCAAGACCGAGGTGTCCTCTTCCATCTACTTCCACAA  
 GCCCAGGAGTACCCCCACTCTGCCCTGGGCACACCTTGC

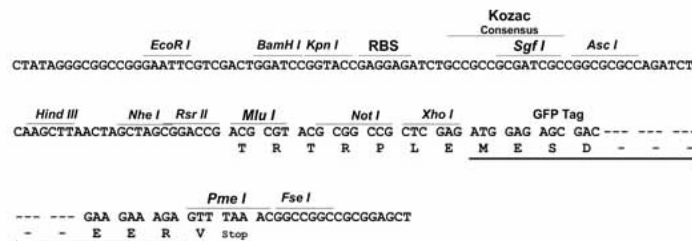
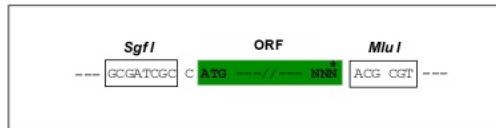
**ACGCGTACGCGGCCGCTCGAG** - GFP Tag - GTTTAA

**Restriction Sites:**

SgfI-MluI

**Cloning Scheme:**

Cloning sites used for ORF Shutting:

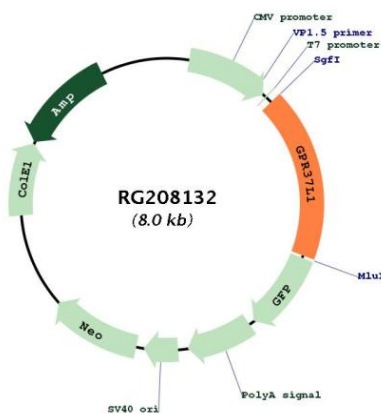

**ACCN:**

NM\_004767

<b>ORF Size:</b>	1443 bp
<b>OTI Disclaimer:</b>	<p>Due to the inherent nature of this plasmid, standard methods to replicate additional amounts of DNA in E. coli are highly likely to result in mutations and/or rearrangements. Therefore, OriGene does not guarantee the capability to replicate this plasmid DNA. Additional amounts of DNA can be purchased from OriGene with batch-specific, full-sequence verification at a reduced cost. Please contact our customer care team at <a href="mailto:custsupport@origene.com">custsupport@origene.com</a> or by calling 301.340.3188 option 3 for pricing and delivery.</p> <p>The molecular sequence of this clone aligns with the gene accession number as a point of reference only. However, individual transcript sequences of the same gene can differ through naturally occurring variations (e.g. polymorphisms), each with its own valid existence. This clone is substantially in agreement with the reference, but a complete review of all prevailing variants is recommended prior to use. <a href="#">More info</a></p>
<b>OTI Annotation:</b>	This clone was engineered to express the complete ORF with an expression tag. Expression varies depending on the nature of the gene.
<b>Components:</b>	The ORF clone is ion-exchange column purified and shipped in a 2D barcoded Matrix tube containing 10ug of transfection-ready, dried plasmid DNA (reconstitute with 100 ul of water).
<b>Reconstitution Method:</b>	<ol style="list-style-type: none"> <li>1. Centrifuge at 5,000xg for 5min.</li> <li>2. Carefully open the tube and add 100ul of sterile water to dissolve the DNA.</li> <li>3. Close the tube and incubate for 10 minutes at room temperature.</li> <li>4. Briefly vortex the tube and then do a quick spin (less than 5000xg) to concentrate the liquid at the bottom.</li> <li>5. Store the suspended plasmid at -20°C. The DNA is stable for at least one year from date of shipping when stored at -20°C.</li> </ol>
<b>RefSeq:</b>	<a href="#">NM_004767.2</a> , <a href="#">NP_004758.2</a>
<b>RefSeq Size:</b>	2516 bp
<b>RefSeq ORF:</b>	1446 bp
<b>Locus ID:</b>	9283
<b>UniProt ID:</b>	<a href="#">O60883</a>
<b>Cytogenetics:</b>	1q32.1
<b>Protein Families:</b>	Druggable Genome, GPCR, Transmembrane

**Gene Summary:**

G-protein coupled receptor (PubMed:27072655). Has been shown to bind the neuroprotective and glioprotective factor prosaposin (PSAP), leading to endocytosis followed by an ERK phosphorylation cascade (PubMed:23690594). However, other studies have shown that prosaposin does not increase activity (PubMed:27072655, PubMed:28688853). It has been suggested that GPR37L1 is a constitutively active receptor which signals through the guanine nucleotide-binding protein G(s) subunit alpha (PubMed:27072655). Participates in the regulation of postnatal cerebellar development by modulating the Shh pathway (By similarity). Regulates baseline blood pressure in females and protects against cardiovascular stress in males (By similarity). Mediates inhibition of astrocyte glutamate transporters and reduction in neuronal N-methyl-D-aspartate receptor activity (By similarity).[UniProtKB/Swiss-Prot Function]

**Product images:**

Circular map for RG208132