

## Product datasheet for **RG208116**

### **PANK4 (NM\_018216) Human Tagged ORF Clone**

#### **Product data:**

Product Type:	Expression Plasmids
Product Name:	PANK4 (NM_018216) Human Tagged ORF Clone
Tag:	TurboGFP
Symbol:	PANK4
Mammalian Cell Selection:	Neomycin
Vector:	pCMV6-AC-GFP (PS100010)
E. coli Selection:	Ampicillin (100 ug/mL)



[View online »](#)

**ORF Nucleotide Sequence:**

>RG208116 representing NM\_018216  
 Red=Cloning site Blue=ORF Green=Tags(s)

TTTTGTAATACGACTCACTATAGGGCGGCCGGGAATTCGTCGACTGGATCCGGTACCGAGGAGATCTGCC  
 GCC**GCGATCGCC**

ATGGCGGAGTGTGGAGCGAGCGGCAGCGGGAGCAGCGGGACAGTCTGGACAAGAGCATCACGCTGCCCC  
 CCGACGAGATCTTCCGCAACCTGGAGAACGCCAAGCGCTTCGCCATCGACATAGGCGGGTCTTAACCAA  
 GCTGGCCTACTATTCAACGGTACAGCACAAAGTCGCCAAGGTGCGGTCTTTCGACCACTCCGGAAAAGGAC  
 ACAGAACGTGAACATGAGCCGCCCTATGAGATTCAGTTCAAGAAGAGATCACTGCTCGACTGCACTTCA  
 TTAAGTTTGAGAAATACCTACATCGAAGCCTGCCTGGACTTCATCAAAGACCATCTCGTCAACACAGAGAC  
 CAAGGTCAATCCAGGCGACCGGGGCGGGGCTACAAGTTCAAGGACCTCATCGAAGAGAAGCTGCGGCTG  
 AAAGTCGACAAGGAGGACGTGATGACGTGCCTGATTAAGGGGTGCAACTTCGTGCTCAAGAACATCCCC  
 ATGAGGCCTTCGTGTACCAGAAGGATCCGACCCTGAGTTCGGTTCAGACCAACCACCCACATTTT  
 CCCCTATCTTCTGTCAATATCGGCTCTGGAGTCTCCATCGTGAAGGTGGAGACGGAGGACAGGTTGAG  
 TGGGTGCGCGGCAGCTCCATTGGAGGCGGCACCTTCTGGGGGCTTGGCGCTCTGCTACCAAAAACGAAGA  
 AGTTTGACGAGCTCCTGCACCTGGCCTCGAGGGGCCAGCACAGCAATGTGGACATGCTGGTGCGGGACGT  
 CTACGGCGCGCCACCAGACTCTCGGGCTGAGCGGGAACCTCATCGCCAGCAGCTTCGGGAAGTCGGCC  
 ACCGCGACCAAGAGTTCTCAAAGAAGACATGGCGAAGAGCCTGCTGCACATGATCAGCAACGACATTG  
 GGCAGCTGGCCTGCCTCCACGCACGGCTGCACAGCCTGGACCGGTGACTTTGGAGGCTCTTTATCCG  
 GGGCCACCCGTGACCATGCGCACCATCACCTATAGCATCAACTTCTTCTCAAGGGGAAGTGCAGGCG  
 CTGTTTCTGAGGCACGAAGGCTACCTGGGAGCCATCGGAGCGTTCCTGAAAGGAGCTGAGCAGGACAATC  
 CTAACCAAGTACAGCTGGGGAGAGAATAATGCAGGCAGCTCCGGGCTGATGAGTGCATCACCCGAGCTCGG  
 CCGGGCGCAGCGGGCGCGGAGTGGCACTTTTACTTGGTGGAAATGGACCGGCTGGAGAGGCCACTGGTT  
 GACCTGCCGCTCCTCCTGGACCCGCCCTCTACGTGCCGACACGGTGGACCTCACCGATGACGCTCTGG  
 CCCGAAAATACTGGCTCACCTGCTTTGAGGAGGCCCTGGACGGGGTAGTGAAGCGCGCAGTGGCGAGCCA  
 GCCAGACTCTGTGGATGCAGCCGAGAGGGCGGAGAAGTTCGGCAGAAAGTACTGGAACAAGCTTCAGACC  
 CTGAGGCAGCAGCCCTTCGCTATGGGACCCTGACCGTGCAGCAGCTGCTGGACACCAGGGAGCACTGTC  
 TGAACGAGTTCAACTTCCCGGATCCCTACTCAAAGTGAAGCAGCGGGAGAATGGCGTGGCGCTGAGGTG  
 CTTCCCCGGGTGCTGCGCTCCCTGGACGCGCTGGCTGGGAGGAACGGCAGCTGGCGCTGGTGAAGGC  
 CTCTGGCGGGGAATGTCTTCGACTGGGGGCCAAAGCCGTGTCTGCTGTCTTGAATCCGACCCCTACT  
 TTGGGTTTGAAGAAGCAAAGAGGAAGTTACAAGAAAGACCCTGGCTCGTGGATTCTACAGCGAGTGGCT  
 TCAGAGATTAAGGGGCCCTCATAAATGTGCCTTAATTTTCGAGATAACAGTGAATAGACATCATT  
 TTGGGAGTCTTCCCTTTGTGAGGGAGCTACTCCTTAGAGGGACAGAGGTCATCCTGGCGTGAACCTCAG  
 GCCCGCCCTGAACGACGTGACCCACAGCGAGTCCCTCATCGTGGCAGAGCGTATTGCGGGCATGGACCC  
 TGTGCTGCACTCTGCGCTCCAGGAAGAGAGGCTGCTGCTGGTGCAGACGGGCTCCAGTCCCCGTGCCTC  
 GACCTCAGCCGCTGGATAAGGGGCTGGCCGACTGGTGGGGAGCGTGGCGGGATCTGGTGGTCAATCG  
 AGGGCATGGGCCGTGCTGTCCACACAACTACCACGACCCCTGCGCTGCGAGAGCCTCAAGCTGGCCGT  
 CATCAAGAACCGTGGCTGGCCGAGCGGCTGGGCGCCGGCTCTCAGCGTCATCTCAAGTACGAGGTC  
 CCAGCCGAG

AG**CGGACCG**ACGCGTACGCGGCCGCTCGAG - GFP Tag - GTTTAA

**Protein Sequence:** >RG208116 representing NM\_018216  
Red=Cloning site Green=Tags(s)

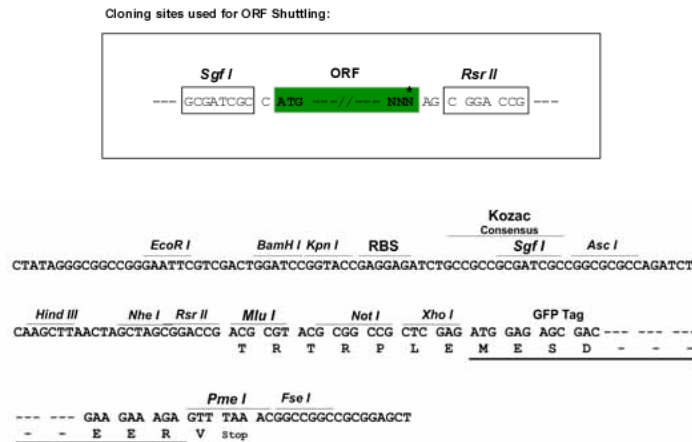
```

MAECGASGSGSSGDSLDKSITLPPDEIFRNLENAKRFAIDIGGSLTKLAYYSTVQHKVAKVRSFDHSGKD
TEREHEPPYEISVQEEITARLHFIFKENTYIEACLDKDFIKDHLVNTETKVIQATGGGAYKFKDLIEEKLRL
KVDKEDVMTCLIKGCNFKVKNIPHEAFVYQKDSDFEFRTQNHPIFPYLLVNIIGSGVSIKVVETEDRFE
WVGSSIGGGTFWGLGALLTKTKKFDLHLSRQHSNVDMMLVRDVYGGAHQTLGLSGNLIASSFGKSA
TADQEFSKEDMAKSLHMSNDIGQLACLHARLHSLDRVYVGGFFIRGHPVTMRTITYSINFFSKGEVQA
LFLRHEGYLGAIGAFKGAEQDNPQYSWGNYAGSSGLMSASPELGPAQRARSQTFDLEMDRLERPLV
DLPLLLDPPSYVPDVTDLTDDALARKYWLTCFEEALDGVVKRAVASQPDSVDAAEAEKFRQKYWNKLQT
LRQQPFAYGTLTVRSLDTRHCLNEFNFPDPYSKVKQRENGVALRCFPGVVRSLDALGWEERQALVKG
LLAGNVFDWGAKAVSAVLESDPYFGFEEAKRKLQERPWLVDYSEWLQRLKGPCHKALIFADNSGIDII
LGVFPFVRELLLRGTEVILACNSGPALNDVTHSESLIVAERIAAGMDPVVHSALQEERLLLVTGSSSPCL
DLSRLDKGLAALVREGADLVVIEGMGRAVHTNYHAALRCESLKLAVIKNAWLAERLGGRLFSVIFKYEV
PAE
    
```

SGPTRRRLE - GFP Tag - V

**Restriction Sites:** SgfI-RsrII

**Cloning Scheme:**



**ACCN:** NM\_018216

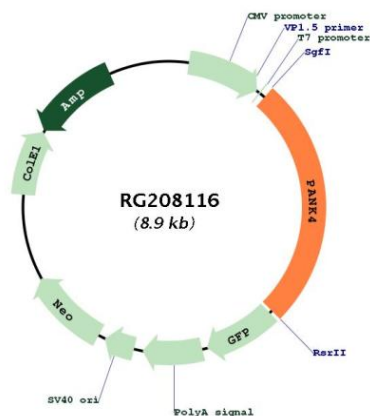
**ORF Size:** 2319 bp

**OTI Disclaimer:** The molecular sequence of this clone aligns with the gene accession number as a point of reference only. However, individual transcript sequences of the same gene can differ through naturally occurring variations (e.g. polymorphisms), each with its own valid existence. This clone is substantially in agreement with the reference, but a complete review of all prevailing variants is recommended prior to use. [More info](#)

**OTI Annotation:** This clone was engineered to express the complete ORF with an expression tag. Expression varies depending on the nature of the gene.

- Components:** The ORF clone is ion-exchange column purified and shipped in a 2D barcoded Matrix tube containing 10ug of transfection-ready, dried plasmid DNA (reconstitute with 100 ul of water).
- Reconstitution Method:**
1. Centrifuge at 5,000xg for 5min.
  2. Carefully open the tube and add 100ul of sterile water to dissolve the DNA.
  3. Close the tube and incubate for 10 minutes at room temperature.
  4. Briefly vortex the tube and then do a quick spin (less than 5000xg) to concentrate the liquid at the bottom.
  5. Store the suspended plasmid at -20°C. The DNA is stable for at least one year from date of shipping when stored at -20°C.
- RefSeq:** [NM\\_018216.1](#), [NP\\_060686.1](#)
- RefSeq Size:** 2642 bp
- RefSeq ORF:** 2322 bp
- Locus ID:** 55229
- UniProt ID:** [Q9NVE7](#)
- Cytogenetics:** 1p36.32
- Protein Families:** Druggable Genome
- Protein Pathways:** Metabolic pathways, Pantothenate and CoA biosynthesis
- Gene Summary:** This gene encodes a protein belonging to the pantothenate kinase family. Pantothenate kinase is a key regulatory enzyme in the biosynthesis of coenzyme A (CoA) in bacteria and mammalian cells. It catalyzes the first committed step in the universal biosynthetic pathway leading to CoA and is itself subject to regulation through feedback inhibition by CoA. This family member is most abundant in muscle but is expressed in all tissues. [provided by RefSeq, Jul 2008]

### Product images:



Circular map for RG208116