

## Product datasheet for **RG208089**

### TFAP2E (NM\_178548) Human Tagged ORF Clone

#### Product data:

**Product Type:** Expression Plasmids  
**Product Name:** TFAP2E (NM\_178548) Human Tagged ORF Clone  
**Tag:** TurboGFP  
**Symbol:** TFAP2E  
**Synonyms:** AP2E  
**Mammalian Cell Selection:** Neomycin  
**Vector:** pCMV6-AC-GFP (PS100010)  
**E. coli Selection:** Ampicillin (100 ug/mL)  
**ORF Nucleotide Sequence:** >RG208089 representing NM\_178548  
 Red=Cloning site Blue=ORF Green=Tags(s)

TTTTGTAATACGACTCACTATAGGGCGGCCGGAATTCGTCGACTGGATCCGGTACCGAGGAGATCTGCC  
 GCC**CGATCGCC**

ATGCTGGTGCACACCTACTCCGCCATGGAGCGCCCGACGGGCTGGGAGCAGCTGCCGGCGGGGCCCGCC  
 TGTCGTCTCTGCCCCAGGCGGCCACGGGCCGGCGCCCCGCTCTGCCACACGCCGGCGCCACAGCTGC  
 CGCCGAATTCAGCCGCCCTACTTCCCGCCGCCCTACCCGCAGCCACCGCTGCCCTACGGTCAGGCGCC  
 GACGCCCGCGAGCCTTCCACCTGGCAGGGGACCCATATGGCGGCCCTGGCGCCCTGGCGCAGCCGC  
 AGCCTCCTCAGGCGCCCTGGGCCGGCCCGCGCAGCCGCCCGCCACGAGGAGCCTCCCGCCCTGCT  
 GGCACCGCCCGCCCGCCCTGGCCTTGACCCGCGCCGTGACTATGCCACTGCCGTGCCCGGCTCCTG  
 CACGGCCTGGCCGACGGCGCGCACGGCCTGGCAGACGCACCTCTCGGCCCTCCGGGGCTGGCGGGCC  
 CCGGTCTGGAGGACCTGCAGGCAATGGACGAGCCGGGAATGAGCCTCCTAGACCAGTCCGTGATCAAGAA  
 AGTGCCCATCCCCCAAAGCCAGCAGCCTCTCAGCCCTCCTTGCCAAAGACAGCCTGGTGGGCGGC  
 ATCACAATCCTGGTGGTCTTCTGCTCCGTGCCCGGCCGGCTTCACTGCTCAGCTCAACGTCCAAGT  
 ACAAGGTGACGGTGGGGGAGGTGCAGCGCGACTCTCGCTCCGAGTGCCTCAACGCCTCCCTCCTGG  
 GGTGTCTCCGACGGGCAAGTCAAAAATGGGGCCGGTGTTCGGGAACGGTTAGAGAAGATTGGG  
 CTC AACCTGCCAGCTGGCCGTGCAAGGCCCAATGTGACGCTGCTGACTTCGTAAGTGAAGGAGAGG  
 CCGTGCACCTGGCCCGAGACTTCGGTTACGTCTGTGAGACGGAGTCCAGCCAAGGCAGCTGCCGAGTA  
 CCTGTGCCACAGCAGCTGACCCGGGGAGCTGCACAGCCGCAAGAGCATGCTGCTGGTGCCAAGCAG  
 ATCTGCAAGGAGTTGCAGACTTGATGGCTCAGGACCGCTCACCGCTGGGCAACAGCCGCCAGCACTCA  
 TCCTGGAGCCCGAGTACAGAGCTGCTTGACACACTTTAGCCTCATACCCATGGCTTCGGTGGCCTGC  
 CATCTGTGCTGCCCTCACTGCCTCCAGAACTATTTGCTGGAGTCACTCAAGGGGCTGGACAAGATGTT  
 CTAAGCAGTGTGGCAGTGGCATGGTGAACCAAGGCTTCGGAGAAGGATGCCAAGCATCGAAA

**ACGCGTACGCGGCCGCTCGAG** - GFP Tag - GTTTAA



[View online »](#)

**Protein Sequence:** >RG208089 representing NM\_178548  
Red=Cloning site Green=Tags(s)

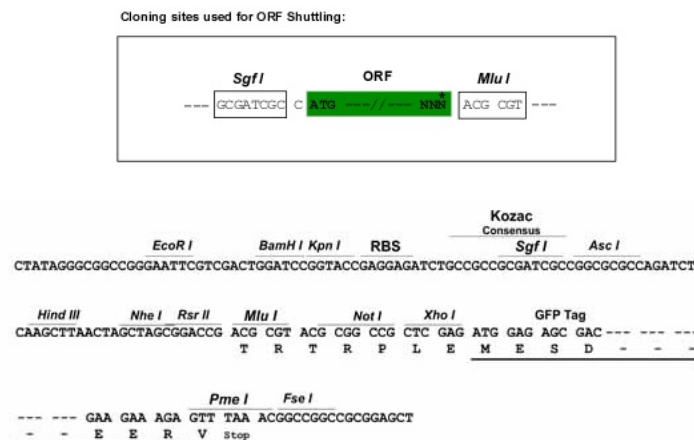
```
MLVHTYSAMERPDGLGAAAGGARLSSLPQAAYGPAPPLCHTPAATAAAEFQPPYFPPYPQPPLPYGQAP
DAAAAPHLADGDPYGGGLAPLAQPQPQAAWAAPRAAARAHEEPPGLLAPPARALGLDPRRDYATAVPRLL
HGLADGAHGLADAPLGLPGLAAAAPGLEDLQAMDEPGMSLLDQSVIKKVPVIPSASSLSALSLAKDSL VGG
ITNPGEVFCVSPGRLSLLSSTSKEYKVTVEVQRRLLSPPECLNASLLGGVLRRAKSKNGGRCLRERLEKIG
LNLPAGRRKAANVTLLTSLVEGEAVHLARDFGYVCETEFPAKAAAAYLRCQHADPGELHSRKSMLLAQKQ
ICKEFADLMAQDRSPLGNSRPALILEPGVQSCLTHFSLITHGFGGPAICAALTAFAQNYLLES LKGLDKMF
LSSVSGHGETKASEKDAKHRK
```

TRTRPLE – GFP Tag – V

**Restriction Sites:**

SgfI-MluI

**Cloning Scheme:**



**ACCN:** NM\_178548

**ORF Size:** 1326 bp

**OTI Disclaimer:** The molecular sequence of this clone aligns with the gene accession number as a point of reference only. However, individual transcript sequences of the same gene can differ through naturally occurring variations (e.g. polymorphisms), each with its own valid existence. This clone is substantially in agreement with the reference, but a complete review of all prevailing variants is recommended prior to use. [More info](#)

**OTI Annotation:** This clone was engineered to express the complete ORF with an expression tag. Expression varies depending on the nature of the gene.

**Components:** The ORF clone is ion-exchange column purified and shipped in a 2D barcoded Matrix tube containing 10ug of transfection-ready, dried plasmid DNA (reconstitute with 100 ul of water).

**Reconstitution Method:**

1. Centrifuge at 5,000xg for 5min.
2. Carefully open the tube and add 100ul of sterile water to dissolve the DNA.
3. Close the tube and incubate for 10 minutes at room temperature.
4. Briefly vortex the tube and then do a quick spin (less than 5000xg) to concentrate the liquid at the bottom.
5. Store the suspended plasmid at -20°C. The DNA is stable for at least one year from date of shipping when stored at -20°C.

**RefSeq:** [NM\\_178548.4](#)

**RefSeq Size:** 2189 bp

**RefSeq ORF:** 1329 bp

**Locus ID:** 339488

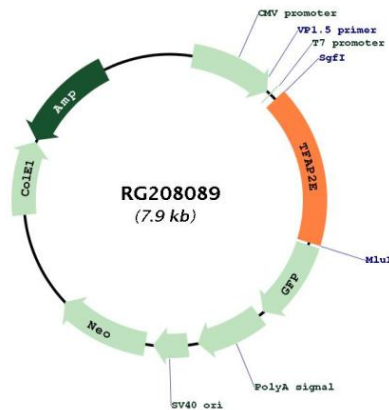
**UniProt ID:** [Q6VUC0](#)

**Cytogenetics:** 1p34.3

**Protein Families:** Transcription Factors

**Gene Summary:** Sequence-specific DNA-binding protein that interacts with inducible viral and cellular enhancer elements to regulate transcription of selected genes. AP-2 factors bind to the consensus sequence 5'-GCCNNNGGC-3' and activate genes involved in a large spectrum of important biological functions including proper eye, face, body wall, limb and neural tube development. They also suppress a number of genes including MCAM/MUC18, C/EBP alpha and MYC. AP-2-epsilon may play a role in the development of the CNS and in cartilage differentiation (By similarity).[UniProtKB/Swiss-Prot Function]

### Product images:



Circular map for RG208089