

Product datasheet for **RG208082**

DCUN1D3 (NM_173475) Human Tagged ORF Clone

Product data:

Product Type:	Expression Plasmids
Product Name:	DCUN1D3 (NM_173475) Human Tagged ORF Clone
Tag:	TurboGFP
Symbol:	DCUN1D3
Synonyms:	44M2.4; SCCRO3
Mammalian Cell Selection:	Neomycin
Vector:	pCMV6-AC-GFP (PS100010)
E. coli Selection:	Ampicillin (100 ug/mL)
ORF Nucleotide Sequence:	>RG208082 representing NM_173475 Red=Cloning site Blue=ORF Green=Tags(s)

TTTTGTAATACGACTCACTATAGGGCGGCCGGAATTCGTCGACTGGATCCGGTACCGAGGAGATCTGCC
GCC**CGATCGCC**

ATGGGCCAGTGTGTACCAAGTGTAAAGAATCCCTCATCGACCCTGGGCAGCAAAAATGGAGACCGTGAGC
CCAGCAACAAGTCACATAGCAGGCGGGTGCAGGCCACCGTGAGGAGCAGGTACCACCCTGTGGCAAGCC
AGGTGGAGATATCCTCGTCAACGGGACCAAGAAGGCCGAGGCTGCCACTGAGGCCTGCCAGCTGCCAACG
TCCTCGGGAGATGCTGGGAGGGAGTCCAAGTCCAATGCCGAGGAGTCTTCCTTGCAAAGATTGGAAGAAC
TGTTCAAGCGCTACAAGGATGAGCGGGAAGATGCAATTTGGAGGAAGGCATGGAGCGCTTTTGCAATGA
CCTGTGTGTTGACCCACAGAATTCGAGTGCTGCTCTTGCTTGGAAAGTTCCAGGCTGCAACCATGTGC
AAATTCACCAGGAAGGAGTTTTTGTATGGCTGCAAGCAATAAGTGCAGACAGCATTGACGGAATCTGTG
CACGGTCCCTAGCCTCTTAACAGAAGCCAAACAAGAGGATAAATTCAAGGATCTCTACCGGTTTACATT
TCAGTTTGGCCTGGACTCTGAAGAAGGGCAGCGGTCACTGCATCGGAAATAGCCATTGCCCTGTGGAAA
CTAGTCTTTACCCAGAACAATCTCCGGTATTGGACCAATGGCTAAACTTCTAACAGAGAACCCCTCGG
GGATCAAGGGCATCTCCCGGACACTTGGAAACATGTTCCCTTAACCTCACTCAGGTGATTGGCCCTGACCT
CAGCAACTACAGTGAAGATGAGGCCTGGCCAAGTCTCTTTGACACCTTTGTGGAGTGGGAAATGGAGCGA
AGGAAAAGAGAAGGGGAAGGGAGAGGTGCACTCAGCTCAGGGCCTGAGGGCTTGTGTCCCGAGGAGCAGA
CT

ACGCGTACGCGGCCGCTCGAG - GFP Tag - GTTTAA



[View online »](#)

Protein Sequence: >RG208082 representing NM_173475
Red=Cloning site Green=Tags(s)

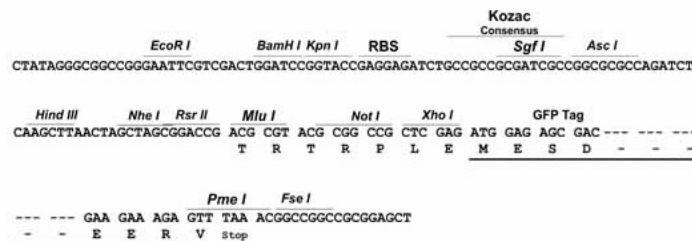
MGQCVTKCKNPSSTLGSKNGDREPSNKSHSRRGAGHREEQVPPCGKPGGDILVNGTKKAEATEACQLPT
 SSGDAGRESKSNAEESLQRLLEELFRYKDEREDAIIEEMERFCNDLCVDPTEFRVLLLAWKQAATMC
 KFTRKEFFDGCKAISADSIDGICARFPSLLTEAKQEDKFKDLYRFTFQFGLDSEEGQRSLHREIAIALWK
 LVFTQNNPPVLDQWLNFLTENPSGIKGISRDTWNMFLNFQVIGPDLSNYSEDEAWPSLFDTFVEWEMER
 RKREGEGRGALSSGPEGLCPPEEQT

TRTRPLE - GFP Tag - V

Restriction Sites: SgfI-MluI

Cloning Scheme:

Cloning sites used for ORF Shuttling:



ACCN: NM_173475

ORF Size: 912 bp

OTI Disclaimer: The molecular sequence of this clone aligns with the gene accession number as a point of reference only. However, individual transcript sequences of the same gene can differ through naturally occurring variations (e.g. polymorphisms), each with its own valid existence. This clone is substantially in agreement with the reference, but a complete review of all prevailing variants is recommended prior to use. [More info](#)

OTI Annotation: This clone was engineered to express the complete ORF with an expression tag. Expression varies depending on the nature of the gene.

Components: The ORF clone is ion-exchange column purified and shipped in a 2D barcoded Matrix tube containing 10ug of transfection-ready, dried plasmid DNA (reconstitute with 100 ul of water).

Reconstitution Method:

1. Centrifuge at 5,000xg for 5min.
2. Carefully open the tube and add 100ul of sterile water to dissolve the DNA.
3. Close the tube and incubate for 10 minutes at room temperature.
4. Briefly vortex the tube and then do a quick spin (less than 5000xg) to concentrate the liquid at the bottom.
5. Store the suspended plasmid at -20°C. The DNA is stable for at least one year from date of shipping when stored at -20°C.

Note: Plasmids are not sterile. For experiments where strict sterility is required, filtration with 0.22um filter is required.

RefSeq: [NM_173475.1](#), [NP_775746.1](#)

RefSeq Size: 3005 bp

RefSeq ORF: 915 bp

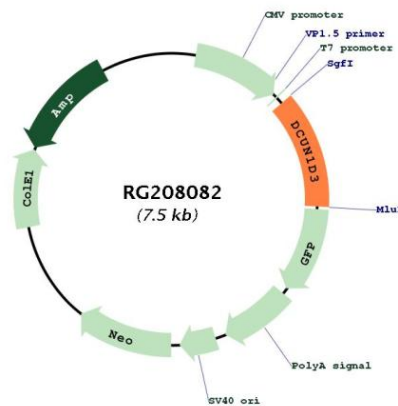
Locus ID: 123879

UniProt ID: [Q8IWE4](#)

Cytogenetics: 16p12.3

Gene Summary: Antagonizes DCUN1D1-mediated CUL1 neddylation by sequestering CUL1 at the cell membrane (PubMed:25349211). When overexpressed in transformed cells, may promote mesenchymal to epithelial-like changes and inhibit colony formation in soft agar (PubMed:25349211).[UniProtKB/Swiss-Prot Function]

Product images:



Circular map for RG208082