

Product datasheet for **RG208080**

ZNF70 (NM_021916) Human Tagged ORF Clone

Product data:

Product Type:	Expression Plasmids
Product Name:	ZNF70 (NM_021916) Human Tagged ORF Clone
Tag:	TurboGFP
Symbol:	ZNF70
Synonyms:	Cos17
Mammalian Cell Selection:	Neomycin
Vector:	pCMV6-AC-GFP (PS100010)
E. coli Selection:	Ampicillin (100 ug/mL)



[View online »](#)

ORF Nucleotide Sequence:

>RG208080 ORF sequence, **codon optimized**.
 Due to the complexity of NM_021916, the ORF clone is codon optimized for mammalian Expression.
 The nucleotide sequence differs from the reference sequence, yet the amino acid sequence remains identical.

Red=Cloning site Blue=ORF Green=Tags(s)

TTTTGTAATACGACTCACTATAGGGCGGCCGGAATTCGTGCGACTGGATCCGGTACCGAGGAGATCTGCC
 GCC**CGATCGCC**

ATGGAGGTACCACCCGCGACCAAGTTCGGCGAGACATTTGCTTTCGAGAATCGACTGGAGAGCCAGCAGG
 GCCTCTTCTGGTGAAGACTTGGGGATCCCTTCTTGAAGAGAGAGGCCTGGAACAGATGGCCGTCAT
 TTATAAGGAGATACCCCTGGGGAGCAAGATGAAGAGAATGATGACTACGAGGAAATTTTCCCTCTGC
 TCCAGCCCGTCCAGCATCAGAGTATCCCACCTGGCACCCGCCCTCAGGACGATGAGCTGTTTGGCCAAA
 CATTTCTGCAAAAGTCCGACTTGTCTATGTGCCAGATTATTCATTAGAGGAGCCCTCCCCCTGTGATTG
 CGCCGAAACCGACAGAGGCGATTCTGGTCCAAACGCTCCTCATAGAACCCACAGCCGGCTAAACCATAT
 GCTTGTAGGGAGTGTGAAAAGCATTTCACAGAGTAGCCACCTCTTGCACACCTCGTGATACACACCG
 GAGAAAAGCCGTATGAGTGTGCGAGTGCAGGCAAGGCTTCTCCCAAAGTTCTCACCTGTGAGACACCA
 GATTATCCACACAGGCGAAAAACCTTACGAATGTCTGGGAGTGTGGGAAGGCCTCCGGCAATCCTCTGCA
 TTGACACAACACCAGAAAATCCACACCGCAAGCGACCTTACGAATGTAGAGAGTGTGAAAAGATTCT
 CTCGGAGCAGTTCTCTGCGCAAGCATGAAAGAATACACACCGGAGAGCGACCTACCAGTCAAAGAGTG
 TGGAAAAGTTCAATCAGAGTTCGGCCTGAGTCAGCACCGGAAAGATCCACACGCTGAAAAGCCTCAT
 GAATGCGACTTGTGCGGAAAAGCCTTTTGCCACCGCAGCCACTCATACGGCATCAGCGCATCCACACAG
 GAAAGAAGCCCTACAAGTGCAGCAATGTGCAAGGCATTCTCCAGAGCAGTAACCTGATTGAGCACAG
 GAAAACACACCGGAGAAAAACCTTATAAATGCCAGAAATGTGGCAAGGCTTCTCCAAAGCAGCTCC
 CTCATCGAACACCAGCGCATTATACAGGTGAGAAAACCTTACGAATGCTGCCAGTGCAGGCAAGGCCTCT
 GTCCTCTCAGCTCTGATACAGCACAGCGCATCCACACGGTAAGAAGCCGTACACCTGCGAGTGCAGG
 CAAAGCTTTCAGGCACAGGAGTGCATCATCGAACACTACAAAACACACACCAGAAAAACCTATGTA
 TGTAACCTGTGTGCAAGTCCTTAGGGGCAGTTCACATTTGATTCGCCATCAGAAGATTACAGTGGTG
 AGAAGCTT

ACGCGTACGCGGCCGCTCGAG - GFP Tag - GTTTAA

Protein Sequence:

>RG208080 representing NM_021916
 Red=Cloning site Green=Tags(s)

MEVPPATKFGETF AFENRLESQQLFPGEDLGD PFLQERGLEQMAVIYKEIPLGEQDEENDYEGNFSLC
 SSPVQHQSI PPGTRPQDDELFGQTFLQKSDL SMCQIIHSEEPSPCDAETDRGDSGPNAPHRTPQPAKPY
 ACRECGKAFS QSSHLRHLVIHTGEKPYECECGKAFS QSSHLRHQIIHTGEKPYECECGKAFRQSSA
 LTQHQKIHTGKRPYECRECGKDFSRSSSLRKHERIHTGERPYQCKEKGKSFNQSSGLSQHRKIHTLKKPH
 ECDL CGKAFCHRSHLIRHQRIHTGKKPYKDECGKAFS QSSNLIHRKTHHTGEKPYKQKCGKAFS QSSS
 LIEHQRIHTGEKPYECCQCGKAFCHSSALIHQRIHTGKKPYTCECGKAFRHSALIEHYKTHTREKPYV
 CNL CGKSFSGSSHLIRHQKIHSGEKL

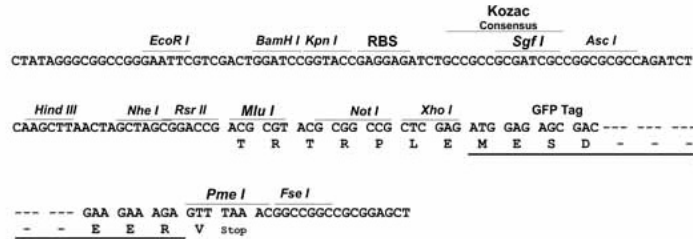
TRTRPLE - GFP Tag - V

Restriction Sites:

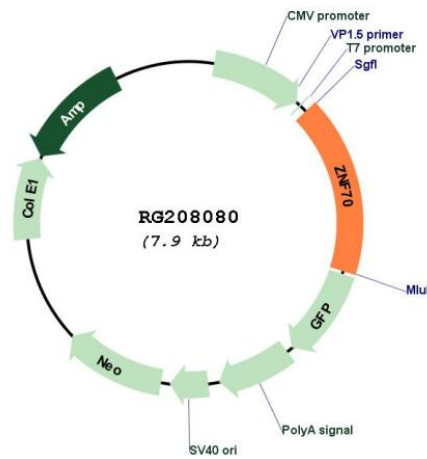
Sgfl-Mlul

Cloning Scheme:

Cloning sites used for ORF Shutting:



Plasmid Map:



ACCN:	NM_021916
ORF Size:	1338 bp
OTI Disclaimer:	The molecular sequence of this clone aligns with the gene accession number as a point of reference only. However, individual transcript sequences of the same gene can differ through naturally occurring variations (e.g. polymorphisms), each with its own valid existence. This clone is substantially in agreement with the reference, but a complete review of all prevailing variants is recommended prior to use. More info
OTI Annotation:	This clone was engineered to express the complete ORF with an expression tag. Expression varies depending on the nature of the gene.
Components:	The ORF clone is ion-exchange column purified and shipped in a 2D barcoded Matrix tube containing 10ug of transfection-ready, dried plasmid DNA (reconstitute with 100 ul of water).
Reconstitution Method:	<ol style="list-style-type: none">1. Centrifuge at 5,000xg for 5min.2. Carefully open the tube and add 100ul of sterile water to dissolve the DNA.3. Close the tube and incubate for 10 minutes at room temperature.4. Briefly vortex the tube and then do a quick spin (less than 5000xg) to concentrate the liquid at the bottom.5. Store the suspended plasmid at -20°C. The DNA is stable for at least one year from date of shipping when stored at -20°C.
RefSeq:	NM_021916.2 , NP_068735.1
RefSeq Size:	6940 bp
RefSeq ORF:	1341 bp
Locus ID:	7621
UniProt ID:	Q9UC06
Cytogenetics:	22q11.23
Protein Families:	Transcription Factors
Gene Summary:	May be involved in transcriptional regulation.[UniProtKB/Swiss-Prot Function]