

## Product datasheet for **RG208064**

### PPAP2A (PLPP1) (NM\_003711) Human Tagged ORF Clone

#### Product data:

Product Type:	Expression Plasmids
Product Name:	PPAP2A (PLPP1) (NM_003711) Human Tagged ORF Clone
Tag:	TurboGFP
Symbol:	PPAP2A
Synonyms:	LLP1a; LPP1; PAP-2a; PAP2; PPAP2A
Mammalian Cell Selection:	Neomycin
Vector:	pCMV6-AC-GFP (PS100010)
E. coli Selection:	Ampicillin (100 ug/mL)
ORF Nucleotide Sequence:	>RG208064 representing NM_003711 Red=Cloning site Blue=ORF Green=Tags(s)

TTTTGTAATACGACTCACTATAGGGCGGCCGGAATTCGTCGACTGGATCCGGTACCGAGGAGATCTGCC  
GCC**CGATCGCC**

ATGTTTGACAAGACGCGGCTGCCGTACGTGGCCCTCGATGTGCTCTGCGTGTTGCTGGCTGGATTGCCTT  
TTGCAATCTTACTTCAAGGCATACCCCTTCCAACGAGGAGTATTCTGTAATGATGAGTCCATCAAGTA  
CCCTTACAAGAAGACACCATACCTTATGCGTTATTAGGTGGAATAATCATTCCATTAGTATTATCGTT  
ATTATTCTGGAGAAACCCTGTCTGTTACTGTAACTTTTGCCTCAAATTCCTTATCAGGAATAACT  
ACATAGCCACTATTTACAAGCCATTGGAACCTTTTTATTGGTGCAGCTGCTAGTCAGTCCCTGACTGA  
CATTGCCAAGTATTCAATAGGCAGACTGCGGCCTCACTTCTTGGATGTTTGTGATCCAGATTGGTCAAAA  
ATCAACTGCAGCGATGGTTACATTGAATACTACATATGTCGAGGGAATGCAGAAAGATTAAGGAAGGCA  
GGTTGCTCTTCTATTCAGGCCACTCTTCGTTTTCCATGTACTGCATGCTGTTTGTGGCACTTTATCTTCA  
AGCCAGGATGAAGGAGACTGGGCAAGACTCTTACGCCCCACACTGCAATTTGGTCTTGTGGCGTATCC  
ATTTATGTGGCCTTTCTCGAGTTTCTGATTATAAACCACTGGAGCGATGTGTTGACTGGACTCATT  
AGGGAGCTCTGGTTGCAATATTAGTTGCTGTATATGTATCGGATTTCTTCAAAGAAAGAACTTCTTTAA  
AGAAAGAAAAGAGGAGGACTCTCATAACTCTGCATGAAACCAACAACCTGGGAATCACTATCCGAGC  
AATCACCAGCCT

**ACGCGT**ACGCGGCCGCTCGAG - GFP Tag - GTTTAA



[View online »](#)

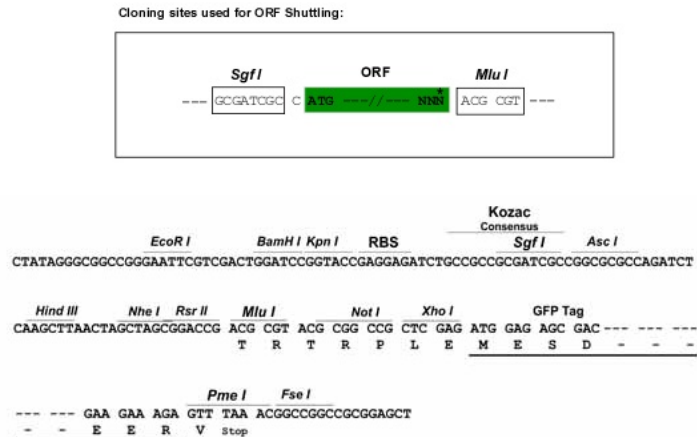
**Protein Sequence:** >RG208064 representing NM\_003711  
Red=Cloning site Green=Tags(s)

MFDKTRLPYVALDVLVLLAGLPFAILTSRHTPFQRGVFCNDESIKYPYKEDTIPYALLGGIIPFSIIV  
 IILGETLSVYCNLLHSNSFIRNNYIATIKYKIGTFLFGAAASQSLTDIAKYSIGRLRPHFLDVCDDPWSK  
 INCSGDGYIEYYICRGNAERVKEGRLSFYSGHSSFSMYCMLFVALYLQARMKGDWARLLRPTLQFGLVAVS  
 IYVGLSRVSDYKHHWSDVLTGLIQGALVAILVAVVVSDFFKERTSFKERKEEDSHTTLHETPTTGNHYP  
 NHQP

TRTRPLE - GFP Tag - V

**Restriction Sites:** SgfI-MluI

**Cloning Scheme:**



**ACCN:** NM\_003711

**ORF Size:** 852 bp

**OTI Disclaimer:** The molecular sequence of this clone aligns with the gene accession number as a point of reference only. However, individual transcript sequences of the same gene can differ through naturally occurring variations (e.g. polymorphisms), each with its own valid existence. This clone is substantially in agreement with the reference, but a complete review of all prevailing variants is recommended prior to use. [More info](#)

**OTI Annotation:** This clone was engineered to express the complete ORF with an expression tag. Expression varies depending on the nature of the gene.

**Components:** The ORF clone is ion-exchange column purified and shipped in a 2D barcoded Matrix tube containing 10ug of transfection-ready, dried plasmid DNA (reconstitute with 100 ul of water).

**Reconstitution Method:**

1. Centrifuge at 5,000xg for 5min.
2. Carefully open the tube and add 100ul of sterile water to dissolve the DNA.
3. Close the tube and incubate for 10 minutes at room temperature.
4. Briefly vortex the tube and then do a quick spin (less than 5000xg) to concentrate the liquid at the bottom.
5. Store the suspended plasmid at -20°C. The DNA is stable for at least one year from date of shipping when stored at -20°C.

**RefSeq:** [NM\\_003711.4](#)

**RefSeq Size:** 1638 bp

**RefSeq ORF:** 855 bp

**Locus ID:** 8611

**UniProt ID:** [O14494](#)

**Cytogenetics:** 5q11.2

**Domains:** acidPPc

**Protein Families:** Druggable Genome, Transmembrane

**Protein Pathways:** Ether lipid metabolism, Fc gamma R-mediated phagocytosis, Glycerolipid metabolism, Glycerophospholipid metabolism, Metabolic pathways, Sphingolipid metabolism

**Gene Summary:** The protein encoded by this gene is a member of the phosphatidic acid phosphatase (PAP) family. PAPs convert phosphatidic acid to diacylglycerol, and function in synthesis of glycerolipids and in phospholipase D-mediated signal transduction. This enzyme is an integral membrane glycoprotein that plays a role in the hydrolysis and uptake of lipids from extracellular space. Alternate splicing results in multiple transcript variants of this gene. [provided by RefSeq, May 2013]

### Product images:



Circular map for RG208064