

## Product datasheet for **RG208058**

### FECH (NM\_000140) Human Tagged ORF Clone

#### Product data:

Product Type:	Expression Plasmids
Product Name:	FECH (NM_000140) Human Tagged ORF Clone
Tag:	TurboGFP
Symbol:	FECH
Synonyms:	EPP; EPP1; FCE
Mammalian Cell Selection:	Neomycin
Vector:	pCMV6-AC-GFP (PS100010)
E. coli Selection:	Ampicillin (100 ug/mL)
ORF Nucleotide Sequence:	>RG208058 representing NM_000140 Red=Cloning site Blue=ORF Green=Tags(s)

TTTTGTAATACGACTCACTATAGGGCGGCCGGAATTCGTCGACTGGATCCGGTACCGAGGAGATCTGCC  
GCC**CGATCGCC**

ATGCGTTCCTACTCGGCGCAAACATGGCTGCGGCCCTGCGCGCCGCGGGCGTCTGCTCCGCGATCCGCTGG  
CATCCAGCAGCTGGAGGGTCTGTGAGCCATGGAGGTGGAAGTCAGGTGCAGCTGCAGCGGCCGTCAACC  
AGAAACAGCCCAGCATGCCAGGGTGCAAACCTCAAGTTCAACCGCAGAAGAGGAAGCCGAAAACCTGGA  
ATATTAATGCTAAACATGGGAGGCCCTGAAACTCTTGGAGATGTTACGACTTCTTCTGAGACTCTTCT  
TGGACCGAGACCTCATGACACTTCTATTCAGAATAAGCTGGCACCATTTCGCCAAACGCCGAACCCC  
CAAGATTCAGAGCAGTACCGCAGGATTGGAGGCGGATCCCCATCAAGATATGGACTTCCAAGCAGGGA  
GAGGGCATGGTGAAGCTGCTGGATGAATTGTCGCCAACACAGCCCTCACAAATACTATATTGGATTTT  
GGTACGTCATCCTTTAACAGAAGAAGCAATTGAAGAGATGGAGAGAGATGGCCTAGAAAGGGCTATTGC  
TTTCACACAGTATCCACAGTACAGCTGCTCCACCACAGGCAGCAGCTTAAATGCCATTTACAGATACTAT  
AATCAAGTGGGACGGAAGCCACGATGAAGTGGAGCACTATTGACAGGTGGCCACACATCACCTCCTCA  
TCCAGTGCTTTGCAGATCATATTCTAAAGGAACGGACCATTTTCCACTTGAGAAGAGAAGCGAGGTGGT  
CATTCTGTTTTCTGCTCACTCACTGCCATGTCTGTGGTCAACAGAGGCGACCCATATCCTCAGGAGGTA  
AGCGCCACTGTCCAAAAGTCAATGAAAAGGCTGGAGTACTGCAACCCCTACCGACTGGTGTGGCAATCCA  
AGGTTGGTCCAATGCCCTGGTTGGTCCCAAACAGACGAATCTATCAAAGGGCTTTGTGAGAGGGGGAG  
GAAGAATATCCTCTTGGTTCCGATAGCATTACCAGTGACCATATTGAAACGCTGTATGAGCTGGACATC  
GAGTACTCTCAAGTTTTAGCCAAGGAGTGTGGAGTTGAAAACATCAGAAGAGCTGAGTCTCTTAATGGAA  
ATCCATTGTTCTTAAGGCCCTGGCCGACTTGGTGCATTCACACATCCAGTCAAACGAGCTGTGTTCCAA  
GCAGCTGACCCTGAGCTGTCGCTGTGTCAATCCTGTCTGCAGGGAGACTAAATCCTTCTTACCAGC  
CAGCAGCTG

**ACGCGT**ACGCGGCCGCTCGAG - GFP Tag - GTTTAA



[View online »](#)

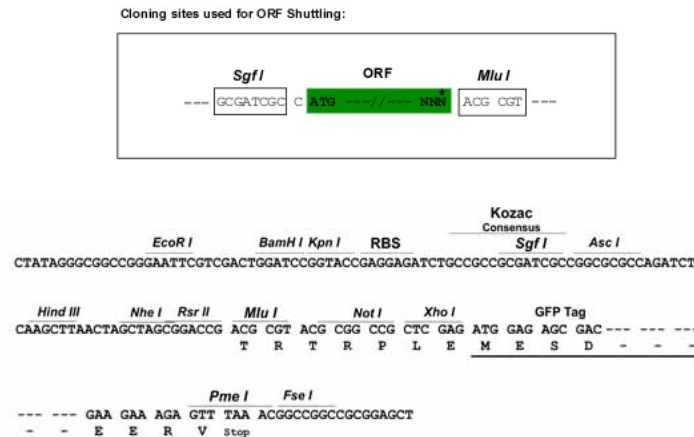
**Protein Sequence:** >RG208058 representing NM\_000140  
Red=Cloning site Green=Tags(s)

M R S L G A N M A A A L R A A G V L L R D P L A S S S W R V C Q P W R W K S G A A A A V T T E T A Q H A Q G A K P Q V Q P Q K R K P K T G  
 I L M L N M G G P E T L G D V H D F L L R L F L D R D L M T L P I Q N K L A P F I A K R R T P K I Q E Q Y R R I G G G S P I K I W T S K Q G  
 E G M V K L L D E L S P N T A P H K Y Y I G F R Y V H P L T E E A I E E M E R D G L E R A I A F T Q Y P Q Y S C T T G S S L N A I Y R Y Y  
 N Q V G R K P T M K W S T I D R W P T H H L L I Q C F A D H I L K E L D H F P L E K R S E V V I L F S A H S L P M S V N R G D P Y P Q E V  
 S A T V Q K V M E R L E Y C N P Y R L V W Q S K V G P M P W L G P Q T D E S I K G L C E R G R K N I L L V P I A F T S D H I E T L Y E L D I  
 E Y S Q V L A K E C G V E N I R R A E S L N G N P L F S K A L A D L V H S H I Q S N E L C S K Q L T L S C P L C V N P V C R E T K S F F T S  
 Q Q L

TRTRPLE - GFP Tag - V

**Restriction Sites:** SgfI-MluI

**Cloning Scheme:**



**ACCN:** NM\_000140

**ORF Size:** 1269 bp

**OTI Disclaimer:** The molecular sequence of this clone aligns with the gene accession number as a point of reference only. However, individual transcript sequences of the same gene can differ through naturally occurring variations (e.g. polymorphisms), each with its own valid existence. This clone is substantially in agreement with the reference, but a complete review of all prevailing variants is recommended prior to use. [More info](#)

**OTI Annotation:** This clone was engineered to express the complete ORF with an expression tag. Expression varies depending on the nature of the gene.

**Components:** The ORF clone is ion-exchange column purified and shipped in a 2D barcoded Matrix tube containing 10ug of transfection-ready, dried plasmid DNA (reconstitute with 100 ul of water).

**Reconstitution Method:**

1. Centrifuge at 5,000xg for 5min.
2. Carefully open the tube and add 100ul of sterile water to dissolve the DNA.
3. Close the tube and incubate for 10 minutes at room temperature.
4. Briefly vortex the tube and then do a quick spin (less than 5000xg) to concentrate the liquid at the bottom.
5. Store the suspended plasmid at -20°C. The DNA is stable for at least one year from date of shipping when stored at -20°C.

**RefSeq:** [NM\\_000140.5](#)

**RefSeq Size:** 3817 bp

**RefSeq ORF:** 1272 bp

**Locus ID:** 2235

**UniProt ID:** [P22830](#)

**Cytogenetics:** 18q21.31

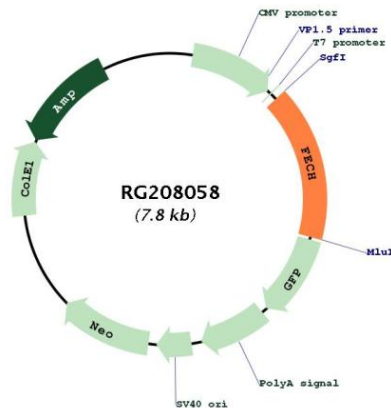
**Domains:** Ferrochelatase

**Protein Families:** Druggable Genome

**Protein Pathways:** Metabolic pathways, Porphyrin and chlorophyll metabolism

**Gene Summary:** The protein encoded by this gene is localized to the mitochondrion, where it catalyzes the insertion of the ferrous form of iron into protoporphyrin IX in the heme synthesis pathway. Mutations in this gene are associated with erythropoietic protoporphyria. Two transcript variants encoding different isoforms have been found for this gene. A pseudogene of this gene is found on chromosome 3.[provided by RefSeq, May 2010]

## Product images:



Circular map for RG208058