

Product datasheet for **RG208044**

IFT52 (NM_016004) Human Tagged ORF Clone

Product data:

Product Type:	Expression Plasmids
Product Name:	IFT52 (NM_016004) Human Tagged ORF Clone
Tag:	TurboGFP
Symbol:	IFT52
Synonyms:	C20orf9; CGI-53; NGD2; NGD5
Mammalian Cell Selection:	Neomycin
Vector:	pCMV6-AC-GFP (PS100010)
E. coli Selection:	Ampicillin (100 ug/mL)
ORF Nucleotide Sequence:	>RG208044 representing NM_016004 Red=Cloning site Blue=ORF Green=Tags(s)

TTTTGTAATACGACTCACTATAGGGCGGCCGGAATTCGTCGACTGGATCCGGTACCGAGGAGATCTGCC
GCC**CGATCGCC**

ATGGAGAAAGAGCTGCGGAGCACCATTCTTTCAATGCCTACAAAAAGGAGATTTACCACCAACAATG
GCTACAAATCCATGCAGAAAAAAGCTTCGGAGTAATTGGAAGATTCAGAGCTTAAAGATGAAATCACATC
TGAGAAGTAAATGGAGTAAACTGTGGATTACAGCTGGGCCAAGGGAAAAATTTACTGCAGCTGAGTTT
GAAATCCTGAAGAAATATCTTGACACTGGTGGAGATGTCTTTGTGATGCTAGGAGAAGGTGGAGAATCCA
GATTTGACACCAATATTAACCTTTTACTAGAAGAATATGGAATCATGGTTAATAATGATGCTGTGGTTAG
AAATGTATATCACAAATATTTCCATCCTAAAGAAGCTCTAGTTTCCAGTGGAGTCTTGAACAGGGAAAT
AGCCGAGCTGCAGAAAGGCTGTGCCTGGGATCATTGATGAGGAAAGCAGTGGAAACAATGCCAGGCTC
TCACCTTTGTGTATCCTTTTGGTCCACATTGAGTGTGATGAAACCAGCAGTGGCGGTTCTGTCTACAGG
TTCTGTCTGCTTCCCACTTAACAGACCCATTTGGCTTCTATCACTCAAAGAACCAAGTGGGAAGCTG
GCAGTGCCTGGTTCATGTCACATGTTTCAAGTATCAATATTTGGACAAAGAAGAAAACAGCAAAATCATGG
ATGTTGTTTTCCAGTGGCTCACGACAGGAGACATCCACCTAAACCAGATTGATGCTGAGGACCCAGAGAT
TTCTGACTACATGATGCTGCCCTACACAGCCACCCTATCAAAGCGGAATCGAGAGTGTCTCCAGGAGAGT
GATGAGATCCCAAGGGACTTTACCACCCTTTCGACCTGTCCATCTTCCAGCTGGATACCACCTCCTTCC
ACAGCGTCATCGAGGCTCACGAGCAGCTAAATGTGAAACATGAACCACTCCAGCTCATCCAGCCTCAGTT
TGAGACGCCGCTGCCAACCTTACGCTGCGGTTTTTCTCCAGTTTTCCGGGAGTTACCACCTCCTCCT
CTGGAGCTATTTGATTTAGATGAAACGTTCTCCTCTGAGAAGGCACGGCTGGCTCAGATTACCAATAAGT
GTACTGAAGAAGACCTGGAATTTTATGTCAGGAAGTGTGGTGATATTCTTGGAGTAACCAGTAAACTACC
AAAGGACCAACAGGATGCCAAACATATCCTTGAGCACGTCTTCTTCCAAGTGGTGGAGTTCAAGAAATTG
AACCAGGAACATGACATCGATACAAGTGAACAGCATTCCAGAACAATTTCC

ACGCGTACGCGGCCGCTCGAG - GFP Tag - GTTTAA



[View online >](#)

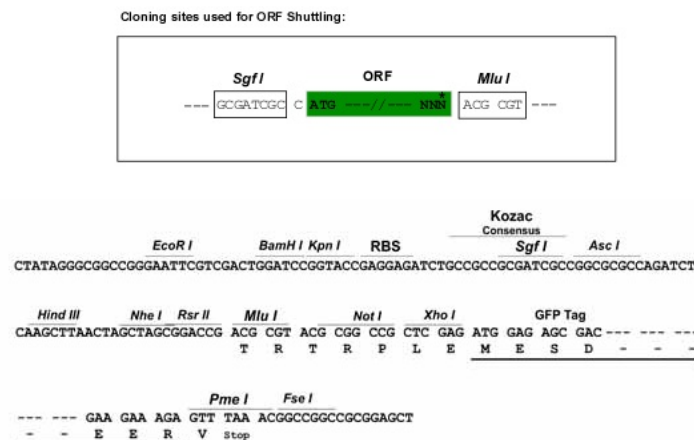
Protein Sequence: >RG208044 representing NM_016004
 Red=Cloning site Green=Tags(s)

```
MEKELRSTILFNAYKKEIFTTNNGYKSMQKKLRSNWKIQSLKDEITSEKLNQVGLWITAGPREKFTAEEF
EILKKYLDTGDDVFMVLGEGGESRFDNTINFLLEEYGMVNNDAVVRNVYHKYFHPKEALVSSGVLNREI
SRAAGKAVPGIIDEESSGNNQAALTFVYPPFGATLSVMKPAVAVLSTGVCVFLNRPILAFYHSKNQGGKL
AVLGSCHMFSDQYLDKEENSKIMDVVFQWLTTGDIHLNQIDAEDPEISDYMMPLPYATLSKRNRECLQES
DEIPRDFTTLFDLSIFQLDTSFHSVIEAHEQLNVKHEPLQLIQPFETPLPTLQPAVFPSPFRELPPPP
LELFDLDETFSSSEKARLAQITNKCTEEDLEFYVRKCGDILGVTSKLPKDQQDAKHILEHVFFQVVEFKKL
NQEHIDTSETAFQNNF
```

TRTRPLE – GFP Tag – V

Restriction Sites: SgfI-MluI

Cloning Scheme:



ACCN: NM_016004

ORF Size: 1311 bp

OTI Disclaimer: The molecular sequence of this clone aligns with the gene accession number as a point of reference only. However, individual transcript sequences of the same gene can differ through naturally occurring variations (e.g. polymorphisms), each with its own valid existence. This clone is substantially in agreement with the reference, but a complete review of all prevailing variants is recommended prior to use. [More info](#)

OTI Annotation: This clone was engineered to express the complete ORF with an expression tag. Expression varies depending on the nature of the gene.

Components: The ORF clone is ion-exchange column purified and shipped in a 2D barcoded Matrix tube containing 10ug of transfection-ready, dried plasmid DNA (reconstitute with 100 ul of water).

Reconstitution Method:

1. Centrifuge at 5,000xg for 5min.
2. Carefully open the tube and add 100ul of sterile water to dissolve the DNA.
3. Close the tube and incubate for 10 minutes at room temperature.
4. Briefly vortex the tube and then do a quick spin (less than 5000xg) to concentrate the liquid at the bottom.
5. Store the suspended plasmid at -20°C. The DNA is stable for at least one year from date of shipping when stored at -20°C.

Note: Plasmids are not sterile. For experiments where strict sterility is required, filtration with 0.22um filter is required.

RefSeq: [NM_016004.2](#), [NP_057088.2](#)

RefSeq Size: 1675 bp

RefSeq ORF: 1314 bp

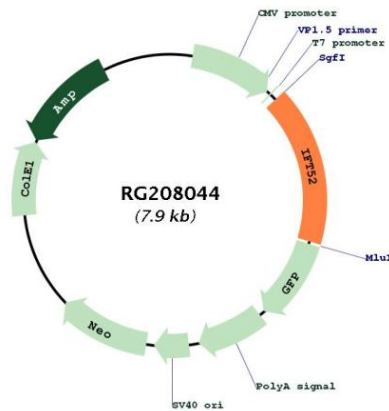
Locus ID: 51098

UniProt ID: [Q9Y366](#)

Cytogenetics: 20q13.12

Gene Summary: This gene encodes a conserved proline-rich protein that is a component of the intraflagellar transport-B (IFT-B) core complex. The encoded protein is essential for the integrity of the IFT-B core complex, and for biosynthesis and maintenance of cilia. Mutations in this gene are associated with ciliopathy that affects the skeleton. [provided by RefSeq, Oct 2016]

Product images:



Circular map for RG208044