

Product datasheet for **RG208024**

SLC49A4 (NM_032839) Human Tagged ORF Clone

Product data:

Product Type:	Expression Plasmids
Product Name:	SLC49A4 (NM_032839) Human Tagged ORF Clone
Tag:	TurboGFP
Symbol:	SLC49A4
Synonyms:	DIRC2; RCC4
Mammalian Cell Selection:	Neomycin
Vector:	pCMV6-AC-GFP (PS100010)
E. coli Selection:	Ampicillin (100 ug/mL)



[View online »](#)

ORF Nucleotide Sequence:

>RG208024 representing NM_032839
 Red=Cloning site Blue=ORF Green=Tags(s)

TTTTGTAATACGACTCACTATAGGGCGGCCGGGAATTCGTCGACTGGATCCGGTACCGAGGAGATCTGCC
 GCC**CGCATCGCC**

ATGGGCTCTCGCTGGAGCAGCGAAGAGGAGAGGACGCGCTGCTGGGGCCCGGGCTCGGGCTGGGCTGG
 GGGCTCCTGGAGAAGCCGGGAGGCGGGCGGGCGCTGCCCGCGCGGTCCCGGGTCCCGGGCGGGT
 ATACGGGCGCGCTGGCTGGTGTCTGCTCTTCTCGCTGCTGGCGTTCGTTTCAGGGCTGGTCTGGAAC
 ACCTGGGGTCCCATCCAGAACTCGGCGCGCCAGGCCTACGGCTTCTCCAGCTGGGACATCGCGCTGCTCG
 TGCTGTGGGGGCCATCGGCTTCTGCCCTGCTTCGCGTTCATGTGGCTCCTGGACAAGAGAGGTCTCCG
 GATAACTGTGCTCCTGACATCCTTCTTATGGTTTTGGAACTGGTCTAAGATGCATACCTATATCAGAC
 TTAATCCTTAAAAGAAGATTAATTCATGGAGGACAGATGTTAAATGGATTGGCAGGTCCAACCTGTAATGA
 ATGCAGCACCATTCTCTACGACGTGGTTTTCTGCAGATGAAAGGGCCACAGCCACAGCTATTGCATC
 AATGCTCAGTTATCTTGGGGAGCATGTGCATTTTTAGTTGGACCACTTGTGTTCCAGCTCCCAATGGG
 ACATCACCTCTTCTGCTGCAGAGAGCAGCAGGGCGCATATAAAGATCGCATAGAGGCTGTGTTATATG
 CAGAAATTTGGAGTTGTCTGCTTAATATTTCTGCAACACTAGCTTATTTCCACCCCGACCTCCTCTTCC
 TCCAGTGTGCTGCAGCTAGCCAGCGGCTGAGTTATCGGAGAAGCGTTTGTAGATTATTAAGCAATTTT
 CGATTTTTGATGATTGCTTAGCATATGCCATACCACTTGGTGTATTTGCTGGCTGGTCTGGAGTTCTGG
 ACTTAATTTAACACCAGCGCATGTGAGCAAGTAGATGCTGGCTGGATTGGATTTTGGTCCATAGTTGG
 AGGCTGTGTTGTTGGAATAGCTATGGCAAGGTTTGCAGATTTTATCAGGGGTATGCTGAACTAATCTT
 CTCCTCTGTTTTCGGGAGCTACACTGTATCCACGTGGTTCACCCTGACCTGTTGAACAGCATCACAC
 ACCTACTTTAACACAGTACATTGTATGCCTCCTGTATTCTCCTGGGAGTGTCTTGAATAGCAGCGT
 GCCTATATTTTTGAGCTTTTTGTGAAACTGTCTACCCAGTTCCAGAAGGAATTAATTGTGGAGTTGTC
 ACTTTTTTAAGTAATATGTTTATGGGAGTACTTTTTATTTTTCTCACATTTATCATACAGAGTTGTCTT
 GTTTCAACTGGTGCCTCCCGGGTCTGTTTGTCTCAGTCTCCTCCTATTCTGTGCTTCAGGGAATCCTA
 TGACAGACTCTATCTTGATGTGGTTGTCTCCGTT

AC**GGGCCGCTCGAG** – GFP Tag – GTTTAA

Protein Sequence:

>RG208024 representing NM_032839
 Red=Cloning site Green=Tags(s)

MGRSWSSEERQPLLGPGLGPGLGASWRSREAAAAALPAAVPGPGRVYGRRLVLLLFSLLAFVQGLVWN
 TWGPIQNSARQAYGFSSWDIALLVWGPIGFLPCFAFMWLLDKRGLRITVLLTSFLMVLGTGLRCIPI
 SDLILKRRILIHGGQMLNGLAGPTVMNAAPFLSTTWFSADERATATAIASMSYLLGGACAFLVGPLVVP
 APNGTSPLLAESSRAHIKDRIEAVLYAEFGVVCLIFSATLAYFPPRPPLPPSVAAASQRLSYRRSVC
 RLLSNFRFLMIALAYAIPLGVFAGWSGVLDLILTPAHVSQVDAGWIGFWSIVGGCVVGIAMARFADF
 IRGMLKLILLLLFSGATLSSTWFTLTCLNSITHLPLTTVTLYASCILLGVFLNSSVPIFFELFVET
 VYPVPEGITCGVVTFLSNFMGVLLFFLTFYHTELSWFNWCLPGSCLLSLLLILCFRESYDRLYL
 DVVVSV

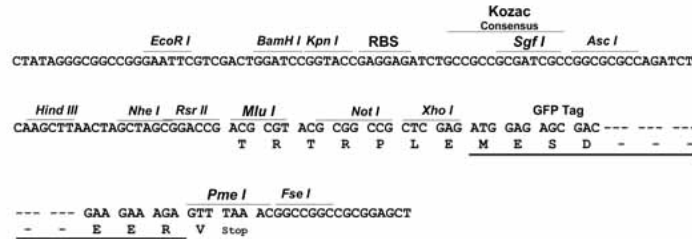
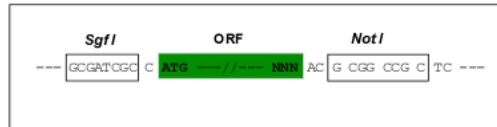
TR**PLE** – GFP Tag – V

Restriction Sites:

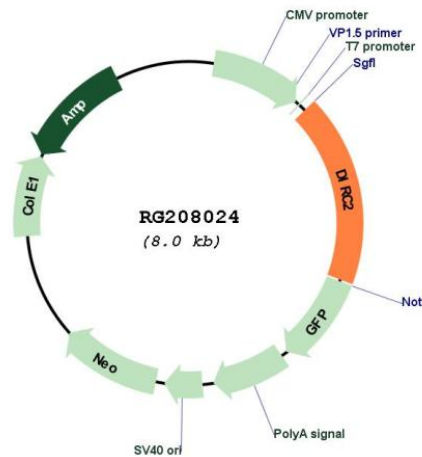
Sgfl-NotI

Cloning Scheme:

Cloning sites used for ORF Shuttling:



Plasmid Map:



ACCN: NM_032839

ORF Size: 1434 bp

OTI Disclaimer: The molecular sequence of this clone aligns with the gene accession number as a point of reference only. However, individual transcript sequences of the same gene can differ through naturally occurring variations (e.g. polymorphisms), each with its own valid existence. This clone is substantially in agreement with the reference, but a complete review of all prevailing variants is recommended prior to use. [More info](#)

OTI Annotation: This clone was engineered to express the complete ORF with an expression tag. Expression varies depending on the nature of the gene.

Components: The ORF clone is ion-exchange column purified and shipped in a 2D barcoded Matrix tube containing 10ug of transfection-ready, dried plasmid DNA (reconstitute with 100 ul of water).

Reconstitution Method:

1. Centrifuge at 5,000xg for 5min.
2. Carefully open the tube and add 100ul of sterile water to dissolve the DNA.
3. Close the tube and incubate for 10 minutes at room temperature.
4. Briefly vortex the tube and then do a quick spin (less than 5000xg) to concentrate the liquid at the bottom.
5. Store the suspended plasmid at -20°C. The DNA is stable for at least one year from date of shipping when stored at -20°C.

RefSeq: [NM_032839.3](#)

RefSeq Size: 2106 bp

RefSeq ORF: 1437 bp

Locus ID: 84925

UniProt ID: [Q96SL1](#)

Cytogenetics: 3q21.1

Protein Families: Transmembrane

Gene Summary: This gene encodes a membrane-bound protein from the major facilitator superfamily of transporters. Disruption of this gene by translocation has been associated with haplo-insufficiency and renal cell carcinomas. Alternatively spliced transcript variants have been described, but their biological validity has not yet been determined. [provided by RefSeq, Jul 2008]