

## Product datasheet for **RG208006**

### EMX1 (NM\_004097) Human Tagged ORF Clone

#### Product data:

Product Type: Expression Plasmids  
Product Name: EMX1 (NM\_004097) Human Tagged ORF Clone  
Tag: TurboGFP  
Symbol: EMX1  
Mammalian Cell Selection: Neomycin  
Vector: pCMV6-AC-GFP (PS100010)  
E. coli Selection: Ampicillin (100 ug/mL)  
ORF Nucleotide Sequence: >RG208006 representing NM\_004097  
Red=Cloning site Blue=ORF Green=Tags(s)

TTTTGTAATACGACTCACTATAGGGCGGCCGGAATTCGTCGACTGGATCCGGTACCGAGGAGATCTGCC  
GCC**CGATCGCC**

ATGTGCCTGGCTGGGTGCACACCCCGCAAGGCGGCGGCCAGGACGCGGAGCGCTCCCCAGAGCACGGC  
TGCCTCGCACAGCTCCCGCGGCTGCGACCATGTTCCAGCCCGCGCCAAGCGCGGCTTTACCATAGAGTC  
CTTGGTGGCCAAGGACGGCGGCACCGCGGGGGCACTGGCGGGGGGCGCGGGCTCCCATCTCCTGGCG  
GCGGCCGCTCCGAGGAACCGCTCCGGCCACGGCGCTCAACTACCCTCACCCAGCGCGGCCGAGGCGG  
CCTTCGTGAGTGGCTTCCCTGCGCGGCGCGCGGGCGCGGGCCGCTCGCTCTACGGTGGGCCCGAGCT  
CGTGTTCGCCGAGGCCATGAACCACCCCGCTGACCGTGCATCCGGCGCACAGCTGGGCGCCTCCCCG  
CTGCAGCCCCGCACTCCTTCTTCGCGGCCAGCACCGGACCCCTCTCCATTTCTACCCCTGGGTCTGC  
GGAACCGTTCTTCGGCCACCGTTCCAGGCCAGCGACGTGCCCCAGGACGGGCTGCTTCTGCACGGCCC  
CTTCGCACGCAAGCCCAAGCGGATCCGCACGGCCTTCTCGCCCTCGCAGCTGCTGCGGCTGGAGCGCGCC  
TTCGAGAAGAACCACTACGTGGTGGGCGCCGAGCGGAAGCAGCTGGCCGGCAGTCTCAGCCTCTCCGAGA  
CGCAGGTGAAGGTGTGGTTCAGAACCGGAGGACAAAGTACAAACGGCAGAAGCTGGAGGAGGAAGGGCC  
TGAGTCCGAGCAGAAGAAGAAGGCTCCCATCACATCAACCGGTGGCGCATTGCCACGAAGCAGGCCAAT  
GGGAGGACATCGATGTCACCTCAATGAC

AC**CGCT**ACGCGGCCGCTCGAG - GFP Tag - GTTTAA



[View online »](#)

**Protein Sequence:** >RG208006 representing NM\_004097  
 Red=Cloning site Green=Tags(s)

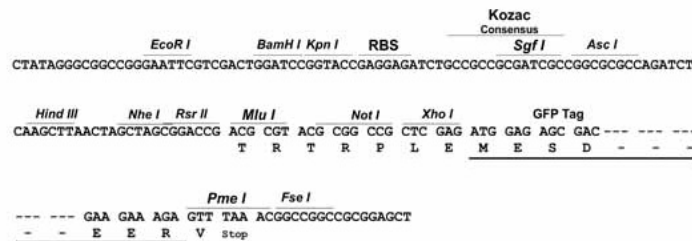
MCLAGCTPRKAAAPGRGALPRARLPRTAPAAATMFQPAAKRGFTIESLVAKDGGTGGGTGGGGAGSHLLA  
 AAASEEPLRPTALNYPHPSAEAAFVSGFPAAAAAGAGRSLYGGPELVFPEAMNHPALTVHPAHLGASP  
 LQPPHSFFGAQHRDPLHFYPWVLRNRFVGHFRFQASDVPQDGLLLHGPFARKPKRIRTAFAFSPSLLRLERA  
 FEKNHYVGAERKQLAGSLSLSETQVKVWFQNRRTKYKRQKLEEEGPESEQKKKGSHHINRWRIATKQAN  
 GEDIDVTSND

TRTRPLE - GFP Tag - V

**Restriction Sites:** SgfI-MluI

**Cloning Scheme:**

Cloning sites used for ORF Shutting:



**ACCN:** NM\_004097

**ORF Size:** 870 bp

**OTI Disclaimer:** The molecular sequence of this clone aligns with the gene accession number as a point of reference only. However, individual transcript sequences of the same gene can differ through naturally occurring variations (e.g. polymorphisms), each with its own valid existence. This clone is substantially in agreement with the reference, but a complete review of all prevailing variants is recommended prior to use. [More info](#)

**OTI Annotation:** This clone was engineered to express the complete ORF with an expression tag. Expression varies depending on the nature of the gene.

**Components:** The ORF clone is ion-exchange column purified and shipped in a 2D barcoded Matrix tube containing 10ug of transfection-ready, dried plasmid DNA (reconstitute with 100 ul of water).

**Reconstitution Method:**

1. Centrifuge at 5,000xg for 5min.
2. Carefully open the tube and add 100ul of sterile water to dissolve the DNA.
3. Close the tube and incubate for 10 minutes at room temperature.
4. Briefly vortex the tube and then do a quick spin (less than 5000xg) to concentrate the liquid at the bottom.
5. Store the suspended plasmid at -20°C. The DNA is stable for at least one year from date of shipping when stored at -20°C.

**RefSeq:** [NM\\_004097.2](#), [NP\\_004088.2](#)

**RefSeq Size:** 2188 bp

**RefSeq ORF:** 873 bp

**Locus ID:** 2016

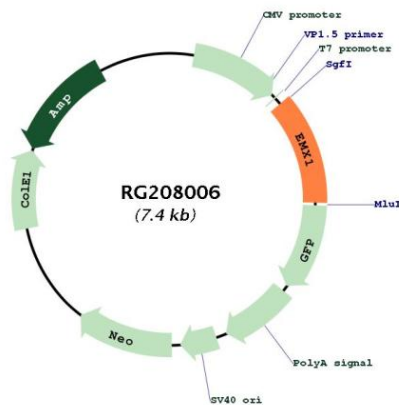
**UniProt ID:** [Q04741](#)

**Cytogenetics:** 2p13.2

**Protein Families:** Druggable Genome, ES Cell Differentiation/IPS

**Gene Summary:** Transcription factor, which in cooperation with EMX2, acts to generate the boundary between the roof and archipallium in the developing brain. May function in combinations with OTX1/2 to specify cell fates in the developing central nervous system.[UniProtKB/Swiss-Prot Function]

**Product images:**



Circular map for RG208006