

Product datasheet for **RG207986**

CIB2 (NM_006383) Human Tagged ORF Clone

Product data:

Product Type: Expression Plasmids
Product Name: CIB2 (NM_006383) Human Tagged ORF Clone
Tag: TurboGFP
Symbol: CIB2
Synonyms: DFNB48; KIP2; USH1J
Mammalian Cell Selection: Neomycin
Vector: pCMV6-AC-GFP (PS100010)
E. coli Selection: Ampicillin (100 ug/mL)
ORF Nucleotide Sequence: >RG207986 representing NM_006383
 Red=Cloning site Blue=ORF Green=Tags(s)

TTTTGTAATACGACTCACTATAGGGCGGCCGGAATTCGTCGACTGGATCCGGTACCGAGGAGATCTGCC
 GCC**CGATCGCC**

ATGGGGAACAAGCAGACCATCTTACCGAAGAGCAGCTAGACAACCTACCAGGACTGCACCTTCTTCAATA
 AGAAGGACATCCTCAAGCTGCATTTCGGATTCTATGAGCTGGCCCCAACCTCGTCCCAATGGACTACAG
 GAAGAGCCCCATCGTCCACGTGCCATGAGCCTCATCATCCAGATGCCAGAGCTCCGGGAGAATCCCTTC
 AAAGAAAGGATCGTGGCGCGTTTTCCGAGGATGGTGGGGAACTCACTTTCAACGACTTTGTGGACA
 TGTTTTCCGTGCTCTGCGAGTCGGTCCCCGAGAGCTCAAGGCAAATATGCCTTCAAGATCTATGACTT
 CAACACTGACAATTCATCTGCAAGGAGGACCTGGAGCTGACGCTGGCCCGGCTCACTAAGTCAGAGCTG
 GATGAGGAGGAGGTGGTCTTGTGTGCGACAAGGTCATTGAGGAGGCTGACTTGGATGGTACGGCAAGC
 TGGGCTTTGCTGACTTCGAGGACATGATTGCCAAGGCCCTGACTTCTCAGCACTTTCCACATCCGGAT
 C

ACGCGTACGCGGCCGCTCGAG - GFP Tag - GTTTAA

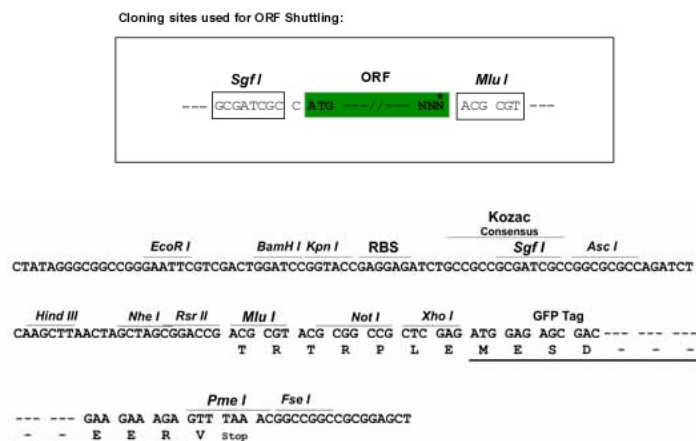
Protein Sequence: >RG207986 representing NM_006383
 Red=Cloning site Green=Tags(s)

MGNKQIFTEEQLDNYQDCTFFNKKDILKLHSRFYELAPNLVPM DYRKSPIVHVPM SLIIQMP ELRENPF
 KERIVAAFS EDGEGNLTFNDFVDMF SVLCE SAPRELKANYAFKIYDFNTDNFICKEDLELTLARLTKSEL
 DEEEVVLVCDKVIIEADLDGDGKLGADFEDMIAKAPDFLSTFHIRI

TRTRPLE - GFP Tag - V

Restriction Sites: Sgfl-MluI



Cloning Scheme:


ACCN: NM_006383

ORF Size: 561 bp

OTI Disclaimer: The molecular sequence of this clone aligns with the gene accession number as a point of reference only. However, individual transcript sequences of the same gene can differ through naturally occurring variations (e.g. polymorphisms), each with its own valid existence. This clone is substantially in agreement with the reference, but a complete review of all prevailing variants is recommended prior to use. [More info](#)

OTI Annotation: This clone was engineered to express the complete ORF with an expression tag. Expression varies depending on the nature of the gene.

Components: The ORF clone is ion-exchange column purified and shipped in a 2D barcoded Matrix tube containing 10ug of transfection-ready, dried plasmid DNA (reconstitute with 100 ul of water).

Reconstitution Method:

1. Centrifuge at 5,000xg for 5min.
2. Carefully open the tube and add 100ul of sterile water to dissolve the DNA.
3. Close the tube and incubate for 10 minutes at room temperature.
4. Briefly vortex the tube and then do a quick spin (less than 5000xg) to concentrate the liquid at the bottom.
5. Store the suspended plasmid at -20°C. The DNA is stable for at least one year from date of shipping when stored at -20°C.

RefSeq: [NM_006383.1](#)

RefSeq Size: 1580 bp

RefSeq ORF: 564 bp

Locus ID: 10518

UniProt ID: [O75838](#)

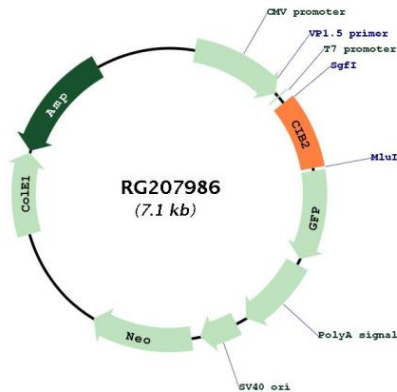
Cytogenetics: 15q25.1

Domains: EFh

Protein Families: Druggable Genome

Gene Summary: The protein encoded by this gene is similar to that of KIP/CIB, calcineurin B, and calmodulin. The encoded protein is a calcium-binding regulatory protein that interacts with DNA-dependent protein kinase catalytic subunits (DNA-PKcs), and it is involved in photoreceptor cell maintenance. Mutations in this gene cause deafness, autosomal recessive, 48 (DFNB48), and also Usher syndrome 1J (USH1J). Alternative splicing results in multiple transcript variants. [provided by RefSeq, Jul 2014]

Product images:



Circular map for RG207986