

## Product datasheet for **RG207985**

### **CREG2 (NM\_153836) Human Tagged ORF Clone**

#### Product data:

Product Type: Expression Plasmids  
 Product Name: CREG2 (NM\_153836) Human Tagged ORF Clone  
 Tag: TurboGFP  
 Symbol: CREG2  
 Mammalian Cell Selection: Neomycin  
 Vector: pCMV6-AC-GFP (PS100010)  
 E. coli Selection: Ampicillin (100 ug/mL)  
 ORF Nucleotide Sequence: >RG207985 representing NM\_153836  
 Red=Cloning site Blue=ORF Green=Tags(s)

TTTTGTAATACGACTCACTATAGGGCGGCCGGGAATTCGTCGACTGGATCCGGTACCGAGGAGATCTGCC  
 GCC**CGATCGCC**

ATGTCCGTGCGCCGCGGCCGGCGCCGGCGCGCCGGGGACCCGCCTCTCCTGGCTGCTGTGCTGCAGCG  
 CCCTGCTGTCCCCGGCCGCGGGCTACGTGATCGTGAGCTCCGTGTCTTGGGCCGTACCAACGAGGTGGA  
 CGAGGAGCTGGACAGCGCCTCCACTGAGGAGGCTATGCCCGCGCTGCTAGAGGATTCGGGCAGCATCTGG  
 CAGCAAAGCTTCCCCGCCTTGCCACAAGGAGGACGCGCACCTGCGGCCAGGGCGGGCGCCGCCCGGG  
 CCAGGCAGCCCCCGGCCACCCGGGATGTTCTCCTACCGCGCGAGGGCGCCAGACGGCCAGTGCGCC  
 CCGGGCCCTAGACTGCGCGCCGCCACCGCCCGCTCCCTGGCCCATGCCAGCGTCTGGGGCTGCCTGGCC  
 ACCGTGTCCACCCACAAGAAGATCCAAGGACTGCCATTTGGGAAGTGCCTGCCCGTCAGTGATGGCCCT  
 TCAACAATAGCACTGGGATTCCTTTCTTCTACATGACAGCCAAGGACCCCGTGGTGGCTGATCTGATGAA  
 GAACCCCATGGCCTCGCTGATGCTGCCAGAATCAGAAGGGGAGTTCTGCAGAAAAACATCGTTGATCCG  
 GAAGATCCCCGATGTGTCCAGTTAACGCTCACTGGCCAGATGATCGAGTGTCTCCAGAAGAAGTAGAAT  
 TTGCCAAGCAAGCCATGTTTTCAAGGCACCCAGGGATGAGGAAGTGGCCTCGTCAATATGAATGTTCTT  
 TATGAAGATGAGGATAGAACATATCTGGCTTCAGAAATGGTATGGAGGCGCATCCAGTATTTCAAGGGAG  
 GAATATTTCAAAGCAGTCCCAGAAAGGCC

**ACGCGT**ACGCGGCCGCTCGAG - GFP Tag - GTTTAA



[View online »](#)

**Protein Sequence:** >RG207985 representing NM\_153836  
Red=Cloning site Green=Tags(s)

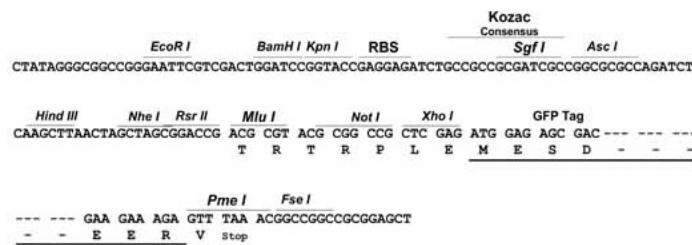
MSVRRGRRRPARPGTRL SWLLCCSALLSPAAGYIVSSVSWAVTNEVDEELDSASTEEMPALLEDSGSIW  
 QQSFPASAHKEDAHLRPRAGAARARQPPAPPGMFSYRREGGQTASAPPGPRLRAATARSLAHASVWGCLA  
 TVSTHKKIQGLPFGNCLPVSDGPFNNSTGIPFFYMTAKDPVVADLMKNPMASLMLPESEGEFCRKNIVDP  
 EDPRCVQLTLTGQMIAVSPREEVEFAKQAMFSRHPGMRKWPQRQYEWFFMKMRIEHIWLQKWYGGASSISRE  
 EYFKAVPRKA

TRTRPLE - GFP Tag - V

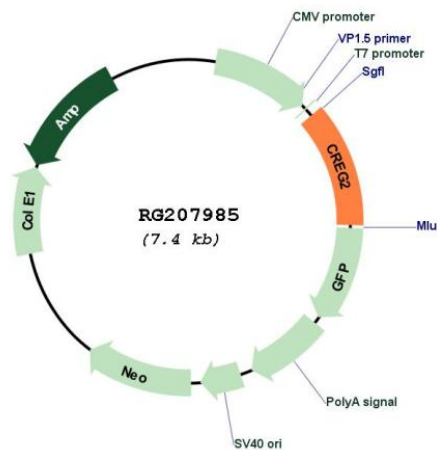
**Restriction Sites:** SgfI-MluI

**Cloning Scheme:**

Cloning sites used for ORF Shutting:



**Plasmid Map:**



**ACCN:** NM\_153836

**ORF Size:** 870 bp

<b>OTI Disclaimer:</b>	The molecular sequence of this clone aligns with the gene accession number as a point of reference only. However, individual transcript sequences of the same gene can differ through naturally occurring variations (e.g. polymorphisms), each with its own valid existence. This clone is substantially in agreement with the reference, but a complete review of all prevailing variants is recommended prior to use. <a href="#">More info</a>
<b>OTI Annotation:</b>	This clone was engineered to express the complete ORF with an expression tag. Expression varies depending on the nature of the gene.
<b>Components:</b>	The ORF clone is ion-exchange column purified and shipped in a 2D barcoded Matrix tube containing 10ug of transfection-ready, dried plasmid DNA (reconstitute with 100 ul of water).
<b>Reconstitution Method:</b>	<ol style="list-style-type: none"><li>1. Centrifuge at 5,000xg for 5min.</li><li>2. Carefully open the tube and add 100ul of sterile water to dissolve the DNA.</li><li>3. Close the tube and incubate for 10 minutes at room temperature.</li><li>4. Briefly vortex the tube and then do a quick spin (less than 5000xg) to concentrate the liquid at the bottom.</li><li>5. Store the suspended plasmid at -20°C. The DNA is stable for at least one year from date of shipping when stored at -20°C.</li></ol>
<b>RefSeq:</b>	<a href="#">NM_153836.1</a> , <a href="#">NP_722578.1</a>
<b>RefSeq Size:</b>	3201 bp
<b>RefSeq ORF:</b>	873 bp
<b>Locus ID:</b>	200407
<b>UniProt ID:</b>	<a href="#">Q8IUH2</a>
<b>Cytogenetics:</b>	2q11.2
<b>Protein Families:</b>	Secreted Protein