

Product datasheet for **RG207980**

TBC1D1 (NM_015173) Human Tagged ORF Clone

Product data:

Product Type:	Expression Plasmids
Product Name:	TBC1D1 (NM_015173) Human Tagged ORF Clone
Tag:	TurboGFP
Symbol:	TBC1D1
Synonyms:	TBC; TBC1
Mammalian Cell Selection:	Neomycin
Vector:	pCMV6-AC-GFP (PS100010)
E. coli Selection:	Ampicillin (100 ug/mL)
ORF Nucleotide Sequence:	>RG207980 representing NM_015173 Red=Cloning site Blue=ORF Green=Tags(s)

TTTTGTAATACGACTCACTATAGGGCGGCCGGAATTCGTCGACTGGATCCGGTACCGAGGAGATCTGCC
GCC**CGATCGCC**

ATGGAACCAATAACATTCACAGCAAGGAAACATCTGCTTTCTAACGAGGTCTCGGTGGATTTGGCCTGC
AGCTGGTGGGCTCCCTGCCTGTGCATTCCCTGACCACCATGCCCATGCTGCCCTGGGTTGTGGCTGAGGT
GCGAAGACTCAGCAGGCAGTCCACCAGAAAGAACCTGTAACCAAGCAAGTCCGGCTTTGCGTTTACCC
TCTGGACTGAGATGTGAACCTGAGCCAGGAGAAGTCAACAGTGGGATCCCTGATCTATTCCAGCATCT
TTGAGTGAAGCCTCAGCGTGTTCACAACTGATTCACAACAGTCATGACCCAAGTTACTTTGCTTGTCT
GATTAAGGAAGACGCTGTCCACCGCAGAGTATCTGCTATGTGTTCAAAGCCGATGATCAAACAAAAGTG
CCTGAGATCATCAGCTCCATCCGTGAGGCGGGGAGATCGCCCGCAGGAGGAGCTGCACTGCCCGTCCG
AGTTTCAGCAGACGTTTTCCAAGAAGTTCGAGGTGCTCTTCTGCGGCCGCGTGACGGTGGCGCACAAAGAA
GGCTCCGCGGCCCTGATCGACGAGTGCATCGAGAAGTTCAATCACGTACAGCGGCAGCCGGGGTCCGAG
AGCCCCGCCCAACCCGCCCATGCCCGCCACAGGGAGCCAGGAGCCTGTGCCAGGCCCATGCGCA
AGTCTTCTCCAGCCCGCCTGCGCTCGCTGGCTTTAGGAAGGAGCTGCAGGATGGGGCCTCCGAAG
CAGCGGCTTCTCAGCTCCTTCGAGGAGAGCGACATTGAGAACCCTCATTAGCGGACACAATATTGTG
CAGCCCACAGATATCGAGGAAAATCGAACTATGCTCTTCAGATTGGCCAGTCTGAAGTTTACCTCATCA
GTCTGACACCAAAAAATAGCATTGGAGAAAAATTTAAAGGAGATATCCTTTTGCTCTCAGGGCATCAG
ACACGTGGACCACTTTGGTTTTATCTGTGCGGAGTCTTCCGAGGTGGCGGCTTTCAATTTGTCTGTTAC
GTGTTTCAAGTGCACAAATGAGGCTCTGGTTGATGAAATTATGATGACCCTGAAACAGGCCTTACGGTGG
CCGCAAGTGCAGCAGACAGCTAAGGCGCCAGCCAGCTGTGTGAGGGCTGCCCTGCAAAGCCTGCACAA
GCTCTGTGAGAGGATAGAGGGAATGAATCTTCCAAAACAAAACCTAGAACTGCAAAGCACCTGACGACA
TTAACAAATCAGGAGCAGGCGACTATTTTTGAAGAGGTTCAGAAATTGAGACCGAGAAATGAGCAGCGAG
AGAATGAATTGATTATTTCTTTTCTGAGATGTTTATATGAAGAGAAACAGAAAGAACACATCCATATTGG
GGAGATGAAGCAGACATCGCAGATGGCAGCAGAGAATATTGGAAGTGAATTACCACCCAGTGCCACTCGA



TTTAGGCTAGATATGCTGAAAAACAAAGCAAAGAGATCTTTAACAGAGTCTTTAGAAAGTATTTTGTCCC
GGGTAATAAAGCCAGAGGCCTGCAGGAACACTCCATCAGTGTGGATCTGGATAGCTCCCTGTCTAGTAC
ATTAAGTAACACCAGCAAAGAGCCATCTGTGTGTGAAAAGGAGGCCTTGCCCATCTCGAGAGCTCCTTT
AAGCTCCTCGGCTCCTCGGAGGACCTGTCCAGTGAAGTCCGAGAGTCACTCCCAGAAGAGCCAGCTCCGC
TGTCGCCCCAGCAGGCCTTCAGGAGGCGAGCAAACACCCCTGAGTCACTTCCCCATCGAATGCCAGGAACC
TCCACAACCTGCCCGGGGTCCCCGGGGTTCGCAAAGGAACTTATGAGGTATCACTCAGTGAACACA
GAGACGCTCATGAACGAAAGGACTTTGAATCCAAAGCAAACCATCTTGGTGATTCTGGTGGGACTCCTG
TGAAGACCCGGAGGCATTCTGGAGGCAGCAGATATTCTCCGAGTAGCCACCCCGAGAAGGCGTGCGA
TTCTTCCAGCAGATATGAAGATTATTCAGAGCTGGGAGAGCTTCCCCACGATCTCCTTTAGAACCAGTT
TGTGAAGATGGGCCCTTTGGCCCCCACCAGAGGAAAAGAAAAGGACATCTCGTGAAGCTCCGAGAGCTGT
GGCAAAAGGCTATTCTTAAACAGATACTGCTGCTTAGAATGGAGAAGGAAAATCAGAAGCTCCAAGCCTC
TGAAAATGATTTGCTGAACAAGCGCCTGAAGCTCGATTATGAAGAAATTAAGTTTGACATGGAAAAATGC
ACTACAGTGTGGAAAAGATGCTTAGCACTCCAGGAAGATCAAAAATTAAGTTTGACATGGAAAAATGC
ACTCGGCTGTTGGCAAGGTGTCCACGTCATCACCGAGGTGAAATCTGGAATTTCTAGCTGAGCAATT
CCACCTTAAACACCAGTTTCCCAGCAAACAGCAGCCAAAGGATGTCCATACAAAGAAGCTTTAAAGCAG
CTGACTTCCCAGCAGCATGCGATTCTTATTGACCTTGGGCGAACCTTCTACACACCCATACTTCTCTG
CCCAGCTTGGAGCAGGACAGCTATCGCTTTACAACATTTTGAAGGCCTACTCACTTCTAGACCAGGAAGT
GGGATATTGCCAAGGTCTCAGCTTTGTAGCAGGCATTTTGTCTTTCATATGAGTGAAGGAGGCGGTTT
AAAATGCTCAAGTTTCTGATGTTTGACATGGGGCTGCGGAAACAGTATCGGCCAGACATGATTATTTTAC
AGATCCAGATGTACCAGCTCTCGAGGTTGCTTCATGATTACCACAGAGACCTCTACAATCACCTGGAGGA
GCACGAGATCGGCCCCAGCCTCTACGCTGCCCCCTGGTTCCTCACCATGTTTGCCTCACAGTTCCCGCTG
GGATTCTAGCCAGAGTCTTTGATATGATTTTCTTTCAGGGAACAGAGGTCATATTTAAAGTGGCTTTAA
GTCTGTTGGGAAGCCATAAGCCCTTGATTCTGCAGCATGAAAACCTAGAAACCATAGTTGACTTTATAAA
AAGCACGCTACCCAACCTTGGCTTGGTACAGATGGAAAAGACCATCAATCAGGTATTTGAAATGGACATC
GCTAAACAGTTACAAGCTTATGAAGTTGAGTACCACGTCCTTCAAGAAGAACTTATCGATTCTCTCCTC
TCAGTGACAACCAAGAATGGATAAATAGAGAAAACCAACAGCAGCTTACGCAAACAGAACCTTGACCT
CCTTGAACAGTTGCAGGTGGCAATGGTAGGATCCAAAGCCTTGAGGCCACCATTGAGAAGCTCCTGAGC
AGTGAGAGCAAGCTGAAGCAGGCCATGCTTACCTTAGAACTGGAGCGGTGCGCCCTGCTGCAGACGGTGG
AGGAGCTGCGGCGGAGCGCAGAGCCAGCGACCGGGAGCCTGAGTGCACGCAGCCCGAGCCACGGG
CGAC

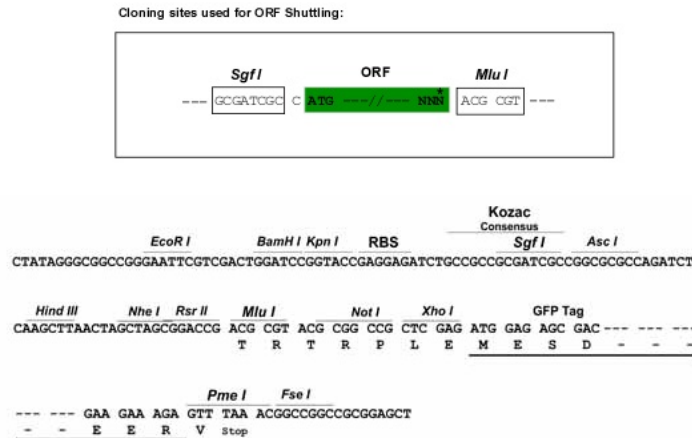
ACGCGTACGCGGCCGCTCGAG - GFP Tag - GTTTAA

Protein Sequence: >RG207980 representing NM_015173
 Red=Cloning site Green=Tags(s)

```
MEPITFTARKHLLSNEVSVDFGLQLVGS LPVHSLTTPMPLPWVVAEVRRLSRQSTRKEPVTQVRLCVSP
SGLRCEPEPGRSQQWDPLIYSSIFECKPQRVHKL IHNSHDPSYFACL IKEDAVHRQSI CYVFKADDQTKV
PEI ISSIRQAGKIARQEELHCPSEFDDTF SKKFEVLF CGRVTVAHKKAPPAL IDECIEKFNHVS GSRGSE
SPRPNPPHAAPTGSQEPVRRPMRKSF SQPGLRSLAFR KELQDGG LRSSGFF SFF EESDIENHL ISGHNIV
QPTDIEENRTMLFTIGQSEVYLISPDTKKIALEKNFKEISFCSQGIRHVDHFGFICRESSGGGGFHVCY
VFQCTNEALVDEIMMTLKQAF TVAAVQQTAKAPAQLCEGCPLQSLHKL CERIEGMNS SKTKLELQKHLTT
LTNQEQATIFEEVQKL RPRNEQRENELIISFLRCLYEEKQKEHIHIGEMKQTSQMAAENIGSELPPSATR
FRLDMLKNKAKRSLTESLESILSRGNKARGLQEHSISVDLDSSL SSSLNTSKEPSVCEKEALPISESSF
KLLGSSEDLSSDES HLP EEPAPLSPQQAFRRRANTLSHFPIECQEPQPARGSPGVSQRKLMRYHSVST
ETPHERKDFESKANHLGDSGGTPVKTRRHSWRQQIFLRVATPQKACDSSSR YEDYSELGELPPRSPL EPV
CEDGPF GPPPEEKRTSRELRELWQKAILKQILLRMEKENQKLQASENDLLNKRLKLDYEEITPCLKEV
TTVWEKMLSTPGRSKIKFDMEKMHS AVGQGVPRHHRGEIWKFLAEQFHLKHQFP SKQQPKDVPYKELLKQ
LTSQQHAILIDLGRTPFTHPYFSAQLGAGQLSLYNILKAYSLLDQEVGYCQGLSFVAGILL LHMSEEEAF
KMLKFLMDFMGLRKQYRPMIILQIQMYQLSRLLDHYHRDLYNHLEEH EIGPSLYAAPWFLTMFASQFPL
GFVARVFDMI FLQGTEVIFKVALSLLGSHKPLILQHENLETIVDFIKSTLPNLGLVQMEKTINQVFEMDI
AKQLQAYEVEYHVLQEELIDSSPLSDNQ RMDKLEKTNSSLRKQNLDLLEQLQVANGRIQSLEATIEKLLS
SESKLKQAMLTLELERSALLQTVEELRRRSAEPSDREPECTQPEPTGD
```

TRTRPLE - GFP Tag - V

Restriction Sites: SgfI-MluI
Cloning Scheme:



ACCN: NM_015173
ORF Size: 3504 bp

OTI Disclaimer: Due to the inherent nature of this plasmid, standard methods to replicate additional amounts of DNA in E. coli are highly likely to result in mutations and/or rearrangements. Therefore, OriGene does not guarantee the capability to replicate this plasmid DNA. Additional amounts of DNA can be purchased from OriGene with batch-specific, full-sequence verification at a reduced cost. Please contact our customer care team at custsupport@origene.com or by calling 301.340.3188 option 3 for pricing and delivery.

The molecular sequence of this clone aligns with the gene accession number as a point of reference only. However, individual transcript sequences of the same gene can differ through naturally occurring variations (e.g. polymorphisms), each with its own valid existence. This clone is substantially in agreement with the reference, but a complete review of all prevailing variants is recommended prior to use. [More info](#)

OTI Annotation: This clone was engineered to express the complete ORF with an expression tag. Expression varies depending on the nature of the gene.

Components: The ORF clone is ion-exchange column purified and shipped in a 2D barcoded Matrix tube containing 10ug of transfection-ready, dried plasmid DNA (reconstitute with 100 ul of water).

Reconstitution Method:

1. Centrifuge at 5,000xg for 5min.
2. Carefully open the tube and add 100ul of sterile water to dissolve the DNA.
3. Close the tube and incubate for 10 minutes at room temperature.
4. Briefly vortex the tube and then do a quick spin (less than 5000xg) to concentrate the liquid at the bottom.
5. Store the suspended plasmid at -20°C. The DNA is stable for at least one year from date of shipping when stored at -20°C.

RefSeq: [NM_015173.2](#), [NP_055988.2](#)

RefSeq Size: 5688 bp

RefSeq ORF: 3507 bp

Locus ID: 23216

UniProt ID: [Q86TI0](#)

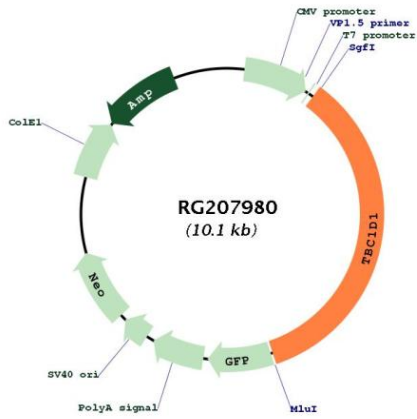
Cytogenetics: 4p14

Domains: TBC

Protein Families: Druggable Genome

Gene Summary: TBC1D1 is the founding member of a family of proteins sharing a 180- to 200-amino acid TBC domain presumed to have a role in regulating cell growth and differentiation. These proteins share significant homology with TRE2 (USP6; MIM 604334), yeast Bub2, and CDC16 (MIM 603461) (White et al., 2000 [PubMed 10965142]).[supplied by OMIM, Mar 2008]

Product images:



Circular map for RG207980