

Product datasheet for **RG207973**

RALGAPB (NM_020336) Human Tagged ORF Clone

Product data:

Product Type:	Expression Plasmids
Product Name:	RALGAPB (NM_020336) Human Tagged ORF Clone
Tag:	TurboGFP
Symbol:	RALGAPB
Synonyms:	KIAA1219; RalGAPbeta
Mammalian Cell Selection:	Neomycin
Vector:	pCMV6-AC-GFP (PS100010)
E. coli Selection:	Ampicillin (100 ug/mL)
ORF Nucleotide Sequence:	>RG207973 representing NM_020336 Red=Cloning site Blue=ORF Green=Tags(s)

TTTTGTAATACGACTCACTATAGGGCGCCGGGAATTCGTCGACTGGATCCGGTACCGAGGAGATCTGCC
GCC**CGATCGCC**

ATGTA
ACTCTGAGTGGAGGTC
ACTGCATTTGGTGATTCAGAA
TGATCAAGGCCATACCAGTGTGCTGCACA
GCTATCCAGAGAGCGTTGGACGAGAGGTGGCAAATGCTGTAGTCCGTCCTTTGGGCAGGTGTTAGGTAC
CCCTTCAGTGGCTGGTAGTGAGAAATTTGTTAAAACTGACAAAGAAGTAAATGGACCATGGAAGTAATT
TGCTATGGACTGACCCTCCATTGGATGGAGAGACTGTAAAATATTGCGTTGATGTATATACAGACTGGA
TTATGGCTTTAGTGTGGCAAAAGATTCTATTCCATTGCCAGTTATTAAGAGCCTAATCAATATGTTCA
AACTATACTAAAACACCTACAGAATCTTTTTGTACCAAGACAGGAACAGGGTTCAGTCAGATTCGACTA
TGCTTACAGGTCCTGAGAGCCATTCAGAAACTGGCCCGTGAGTCATCTCTCATGGCCCGAGAAACTTGGG
AAGTCTTACTGTTGTTTCTTCTGCAGATTAACGACATACTTCTGGCCCCACCAACTGTTCAAGGTGGCAT
TGCTGAGAATCTAGCAGAGAAGTTGATTGGTGTCTCTTTGAGGTGTGGTTACTAGCTTGTACTCGGTGC
TTCCCAACACCTCCTTATTGGAAAACAGCCAAGGAGATGGTGGCTAACTGGAGGCATCACCAGCAGTGG
TGGAGCAGTGGAGCAAGGTCATTTGTGCACTCACTTCCAGATTGCTACGCTTTACATATGGTCCTTCATT
TCCTGCATTTAAAGTCCCGATGAAGATGCCAGTCTGATCCCTCCAGAAATGGATAATGAGTGTGTTGCA
CAGACGTGGTTTTCGTTTTTACACATGTTAAGTAATCCTGTGGATTTGAGTAACCCAGCTATTATAAGT
CTACTCCAAATTCAGGAACAGTCTTGAATGTGAGCGGAATGCCGCAAGAATTGAATCAGTATCCCTG
CCTTAAACATCTGCCTCAAATATTTTTTTCGTGCCATGCGTGGAATCAGCTGTCTGGTGGATGCATTCCTA
GGTATTTCTAGACCCCGATCAGACAGTGTCCCCAACACCCGTGAATAGATTAAGTATGCCTCAAAGTG
CTGCTGTCAGTACCACCCCCACATAACCGGAGGCACCGGGCTGTTACTGTGAATAAGGCCACCATGAA
GACAAGCACAGTTAGTACTGCTCATGCCTCTAAAGTTCAGCACCAGACGTCTCCACCTCTCCTCTGTCA
AGTCCAAATCAGACTAGTTCAGAACCCCGCCACTGCCTGCCCTCGGAGACCAAGGTTAACAGCATCT
TGAATCTCTTTGGATCATGGTTATTTGATGCAGCATTGTTCAGTGTAACTTCATAATGGGATAAACAG
AGACAGCAGCATGACTGCCATTACAACAAGCTAGCATGGAGTTTCGACGGAAAGGGTCACAAATGTCC



[View online >](#)

ACAGACCCATGGTTTCCAATCCTATGTTTGATGCAAGTGAATTTCTGATAACTATGAAGCAGGAAGAG
 CTGAGGCTTGTGGGACACTGTGTAGGATTTTTGTAGCAAGAAGACTGGAGAAGAGATTCTGCCAGCTTA
 TTTATCCAGATTTTACATGCTTTAATTCAGGTTTGCAGATAAATGATTATGTGTGCCATCCTGTCTTG
 GCCAGCGTTATTTCAAATCTCCTCCTTTGTTCTGCTGTGACTTGAAAGGGATTGATGTTGTGGTTCCCT
 ACTTTATTTTACAGCTCTTGAAACCATTTTGCTGACAGAGAAGCTCTCAAAATTCAAAAGCTATGTAATCC
 AACAGAATTGCGAAGATCCTCCATTAATATCCTGCTTTCTTTGTTGCCCTCCCTCATCATTTTGGCACA
 GTCAAATCTGAGGTGGTCTGGAAGGAAAGTTTAGTAACGATGACAGCTCTTTATGATAAACCAATAA
 CTTTTCTGTCCCTGAAGTTGAGACTTGTGAATATATTAATAGGTGCCTTGCAAAGTCAAACGGACCCCAA
 CAACACCCAAATGATATTAGGGCAATGTTAAATATTGTTCAAGATTCAGCACTTTTGAAGCCATTGGT
 TGCCAGATGGAGATGGTGGTGGAGAAAATAACCTGAAGAGTCATAGTCGCACCAATAGTGGTATTAGTT
 CAGCAAGTGGTGAAGCACGGAGCCACGACTCCCGATAGTGAGAGACCTGCTCAAGCTCTCTTAAGAGA
 TTATGCTCTTAATACAGATTGAGCTGCTGGCTCCTGATTCGCAGCATTATCTCGTCACCCAAAGACTC
 AACTCCCAGTGGCGCAAGACATGAGCATATCACTGGCAGCTCTGGAGCTCCTCTCTGCCCTTGCAAAGG
 TAAAAGTGATGGTTGACTCAGGAGACCGGAAGCGAGCCATCAGTTCTGTGTGCACCTACATTGTTTATCA
 GTGTAGTCGGCCAGCTCCTTTACTCCAGGGATCTGCACTCCATGATAGTGGCAGCTTTTCAAGTGTCTC
 TGTGTCTGGCTGACAGAGCACCTGATATGCTTGTGATAAAGGACTGCCTTAAGGAAGTACTGGAGATTG
 TGAAGTGGGTATCTCAGGAAGTAAGTCCAAGAACAATGAGCAAGAGGTCAAGTCAAAGGAGATAAGGA
 GCCAAACCTGCATCTATGAGGGTAAAGGATGCTGCTGAAGCCACCCTAACATGCATTATGCAGTTGCTC
 GGCGCATTTTCTTACCTAGTGGTCTGCTCCTCTCTTGTAGTCTTGTGAATGAGACCACTTTGATTAAT
 ACTCCAGGCTGCCAACCAATAACAAGCATAGTTTCCGGTACTTTGTCTTGGATAACAGTGTATCCTGGC
 AATGCTGGAACAACCTCTTGGAAATGAGCAGAATGATTTTTCCCTCTGCTACTGTGCTGGTCCGGGGA
 ATGCTGGAAGACTTGTGGGCACAACAGCTTTGTCTTTACCCAGAGGAGCAAAGCAAATCAGAAGC
 TTTTGTACCTGAACCTCGCCAGTTCCTAAAAATGACGTTGGATTTAAATATTCTGTGAACATCGGCC
 ATTTCTGAAGAGGTGGACAAGATTCCTTTTGTGAAAGCAGATCTCAGCATTCCAGATTTGCATGAAATA
 GTCAGTGAAGAATTAGAAGAGAGACACGAAAAATTAAGGAGTGGCATGGCCAGCAGATTGCTTATGAAA
 TACACCTTGAGCAACAGAGTGAAGGAAATGCAGAAGAGAAGTTTTCTGACCCAGTTACGGATTGCAA
 GCCCCCGCTCCTGCCAGGAATTCAAACAGCCCGCCTTTTTCTCTCACACTTTGGATTTTTGTCTTA
 GAAGCACTGAAGGAACCTGCAAATAGTCGTCTACCTCCTCACCTATTGCACTTGATTCCACGATACCTG
 GATTTTTTGTAGACATTGGGTATCTGGATCTTGGCATGTCGCTCTTTGACACAGTTTTTATTTTCTA
 TATGAAGCCAGGTCAGAAAACGAACCAAGAGATTTTAAAGAATGTGGAGTCTCCAGAAGTTCAGCCA
 CATTTCCTAGAATTTTTGCTTTCCCTTGGCTGGTCAAGATGTGGGCAGACACCCTGGTTGGACTGGGC
 ATGTTTCTACCAGTTGGTCTATTAATTGTTGTGATGATGGTGAAGGATCTCAACAAGAAGTATTTCCTC
 TGAAGATATTGGAGCTAGCATTTTCAATGGACAGAAGAAGGTGCTGTATTATGCTGATGCCCTTACAGAA
 ATTGCTTTTGTGGTTCTTCTCCTGTGGAGTCTTAACCTGATTTCATTGGAAGTAACATCTCGGACCAAG
 ATAGTGATTCAAATATGGATCTTATGCCAGGAATCTGAAACAGCCATCCCTGCACTTGAGCTTTTCCC
 CAATCATAACAGACAATCTTAATTCCTCAGAGGCTCAGTCCCAGTTCAGAAATGAGGAAGCTGCCTCAG
 GGTCCGCTGTCTCCCTTGGACCTGAGACAAGAGTTTCTGTAGTCTGGGTGGAACGCTATGATGATA
 TAGAAAATTTCCCTCTCAGAGCTGATGACAGAGATCAGTACTGGTGTGAAACTACTGCAAATAGTAG
 CACTTCACTGAGATCTACAACCTTGAAGAAAGTTCCTGTCTTCCATCCACCTTTAAACCTGGA
 TTATCCGGATAAAAATTCAGGAGCCACTGGAAAATTTAATATGGTCATCCCTCTTGTGGATGGATGA
 TTGTGACAGCGGAGCTCTTGGCTTCTGGTGGAGCAGACTGTAATTAACATTTGTAGAAGAAAGAGACT
 GGAAAGTACTCTACAGTCCCCCATGTCCGCCGAAACAGAAAATCACCGACATTGTCAACAAGTAC
 CGGAACAAGCAGCTGGAGCCAGATTTTACTTCACTTTTCCAGGAGGTTGGACTCAAGAAGTGCAGTT
 CT

ACGCGTACGCGGCCGCTCGAG – GFP Tag – GTTTAA

Protein Sequence: >RG207973 representing NM_020336
 Red=Cloning site Green=Tags(s)

```

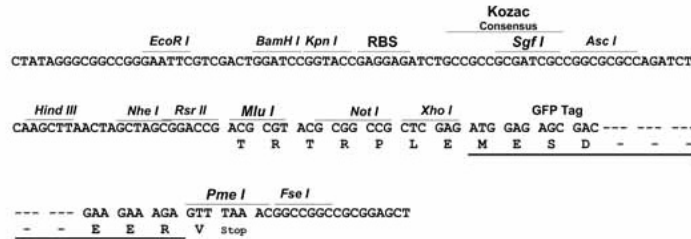
MYSEWRSLHLVIQNDQGHSTVLHSYPESVGREVANAVRPLGQVLGTPSVAGSENLLKTDKEVKWTMEVI
CYGLTLPLDGETVKYCDVYTDWIMALVLPKDSIPLPVIKEPNQYVQTILKHLQNLVPRQEQGSSQIRL
CLQVLRAIQKLARESSLMARETWEVLLFLQINDILLAPPTVQGGIAENLAEKLGVLFEVWLLACTRC
FPTPPYWK TAKEMVANWRHHPAVVEQWSKVICALTSRLLRFTYGPSFPAFKVPDEEDASLIPPEMDNECVA
QTWFRFLHMLSNPVDLSNPAAIISSTPKFQEQLNVSGMPQELNQYPCLKHLQPQIFFRAMRGISCLVDAFL
GISRPRSDSAPPTPVNRLSMPQSAAVSTTPPHNRRHRAVTVNKATMKTSTVSTAHASKVQHQTSSTSPLS
SPNQTSSEPRPLPAPRRPKVNSILNLFGSWLFDAAFVHCKLHNGINRDSMTAITTQASMEFRRKGSQMS
TDTMVSNPMFDASEFPDNYEAGRAEACGTLCRIFCSKKTGEEILPAYLSRFYMLLIQGLQINDYVCHPVL
ASVILNSPPLFCCDLKGIDVVVPYFISALETILPDRELSKFSYVNPTELRRSSINILLSLLPLPHHFGT
VKSEVVLGKFSNDDSSSYDKPITFLSLKLRLVNILIGALQTE TDPNNTQMILGAMLNIVQDSALLEAIG
CQMEMGGGENLKSRSRTNSGSISSASGGSTEPTTPDSERPAQALLRDYALNTDSAAGLLIRSIHLVTQRL
NSQWRQDMSISLAALLELSGLAKVKVMVDSGDRKRAISSVCTYIVYQCSRPAPLHSRDLHSMIVAFAFQCL
CVWLTEHPDMLDEKDCLKEVLEIVELGISGSKSKNNEQEVKYKGDKEPNPASM RVKDAAEATLTCIMQLL
GAFPSPSGPASPCSLVNETTLIKYSRLPTINKHSFRYFVLDNSVILAMLEQPLGNEQNDFFPSVTVLVRG
MSGRLAWAQQLCLLPRGAKANQKLFVPEPRVPKNDVGFKYSVKHRPFPEEVDKIPFVKADLSIPDLHEI
VTEELEERHEKLRSGMAQQIAYEIHLEQQSEELQKRSFPDPVTDCKPPPPAQEFQTARLFLSHFGFLSL
EALKEPANSRLPPLIALDSTIPGFFDDIGYLDLLPCRPFDTVFIFYMKPGQKTNQEILKNVSSRTVQP
HFLEFLLSLGWSVDVGRHPGWTGHVSTSWINCCDDGEGSQQEVISSEDIGASIFNGQKKVLYADALTE
IAFVVPSPVESL TDSLESNISDQSDSNMDLMPGILKQPSLTLELFPNHTDNLNSSQRLSPSSRMRLKPQ
GRPVPLGPETRVSVVVVERYDDIENFPLSELMTEISTGVETTANSSTSLRSTTLEKEVPVIFIHPLNTG
LFRIKIQGATGKFNMVIPLVDGMIVSRRALGFLVRQTVINICRRKRLESDSYSPPHVRRKQKITDIYNKY
RNKQLEPEFYTSLFQEVGLKNCS
  
```

TRTRPLE - GFP Tag - V

Restriction Sites: SgfI-MluI

Cloning Scheme:

Cloning sites used for ORF Shutting:

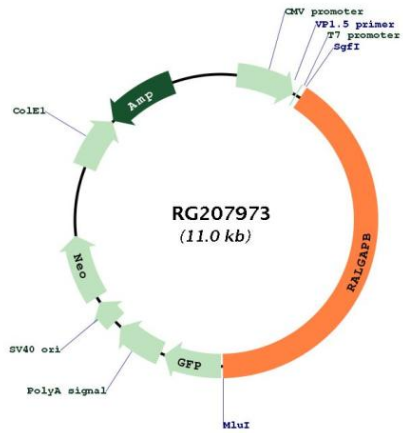


ACCN: NM_020336

ORF Size: 4482 bp

OTI Disclaimer:	The molecular sequence of this clone aligns with the gene accession number as a point of reference only. However, individual transcript sequences of the same gene can differ through naturally occurring variations (e.g. polymorphisms), each with its own valid existence. This clone is substantially in agreement with the reference, but a complete review of all prevailing variants is recommended prior to use. More info
OTI Annotation:	This clone was engineered to express the complete ORF with an expression tag. Expression varies depending on the nature of the gene.
Components:	The ORF clone is ion-exchange column purified and shipped in a 2D barcoded Matrix tube containing 10ug of transfection-ready, dried plasmid DNA (reconstitute with 100 ul of water).
Reconstitution Method:	<ol style="list-style-type: none"> 1. Centrifuge at 5,000xg for 5min. 2. Carefully open the tube and add 100ul of sterile water to dissolve the DNA. 3. Close the tube and incubate for 10 minutes at room temperature. 4. Briefly vortex the tube and then do a quick spin (less than 5000xg) to concentrate the liquid at the bottom. 5. Store the suspended plasmid at -20°C. The DNA is stable for at least one year from date of shipping when stored at -20°C.
RefSeq:	NM_020336.1
RefSeq Size:	8636 bp
RefSeq ORF:	4485 bp
Locus ID:	57148
UniProt ID:	Q86X10
Cytogenetics:	20q11.23
Gene Summary:	Non-catalytic subunit of the heterodimeric RalGAP1 and RalGAP2 complexes which act as GTPase activators for the Ras-like small GTPases RALA and RALB.[UniProtKB/Swiss-Prot Function]

Product images:



Circular map for RG207973