

## Product datasheet for **RG207964**

### **FOXG1 (NM\_005249) Human Tagged ORF Clone**

#### **Product data:**

Product Type:	Expression Plasmids
Product Name:	FOXG1 (NM_005249) Human Tagged ORF Clone
Tag:	TurboGFP
Symbol:	FOXG1
Synonyms:	BF1; BF2; FHKL3; FKH2; FKHL1; FKHL2; FKHL3; FKHL4; FOXG1A; FOXG1B; FOXG1C; HBF-1; HBF-2; HBF-3; HBF-G2; HBF2; HFK1; HFK2; HFK3; KHL2; QIN
Mammalian Cell Selection:	Neomycin
Vector:	pCMV6-AC-GFP (PS100010)
E. coli Selection:	Ampicillin (100 ug/mL)



[View online »](#)

**ORF Nucleotide Sequence:**

>RG207964 representing NM\_005249  
 Red=Cloning site Blue=ORF Green=Tags(s)

TTTTGTAATACGACTCACTATAGGGCGGCCGGGAATTCGTCGACTGGATCCGGTACCGAGGAGATCTGCC  
 GCC**CGGATCGCC**

ATGCTGGACATGGGAGATAGGAAAGAGGTGAAAATGATCCCCAAGTCCTCGTTTCAGCATCAACAGCCTGG  
 TGCCCCGAGGCGGTCCAGAACGACAACCACCACGCGAGCCACGGCCACCACAACAGCCACCACCCAGCA  
 CCACCACCACCACCACCACCATCACCACCACCCGCCGCCGCCGCCGCCGCCGCCGCCGCCGCCGCCGAG  
 CAGCAGCAGCCG  
 ACGACGACAAGGGCCCCAGCAGCTGCTGCTCCCGCCGCCACCGCCACCACCGGCCGCCGCCCTGGA  
 CGGGGCTAAAGCGGTGGGCTGGCGGCAAGGGCGAGCCGGGCGGGCGGGGAGCTGGCGCCCGTC  
 GGGCCGACGAGAAGGAGAAGGGCGCCGCCGCCGGGGGAGGAGAAGAAGGGGGCGGGCAGGGCGGCA  
 AGGACGGGAGGGGGCAAGGAGGGCGAGAAGAAGCAAGTACGAGAAGCCCGCTTACGCTACAA  
 CGCGCTCATCATGATGGCCATCCGGCAGAGCCCCGAGAAGCGGCTCACGCTCAACGGCATCTACGAGTTC  
 ATCATGAAGAACTTCCTTACTACCGCGAGAACAAGCAGGGCTGGCAGAACTCCATCCGCCACAATCTGT  
 CCCTCAACATGTCTTCGTGAAGGTGCCGCGCCACTACGACGACCCGGGCAAGGGCAACTACTGGATGCT  
 GGACCCGTCGAGCGACGACGTGTTTCATCGGCGGCACCACGGGCAAGCTGCGGCGCCGCTCCACCACCTCG  
 CGGGCCAAGCTGGCCTTCAAGCGCGGTGCGCGCCTCACCTCCACCGGCCTCACCTTCATGGACCGCGCCG  
 GCTCCCTCTACTGGCCATGTCGCCCTTCTGTCCCTGCACCACCCCGCCAGCAGCACTTTGAGTTA  
 CAACGGCACCACGTCGGCCTACCCAGCCACCCATGCCTACAGCTCCGTGTTGACTCAGAAGTCCGCTG  
 GGCAACAACCACTCCTTCTCCACCGCAACGGCCTGAGCGTGGACCGGCTGGTCAACGGGGAGATCCCGT  
 ACGCCACGCAACCTCACGGCCGCCGCTAGCCGCTCGGTGCCCTGCGGCTGTCGGTCCCTCCGCTC  
 TGGGACTACTCCCTCAACCCCTGCTCCGTCAACCTGCTCGCGGGCCAGACCAGTTACTTTTTCCCCAC  
 GTCCCGCACCCGTCATGACTTCGACAGCAGCAGCTCCATGAGCGCCAGGGCCACGTCCTCCTCCACGT  
 CGCCGACGGCCCTCGACCCTGCCCTGTGAGTCTTAAAGACCCTCTTGGCAAGTTTTACGACGGGACT  
 GTCTGGGGGACTGTCTGATTATTCACACATCAAATCAGGGGTCTTCTCAACCCTTAATACAT

**ACGCGTACGCGGCCGCTCGAG** - GFP Tag - GTTTAA

**Protein Sequence:**

>RG207964 representing NM\_005249  
 Red=Cloning site Green=Tags(s)

MLDMGDRKEVKMIPKSSFSINSLVPEAVQNDNHASHGHSHHPQHSHHHHHHHHHPPPPAPQPPPPPPQ  
 QQPPPPPPPPAPPPQTRGAPAAADDKGPQQLLLPPPPPPPPAAALDGAKAVGLGGKGEPPGGPGLAPV  
 GPDEKEKGAGAGGEEKGAGEGGKDGEGGKEGKNGKYEKPPFSYNALIMMAIRQSPEKRLTLNGIYEF  
 IMKNFPYRENKQGWQNSIRHNLNLMCFVKVPRHYDDPGKGNWMLDPSSDDVFIGGTTGLRRRSTTS  
 RAKLAFKRGARLTSTGLTFMDRAGSLYWPMSFSLHHPRASSTLSYNGTTSAYPSHPMPYSSVLTQNSL  
 GNNHSFSTANGLSVDRLVNGEIPYATHHLTAAALAASVPCGLSVPCSGTYSLNPCSVNLLAGQTSYFFPH  
 VPHPSMSTQSSTSMSARATSSSTSPQAPSTLPCESLRPSLPSFTTGLSGGLSDYFTHQNQGSSSNPLIH

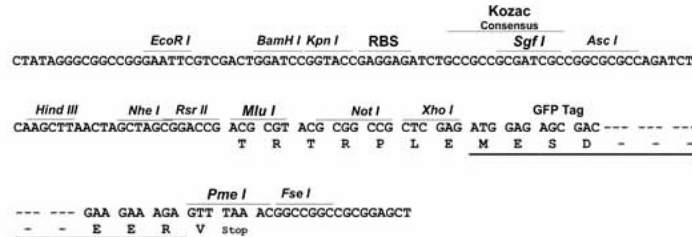
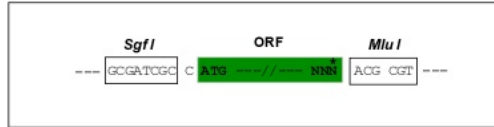
**TRTRPLE** - GFP Tag - V

**Restriction Sites:**

Sgfl-MluI

**Cloning Scheme:**

Cloning sites used for ORF Shutting:


**ACCN:** NM\_005249

**ORF Size:** 1467 bp

**OTI Disclaimer:** The molecular sequence of this clone aligns with the gene accession number as a point of reference only. However, individual transcript sequences of the same gene can differ through naturally occurring variations (e.g. polymorphisms), each with its own valid existence. This clone is substantially in agreement with the reference, but a complete review of all prevailing variants is recommended prior to use. [More info](#)
**OTI Annotation:** This clone was engineered to express the complete ORF with an expression tag. Expression varies depending on the nature of the gene.

**Components:** The ORF clone is ion-exchange column purified and shipped in a 2D barcoded Matrix tube containing 10ug of transfection-ready, dried plasmid DNA (reconstitute with 100 ul of water).

**Reconstitution Method:**

1. Centrifuge at 5,000xg for 5min.
2. Carefully open the tube and add 100ul of sterile water to dissolve the DNA.
3. Close the tube and incubate for 10 minutes at room temperature.
4. Briefly vortex the tube and then do a quick spin (less than 5000xg) to concentrate the liquid at the bottom.
5. Store the suspended plasmid at -20°C. The DNA is stable for at least one year from date of shipping when stored at -20°C.

**RefSeq:** [NM\\_005249.3](#), [NP\\_005240.3](#)
**RefSeq Size:** 2600 bp

**RefSeq ORF:** 1470 bp

**Locus ID:** 2290

**UniProt ID:** [P55316](#)

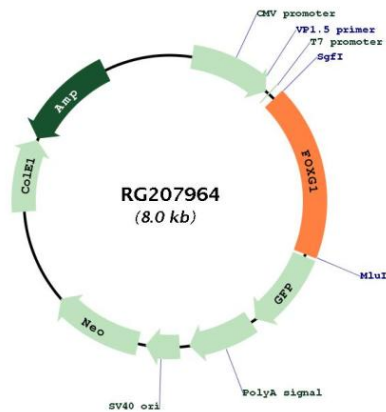
**Cytogenetics:** 14q12

**Domains:** FH

**Protein Families:** Druggable Genome, Transcription Factors

**Gene Summary:** This locus encodes a member of the fork-head transcription factor family. The encoded protein, which functions as a transcriptional repressor, is highly expressed in neural tissues during brain development. Mutations at this locus have been associated with Rett syndrome and a diverse spectrum of neurodevelopmental disorders defined as part of the FOXG1 syndrome. This gene is dysregulated in many types of cancer and is the target of multiple microRNAs that regulate the proliferation of tumor cells. [provided by RefSeq, Jul 2020]

**Product images:**



Circular map for RG207964