

## Product datasheet for **RG207960**

### Lipolysis Stimulated Lipoprotein Receptor (LSR) (NM\_205834) Human Tagged ORF Clone

#### Product data:

Product Type:	Expression Plasmids
Product Name:	Lipolysis Stimulated Lipoprotein Receptor (LSR) (NM_205834) Human Tagged ORF Clone
Tag:	TurboGFP
Symbol:	LSR
Synonyms:	ILDR3; LISCH7
Mammalian Cell Selection:	Neomycin
Vector:	pCMV6-AC-GFP (PS100010)
E. coli Selection:	Ampicillin (100 ug/mL)



[View online »](#)

**ORF Nucleotide Sequence:**

>RG207960 representing NM\_205834  
 Red=Cloning site Blue=ORF Green=Tags(s)

TTTTGTAATACGACTCACTATAGGGCGGCCGGGAATTCGTCGACTGGATCCGGTACCGAGGAGATCTGCC  
 GCC**CGGATCGCC**

ATGCAACAGGACGGACTTGGAGTAGGGACAAGGAACGGAAGTGGGAAGGGGAGGAGCGTGCACCCCTCT  
 GGCTTGGTGCAGCGCCGCCCCCTAAGTACTTTGGAAGGACGCGCGGCCAGACGCGCCAGACGGC  
 CGCGATGGCGCTGTTGGCCGGCGGGCTCTCCAGAGGGCTGGGCTCCACCCGGCCGCCGAGGCCGGAC  
 GCGGTCTGCTTCTGTTGGCTTCTGCTTAGCACCTGGTGCACAGCTCTGCCAGGGCCATCCAGGTGACCG  
 TGTCCAACCCCTACCACGTGGTATCCTCTCCAGCTGTGACCTGCCGTACCTACCAGATGACCTC  
 GACCCCAACGCAACCCATCGTCACTGGAAGTACAAGTCTTTCTGCCGGACCGCATCGCCGATGCCTTC  
 TCCCCGGCAGCGTCGACAACCAGCTCAATGCCAGCTGGCAGCCGGGAACCCAGGCTACAACCCCTACG  
 TTGAGTGCCAGGACAGCGTGCACCCGTAGGGTCTGGCCACCAAGCAGGGCAACGCTGTGACCTGGG  
 AGATTACTACCAGGGCCGGAGGATTACCATCACCGGAAATGCTGACCTGACCTTTGACCAGACGGCGTGG  
 GGGGACAGTGGTGTGATTACTGCTCCGTGGTCTCAGCCAGGACCTCCAGGGGAACAATGAGGCCATCG  
 CAGAGCTCATCGTCTTGGGAGGACCTCAGGGGTGGTGAAGTCTTACCTGGTTTTACGGCGGGGCCAT  
 AGAAGACTGGCTCTTCTGGTGTGGTATGCCTGGCTGCCTTCTCATCTTCTCCTCTGGGATCTGC  
 TGGTGCCAGTGTGCCCGCACACTTGTGCTGCTACGTACGGTGGCCCTGCTGCCAGACAAGTGTGCT  
 GCCCGAGGCCCTGTATGCCCGCCGCAAGCAGCCACCTCAGGTGTTCCAGCATTTATGCCCCAGCAC  
 CTATGCCACCTGTCTCCCGCAAGACCCACCCACCAGCTATGATCCCATGGGCCCTGCCTACAAC  
 GGGTACCCTGGAGGATACCCTGGAGACGTTGACAGGAGTAGCTCAGCTGGTGGCAAGGCTCCTATGTAC  
 CCCTGCTTCGGGACACGACAGCAGTGTGGCCTCTGAAGTCCGACAGTGGCTACAGGATTCAGGCCACCA  
 GCAGGACGACTCCATGCCGGTCTGTACTACATGGAGAAGGAGCTGGCCAACCTCGACCCTTCTCGACCT  
 GGCCCCCAGTGGCCGTGTGGAGCGGGCCATGAGTGAAGTACCTCCCTCCACGAGGACGACTGGCGAT  
 CTCGGCTTCCCGGGCCCTGCCCTCACCCGATCCGGGATGAGGAGTGGGGTGGCCACTCCCCCGGAG  
 TCCCAGGGGATGGGACCAGGAGCCGCCAGGGAGCAGGCAGGCGGGGGCTGGCGGCCAGGCGGCCCGG  
 GCCCGCTCCGTGGACGCCCTGGACGACCTCACCCCGGAGCACCAGGAGTCCAGGGAGCAGGTCTCCCA  
 CGAGTAATGGTGGGAGAAGCCGGCCCTACATGCCCGCGGAGCCGACGCGGGACGACCTATGACCA  
 AGACGACTCGAGGACTTCCACGCTCCCGGACCCCACTACGACGACTTCCAGTCTCGGAGCGCCCT  
 CCTGCCGACCCAGTCCACCACCACCGTACCCGGACCTCGGACAACGGCTCCAGGTCCGGGGAC  
 TCCCTATGATGGCGGGTACTGGAGGAGGCTGTGAGGAAGAAGGGTCCGAGGAGAGGAGAGACCCCA  
 CAAGGAGGAGGAGGAAGAGGCCTACTACCCGCCCGCCGCCCCCGTACTCGGAGACCGACTCGCAGGCG  
 TCCCGAGAGCGCAGGCTCAAGAAGAAGTTGGCCCTGAGTCGGGAAAGTTAGTCGTC

**ACGCGT**ACGCGGCCGCTCGAG - GFP Tag - GTTTAA

**Protein Sequence:**

>RG207960 representing NM\_205834  
 Red=Cloning site Green=Tags(s)

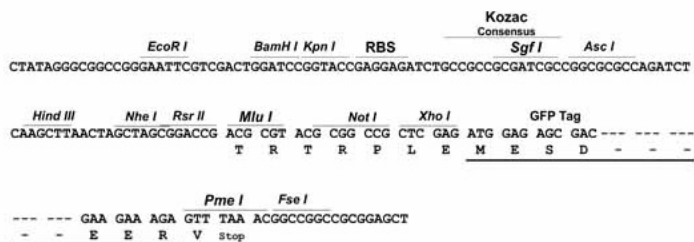
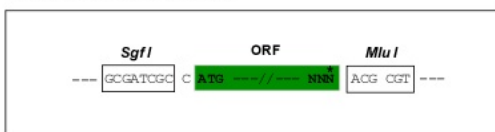
MQQDGLGVGTRNGSGKGRSVHPSWPWCAPRPLRYFGRDARARRAQTAAALLAGGLSRGLGSHPAAGR  
 AVVFVWLLLSTWCTAPARAIQVTVSNPYHVILFQVTLPTCYQMTSTPTQPIVIWKYSFCRDRIDAF  
 SPASVDNQLNAQLAAGNPGYNPYVEQCDSVRTVRVATKQGNVTLGDYYQRRITITGNADLTFDQTAW  
 GDSGVYYCSVVSQDLQGNNEAYAEILIVLGRVSGVAELLPGFQAGPIEDWLFVVVCLAFLIFLLGIC  
 WCQCCPHTCCCYVRCPCPKCCPEALYAAGKAATSGVPSIYAPSTYAHLSPAKTPPPAMIPMPAYN  
 GYPGGYPGDVDRSSAGQGSYVPLLRDTSVASEVRSYRIQASQDDSMRVLYYMEKELANFDPSRP  
 GPPSGRVERAMSEVTSLEHDDWRSRPSRGPALTPIRDEEWGGHSPRSPRGWDQEPAREQAGGWRARRPR  
 ARSVDALDDLTPPSTAESGSRSPSTNNGRSRAYMPPRSRSDLLYDQDDSRDFPRSRDPHYDDFRSRERP  
 PADPRSHHHRTRDPRDNGSRSGDLPYDGRLLLEEAVRKKGSEERRRPHKEEEEEAYPPAPPYSETSDSA  
 SRERLKKNLALSRESLVV

**TRTRPLE** - GFP Tag - V

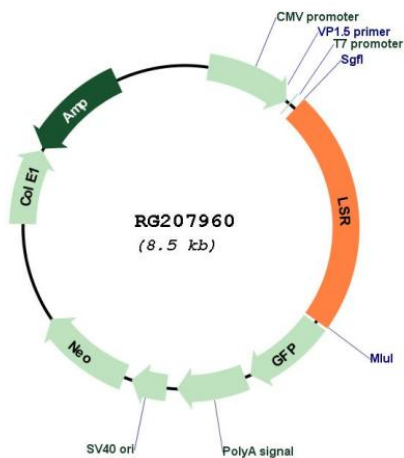
Restriction Sites: SgfI-MluI

Cloning Scheme:

Cloning sites used for ORF Shutting:



Plasmid Map:



ACCN: NM\_205834

ORF Size: 1947 bp

<b>OTI Disclaimer:</b>	<p>Due to the inherent nature of this plasmid, standard methods to replicate additional amounts of DNA in E. coli are highly likely to result in mutations and/or rearrangements. Therefore, OriGene does not guarantee the capability to replicate this plasmid DNA. Additional amounts of DNA can be purchased from OriGene with batch-specific, full-sequence verification at a reduced cost. Please contact our customer care team at <a href="mailto:custsupport@origene.com">custsupport@origene.com</a> or by calling 301.340.3188 option 3 for pricing and delivery.</p> <p>The molecular sequence of this clone aligns with the gene accession number as a point of reference only. However, individual transcript sequences of the same gene can differ through naturally occurring variations (e.g. polymorphisms), each with its own valid existence. This clone is substantially in agreement with the reference, but a complete review of all prevailing variants is recommended prior to use. <a href="#">More info</a></p>
<b>OTI Annotation:</b>	This clone was engineered to express the complete ORF with an expression tag. Expression varies depending on the nature of the gene.
<b>Components:</b>	The ORF clone is ion-exchange column purified and shipped in a 2D barcoded Matrix tube containing 10ug of transfection-ready, dried plasmid DNA (reconstitute with 100 ul of water).
<b>Reconstitution Method:</b>	<ol style="list-style-type: none"> <li>1. Centrifuge at 5,000xg for 5min.</li> <li>2. Carefully open the tube and add 100ul of sterile water to dissolve the DNA.</li> <li>3. Close the tube and incubate for 10 minutes at room temperature.</li> <li>4. Briefly vortex the tube and then do a quick spin (less than 5000xg) to concentrate the liquid at the bottom.</li> <li>5. Store the suspended plasmid at -20°C. The DNA is stable for at least one year from date of shipping when stored at -20°C.</li> </ol>
<b>RefSeq:</b>	<a href="#">NM_205834.3</a> , <a href="#">NP_991403.1</a>
<b>RefSeq Size:</b>	2292 bp
<b>RefSeq ORF:</b>	1806 bp
<b>Locus ID:</b>	51599
<b>UniProt ID:</b>	<a href="#">Q86X29</a>
<b>Cytogenetics:</b>	19q13.12
<b>Protein Families:</b>	Druggable Genome, Transcription Factors, Transmembrane
<b>Gene Summary:</b>	Probable role in the clearance of triglyceride-rich lipoprotein from blood. Binds chylomicrons, LDL and VLDL in presence of free fatty acids and allows their subsequent uptake in the cells (By similarity).[UniProtKB/Swiss-Prot Function]