

Product datasheet for **RG207953**

Radixin (RDX) (NM_002906) Human Tagged ORF Clone

Product data:

Product Type:	Expression Plasmids
Product Name:	Radixin (RDX) (NM_002906) Human Tagged ORF Clone
Tag:	TurboGFP
Symbol:	Radixin
Synonyms:	DFNB24
Mammalian Cell Selection:	Neomycin
Vector:	pCMV6-AC-GFP (PS100010)
E. coli Selection:	Ampicillin (100 ug/mL)



[View online »](#)

ORF Nucleotide Sequence:

>RG207953 representing NM_002906
 Red=Cloning site Blue=ORF Green=Tags(s)

TTTTGTAATACGACTCACTATAGGGCGGCCGGAATTCGTCGACTGGATCCGGTACCGAGGAGATCTGCC
 GCC**CGCATCGCC**

ATGCCGAAACCAATCAACGTAAGAGTAACATAATGGATGCTGAGCTGGAATTTGCCATTACGCCAATA
 CAACTGGCAAACAACTTTTTGACCAGGTGGTGAACAGTTGGTTTGCCTGAGGTCTGGTTTTTGGGCT
 GCAGTATGTAGACAGCAAAGTTATTCTACATGGCTTAACTAAATAAAAAGGTAAACACAGCAGGATGTT
 AAAAAAGAGAATCCTTTACAGTTCAAGTTTAGAGCTAAATTTCTTCTGAAGATGTTTCTGAGGAATTA
 TTCAAGAAATAACCCAGAGACTCTTCTTCTGCAAGTTAAAGAAGCCATCTTAAATGATGAGATATTTG
 CCCGCCAGAACTGCAGTTCTTTGGCTTCTATGCTGTCCAAGCCAAGTATGGAGATTACAATAAAGAG
 ATTCATAAGCCAGGCTACCTGGTAATGATAGACTCTACCCAGCGTATTGGAACAACAACTAA
 CAAAAGAACAGTGGGAAGAAAGAATACAGAAGTGGCATGAAGAATAGAGGAATGTTAAGGGAGGATTC
 TATGATGGAATACCTGAAGATTGCACAAGATCTAGAAATGTATGGAGTCAACTATTTTGAATAAAAAAT
 AAAAAAGGAACTGAATTTGGCTAGGTGTTGATGCTTTGGGTCTGAATATTTATGAGCATGACGACAAGT
 TAACACCTAAAAATGGTTTTCCCTGGAGTGAATCAGAAATATTTCAATTAATGACAAAAAATTTGTTAT
 AAAGCCAATCGACAAAAAGGCACCTGATTTTGTGTTTTATGCACCTCGTCTGAGAATCAATAAGAGGATT
 TTGGCCTTATGTATGGGAAACATGAATATACATGCGAAGAAGGAAGCCTGATACTATTGAAGTACAAC
 AGATGAAGGCTCAGGCTAGGGAGGAGAAACATCAGAAGCAGTTGGAAAGGGCACAATTAGAGAATGAAAA
 GGAGAAAAGAGAAATAGCAGAAAAGGAAAAGGAAAGAATAGAACGTGAAAAGGAAGACTAATGGAACGT
 CTAACAACAAATGAAGAGCAGACAATTAAGCTCAGAAAGAACTAGAAGAACAGACTCGAAAAGCTCTAG
 AACTGGATCAAGAACGAAAACGAGCAAAAAGAAGCAAGCAAGTGGAAAAGGAGCGTCTGAGTCTGTA
 AGAGGCAAAAGTCTGCCATAGCAAAAACAAGCTGCCGACCAGATGAAGAATCAGGAGCAGCTAGCAGCAGAA
 CTTGCTGAATTCAGTCCAAAGATTGCACTTCTAGAGGAAGCCAAGAAGAAAAGGAAAGGAAAGCTACTG
 AGTGGCAACACAAAGCTTTTGCAGCCCAGGAAGACTTGGAAAAGACCAAGAAGAGTTAAAAACTGTGAT
 GTCTGCCCCCTCCACCTCCACCACCAGTCATTCTCCAACAGAAAACGAACATGATGAACACGAT
 GAGAATAATGCTGAAGCTAGTGTGAATATCAATGAAGGGTAAATGAACCATAGAAGCGGGAAGAAC
 GTGTAACCGAAACACAGAAAAATGAGCGTGTAAAGAAGCAACTTCAGGCATTAAGTTCAGAATTAGCCCA
 AGCCAGAGATGAAACCAAGAAAACAAAAATGATGTTCTTCATGCTGAGAATGTTAAAGCAGGCCGTGAT
 AAGTACAAGACTCTGCGACAGATTTCGACAAGGCAATACAAGCAGCGTATCGATGAGTTGAAGCAATG

ACGCGTACGCGGCCGCTCGAG - GFP Tag - GTTTAA

Protein Sequence:

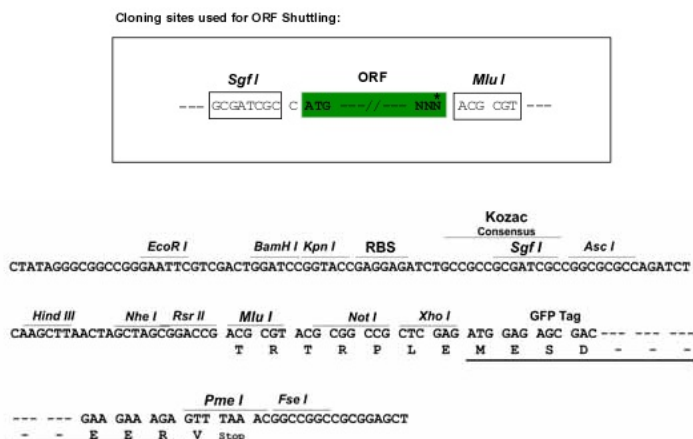
>RG207953 representing NM_002906
 Red=Cloning site Green=Tags(s)

MPKPINVRVTMDAELEFAIQPNTTGKQLFDQVVKTVGLREVWFFGLQYVDSKGYSTWLKLNKKVTTQDDV
 KKENPLQFKFRAKFFPEDVSEELIQEITQRLFFLQVKEAILNDEIYCPPEAVLLASYAVQAKYGDYNKE
 IHKPGYLANDRLLPQRVLEQHKLTKEQWEERIQNWHEEHRGMLREDSMMEYLKIAQDLEMYGVNYFEIKN
 KKGTELWLGVDA LGLNIYEHDDKLTPIKGFPSWSEIRNISFNDKKFVIKPIDKKAPDFVFYAPRLRINKRI
 LALCMGNHEL YMRRRKPDTEVQQMKAQAREEKHQKQLERAQLENEKEKREIAEKEKERIEREKEELMER
 LKQIEEQTIKAQKEL EEQTRKALELDQERKRAKEEAERLEKERRAAEEAKSAIAKQAADQMKNQEQLAAE
 LAEFTAKIALLEEAKKKKEEEATEWQHKAFAAQEDLEKTEELKTVMSAPPPPPPPVPIPTENEHDEHD
 ENNAEASAE LSNEGVMNHRSEEEERVETETQKNERVKKQLQAL SSELAQARDETKKTQNDVLHAENVKAGRD
 KYKTLRQIRQGNTKQRIDEFEAM

TRTRPLE - GFP Tag - V

Restriction Sites:

SgfI-MluI

Cloning Scheme:


ACCN: NM_002906

ORF Size: 1749 bp

OTI Disclaimer: The molecular sequence of this clone aligns with the gene accession number as a point of reference only. However, individual transcript sequences of the same gene can differ through naturally occurring variations (e.g. polymorphisms), each with its own valid existence. This clone is substantially in agreement with the reference, but a complete review of all prevailing variants is recommended prior to use. [More info](#)

OTI Annotation: This clone was engineered to express the complete ORF with an expression tag. Expression varies depending on the nature of the gene.

Components: The ORF clone is ion-exchange column purified and shipped in a 2D barcoded Matrix tube containing 10ug of transfection-ready, dried plasmid DNA (reconstitute with 100 ul of water).

Reconstitution Method:

1. Centrifuge at 5,000xg for 5min.
2. Carefully open the tube and add 100ul of sterile water to dissolve the DNA.
3. Close the tube and incubate for 10 minutes at room temperature.
4. Briefly vortex the tube and then do a quick spin (less than 5000xg) to concentrate the liquid at the bottom.
5. Store the suspended plasmid at -20°C. The DNA is stable for at least one year from date of shipping when stored at -20°C.

RefSeq: [NM_002906.3](#), [NP_002897.1](#)

RefSeq Size: 4498 bp

RefSeq ORF: 1752 bp

Locus ID: 5962

UniProt ID: [P35241](#)

Cytogenetics: 11q22.3

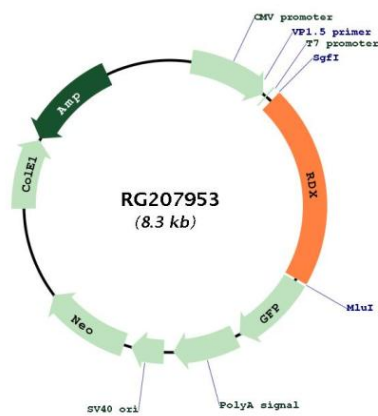
Domains: B41, ERM

Protein Families: Druggable Genome

Protein Pathways: Regulation of actin cytoskeleton

Gene Summary: Radixin is a cytoskeletal protein that may be important in linking actin to the plasma membrane. It is highly similar in sequence to both ezrin and moesin. The radixin gene has been localized by fluorescence in situ hybridization to 11q23. A truncated version representing a pseudogene (RDXP2) was assigned to Xp21.3. Another pseudogene that seemed to lack introns (RDXP1) was mapped to 11p by Southern and PCR analyses. Multiple alternatively spliced transcript variants encoding different isoforms have been found for this gene. [provided by RefSeq, May 2012]

Product images:



Circular map for RG207953