

Product datasheet for **RG207938**

FAM80A (RIMKLA) (NM_173642) Human Tagged ORF Clone

Product data:

Product Type:	Expression Plasmids
Product Name:	FAM80A (RIMKLA) (NM_173642) Human Tagged ORF Clone
Tag:	TurboGFP
Symbol:	FAM80A
Synonyms:	FAM80A; NAAGS; NAAGS-II; NAAGS2
Mammalian Cell Selection:	Neomycin
Vector:	pCMV6-AC-GFP (PS100010)
E. coli Selection:	Ampicillin (100 ug/mL)
ORF Nucleotide Sequence:	>RG207938 representing NM_173642 Red=Cloning site Blue=ORF Green=Tags(s)

TTTTGTAATACGACTCACTATAGGGCGGCCGGAATTCGTCGACTGGATCCGGTACCGAGGAGATCTGCC
GCC**CGGATCGCC**

ATGGACCAGATCGCCGTCACCATCGTCGGCGGCCACCTCGGCCTCCAGCTAAACCAGAAGGCCCTCACCA
CTTTCCCGGATGTGGTGCTTGTACGGGTACCCACACCCTCAGTGCAGTCAGACAGTGACATCACTGTCTCT
GCGACACCTGGAGAAGCTGGGCTGCCGTTGGTCAATCGCCACAGAGCATCTTAAATTGCATCAACAAA
TTCTGGACGTTCCAAGAAGCTGGCTGGACATGGGGTCCCATGCCAGACACCTTCTCCTATGGTGGGCATG
AAGACTTTTCAAAAATGATTGATGAAGCTGAGCCCTGGGCTACCCAGTCGTGGTGAAGAGCACACGAGG
CCACCGGGGAAAAGCTGTTTTCTGGCAAGAGATAAACATCACCTCTCTGACATCTGCCATCTGATCCGC
CACGATGTGCCCTACCTGTTCCAGAAGTACGTGAAGGAGTCCCATGGAAAAGGACATCCGGGTGGTGGTGG
TAGGGGGCCAGGTCATAGGCTCTATGCTTCGCTGCTCCACTGATGGACGGATGCAGAGCAACTGCTCTCT
CGGTGGCGTGGGCGTCAAGTGTCCGCTGACAGAACAAAGGCAAGCAGTTGGCTATTCAGGTGTCCAACATC
CTAGGCATGGACTTCTGTGGCATTGATCTCCTTATCATGGACGATGGCTCCTTTGTGGTGTGTGAGGCAA
ATGCTAATGTTGGCTTCTAGCCTTTGACCAGGCATGCAACTTAGATGTGGGTGGGATCATTGCAGACTA
TACCATGTCTTGTGCCAAATAGGCAGACTGGAAAGATGGCTGTCTCCAGGACTGTCGAGTCCAAGG
GAGAAGAACGAGCCGGATGGCTGTCTCAGCTCAGGGAGTTGCAGAGAGCGCTATACCATCAACAGTG
GGTCTACCTCTAGCGAAAAGTGAAGCTGAACTGGGAGAGATCCGGGATTCTCAGCAAGCACAAATGGGGGC
CCCACCCTCCATGCTGCCGAACCTGGCTACAACATTAACAACAGGATTGCTTCTGAGTTAAAACCTTAAG

AC**CGGCCGCT**CGAG - GFP Tag - GTTTAA



[View online »](#)

Protein Sequence: >RG207938 representing NM_173642
Red=Cloning site Green=Tags(s)

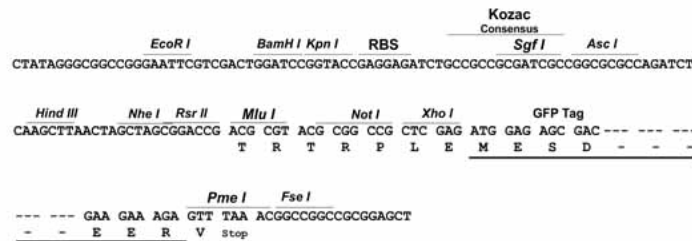
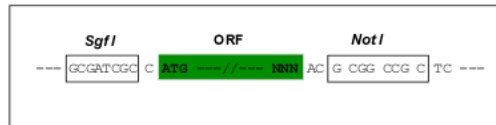
MDQIAVTIVGGHGLQLNQKALTTFPDVLVVRVPTPSVQSDSDITVLRHLEKLGCRLLVNRPQSILNCINK
 FWTFQELAGHGVPMPDFTFSYGGHEDFSKMIDEAEPLGYPVVVKSTRGHRGKAVFLARDKHHLSDICHLIR
 HDVPYLFQKYVKESHGKDIRVVVVGQVIGSMLRCSTDGRMQSNCSLGGVGVKCPLETEQGKQLAIQVSNI
 LGMDFCGIDLLIMDDGSFVVCEANANVGFLAFDQACNLDVGGIIADYTMSLLPNRQTGKMAVLPGLSSPR
 EKNEPDGCASAQGVAESVYTINSGSTSSESEPELGEIRDSSASTMGAPPSMLPEPGYNINNRIASELKLLK

TRPLE - GFP Tag - V

Restriction Sites: SgfI-NotI

Cloning Scheme:

Cloning sites used for ORF Shuttling:



ACCN: NM_173642

ORF Size: 1173 bp

OTI Disclaimer: The molecular sequence of this clone aligns with the gene accession number as a point of reference only. However, individual transcript sequences of the same gene can differ through naturally occurring variations (e.g. polymorphisms), each with its own valid existence. This clone is substantially in agreement with the reference, but a complete review of all prevailing variants is recommended prior to use. [More info](#)

OTI Annotation: This clone was engineered to express the complete ORF with an expression tag. Expression varies depending on the nature of the gene.

Components: The ORF clone is ion-exchange column purified and shipped in a 2D barcoded Matrix tube containing 10ug of transfection-ready, dried plasmid DNA (reconstitute with 100 ul of water).

Reconstitution Method:

1. Centrifuge at 5,000xg for 5min.
2. Carefully open the tube and add 100ul of sterile water to dissolve the DNA.
3. Close the tube and incubate for 10 minutes at room temperature.
4. Briefly vortex the tube and then do a quick spin (less than 5000xg) to concentrate the liquid at the bottom.
5. Store the suspended plasmid at -20°C. The DNA is stable for at least one year from date of shipping when stored at -20°C.

RefSeq: [NM_173642.2](#)

RefSeq Size: 10583 bp

RefSeq ORF: 1176 bp

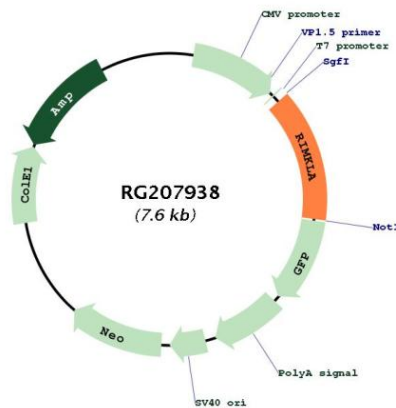
Locus ID: 284716

UniProt ID: [Q8IXN7](#)

Cytogenetics: 1p34.2

Gene Summary: Catalyzes the synthesis of N-acetyl-L-aspartyl-L-glutamate (NAAG) and N-acetyl-L-aspartyl-L-glutamyl-L-glutamate.[UniProtKB/Swiss-Prot Function]

Product images:



Circular map for RG207938