

Product datasheet for **RG207920**

HLTF (NM_003071) Human Tagged ORF Clone

Product data:

Product Type:	Expression Plasmids
Product Name:	HLTF (NM_003071) Human Tagged ORF Clone
Tag:	TurboGFP
Symbol:	HLTF
Synonyms:	HIP116; HIP116A; HLTF1; RNF80; SMARCA3; SNF2L3; ZBU1
Mammalian Cell Selection:	Neomycin
Vector:	pCMV6-AC-GFP (PS100010)
E. coli Selection:	Ampicillin (100 ug/mL)
ORF Nucleotide Sequence:	>RG207920 representing NM_003071 Red=Cloning site Blue=ORF Green=Tags(s)

TTTTGTAATACGACTCACTATAGGGCGGCCGGAATTCGTCGACTGGATCCGGTACCGAGGAGATCTGCC
GCC**CGATCGCC**

ATGTCCTGGATGTTCAAGAGGGATCCAGTTTGAAGTACTTGCAGACTGTCCAGTATGGAGTTCATGGAA
ATTTCCACGCCTCTCATATCCAACCTTTCTTCCACGTTTGAATCCAAGATGTTATCCCTCCAGATGA
CTTTCTAACTAGTGATGAAGAAGTAGATCCGTTTTATTGGAAGTTGAGAGGTCATGTGGTTGGACTA
CGCTATTACACGGGAGTAGTTAATAATAATGAAATGGTTCATTACAACGAGATCCTAATAACCCCTATG
ATAAGAATGCAATTAAGTAAACAATGTGAATGGAAATCAAGTTGGCCATTTAAAGAAAGAGCTTGCAAG
TGCTTTGGCCTATATCATGGACAACAAATTGGCACAATTTGAAGGGTAGTTCCTTTTGGTGCAAAACAAT
GCTTTTACCATGCCTCTGCATATGACTTTTTGGGAAAAGAAAATAGAAAAGCGTTTCAGATCAGT
TGAAGAAACATGGATTTAAATGGGTCCTGCACAAAAAATTTAGGATTCATTTGGAAAGTGGTTGGGG
CTCTGGAAGAGCTGGACCAAGCTATAGTATGCCAGTGCATGCTGCAGTACAGATGACAACGAAACAGCTT
AAAACAGAATTTGACAAATGTTTGAAGATTTAAAAGAAGATGATAAAACCCATGAAATGGAACCAAGCTG
AGGCTATTGAAACACCACTGCTCCACATCAAAAACAAGCTCTAGCTTGGATGGTGTACACGGGAAAATAG
CAAAGAACCTCCACCATTCTGGGAACAGCGAAATGACTTATACTATAACAATAACAAATTTTCTGAG
AAGGACCGACAGAAAATGTCCATGGAGGAATTTAGCTGATATGGGTTTGGGTAACCACTTTACAG
CCATTGCAGTAATCCTTACCAACTCCATGATGGCAGACCTCTTCTATTGAAAGAGTTAAAAGAATCT
ACTGAAGAAGGAATATAATGTTAACGATGACTCTATGAACTTGGAGGAAACAATACCAGTGAAAAGGCA
GATGGACTAAGCAAAGACGCATCTAGATGTAGTGAACAACCCAGTATTTAGATATCAAGGAGAAGAGTA
AGTTTCGCATGTCAGAATTGTCTAGCTCCCGCCCCAAAAGAAGAAAACCTGCTGTCCAGTACATAGAAA
CAGTGATTCAGAGGAAATGAAACAAGTGAATGCCCGAGAAAATGAAAGGCAAACCTGAAAAATGTACAG
TCTGAACTAAAGGCAGGGCGAAAGGATCTTAAAGTTATAGAAGATGTGCATTTGCATGTGCATTAA
CTTCATCTGTTCTACAACAAAAAGAAAATGTTGAAAAAGGAGCTTGTGCAGTGGAGGGTCAAAGAA
AACTGATGTTGAGGAGAGACCAAGAACAACACTGATCATCTGTCCGTTTCTGTGTTAAGCAACTGGATT



[View online >](#)

```
GACCAGTTGGACAACATATAAAATCAGATGTACACTTGAATTTTATGTTTATTATGGTCTGATCGTA
TTAGAGAACCGGCCTTACTTTCAAAACAGGATATTGTTTTGACTACGTATAATATTTAACTCATGACTA
TGGAACTAAAGGAGATAGTCCATTACATAGCATAAGGTGGCTAAGAGTGATCCTGGATGAAGGACATGCC
ATACGAAATCCAATGCTCAGCAGACAAAAGCTGACTTGACTTAGAATCAGAAAGAAGATGGGTTTTGA
CAGGTA CTCCAATCCAGAATCTTTAAAGGACTTGTGGTCTCTTCTTTTCTTTTAAAACCTAAACCATT
TATTGATAGAGAATGGTGGCATAGAACAATACAGCGTCTGTACAATGGGAGATGAAGGAGGACTTAGG
CGTTTACAGTCCCTAATTAATAAATTACACTTAGAAGAACAAGACAAGCAAAATTAAGGAAAACCTG
TTTTGGAGTTACCAGAAGCTAAAGTATTTATTCAGCACATTACACTTTCAGATGAAGAGAGAAAGATTTA
TCAGTCTGTGAAAAATGAAGGCAGAGCCACTATTGGAAGGTATTTAATGAAGGGACTGTCTGGCACAT
TATGCAGATGTCTGGGTCTTTTCTTAGACTGCGGCAAAATTTGTTGCCATACTTACCTTCTTACAAATG
CAGTGTCTTCCAATGGCCCTCAGGAAATGATACACCTGAAGAACTGAGAAAGAAGTTAATAAGGAAGAT
GAAGTTAATTCTGAGCTCAGGTTAGATGAGGAATGTGCAATTTGCTGGATTCTTTAACAGTCTCTGTG
ATAACACATTGTGCACATGTATTTGTAACCCTGTATTTGCCAAGTCATTCAGAATGAGCAGCCACATG
CTAAATGCCCTTATGCAGAAATGATATACATGAAGATAATTTATTAGAATGCTCCAGAAGAATTAGC
ACGTGACAGTGAGAAAAAGTCTGATATGGAATGGACATCCAGTCAAAGATTAATGCGCTAATGCACGCA
TTGACTGACTTAAGAAAAGAAATCCCAACATAAAAAGTTTGGTTGTTTCTCAGTTTACAACATTCTGT
CTTTAATAGAAATACCACTTAAAGCCTCTGGATTTGTGTTTACTCGTTGGATGGTTCCATGGCCAAAA
GAAAAGAGTTGAATCAATTCAGTGTCTTCAAAACTGAAGCAGGATCTCCAATAATGCTTCTGTCC
TTAAAAGCAGGTGGAGTTGGTTTGAATCTGTCTGCAGCTTCTCGAGTGTTTTAAATGGATCCAGCCTGGA
ATCCTGTCTGTAAGATCAGTGTCTTGCAGATGCCATAGACTTGGTCAGAAGCAAGAAGTTATCATCAC
AAAATTCATTGTAAGGACTCTGTTGAAGAAAATATGCTGAAAATACAAAACAAAAGAGAGAAGTTGCA
GCAGGAGCCTTTGGAACATAAAAACCAATGCTGACGAAATGAAACAAGCCAAAATTAATGAAATCAGAA
CATTAATTGACTTA
```

ACGCGTACGCGGCCGCTCGAG - GFP Tag - GTTTAA

Protein Sequence:

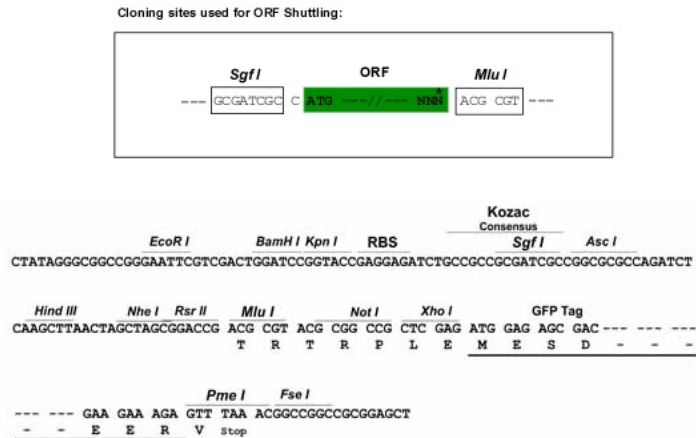
>RG207920 representing NM_003071
 Red=Cloning site Green=Tags(s)

```
MSWMFKRDPVWKYLQTVQYGVHGNFPRLSYPTFFPRFEFQDVIPPDDLTSDEEVDVSLFGLRHVVGL
RYYTGVVNNEMVALQRDPNNPYDKNAIKVNNVNGNQVGHLLKELAGALAYIMDNKLAQIEGVVPPGANN
AFTMPLHMTFWGKEENRKA VSDQLKKHGFKLGPAPKTLGFNLESGWGSGRAGPSYSMPVHA AVQMTTEQL
KTEFDKLFEDLKEDDKTHEMEPAEAIETPLLPHQKQALAWMVSRENSKELPPFWEQRNDLYYNTITNFSE
KDRPENVHGGILADDMGLGKTLTAIAVILT NFHDGRPLPIERVKKNLLKKEYNVNDDSMKLGNNNTSEKA
DGLSKDASRCSEQPSISDIKEKSKFRMSELSSSRPKRRKTAVQYIESSDSEEIETSEL P QKMKGKLNK VQ
SETKGRAKGSSKVI EDVAFACAL TSSVPTTKKMLKKGACAVEGSKKTDVEERPRTTLIICPLSVLSNWI
DQFGQHIKSDVHLNFYVYVYGPDIR E PALLSKQDIVL TTYNIL THDYGTKGDSPLHSIRWLRVILDEGHA
IRPNQAQTKAVLDLESERRWVLTGTPIQNSLKDLSL SFLKLPKPIDREWWHRTIQRPVTMGDEGLR
RLQSLIKNITLRRTKTSIKGKPVLELPERKVF IQHITLSDEERKIYQSVKNEGRATIGRYFNEGTVLAH
YADV LGLLLRLRQICCHTYLLTNAVSSNGPSGNDTPEELRKLI RKMKLI LSSGSDEECAICLDSLTPV
ITHCAHFVCKPCICQVIQNEQPHAKCPLCRNDIHEDNLLCEPPEELARDSEKKS DM EWTSSSKINALMHA
LTDLRKKNPNIKSLVVSQFTTFLSIEIPLKASGFV FTRLDGSM A QKRVESIQC FQNT EAGSPTIMLLS
LKAGGVGLNLSAASRVFLMDPAWNPA AEDQCFDRCHRLGQKQEV IITKFI VKDSVEENMLKI QNKKRELA
AGAFGT KKPNADEM KQAKINEIRTLIDL
```

TRTRPLE - GFP Tag - V

Restriction Sites:

Sgfl-MluI

Cloning Scheme:


ACCN: NM_003071

ORF Size: 3024 bp

OTI Disclaimer: Due to the inherent nature of this plasmid, standard methods to replicate additional amounts of DNA in *E. coli* are highly likely to result in mutations and/or rearrangements. Therefore, OriGene does not guarantee the capability to replicate this plasmid DNA. Additional amounts of DNA can be purchased from OriGene with batch-specific, full-sequence verification at a reduced cost. Please contact our customer care team at custsupport@origene.com or by calling 301.340.3188 option 3 for pricing and delivery.

The molecular sequence of this clone aligns with the gene accession number as a point of reference only. However, individual transcript sequences of the same gene can differ through naturally occurring variations (e.g. polymorphisms), each with its own valid existence. This clone is substantially in agreement with the reference, but a complete review of all prevailing variants is recommended prior to use. [More info](#)

OTI Annotation: This clone was engineered to express the complete ORF with an expression tag. Expression varies depending on the nature of the gene.

Components: The ORF clone is ion-exchange column purified and shipped in a 2D barcoded Matrix tube containing 10ug of transfection-ready, dried plasmid DNA (reconstitute with 100 ul of water).

Reconstitution Method:

1. Centrifuge at 5,000xg for 5min.
2. Carefully open the tube and add 100ul of sterile water to dissolve the DNA.
3. Close the tube and incubate for 10 minutes at room temperature.
4. Briefly vortex the tube and then do a quick spin (less than 5000xg) to concentrate the liquid at the bottom.
5. Store the suspended plasmid at -20°C. The DNA is stable for at least one year from date of shipping when stored at -20°C.

RefSeq: [NM_003071.3](#), [NP_003062.2](#)

RefSeq Size: 5351 bp

RefSeq ORF: 3030 bp

Locus ID: 6596

UniProt ID: [Q14527](#)

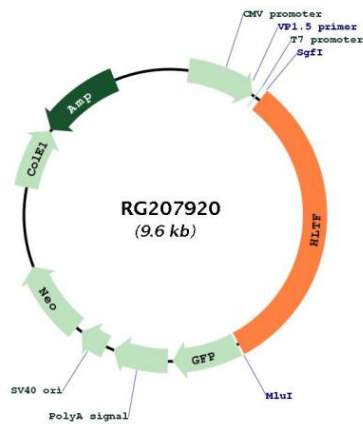
Cytogenetics: 3q24

Domains: SNF2_N, DEAD, helicase_C, RING

Protein Families: Druggable Genome, Transcription Factors

Gene Summary: This gene encodes a member of the SWI/SNF family. Members of this family have helicase and ATPase activities and are thought to regulate transcription of certain genes by altering the chromatin structure around those genes. The encoded protein contains a RING finger DNA binding motif. Two transcript variants encoding the same protein have been found for this gene. However, use of an alternative translation start site produces an isoform that is truncated at the N-terminus compared to the full-length protein. [provided by RefSeq, Jul 2008]

Product images:



Circular map for RG207920