

Product datasheet for **RG207876**

RASL10B (NM_033315) Human Tagged ORF Clone

Product data:

Product Type: Expression Plasmids
Tag: TurboGFP
Symbol: RASL10B
Synonyms: RRP17; VTS58635
Mammalian Cell Selection: Neomycin
Vector: pCMV6-AC-GFP (PS100010)
E. coli Selection: Ampicillin (100 ug/mL)

ORF Nucleotide Sequence: >RG207876 representing NM_033315
Red=Cloning site Blue=ORF Green=Tags(s)

TTTTGTAATACGACTACTATAGGGCGCCGGGAATTCGTGACTGGATCCGGTACCGAGGAGATCTGCC
GCC**GCGATCGCC**

ATGGTCTCCACCTACCGGTGGCCGTGCTGGGGCGCGAGGTGTGGCAAGAGTGCCATCGTGCCAGT
TCTTGTACAACGAGTTCAGCGAGGTCTGCGTCCCCACCACCGCCCGCCCTTTACCTGCGCTGCTGCT
CATGAACGGCCACGTGCACGACCTCCAGATCCTCGACTTCCACCCATCAGCGCCTTCCCTGTCAATACG
CTCCAGGAGTGGGCAGACACCTGCTGCAGGGGACTCCGGAGTGTCCACGCCTACATCCTGGTCTACGACA
TCTGCTGCTTTGACAGCTTTGAGTACGTCAAGACCATCCGCCAGCAGATCCTGGAGACGAGGGTGATCGG
AACCTCAGAGACGCCATCATCATCGTGGCAACAAGCGGGACCTGCAGCGCGGACGCGTGATCCCGCGC
TGGAACGTGTCGCACCTGGTACGCAAGACCTGGAAGTGCAGGCTACGTGGAATGCTCGGCAAGTACAAC
GGCACATCCTGCTGCTTTCAGCGAGCTGCTCAAGAGCGTCCGGCTGCGCCCGTTGCAAGCACGTGCACGC
TGCCCTGCGCTTCCAGGGCGCGCTGCGCCCAACCGCTGCGCCATCATG

AG**CGGACCG**ACGCGTACGCGCCGCTCGAG - GFP Tag - GTTTAA

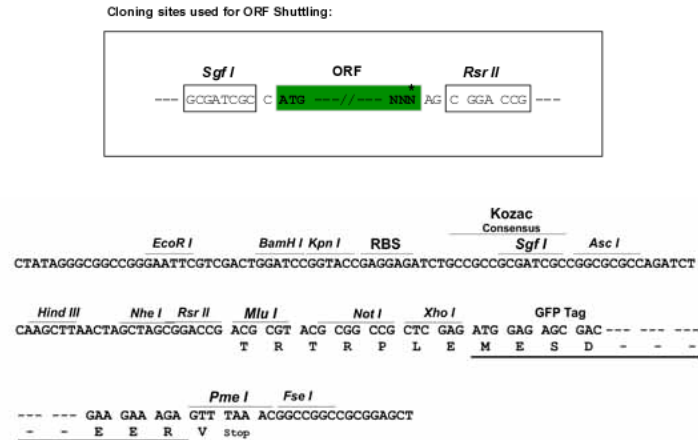
Protein Sequence: >RG207876 representing NM_033315
Red=Cloning site Green=Tags(s)

MVSTYRVAVLGARGVGKSAIVRQFLYNEFSEVCPPTARRLLYLPVVMNGHVHDLQILDFFPPISAFPVNT
LQEWADTCCRGLRSVHAYILVYDICCDFSFEYVKTIHQILETRVIGTSETPIIIVGNKRDLRGRVIPR
WNVSHLVKRKTKWCGYVECSAKYNWHILLLFSELLKSVGRCARCKHVHAALRFQALRRNRCAIM

SG**P**TRRRLE - GFP Tag - V

Restriction Sites: SgfI-RsrII



Cloning Scheme:


ACCN: NM_033315

ORF Size: 609 bp

OTI Disclaimer: The molecular sequence of this clone aligns with the gene accession number as a point of reference only. However, individual transcript sequences of the same gene can differ through naturally occurring variations (e.g. polymorphisms), each with its own valid existence. This clone is substantially in agreement with the reference, but a complete review of all prevailing variants is recommended prior to use. [More info](#)

OTI Annotation: This clone was engineered to express the complete ORF with an expression tag. Expression varies depending on the nature of the gene.

Components: The ORF clone is ion-exchange column purified and shipped in a 2D barcoded Matrix tube containing 10ug of transfection-ready, dried plasmid DNA (reconstitute with 100 ul of water).

Reconstitution Method:

1. Centrifuge at 5,000xg for 5min.
2. Carefully open the tube and add 100ul of sterile water to dissolve the DNA.
3. Close the tube and incubate for 10 minutes at room temperature.
4. Briefly vortex the tube and then do a quick spin (less than 5000xg) to concentrate the liquid at the bottom.
5. Store the suspended plasmid at -20°C. The DNA is stable for at least one year from date of shipping when stored at -20°C.

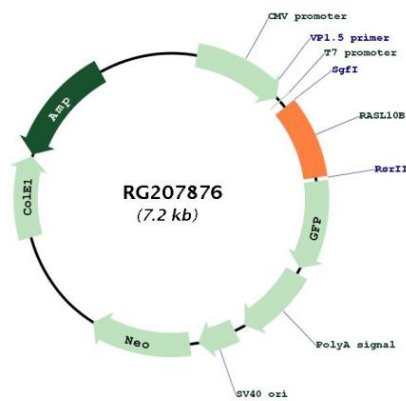
Note: Plasmids are not sterile. For experiments where strict sterility is required, filtration with 0.22um filter is required.

RefSeq: [NM_033315.4](#)

RefSeq Size: 3157 bp

RefSeq ORF:	612 bp
Locus ID:	91608
UniProt ID:	Q96S79
Cytogenetics:	17q12
Domains:	RAS, RAB
Gene Summary:	May facilitate the release of atrial natriuretic peptide by cardiomyocytes and hence play a role in the regulation of arterial pressure.[UniProtKB/Swiss-Prot Function]

Product images:



Circular map for RG207876