

## Product datasheet for **RG207873**

### LAR (PTPRF) (NM\_130440) Human Tagged ORF Clone

#### Product data:

Product Type:	Expression Plasmids
Product Name:	LAR (PTPRF) (NM_130440) Human Tagged ORF Clone
Tag:	TurboGFP
Symbol:	PTPRF
Synonyms:	BNAH2; LAR
Mammalian Cell Selection:	Neomycin
Vector:	pCMV6-AC-GFP (PS100010)
E. coli Selection:	Ampicillin (100 ug/mL)
ORF Nucleotide Sequence:	>RG207873 representing NM_130440 Red=Cloning site Blue=ORF Green=Tags(s)

TTTTGTAATACGACTCACTATAGGGCGGCCGGAATTCGTCGACTGGATCCGGTACCGAGGAGATCTGCC  
GCC**CGATCGCC**

ATGGCCCTGAGCCAGCCCCAGGGAGGACGATGGTGCCCTTGTGCCTGCACTGGTGATGCTTGGTTTGG  
TGGCAGGCGCCATGGTGACAGCAAACCTGTCTTCATTAAGTCCCTGAGGACCAGACTGGGCTGTCAGG  
AGGGGTAGCCTCCTTCGTGTGCCAAGCTACAGGAGAACCAAGCCGCGCATCACATGGATGAAGAAGGGG  
AAGAAAGTCAGCTCCCAGCGCTTCGAGGTCAATTGAGTTTGATGATGGGGCAGGGTCAGTCTCGGATCC  
AGCCATTGCGGGTGCAGCGAGATGAAGCCATCTATGAGTGTACAGCTACTAACAGCCTGGGTGAGATCAA  
CACTAGTGCCAAGCTCTCAGTGCTCGAAGAGGAACAGCTGCCCCCTGGGTCCCTTCCATCGACATGGGG  
CCTCAGCTGAAGGTGGTGAGAAGGCACGCACAGCCACCATGCTATGTGCCGAGGCGGAAATCCAGACC  
CTGAGATTTCTTGGTTCAAGGACTTCCTTCTGTAGACCCTGCCACGAGCAACGGCCGCATCAAGCAGCT  
GCGTTCAGGTGCCTTGCAGATAGAGAGCAGTGAGGAATCCGACCAAGGCAAGTACGAGTGTGTGGCGACC  
AACTCGGCAGGCACAGTTACTCAGCCCCTGCGAACCTGTATGTGCGAGTGCGCCGCGTGGCTCCTCGTT  
TCTCCATCCCTCCCAGCAGCCAGGAGGTGATGCCAGGCGGAGCGTGAACCTGACATGCGTGGCAGTGGG  
TGCACCCATGCCCTACGTGAAGTGGATGATGGGGCCGAGGAGCTACCAAGGAGGATGAGATGCCAGTT  
GGCCGCAACGTCTGGAGCTCAGCAATGTCGTACGCTCTGCCAACTACACCTGTGTGGCCATCTCCCTCG  
TGGCATGATCGAGGCCACAGCCAGGTACAGTGAAAGCTCTTCAAAGCCTCCGATTGATCTTGTGGT  
GACAGAGACAACCTGCCACCAGTGTACCCTCACCTGGGACTCTGGGAACTCGGAGCCTGTAACCTACTAT  
GGCATCCAGTACCGCGCAGCGGGCACGGAGGGCCCTTTCAGGAGGTGGATGGTGTGGCCACCACCCGCT  
ACAGCATTGGCGGCTCAGCCCTTCTCGGAATATGCCTTCCGCGTGTGGCGGTGAACAGCATCGGGCG  
AGGGCCGCCAGCGAGGCAGTGCGGGCACGCAGGAGAAACAGGCGCCCTCCAGCCACCCGCGCGCTG  
CAGGCACGCATGCTGAGCGCCAGCACCATGCTGGTGCAGTGGGAGCCTCCGAGGAGCCCAACGGCCTGG  
TGGGGGATACCGCTCTACTATACTCCGACTCCGCGCCCCCGAACGCCTGGCACAAGCACAACAC  
CGACGCGGGCTCCTCAGACCCTGGGAGCCTGCTGCCTGGCATCACCTACAGCCTGCGGTGCTTGCC



TTCACCGCCGTGGGCGATGGCCCTCCCAGCCCCACCATCCAGGTCAAGACGCAGCAGGGAGTGCCTGCC  
 AGCCCCGGGACTTCCAGGCCGAGGTGGAGTCGGACACCAGGATCCAGCTCTCGTGCTGCTGCCCCCTCA  
 GGAGCGGATCATCATGTATGAACTGGTGTACTGGCGGCAGAGGACGAAGACCAACAGCACAAGGTGACC  
 TTCAGCCAACTCCTCTACACACTAGAGGACCTGAAGCCTGACACACTCTACCCTCCAGCTGGCTG  
 CACGCTCGGATATGGGGTGGGCGTCTTACCCCCACCATTGAGGCCGCACAGCCCAGTCCACCCCTC  
 CGCCCCCCCCAGAAGGTGATGTGTGTGAGCATGGGCTCCACCACGGTCCGGGTAAGTTGGTCCCGCC  
 CCTGCCGACAGCCGCAACGGCGTTATCACCCAGTACTCCGTGGCCTACGAGGCGGTGGACGGCGAGGACC  
 GCGGGCGGCATGTGGTGGATGGCATCAGCCGTGAGCACTCCAGCTGGGACCTGGTGGCCTGGAGAAGTG  
 GACGGAGTACCGGTGTGGTGGCGCACACAGACGTGGGCCCGGCCCGAGAGCAGCCGGTGTG  
 GTGCGCACCGATGAGGACGTGCCAGCGGGCTCCGCGGAAGGTGGAGGTGGAGCCACTGAACTCCACTG  
 CTGTGCATGTCTACTGGAAGCTGCCTGTCCCCAGCAAGCAGCATGGCCAGATCCGCGCTACCAGGTAC  
 CTACGTGCGGCTGGAGAATGGCGAGCCCGTGGACTCCCATCATCAAGACGTGATGCTAGCCGAGGCC  
 CAGGAAACCACTATCAGCGGCTGACCCCGAGACCACCTACTCCGTTACTGTTGCTGCCTATACCACCA  
 AGGGGGATGGTGCCCGCAGCAAGCCAAAATTGCTACTACAACAGGTGCAGTCCCAGGCCGGCCACCAT  
 GATGATCAGCACCGGCATGAACACTGCGCTGCTCCAGTGGCACCCACCAAGGAACTGCCTGGCGAG  
 CTGCTGGGCTACCGGCTGCACTACTGCCGGCCGACGAGGCGCGCCCAACACCATAGATTTCCGCAAGG  
 ATGACCAGCACTTACAGTCAACGGCCTGCACAAGGGGACCACCTACATCTTCCGGCTTGTGCCAAGAA  
 CCGGGCTGGCTTGGGTGAGGAGTTCGAGAAGGAGATCAGGACCCCGAGGACCTGCCAGCGGCTTCCCC  
 CAAAACCTGCATGTGACAGGACTGACCAGTCTACCACAGAACTGGCCTGGGACCCGCCAGTGTGGCGG  
 AGAGGAACGGGCGCATCATCAGTACACCGTGGTGTCCGAGACATCAACAGCCAACAGGAGCTGCAGAA  
 CATCAGCAGACACCCGCTTACCCTTACTGGCCTCAAGCCAGACACCATTACGACATCAAGTCCCG  
 GCATGGACCAGCAAAGGCTCTGGCCACTCAGCCCCAGCATCCAGTCCCGGACCATGCCGGTGGAGCAAG  
 GTTTTCCAAAGAACTCCGGGTGGCGGCTGCAATGAAGACGTCTGTGCTGCTCAGTGGGAGGTTCCCGA  
 CTCTATAAGTCACTGTGCCCTTAAAGATTCTGTACAATGGGCAGAGTGTGGAGTGGACGGGCACTCG  
 ATGCGGAAGTGTATCGCAGACCTGCAGCCCAACACAGAGTACTCGTTTGTGCTGATGAACCGTGGCAGCA  
 GCGCAGGGGGCTGCAGCACCTGGTGTCCATCCGACAGCCCGACCTCCTGCCTCACAAGCCGCTGCC  
 TGCCTCTGCCTACATAGAGGACGGCCGCTTCGATCTCTCCATGCCCATGTGCAAGACCCCTCGTTGTC  
 AGGTGGTCTACATTGTTGGTGGCCATTGACCGTGTGGGCGGGAGCATGCTGACGCCAAGGTGGAGCA  
 CACCCGAGGAACTGGAGCTGGACGAGTCTAGAAAGCCATCGAGCAAGGCGGAGAGGAGCAGCGGGCGG  
 GCGGGCGCAGGCAGAACGTCTGAAGCCATATGTGGCTGCTCAACTGGATGTCTCCCGGAGACCTTACC  
 TTGGGGACAAGAAGAACTACCGGGCTTCTACAACCGGCCCTGTCTCCGGACTTGAGCTACCAGTGTCT  
 TTGTGCTTGCCTCCTGAAGGAACCCATGGACCAGAAGCGCTATGCCTCCAGCCCTACTCGGATGAGAT  
 CGTGGTCCAGGTGACACCAGCCAGCAGAGGAGGAGCCGGAGATGCTGTGGGTGACGGTCCCCTGCTG  
 GCAGTCATCCTCATCATCCTCATTGTATCGCCATCCTCTTGTCAAAGGAAAAGGACCCACTCTCCGT  
 CCTTAAGGATGAGCAGTCGATCGGACTGAAGGACTCCTTGTGGCCACTCCTCTGACCCTGTGGAGAT  
 GCGGAGGCTCACTACCAGACCCAGGTATGCGAGACCACCCACCATCCCCATACCCGACTGGCGGAC  
 AACATCGAGCGCCTCAAAGCCAACGATGGCCTCAAGTTCTCCAGGAGTATGAGTCCATCGACCCCTGGAC  
 AGCAGTTCAGTGGGAGAATTCAAACCTGGAGGTGAACAAGCCCAAGAACCCTATGCGAATGTCATCGC  
 CTACGACCACTCTCGAGTACCTTACCCTATCGATGGCGTCCCGGGAGTGACTACATCAATGCCAAC  
 TACATCGATGGCTACCGCAAGCAGAATGCCTACCCGCCACGCAGGGCCCTGCCCGAGACCATGGGTG  
 ATTTCTGGAGGATGGTGTGGGAACAGCGCACGGCCACTGTGGTATGATGACACGGCTGGAGGAGAAGTC  
 CCGGGTAAAATGTGATCAGTACTGGCCAGCCGTGGCACCGAGACCTGTGGCCTTATTACGGTGACCCTG  
 TTGGACACAGTGGAGCTGGCCACATACACTGTGCGCACCTTCGCACTCCACAAGAGTGGCTCCAGTGA  
 AGCGCGAGCTGCGTCAGTTTCAAGTTCATGGCCTGGCCAGACCATGGAGTTCCTGAGTACCCAACCTCCAT  
 CCTGGCCTTCTACGACGGTCAAGGCTGCAACCCCTAGACGCAGGGCCCATGGTGGTGCCTGCAGC  
 GCGGGCGTGGCCGCACCGGCTGCTTATCGTATTGATGCCATGTTGGAGCGGATGAAGCACGAGAAGA  
 CGGTGGACATCTATGGCCAGTGCCTGCATGCGATCACAGGAACTACATGGTGCAGACGGAGGACCA  
 GTACGTGTTTCATCCATGAGGCGCTGCTGGAGGCTGCCACGTGCGGCCACACAGAGGTGCCTGCCCGAAC  
 CTGTATGCCACATCCAGAAGCTGGGCCAAGTGCCTCCAGGGGAGAGTGTGACCGCCATGGAGCTCGAGT  
 TCAAGTTGCTGGCCAGCTCCAAGGCCACACGTCCCGCTTATCAGCGCCAACCTGCCCTGCAACAAGTT  
 CAAGAACCAGGCTGGTGAACATCATGCCCTACGAATTGACCCGTGTGTGCTGCAGCCATCCGTGGTGTG  
 GAGGGCTGACTACATCAATGCCAGCTTCTGGATGGTTATAGACAGCAGAAGGCTACATAGTACAC

AGGGGCCTCTGGCAGAGAGCACCGAGGACTTCTGGCGCATGCTATGGGAGCACAATTCACCATCATCGT  
 CATGCTGACCAAGCTTCGGGAGATGGGCAGGGAGAAAATGCCACCAGTACTGGCCAGCAGAGCGCTCTGCT  
 CGCTACCAGTACTTTGTTGTTGACCCGATGGCTGAGTACAACATGCCCCAGTATATCCTGCGTGAGTTCA  
 AGGTACCGGATGCCCGGGATGGGCAGTCAAGGACAATCCGGCAGTTCCAGTTCACAGACTGGCCAGAGCA  
 GGGCGTGCCCAAGACAGGCGAGGGATTCATTGACTTTCATCGGGCAGGTGCATAAGACCAAGGAGCAGTTT  
 GGACAGGATGGGCCTATCAGGTGCACTGCAGTCTGGCGTGGGCCGACCGGGGTGTTCACTACTCTGA  
 GCATCGTCTGGAGCGCATGCGCTACGAGGGCGTGGTTCGACATGTTTCAGACCGTGAAGACCCTGCGTAC  
 ACAGCGTCTGCCATGGTGCAGACAGGACCAGTATCAGCTGTGCTACCGTGGCCCTGGAGTACCTC  
 GGCAGCTTTGACCACTATGCAACG

ACGCGTACGCGGCCGCTCGAG – GFP Tag – GTTTAA

**Protein Sequence:**

>RG207873 representing NM\_130440  
 Red=Cloning site Green=Tags(s)

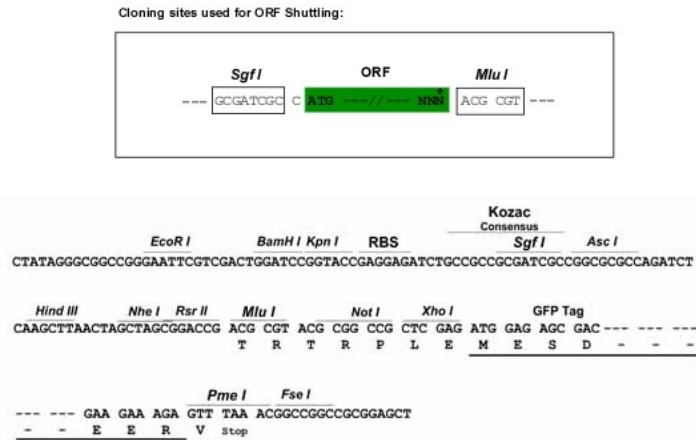
MAPEPAPGRMTMPLVPALVMLGLVAGAHGDSKPVFIKVPEDQTGLSGGVASFVCQATGEPKPRITWMKKG  
 KKVSSQRFEVIEFDDGAGSVLRIQPLRVQRDEAIYEECTATNSLGEINTSAKLSVLEEEQLPPGFPSIDMG  
 PQLKVVEKARTATMLCAAGGNPDPEISWFKDFLPVDPATSNRIKQLRSGALQIESSEESDQKGYECVAT  
 NSAGTRYSAPANLYVRVRRVAPRFSIPSSQEVMPGGSVNLTCVAVGAMPYVVKWMMGAELTKEDEMPV  
 GRNVLELSNVRSANYTCVAISSLGMIEATAQVTVKALPKPIDLVVTTETATSVTLTWDSGNSEPVTTY  
 GIQYRAAGTEGPFQEVGDVATTRYSIGGLSPFSEYAFRLAVNSIGRPPSEAVRARTGEQAPSSPPRRV  
 QARMLSASTMLVQWEPPEEPNGLVRGYRYYTPDSRRPPNAWHKHNTDAGLLTTVGSLLPGITYSLRVLA  
 FTAVGDGPPSPTIQVKTQQGVPAQPADFQAEVESDTRIQLSWLLPPQERIMYELVYWAAEDEDQQHKVT  
 FOPTSSYTLEDLKPDTLYRFLAARSDMGVGFPTPTIEARTAQSTPSAPPQKVMCVSMGSTTVRVSWVPP  
 PADSRNGVITQYSVAYEAVDGEDRGRHVVDGISREHSSWDLVGLEKWTEYRVVWRAHTDVGPESSPVL  
 VRTDEDVPSGPPRKEVEPELNSTAVHVYKLPVPSKQHGQIRGYQVTVYVRENGEPRGLPIIQDVMLAEA  
 QETTISGLTPETTYSVTVAAYTTKGDGARSKPKIVTTTGAVPGRPTMMISTTAMNTALLQWHPKELPGE  
 LLGYRLQYCRADARPNTIDFGKDDQHFVTGLHKGTTYIFRLAAKNRAGLGEEFEKEIRTPEDLPSGFP  
 QNLHVTGLTTSTTELAWDPPVLAERNRIISYTVVFRDINSQELQNITTDTRFTLTGLKPDTTYDIKVR  
 AWTSKGSGPLSPSIQSRTPVEQVFAKNFRVAAAMKTSVLLSWEVPDSYKSAVPFKILYNGQSVEVDGHS  
 MRKLIADLQPNTEYSFVLMNRGSSAGGLQHLVSIRTAPDLLPHKPLPASAYIEDGRFDLSMPHVQDPSLV  
 RWFYIVVVPIDRVGGSMLTPRWSTPEELEDLELLEAIEQGGEEQRRRRRQAERLKPVYAAQLDVLPETFT  
 LGDKKNYRGFYNRPLSPDLSYQCFVLAASLKEPMDQKRYASSPYSDEIVVQVTPAQQQEPEMLWVTGPVL  
 AVILIIILIVIAILLFKRKRTHSPSSKDEQSIGLKDSLLAHSSDPVEMRRLNYQTPGMRDHPPIPIDLAD  
 NIERLKANDGLKFSQEYESIDPGQQFTWENSNLEVNKPKNRYANVIAYDHSRVILTSIDGVPGSYINAN  
 YIDGYRKQAYATQGPLPETMGDFWRMVEQRTATVMMTRLEEKSRVKCDQYWPARGTETCGLIQVTL  
 LDTVELATYTVRFTALHKSSEKRELRFQFMWPDHGVPEYPTPILAFLLRRVKACNPLDAGPMVVHCS  
 AGVGRGTGCFIVIDAMLERMKHEKTVDIYGHVTCMRSQRNYMVQTEDQYVFIHEALLEAATCGHTEVPARN  
 LYAHIQKLGQVPPGESVTAMELEFKLLASSKAHTSRFISANLPCNKFKNRLVNIMPYELTRVCLQPIRGV  
 EGSYINASFLDGYRQQKAYIATQGPLAEATEDFWRMLWEHNSTIIVMLTKLREMGREKCHQYWPERSA  
 RYQYFVVDPMAYNMPQYILREFKVTDARDQSRIRQFQFTDWPEQGVPKTGEGFIDFQGVHKTKEQF  
 GQDGPITVHCSAGVGRGTGVFITLSIVLERMRYEGVDMFQTVKTLRTQRPAMVQTEDQYQLCYRAALEYL  
 GSFHDHYAT

TRTRPLE – GFP Tag – V

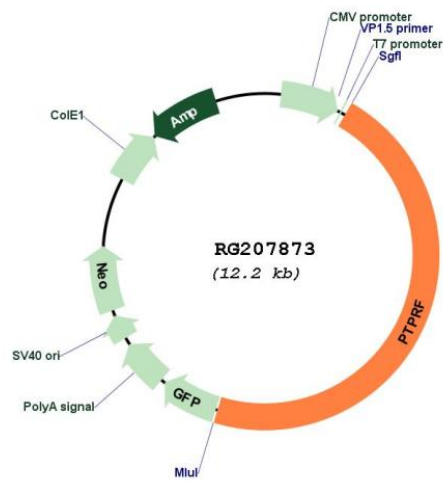
**Restriction Sites:**

SgfI-MluI

Cloning Scheme:



Plasmid Map:



ACCN: NM\_130440  
 ORF Size: 5694 bp

<b>OTI Disclaimer:</b>	The molecular sequence of this clone aligns with the gene accession number as a point of reference only. However, individual transcript sequences of the same gene can differ through naturally occurring variations (e.g. polymorphisms), each with its own valid existence. This clone is substantially in agreement with the reference, but a complete review of all prevailing variants is recommended prior to use. <a href="#">More info</a>
<b>OTI Annotation:</b>	This clone was engineered to express the complete ORF with an expression tag. Expression varies depending on the nature of the gene.
<b>Components:</b>	The ORF clone is ion-exchange column purified and shipped in a 2D barcoded Matrix tube containing 10ug of transfection-ready, dried plasmid DNA (reconstitute with 100 ul of water).
<b>Reconstitution Method:</b>	<ol style="list-style-type: none"><li>1. Centrifuge at 5,000xg for 5min.</li><li>2. Carefully open the tube and add 100ul of sterile water to dissolve the DNA.</li><li>3. Close the tube and incubate for 10 minutes at room temperature.</li><li>4. Briefly vortex the tube and then do a quick spin (less than 5000xg) to concentrate the liquid at the bottom.</li><li>5. Store the suspended plasmid at -20°C. The DNA is stable for at least one year from date of shipping when stored at -20°C.</li></ol>
<b>RefSeq:</b>	<a href="#">NM_130440.2</a> , <a href="#">NP_569707.2</a>
<b>RefSeq Size:</b>	7706 bp
<b>RefSeq ORF:</b>	5697 bp
<b>Locus ID:</b>	5792
<b>UniProt ID:</b>	<a href="#">P10586</a>
<b>Cytogenetics:</b>	1p34.2
<b>Domains:</b>	Y_phosphatase, ig, PTPc_motif, IGc2, IG, FN3
<b>Protein Families:</b>	Druggable Genome, Phosphatase, Transmembrane
<b>Protein Pathways:</b>	Adherens junction, Cell adhesion molecules (CAMs), Insulin signaling pathway
<b>Gene Summary:</b>	The protein encoded by this gene is a member of the protein tyrosine phosphatase (PTP) family. PTPs are known to be signaling molecules that regulate a variety of cellular processes including cell growth, differentiation, mitotic cycle, and oncogenic transformation. This PTP possesses an extracellular region, a single transmembrane region, and two tandem intracytoplasmic catalytic domains, and thus represents a receptor-type PTP. The extracellular region contains three Ig-like domains, and nine non-Ig like domains similar to that of neural-cell adhesion molecule. This PTP was shown to function in the regulation of epithelial cell-cell contacts at adherens junctions, as well as in the control of beta-catenin signaling. An increased expression level of this protein was found in the insulin-responsive tissue of obese, insulin-resistant individuals, and may contribute to the pathogenesis of insulin resistance. Two alternatively spliced transcript variants of this gene, which encode distinct proteins, have been reported. [provided by RefSeq, Jul 2008]