

## Product datasheet for **RG207846**

### SLC25A45 (NM\_001077241) Human Tagged ORF Clone

#### Product data:

**Product Type:** Expression Plasmids  
**Product Name:** SLC25A45 (NM\_001077241) Human Tagged ORF Clone  
**Tag:** TurboGFP  
**Symbol:** SLC25A45  
**Mammalian Cell Selection:** Neomycin  
**Vector:** pCMV6-AC-GFP (PS100010)  
**E. coli Selection:** Ampicillin (100 ug/mL)  
**ORF Nucleotide Sequence:** >RG207846 representing NM\_001077241  
 Red=Cloning site Blue=ORF Green=Tags(s)

TTTTGTAATACGACTCACTATAGGGCGGCCGGGAATTCGTCGACTGGATCCGGTACCGAGGAGATCTGCC  
 GCC**CGATCGCC**

ATGGTCAAGATTTACGCCATGAGTCCCTCCTGGGCTTCTTAAGGGAATGAGCTTCCCCATTGCCAGCA  
 TAGCTGTGGTCAACTCTGTCCTGTTGGGGTCTATAGCAACACCCCTGCTGGTGTCTACGGCCACCTCCCA  
 CCAGGAGCGGGCGGGCCAGCCGCCAGCTACATGCACATCTTCTAGCGGGTGCACCGGGGGTTCCTG  
 CAGGCCTACTGTCTGGCTCCTTTGACCTCATCAAAGTCCGGCTACAAAACCAGACAGCAAGGGCCC  
 AGCCAGGGAGCCCCACCCCGGTACCAGGGGCCGTGCACTGTGCAGCCTCCATCTTCCGGAGGAGGG  
 GCCCGGGGGCTGTTCCGAGGAGCCTGGGCCCTGACGCTGAGGGACACCCACCGGTGGGATCTACTTC  
 ATCACCTATGAAGGGCTCTGTCGCCAGTACACACCAGAAGGCCAGAATCCAGCTCAGCCACGGTCTGG  
 TGGCAGGGGGCTTTCAGGCATTGCTTCTGGGTGGCAGCCACGCCCTTAGACGTGATCAAGTCCCGGAT  
 GCAGATGGATGGACTGAGACGCAGAGTGTACCAGGGGATGCTGGACTGCATGGTGAGCAGCATCCGGCAG  
 GAAGGACTGGGAGTCTTCTCCGGGGGTACCATCAACAGTGCCCGGCCTTCCCGTCAATGCTGTCA  
 CCTTCTCAGCTACGAATATCTCTCCGCTGGTGGGA

**ACGCGTACGCGGCCGCTCGAG** - GFP Tag - GTTTAA

**Protein Sequence:** >RG207846 representing NM\_001077241  
 Red=Cloning site Green=Tags(s)

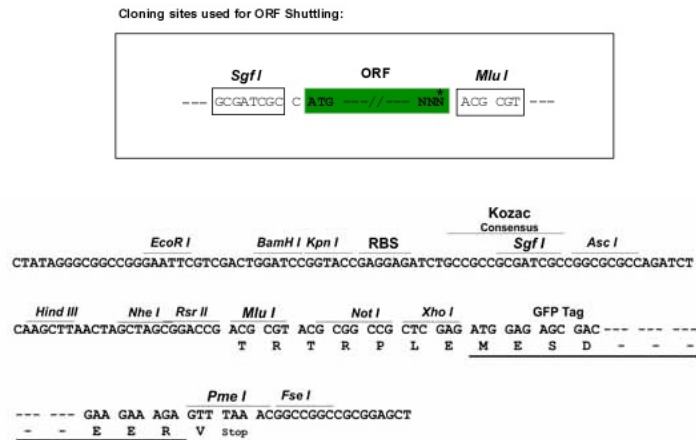
MVKIYRHESLLGFFKGMSFPIASIAVNSVLFVYSNTLLVLTATSHQERRAQPSPYMHIFLAGCTGGFL  
 QAYCLAPFDLIKVRLQNQTEPRAQPGSPPPRYQGPVHCAASIFREEGPRGLFRGAWALTLRDTPTVGIYF  
 ITYEGLCRQYTPGQNPSSATVLVAGGFAGIASWVAATPLDVIKSRMQMDGLRRRVYQGMDCMVSSIRQ  
 EGLGVFFRGTINSARAFPVNAVTFLSYEYLLRWVG

**TRTRPLE** - GFP Tag - V



**Restriction Sites:** SgfI-MluI

**Cloning Scheme:**



**ACCN:** NM\_001077241

**ORF Size:** 738 bp

**OTI Disclaimer:** The molecular sequence of this clone aligns with the gene accession number as a point of reference only. However, individual transcript sequences of the same gene can differ through naturally occurring variations (e.g. polymorphisms), each with its own valid existence. This clone is substantially in agreement with the reference, but a complete review of all prevailing variants is recommended prior to use. [More info](#)

**OTI Annotation:** This clone was engineered to express the complete ORF with an expression tag. Expression varies depending on the nature of the gene.

**Components:** The ORF clone is ion-exchange column purified and shipped in a 2D barcoded Matrix tube containing 10ug of transfection-ready, dried plasmid DNA (reconstitute with 100 ul of water).

**Reconstitution Method:**

1. Centrifuge at 5,000xg for 5min.
2. Carefully open the tube and add 100ul of sterile water to dissolve the DNA.
3. Close the tube and incubate for 10 minutes at room temperature.
4. Briefly vortex the tube and then do a quick spin (less than 5000xg) to concentrate the liquid at the bottom.
5. Store the suspended plasmid at -20°C. The DNA is stable for at least one year from date of shipping when stored at -20°C.

**Note:** Plasmids are not sterile. For experiments where strict sterility is required, filtration with 0.22um filter is required.

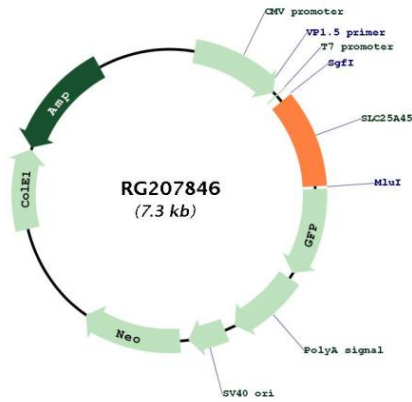
**RefSeq:** [NM\\_001077241.2](#), [NP\\_001070709.2](#)

**RefSeq Size:** 2231 bp

**RefSeq ORF:** 741 bp

Locus ID: 283130  
 UniProt ID: [Q8N413](#)  
 Cytogenetics: 11q13.1  
 Protein Families: Druggable Genome, Transmembrane  
 Gene Summary: SLC25A45 belongs to the SLC25 family of mitochondrial carrier proteins (Haitina et al., 2006 [PubMed 16949250]).[supplied by OMIM, Mar 2008]

**Product images:**



Circular map for RG207846