

Product datasheet for **RG207826**

SLC9A9 (NM_173653) Human Tagged ORF Clone

Product data:

Product Type:	Expression Plasmids
Product Name:	SLC9A9 (NM_173653) Human Tagged ORF Clone
Tag:	TurboGFP
Symbol:	SLC9A9
Synonyms:	AUTS16; NHE9
Mammalian Cell Selection:	Neomycin
Vector:	pCMV6-AC-GFP (PS100010)
E. coli Selection:	Ampicillin (100 ug/mL)



[View online »](#)

ORF Nucleotide Sequence:

>RG207826 representing NM_173653
 Red=Cloning site Blue=ORF Green=Tags(s)

GACGTTGTATACGACTCCTATAGGGCGGCCGGAATTCGTCGACTGGATCCGGTACCGAGGAGATCTGCC
 GCCGGCGCGCC

ATGGAGAGACAGTCAAGGTTATGTCAGAAAAGGATGAGTATCAGTTTCAACATCAGGGAGCGGTGGAGC
 TGCTTGTCTTCAATTTTTGCTCATCCTTACCATTTTGACAATCTGGTTATTTAAAAATCATCGATTCCG
 CTTCTTGCATGAAACTGGAGGAGCAATGGTGTATGGCCTTATAATGGGACTAATTTTACGATATGCTACA
 GCACCAACTGATATTGAAAGTGGAACTGTCTATGACTGTGTAATAACTAATTTTCACTCCATCAACTCTGC
 TGGTTAATATCACTGACCAAGTTTATGAATATAAATACAAAAGAGAAAATAAGTCAGCACAACATCAATCC
 TCATCAAGGAAATGCTATACTTGAAGAGATGACATTTGATCCAGAAATCTTCTCAATGTTTTACTGCCA
 CCAATTATATTTTATGCAGGATATAGTCTAAGAAGAGACACTTTTTTCAAACCTAGGATCTATTTTAA
 CGTATGCCTTCTGGGAACTGCCATCTCCTGCATCGTCATAGGGTAAATTATGTATGGTTTTGTGAAGGC
 TATGATACATGCTGGCCAGCTGAAAAATGGAGACTTTTCATTTCACTGACTGTTTTATTTTTGGTTCACTG
 ATGTCTGTACAGATCCAGTGACAGTGGCCATTTTCCATGAACTGCAGCTCGACCCTGACCTGTACA
 CACTCTTGTGGAGAGAGTGTGTTGAATGATGCAAGTGGCCATAGTCCTTACATATTCTATATCCATTTA
 CAGTCCCAAGGAGAATCCAAATGCATTTGATGCCGAGCATTCTCCAGTCTGTGGGGAATTTCTGGGA
 ATCTTCGCTGGCTCATTGCAATGGGGTCTGCGTATGCCATCATCACAGCACTGTTGACCAAATTTACCA
 AGCTGTGTGAGTCCCGATGCTGGAAACCGGCCTGTTTTCTGCTTCTTGGAGTGCCTTCTGCTGC
 CGAGGCTGCCGGCCTAACAGGGATAGTTGCTGTTCTTCTGTGGAGTACACAAGCACATTATACCTAC
 AACAACTGTCTCGGATCCAAAATAAGAACAACAGTTGTTGAATTTATGAACTTTTTGGCGGAGA
 ACGTCATCTTCTGTTACATGGCCTGGCACTGTTACGTTCCAGAATCATATCTTTAATGCTCTTTTTAT
 ACTTGGAGCCTTCTAGCAATTTTTGTTGCCAGAGCCTGCAACATATATCCCTCTCCTTCTCCTGAAT
 CTAGGCCGAAAACAGAAGATCCCTGGAACCTTTCAGCACATGATGATGTTTTCAGTTTTGCGAGGAGCGA
 TCGCATTGCTTAGCTATTCGGAACACAGAATCTCAGCCCAAACAAATGATGTTTACCCTACGCTGCT
 CCTCGTGTCTTCACTGTCTGGGATTTGGAGGAGGAACAACCCCATGTTGACTTGGCTTCCAGATCAGA
 GTTGGCGTGGACCTGGATGAAAATCTGAAGGAGGACCCCTCCTCACAAACACCAGGAAGCAAATAACTGG
 AAAAAACATGACGAAAGCAGAGAGTGTCTGGCTCTTCAAGATGGTATAGCTTTGACCACAAGTATCT
 GAAACCAATTTAACCCACTCTGGTCTCCGCTGACTACAACATTACCTGAATGGTGTGGTCCGATTTCC
 AGGCTGCTTACCAGTCTCAAGCCTATGGGGAACAGCTAAAAGAGGATGATGTGGATGCATTGTAACC
 AGGATGAACTAGCCATAAATTACCAGGAGCAAGCCTCCTACCCTGCAGTCTCCTGCAAGGCTAGGTCT
 GGACCAGAAAGCTTACCCAGACGCCAGGCAAGGAAAACATTTATGAGGGAGACCTCGGCTGGGAGGC
 TATGAACTCAAGCTTGAAGCAAACTTTGGGTCAATCCCAGTTGAAT

ACGCGTACGCGGCCGCTCGAG – GFP Tag – GTTTAA

Protein Sequence:

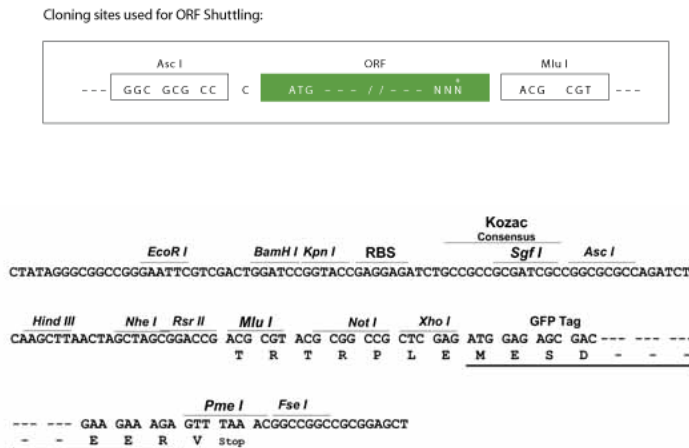
>RG207826 representing NM_173653
 Red=Cloning site Green=Tags(s)

MERQSRVMSKDEYQFQHQAPELLVFNFLILITLTIWLFKNHRFRFLHETGGAMVYGLIMGLILRYAT
 APTDIESGTVYDCVKLTFSPSTLLVNIIDQVVEYKYKREISQHNINPHQGNAILKMTFDPEIFFNVLLP
 PIIFHAGYSLKKRHFQNLGSILTYAFLGTAISCIVIGLIMYGFVKAMIHAGQLKNGDFHFDCLFFGSL
 MSATDPVTVLAIHFELHVPDLYLLFGESVLDVAIVLTYISISIYSPKENPNAFDAAFFQSVGNFLG
 IFAGSFAMGSAYAIITALLTKFTKLCEFPMLLETGLFLLSWSAFLSAEAAGLTGIVAVLFCGVTQAHYTY
 NNLSSSDKIRTKQLFEFMFLAENVIFCYMGLALFTFQNHIFNALFILGAFLAIFVARACNIYPLSFLLN
 LGRKQKIPWNFQHMMFSGLRGAIAFALAIRNTE SQPKQMMFTTLLLVFFTVVWVFGGGTTPMLTWLQIR
 VGVLDLNLKEDPSSQHQEANNLDKNMKAESARLFRMWSYFDHKYLKPIILTHSGPPLTTTLPEWCGPIS
 RLLTSPQAYGEQLKEDDVEIVNQDELAINYQEQAASSPCSPPARLGLDQKASPQTPGKENIYEGDLGLGG
 YELKLEQTLGQSQLN

TRTRPLE – GFP Tag – V

Restriction Sites: AscI-MluI

Cloning Scheme:



ACCN: NM_173653

ORF Size: 1935 bp

OTI Disclaimer: The molecular sequence of this clone aligns with the gene accession number as a point of reference only. However, individual transcript sequences of the same gene can differ through naturally occurring variations (e.g. polymorphisms), each with its own valid existence. This clone is substantially in agreement with the reference, but a complete review of all prevailing variants is recommended prior to use. [More info](#)

OTI Annotation: This clone was engineered to express the complete ORF with an expression tag. Expression varies depending on the nature of the gene.

Components: The ORF clone is ion-exchange column purified and shipped in a 2D barcoded Matrix tube containing 10ug of transfection-ready, dried plasmid DNA (reconstitute with 100 ul of water).

Reconstitution Method:

1. Centrifuge at 5,000xg for 5min.
2. Carefully open the tube and add 100ul of sterile water to dissolve the DNA.
3. Close the tube and incubate for 10 minutes at room temperature.
4. Briefly vortex the tube and then do a quick spin (less than 5000xg) to concentrate the liquid at the bottom.
5. Store the suspended plasmid at -20°C. The DNA is stable for at least one year from date of shipping when stored at -20°C.

RefSeq: [NM_173653.4](#)

RefSeq Size: 3647 bp

RefSeq ORF: 1938 bp

Locus ID: 285195

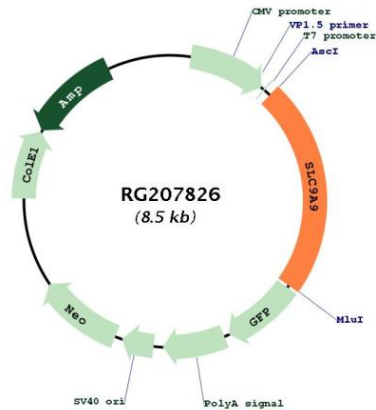
UniProt ID: [Q8IVB4](#)

Cytogenetics: 3q24

Protein Families: Druggable Genome, Transmembrane

Gene Summary: This gene encodes a sodium/proton exchanger that is a member of the solute carrier 9 protein family. The encoded protein localizes to the late recycling endosomes and may play an important role in maintaining cation homeostasis. Mutations in this gene are associated with autism susceptibility 16 and attention-deficit/hyperactivity disorder. [provided by RefSeq, Mar 2012]

Product images:



Circular map for RG207826