

Product datasheet for **RG207821**

TMEM86A (NM_153347) Human Tagged ORF Clone

Product data:

Product Type: Expression Plasmids
Product Name: TMEM86A (NM_153347) Human Tagged ORF Clone
Tag: TurboGFP
Symbol: TMEM86A
Mammalian Cell Selection: Neomycin
Vector: pCMV6-AC-GFP (PS100010)
E. coli Selection: Ampicillin (100 ug/mL)
ORF Nucleotide Sequence: >RG207821 representing NM_153347
Red=Cloning site Blue=ORF Green=Tags(s)

TTTTGTAATACGACTCACTATAGGGCGGCCGGAATTCGTCGACTGGATCCGGTACCGAGGAGATCTGCC
GCC**CGATCGCC**

ATGGTGTCCCGGTCCTACTGTGGTGAAGAGTGAAGGACCCAACTGGTGCCGTTCTCAAGGCCACCTGCG
TGATTTTTGTGCTCTGGCTGCCCTCATCTAGCCCATCGTGGGTGAGCACCTCATCAAGTGCCTGCCTAT
CTTCTGCCTCTGGCTCTTCTTCTGGCCATGGCCTGGGATTCCTGCTGGCCACCCAGCGCCACCCGC
ATCTTTGTGGGGCTTGTCTTCTGCTGTAGGTGACGCCTTCTCATCTGGCAGGACCAAGGATACTTCG
TGATGGTCTGCTGATGTTTGCTGTGACCCACATGTTCTACGCCTCGGCCTTGGCATGCAGCCACTGGC
TCTTCGGACAGGTCTGGTATGGCAGCGCTGTCGGCCTGTGCTATGCCCTCCTTACCCATGCCTCTCA
GGTGCCTTACCTACCTGGTGGGGTCTATGTGGCCCTATCGGCTTCATGGGCTGGCGAGCTATGGCAG
GGCTGCGGCTGGCCGGGCGAGACTGGCGCTGGACAGAGCTGGCAGCTGGCAGTGGTGCACCTTCTTTAT
CATCTCAGACCTGACCATCGCCCTCAACAAATTCTGTTTTCTGTGCCCTACTCTCGGGCGCTTATCATG
TCCACCTACTATGTGGCCAGATGCTCGCTCGCCTTGTGAGCTGTCGAAAGCCGGGAGCCTGTGGAACACT
ACAGACTGACCAAGGCCAAC

ACGCGTACGCGGCCGCTCGAG - GFP Tag - GTTTAA

Protein Sequence: >RG207821 representing NM_153347
Red=Cloning site Green=Tags(s)

MVSPVTVVKSEGPKLVPFFKATCVYFVLWLPSSSPSWVSTLIKCLPIFCLWLFLLAHGLGFLLAHPSATR
IFVGLVFSAVGDAFLIWQDQGYFVHGLLMFAVTHMFYASAFGMQPLALRTGLVMAALSGLCYALLYPCLS
GAFTYLGVVYVALIGFMGWRAMAGRLAGADWRWTELAAGSGALFFIISDLTIALNKFCFPVPYSRALIM
STYYVAQMLVALSAVESREPVEHYRLTKAN

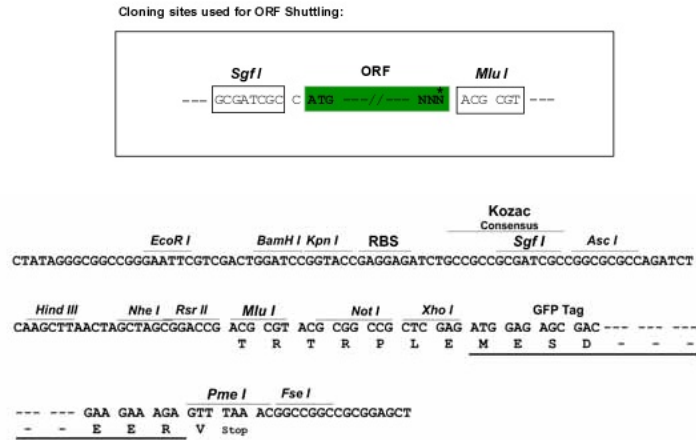
TRTRPLE - GFP Tag - V



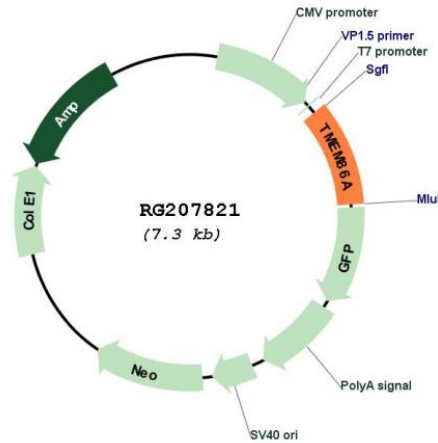
[View online »](#)

Restriction Sites: SgfI-MluI

Cloning Scheme:



Plasmid Map:



ACCN: NM_153347

ORF Size: 720 bp

OTI Disclaimer: The molecular sequence of this clone aligns with the gene accession number as a point of reference only. However, individual transcript sequences of the same gene can differ through naturally occurring variations (e.g. polymorphisms), each with its own valid existence. This clone is substantially in agreement with the reference, but a complete review of all prevailing variants is recommended prior to use. [More info](#)

OTI Annotation: This clone was engineered to express the complete ORF with an expression tag. Expression varies depending on the nature of the gene.

Components:	The ORF clone is ion-exchange column purified and shipped in a 2D barcoded Matrix tube containing 10ug of transfection-ready, dried plasmid DNA (reconstitute with 100 ul of water).
Reconstitution Method:	<ol style="list-style-type: none">1. Centrifuge at 5,000xg for 5min.2. Carefully open the tube and add 100ul of sterile water to dissolve the DNA.3. Close the tube and incubate for 10 minutes at room temperature.4. Briefly vortex the tube and then do a quick spin (less than 5000xg) to concentrate the liquid at the bottom.5. Store the suspended plasmid at -20°C. The DNA is stable for at least one year from date of shipping when stored at -20°C.
RefSeq:	<u>NM_153347.3</u>
RefSeq Size:	3607 bp
RefSeq ORF:	723 bp
Locus ID:	144110
UniProt ID:	<u>Q8N2M4</u>
Cytogenetics:	11p15.1
Protein Families:	Transmembrane