

Product datasheet for **RG207806**

REM2 (NM_173527) Human Tagged ORF Clone

Product data:

Product Type: Expression Plasmids
 Product Name: REM2 (NM_173527) Human Tagged ORF Clone
 Tag: TurboGFP
 Symbol: REM2
 Mammalian Cell Selection: Neomycin
 Vector: pCMV6-AC-GFP (PS100010)
 E. coli Selection: Ampicillin (100 ug/mL)
 ORF Nucleotide Sequence: >RG207806 representing NM_173527
 Red=Cloning site Blue=ORF Green=Tags(s)

TTTTGTAATACGACTCACTATAGGGCGGCCGGAATTCGTCGACTGGATCCGGTACCGAGGAGATCTGCC
 GCC**CGATCGCC**

ATGGACACAGAAACCACAGCACTCTGCCCTCTGGCAGCCGCGGGCCTCCCCTCCAGGGACGCCACAC
 CAGAAGCAGATGCCACGCTACTAAAGAAGTCAGAGAACTGTTGGCAGAGTTGGACCGGAGCGGTTACC
 CTCTGCCCTGGGGCCCCAGACGAAGAGGCAGTATGCCTGTCCCCTACAAGCACCAGCTCCGGCGGGCC
 CAGGCTGATAGTGAAGTGAAGTGGCCACCTCAGGCCTCATCCTCTGGCTCGTCTGACTCCTTGGGCTCAG
 GGGAGGCAGCCCCTGCTCAAAGGATGGCATCTTCAAGTCACTAGTGGGGGAGAGCGGCGTGGGCAA
 GAGCACCTTAGCAGGCACCTTTTGGTGGTCTCCAGGGAGACAGTGTCTACGAACCGGAGAACCAGAGGAT
 ACCTATGAGAGACGCATCATGGTGGATAAGGAGGAAGTACTCTAGTCGTTTATGACATCTGGAAACAGG
 GGGATGCAGGAGGGTGGCTGCGGGACCACTGCCTTCCAGACCGGGGACGCCTTTCTCATCGTCTTCTCAGT
 CACCGACCGAGGAGTTTCTCAAAGTTCCAGAGACCCTACTTCGGCTCCGGGCTGGGAGGCCGACCCAC
 GACCTACCGTTATCCTCGTTGGAACAAGAGCGACTTGGCCCGCTCCCGGAGGTATCACTGGAGGAGG
 GCCCCACCTGGCCGGGACGCTGAGCTGCAAGCACATCGAGACGTCGGCCGCACTGCACCACAACACGAG
 GGAGCTCTTCAGGGCGCGGTGCGCCAGATCCGGCTGCGGCGGGGCCGAAACCACGCCGAGGCCAGAGG
 CCCGATCCGGGACGCCCCGAGGGCCCTGCGCCACCTGCACGCCGAGAGCCTCACCAAGAAAGCCAAGA
 GGTTCCTCGCAACCTGGTGCCGCGCAACGCCAAGTTCTCAAGCAGCGCTCCAGGTCGTGTACGACCT
 CTCGGTGTCT

ACGCGTACGCGGCCGCTCGAG - GFP Tag - GTTTAA



[View online »](#)

Protein Sequence: >RG207806 representing NM_173527
Red=Cloning site Green=Tags(s)

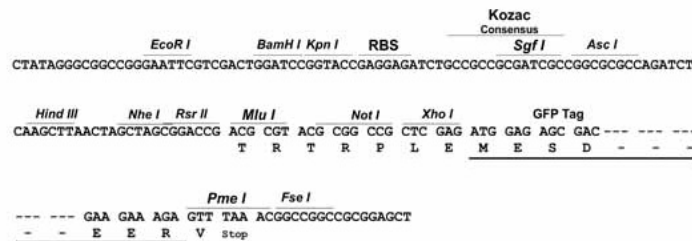
MDTETTALCPGSRRASPPGTPTEADATLLKSEKLLAELDRSGLPSAPGAPRRRGSMPPYKHLRRA
 QAVDELWPPQASSGSSDSLGSGEAAPAQKDGIFKVMLVGESGVGKSTLAGTFGGLQGDSAHEPENPED
 TYERRIMVDKEEVTLVVYDIWEQDAGGWL RDHCLQTGDAFLIVFSVTDRRSF SKVPETLLRLRAGRPHH
 DLPVILVGNKSDLARSREVSLEEGRHLAGTLSCKHIETS AALHHTREL FEGAVRQIRLRRGRNHAGGQR
 PDPGSPGEPAPPARRESLTKKAKRFLANLVPRNAKFFKQSRRSCHDL SVL

TRTRPLE - GFP Tag - V

Restriction Sites: SgfI-MluI

Cloning Scheme:

Cloning sites used for ORF Shutting:



ACCN: NM_173527

ORF Size: 990 bp

OTI Disclaimer: The molecular sequence of this clone aligns with the gene accession number as a point of reference only. However, individual transcript sequences of the same gene can differ through naturally occurring variations (e.g. polymorphisms), each with its own valid existence. This clone is substantially in agreement with the reference, but a complete review of all prevailing variants is recommended prior to use. [More info](#)

OTI Annotation: This clone was engineered to express the complete ORF with an expression tag. Expression varies depending on the nature of the gene.

Components: The ORF clone is ion-exchange column purified and shipped in a 2D barcoded Matrix tube containing 10ug of transfection-ready, dried plasmid DNA (reconstitute with 100 ul of water).

Reconstitution Method:

1. Centrifuge at 5,000xg for 5min.
2. Carefully open the tube and add 100ul of sterile water to dissolve the DNA.
3. Close the tube and incubate for 10 minutes at room temperature.
4. Briefly vortex the tube and then do a quick spin (less than 5000xg) to concentrate the liquid at the bottom.
5. Store the suspended plasmid at -20°C. The DNA is stable for at least one year from date of shipping when stored at -20°C.

Note: Plasmids are not sterile. For experiments where strict sterility is required, filtration with 0.22um filter is required.

RefSeq: [NM_173527.1](#), [NP_775798.1](#)

RefSeq Size: 1885 bp

RefSeq ORF: 1023 bp

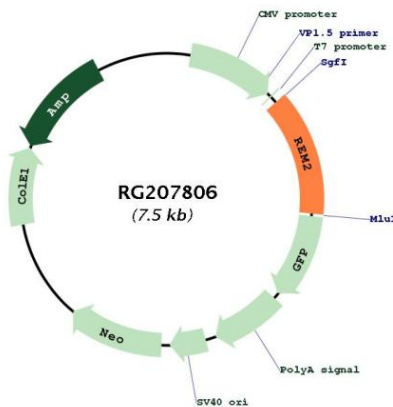
Locus ID: 161253

UniProt ID: [Q8IYK8](#)

Cytogenetics: 14q11.2

Gene Summary: Binds GTP saturably and exhibits a low intrinsic rate of GTP hydrolysis.[UniProtKB/Swiss-Prot Function]

Product images:



Circular map for RG207806