

Product datasheet for **RG207790**

PI 3 Kinase catalytic subunit gamma (PIK3CG) (NM_002649) Human Tagged ORF Clone

Product data:

Product Type:	Expression Plasmids
Product Name:	PI 3 Kinase catalytic subunit gamma (PIK3CG) (NM_002649) Human Tagged ORF Clone
Tag:	TurboGFP
Symbol:	PI 3 Kinase catalytic subunit gamma
Synonyms:	p110gamma; p120-PI3K; PI3CG; PI3K; PI3Kgamma; PIK3
Mammalian Cell Selection:	Neomycin
Vector:	pCMV6-AC-GFP (PS100010)
E. coli Selection:	Ampicillin (100 ug/mL)
ORF Nucleotide Sequence:	>RG207790 representing NM_002649 Red=Cloning site Blue=ORF Green=Tags(s)

TTTTGTAATACGACTCACTATAGGGCGCCGGGAATTCGTCGACTGGATCCGGTACCGAGGAGATCTGCC
GCC**CGATCGCC**

ATGGAGCTGGAGAACTATAAACAGCCCGTGGTCTGAGAGAGGACAACCTGCCGAAGGCGCCGGAGGATGA
AGCCGCGCAGTGTGCGGCCAGCCTGTCTCCATGGAGCTCATCCCCATCGAGTTCGTCTGCCACCAG
CCAGCGCAAATGCAAGAGCCCCGAAACGGCGTGTGCACGTGGCCGGCCACGGCAACGTGGAGCAGATG
AAGGCCAGGTGTGGCTGCGAGCGCTGGAGACCAGCGTGGCGGGGACTTCTACCACCGCTGGGACCGC
ATCACTTCTCTGCTCTATCAGAAGAAGGGCAGTGGTACGAGATCTACGACAAGTACCAGGTGGTGCA
GACTCTGGACTGCCTGCGCTACTGGAAGGCCACGCACCGAGCCCGGGCCAGATCCACCTGGTGCAGCGG
CACCCGCCCTCCGAGGAGTCCCAAGCCTTCCAGCGGCAGCTCACGGCGCTGATTGGCTATGACGTCAGT
ACGTGACGCAACGTGCACGACGATGAGCTGGAGTTCACGCGCCGTGGCTTGGTGACCCCGCATGGCGGA
GGTGGCCAGCCGACCCCAAGCTTACGCCATGCACCCGTGGGTGACGTCCAAGCCCCTCCCGGAGTAC
CTGTGGAAGAAGATTGCCAACAACCTGCATCTTCATCGTCATTACCGCAGCACCACCAGCCAGACCATTA
AGGTCTCACCCGACGACACCCCGGCCATCCTGCAGAGCTTCTCACCAAGATGGCCAAGAAGAAATC
TCTGATGGATATCCCGAAAGCCAAAGCGAACAGGATTTGTGCTGCGCGTCTGTGGCCGGATGAGTAC
CTGGTGGCGAAACGCCCATCAAAAACCTCCAGTGGGTGAGGCACTGCCCAAGAACGGAGAGGATTC
ACGTGGTACTGGACACGCCCTCCAGACCCGGCCCTAGACGAGGTGAGGAAGGAAGAGTGGCCGCTGGTGG
CGACTGCACGGGAGTACCCGGCTACCATGAGCAGCTTACCATCCACGGCAAGGACCACGAGAGTGTGTT
ACCGTGTCCCTGTGGACTGCGACCGCAAGTTCAGGGTCAAGATCAGAGGCATTGATATCCCCGCTCTGC
CTCGGAACACCGACCTCACAGTTTTGTAGAGGCAAAACATCCAGCATGGGCAACAAGTCTTTGCCAAAG
GAGAACCAGCCCCAAACCCTTACAGAGGAGGTGCTGTGGAATGTGTGGCTTGGTTTCAATCAAAATC
AAAGACTGCCAAAGGGGCTCTACTGAACCTCCAGATCTACTGCGGTAAGCTCCAGCACTGTCCAGCA
AGGCCTCTGCAGAGTCCCCAGTCTGAGTCCAAGGGCAAAGTTCAGCTTCTCTATTATGTGAACCTGCT
GCTGATAGACCACCGTTTCTCTGCGCGTGGAGAATACGTCCTCCACATGTGGCAGATATCTGGGAAG



[View online »](#)

GGAGAAGACCAAGGAAGCTTCAATGCTGACAACTCACGTCTGCAACTAACCCAGACAAGGAGAAGCTCAA
 TGTCCATCTCCATTCTTCTGGACAATTACTGCCACCCGATAGCCCTGCCTAAGCATCAGCCCACCCCTGA
 CCCGGAAGGGGACCGGGTTCGAGCAGAAATGCCCAACCAGCTTCGCAAGCAATTGGAGGCGATCATAGCC
 ACTGATCCACTTAACCCCTCTCACAGCAGAGGACAAAGAATTGCTCTGGCATTGATAGACGAAAGCCTTA
 AGCACCACAAAAGCATATCCTAAGCTATTTAGTTTCAGTGAATGGGACAGCAAGAAATTTGGCCAAAAC
 ATACCAATTGTTGGCCAGAAGGGAAGTCTGGGATCAAAGTCTTTGGATGTTGGGTTAACAACTGCAGCTC
 CTGGACTGCAACTTCTCAGATGAAAATGTAAGAGCCATTGCAGTTCAGAAACTGGAGACTGGAGGACG
 ATGATGTTCTGCATTACCTTCTACAATTGGTCCAGGCTGTGAAATTTGAACCATACCATGATAGTGCCTT
 TGCCAGATTTCTGCTGAAGCGTGGTTAAGAAAACAAAAGAATTGGTCACTTTTTGTTTTGTTTCTTGAGA
 AGTGAGATAGCCAGTCCAGACACTATCAGCAGAGGTTGCTGTGATTCTGGAAGCCTATCTGAGGGCT
 GTGGCAGACCCATGCTGCACGACTTTACCAACAAGTCCAAGTAATCGAGATGTTACAAAAAGTCAACCT
 TGATATTAATCGCTCTCTGCTGAAAAGTATGACGTGAGTCCCAAGTTATTTACAACCTAAACAAAAG
 CTTGAAAACCTGCAGAATTCTCAACTCCCCGAAAGCTTTAGAGTCCATATGATCCTGGACTGAAAGCAG
 GAGCGCTGGCAATTGAAAAATGTAAGTAAATGGCCTCCAAGAAAAACCCTATGGCTTGAGTTAATG
 TGCCGATCCTACAGCCCTATCAATGAAACAATTGGAATTATCTTTAAACATGGTATGATCTGCGCCAA
 GACATGCTATTTTACAGATTCTACGAATCATGGAGTCTATTTGGGAGACTGAATCTTTGGATCTATGCC
 TCCTGCCATATGGTTGCATTTCAACTGGTGACAAAATAGGAATGATCGAGATTGTGAAAGACGCCACGAC
 AATTGCCAAAATTCAGCAAAGCACAGTGGGCAACACGGGAGCATTTAAAGATGAAGTCTGAATCACTGG
 CTCAAAGAAAAATCCCCTACTGAAGAAAAGTTTCAGGCAGCAGTGGAGAGATTTGTTTATTCCTGTGCG
 GCTACTGTGTGGCAACCTTTGTTCTTGGAAATAGGCGACAGACACAATGACAATATATGATCACCAGAC
 AGGAAACCTATTTCAATGACTTCGGGCACATCTTGGGAATTACAAAAGTTTCTGGGCATTAATAAA
 GAGAGAGTGCCATTTGTGCTAACCCCTGACTTCTCTTTGTGATGGGAACCTCTGGAAAGAAAGCAAGCC
 CACACTCCAGAAAATTCAGGACATCTGTGTTAAGGCTTATCTAGCCCTTCGTCATCACACAAACCTACT
 GATCATCTGTTCTCCATGATGCTGATGACAGGAATGCCCGAGTTAAACAAGCAAAGAAGCATTGAATAT
 ATCCGGGATGCCCTCACAGTGGGAAAAATGAGGAGGATGCTAAAAAGTATTTTCTTGATCAGATCGAAG
 TTTGCAGAGACAAAGGATGGACTGTGCAGTTAATTGGTTTCTACATCTTGTCTTGGCATCAAACAAGG
 AGAGAAACATTCAGCC

ACGCGTACGCGGCCGCTCGAG - GFP Tag - GTTTAA

Protein Sequence:

>RG207790 representing NM_002649
 Red=Cloning site Green=Tags(s)

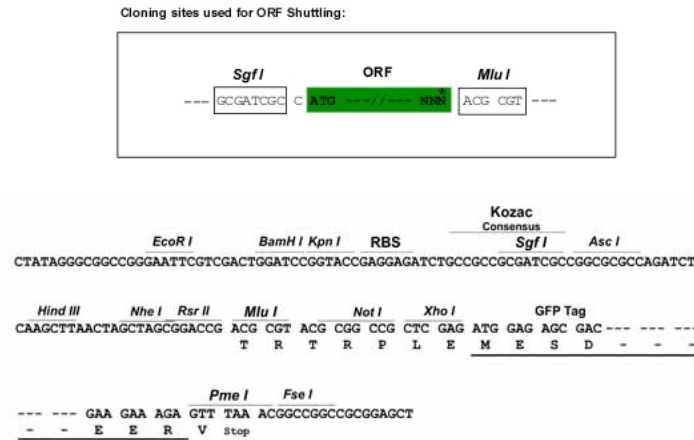
MELNYKQPVVLRDNCRRRRRMRKPRSAASLSSMELIPIEFVLPSTQRKCKSPETALLHVAGHGNVEQM
 KAQVWLRALETSVAADFVHRLGPHHFLLYQKKGQWYEIYDKYQVVQTLDCRLRYWKATHRSPGQIHLVQR
 HPPSEESQAFQRQLTALIGYDVTVDVSNVHDELEFTRRGLVTPRMAEVASRDPKLAMHPVWTSKPLPEY
 LWKKIANNCFIVIHRSSTTSQTIKVPDDTPGAILQSFFTKMAKKKSLMDIPESQSEQDFVLRVCGRDEY
 LVGETPIKNFQVVRHCLKNGEEIHVVLDTPPPALDEVRKEEWPLVDDCTGVTGYHEQLTIHGKDHEVSVF
 TVSLWDCDRKFRVKIRGIDIPVLPNTDLTVFVEANIQHQQVLCQRRTPSPKPFTEEVLWNVWLEFSIKI
 KDLPKGALLNLQIYCGKAPALSSKASAESPSSESKGKVQLLYVNNLLIDHRFLLRRGEYVLLHMWQISGK
 GEDQGSFNADKLTSAATNPKENSMSISILLDNYCHPIALPKHQPTDPEGDRVRAEMPNLQRKQLEAIIA
 TDPLNPLTAEDKELLWHFRYESLKHPKAYPKLFSSVKWQQEIVAKTYQLLARREVVDQSALDVGLTMQL
 LDCNFSDENVRVIAVQKLESLEDDDLHYLLQLVQAVKFEPYHDSALARFLLKRGLRNKRIGHFLFWFLR
 SEIAQSRHYQRFVAVILEAYLRGCGTAMLHDFDQVQVIEMLQKVTLDIKSLSAEKYDVSSQVISQLKQK
 LENLQNSQLPESFRVPYDPGLKAGALAEKCKVMASKKKPLWLEFKCADPTALSNETIGIIFKHGDDLRLQ
 DMLILQILRIMESIWETESLDLCLLPYGCISTGDKIGMIEIVKDATTIAKIQQSTVGTGAFKDEVLNHW
 LKEKSPTEEFQAAVERFVYSCAGYCVATFVLGIGDRHNDNIMITETGNLFHIDFGHILGNYKSFGLGINK
 ERVPFVLPDFLVMGTSGKKTSPHFQKFQDQICVKAYLALRHHTNLLIILFSMMLMTGMPQLTSKEDIEY
 IRDALTVGKNEEDAKKYFLDQIEVCRDKGWTQVFNWFLHLVGLIKQGEKHS

TRTRPLE - GFP Tag - V

Restriction Sites:

Sgfl-MluI

Cloning Scheme:



ACCN: NM_002649

ORF Size: 3306 bp

OTI Disclaimer: The molecular sequence of this clone aligns with the gene accession number as a point of reference only. However, individual transcript sequences of the same gene can differ through naturally occurring variations (e.g. polymorphisms), each with its own valid existence. This clone is substantially in agreement with the reference, but a complete review of all prevailing variants is recommended prior to use. [More info](#)

OTI Annotation: This clone was engineered to express the complete ORF with an expression tag. Expression varies depending on the nature of the gene.

Components: The ORF clone is ion-exchange column purified and shipped in a 2D barcoded Matrix tube containing 10ug of transfection-ready, dried plasmid DNA (reconstitute with 100 ul of water).

- Reconstitution Method:**
1. Centrifuge at 5,000xg for 5min.
 2. Carefully open the tube and add 100ul of sterile water to dissolve the DNA.
 3. Close the tube and incubate for 10 minutes at room temperature.
 4. Briefly vortex the tube and then do a quick spin (less than 5000xg) to concentrate the liquid at the bottom.
 5. Store the suspended plasmid at -20°C. The DNA is stable for at least one year from date of shipping when stored at -20°C.

RefSeq: [NM_002649.2](#), [NP_002640.2](#)

RefSeq Size: 5379 bp

RefSeq ORF: 3309 bp

Locus ID: 5294

UniProt ID: [P48736](#)

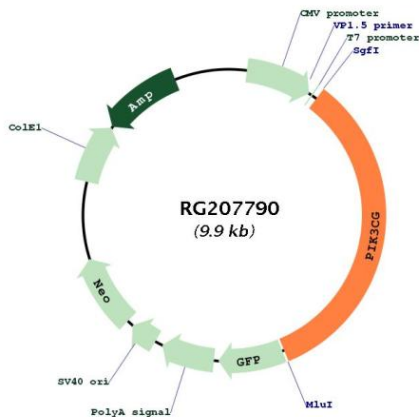
Cytogenetics: 7q22.3

Protein Families: Druggable Genome, ES Cell Differentiation/IPS

Protein Pathways: Acute myeloid leukemia, Apoptosis, B cell receptor signaling pathway, Chemokine signaling pathway, Chronic myeloid leukemia, Colorectal cancer, Endometrial cancer, ErbB signaling pathway, Fc epsilon RI signaling pathway, Fc gamma R-mediated phagocytosis, Focal adhesion, Glioma, Inositol phosphate metabolism, Insulin signaling pathway, Jak-STAT signaling pathway, Leukocyte transendothelial migration, Melanoma, mTOR signaling pathway, Natural killer cell mediated cytotoxicity, Neurotrophin signaling pathway, Non-small cell lung cancer, Pancreatic cancer, Pathways in cancer, Phosphatidylinositol signaling system, Progesterone-mediated oocyte maturation, Prostate cancer, Regulation of actin cytoskeleton, Renal cell carcinoma, Small cell lung cancer, T cell receptor signaling pathway, Toll-like receptor signaling pathway, Type II diabetes mellitus, VEGF signaling pathway

Gene Summary: Phosphoinositide 3-kinases (PI3Ks) phosphorylate inositol lipids and are involved in the immune response. The protein encoded by this gene is a class I catalytic subunit of PI3K. Like other class I catalytic subunits (p110-alpha p110-beta, and p110-delta), the encoded protein binds a p85 regulatory subunit to form PI3K. This gene is located in a commonly deleted segment of chromosome 7 previously identified in myeloid leukemias. Several transcript variants encoding the same protein have been found for this gene. [provided by RefSeq, Jun 2015]

Product images:



Circular map for RG207790